

370 S WESTERN AVENUE #505
DES PLAINES





ROOM DIMENSIONS

FOYER/UNIT ENTRY : 10' × 4'

LIVING ROOM : 14' × 14'

DINING AREA : 16' × 7'

KITCHEN W/EATING AREA : 13' × 11'

PRIMARY BEDROOM : 16' × 13'

BEDROOM 2 : 12' × 10'

PRIMARY WALK-IN CLOSET : 6' × 5'

BEDROOM 2 WALK-IN : 6' × 4'

LAUNDRY CLOSET : 6' × 3'

BALCONY : 14' × 7'

2 BEDROOM

1.1 BATH

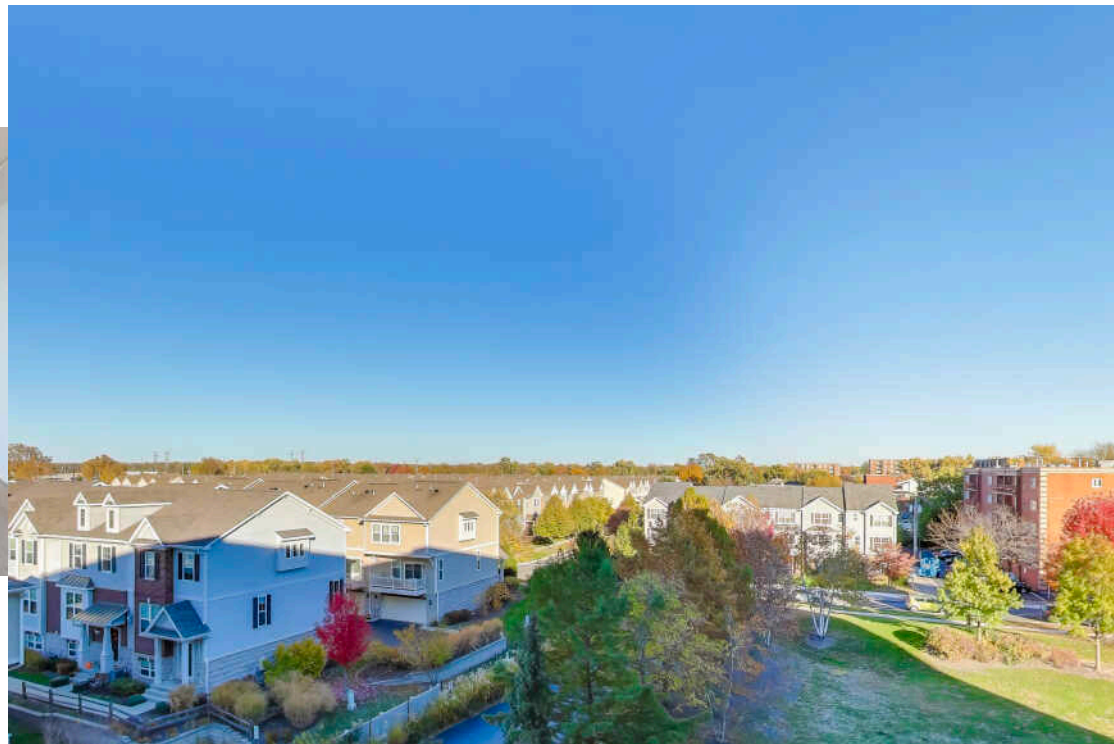
TAXES: \$4,777

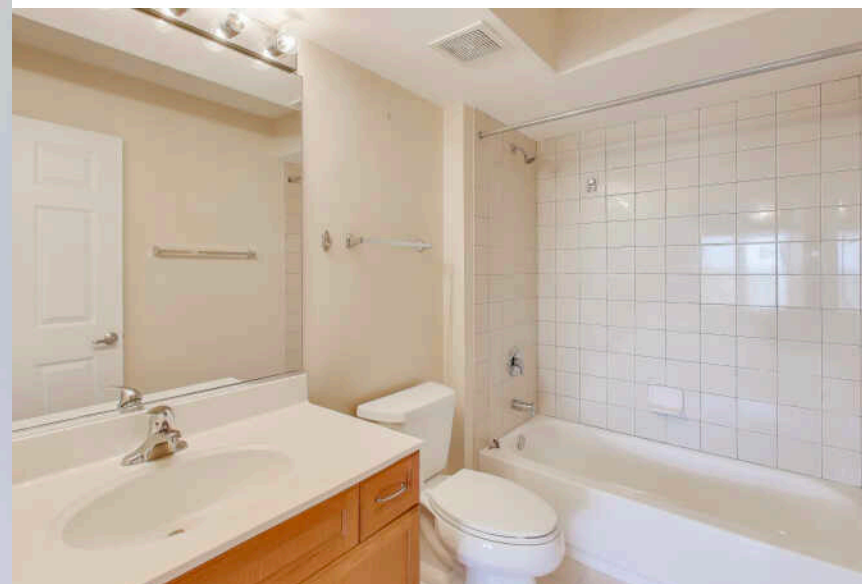
ASSESSMENTS: \$399

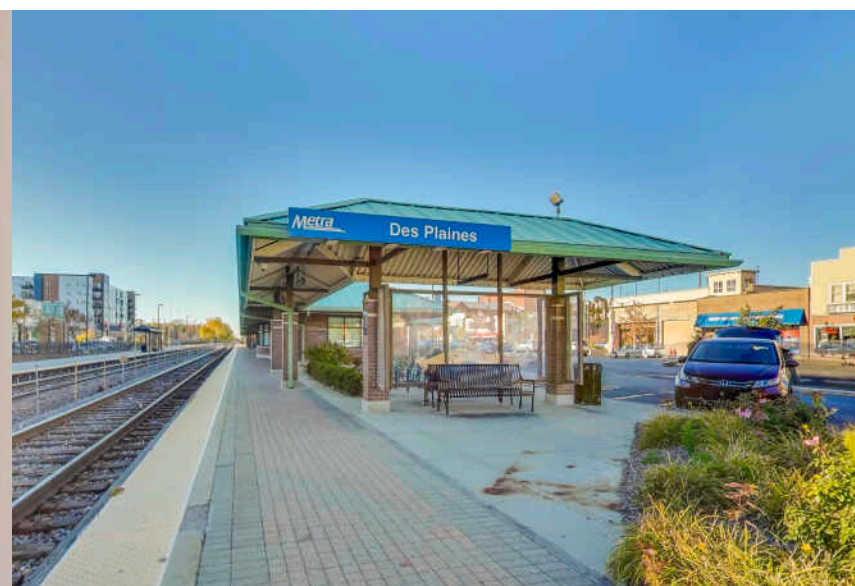
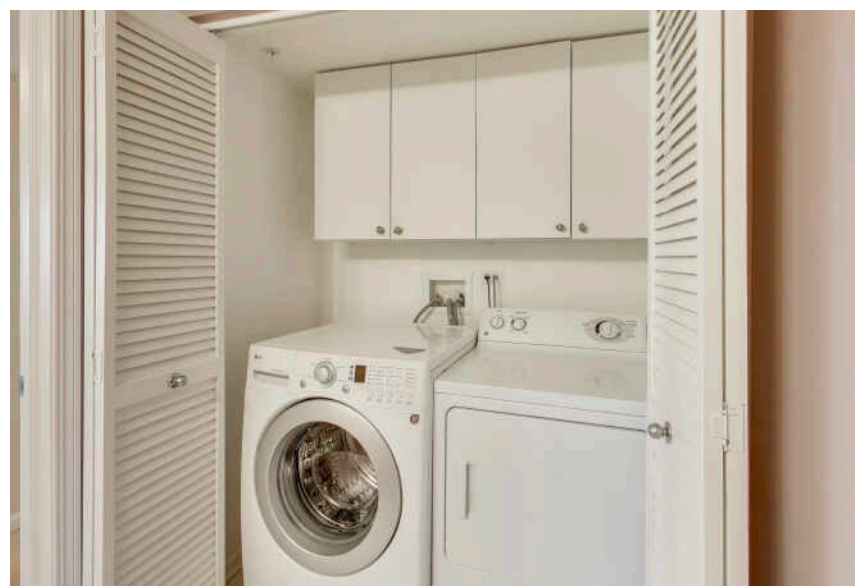
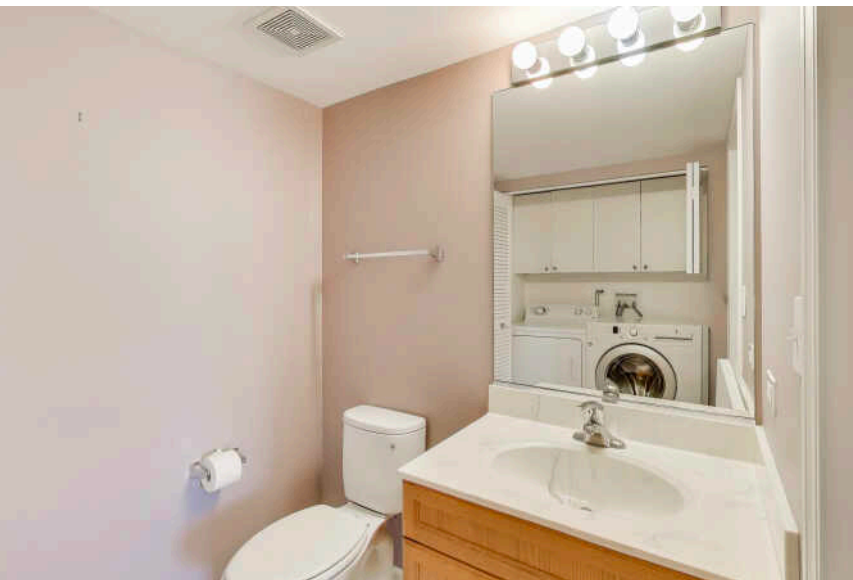
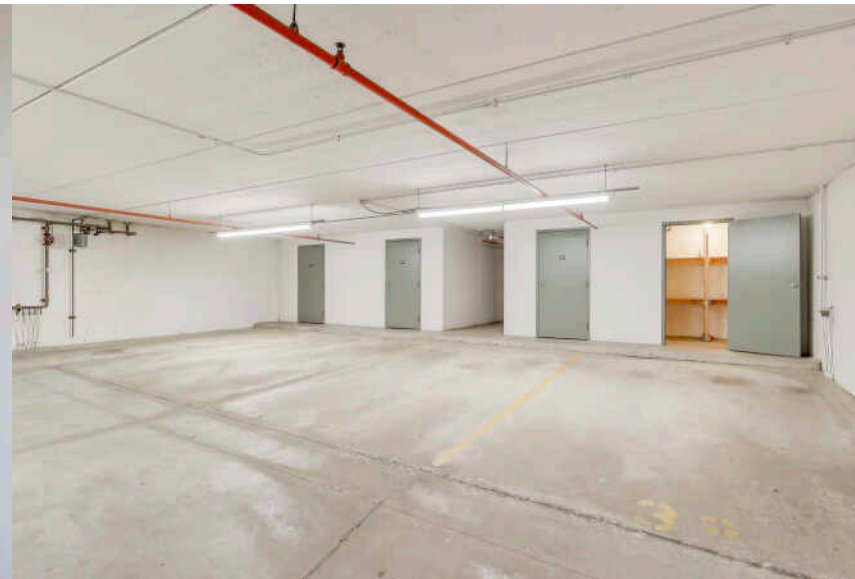
STONE GATE DIAMOND MODEL FLOORPLAN - PANORAMIC VIEWS!

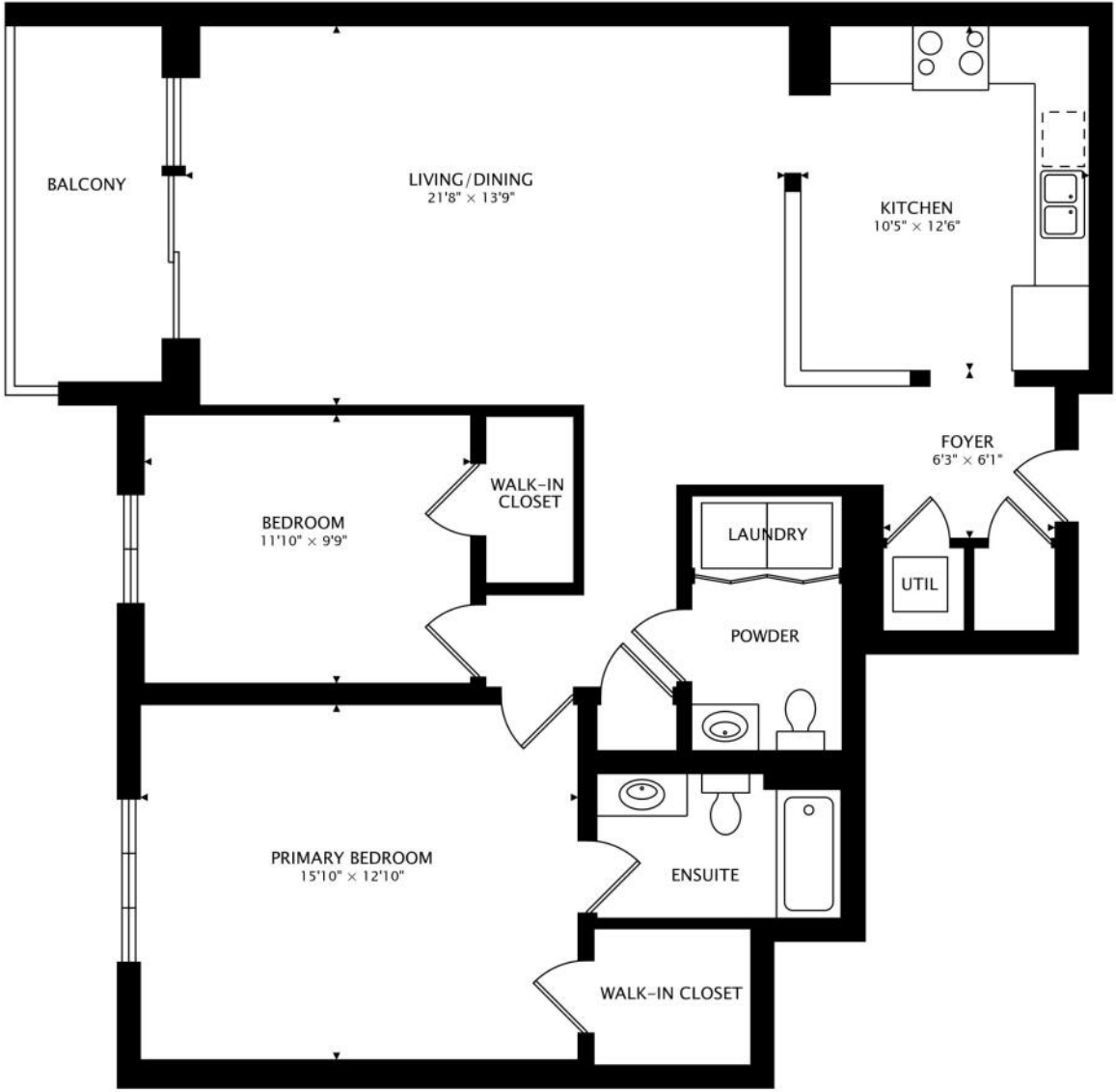
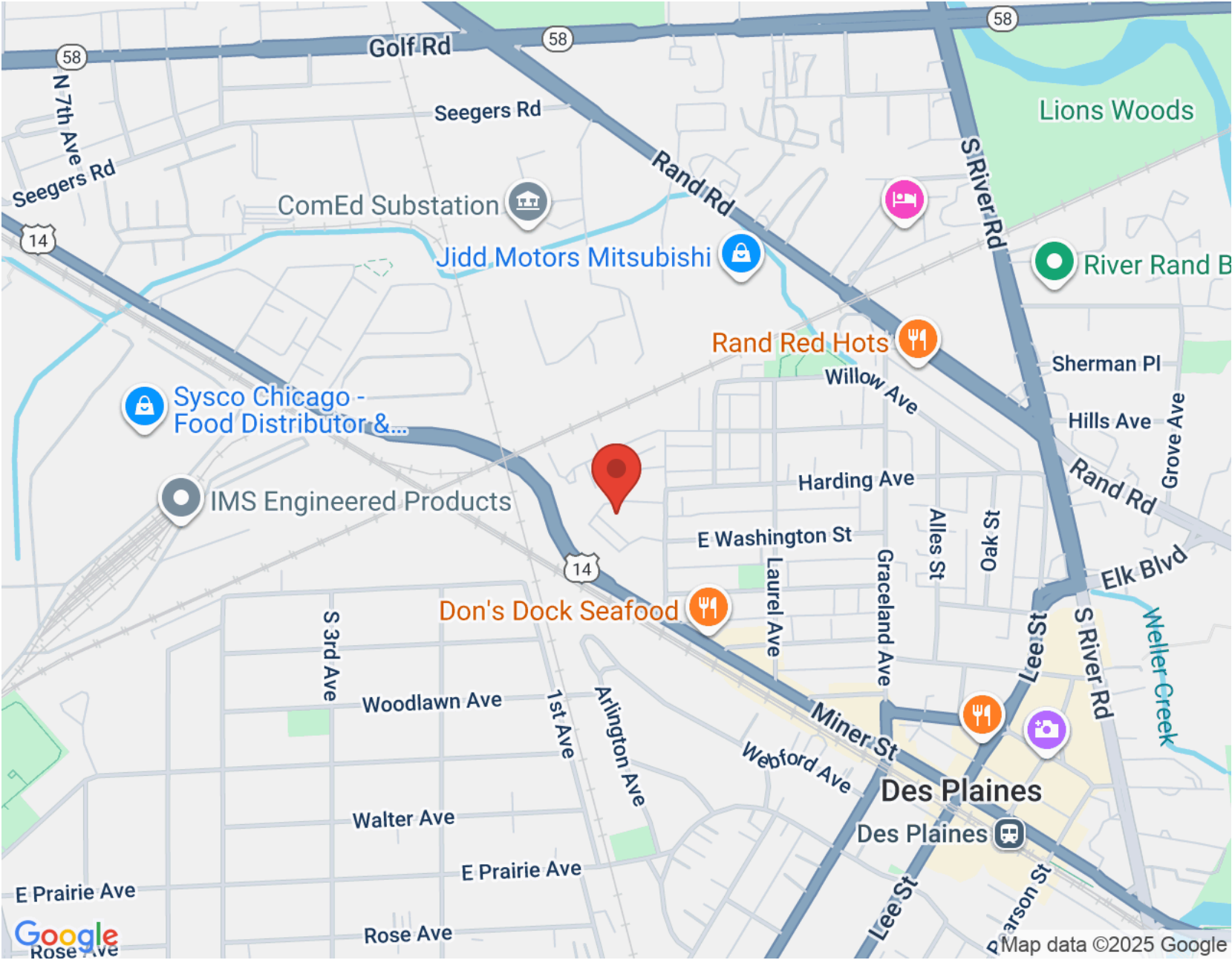
Downtown convenience - close to Metra - rarely available Stonegate Manor -a 4 building residential complex with center courtyard/Gazebo seating area. This 5th floor "Diamond" model with panoramic North view of new townhomes/residential areas. Living room/dining room combo with sliding glass doors to large roofed balcony. Large kitchen with oak cabinets and table eating area overlooking living room. Master bedroom with large walk in closet and private bath with tub. Spacious second bedroom and powder room off hallway. Full size washer and dryer. Heat, water, gas included in HOA fee. Soundproof construction - triple pane windows, flexicore ceilings/floors, 1 heated garage spot (#38) take elevator to B level, large storage closet in front of parking space. Pet Friendly building. Visitor parking out front. Owner occupied for 10+ years and bought another unit in this same building - speaks well of a good place to live.

- Heated Garage Space #38 (basement Level)
- Large Walk-in Storage Closet at Parking Space
- Both Bedrooms Have Walk-in Closets
- Large Roofed/Covered Balcony











DIRECT: (847) 456-8860

MAIN OFFICE: 847-797-0200

MARKKLOSS@ATPROPERTIES.COM

MARK.KLOSS.COM

MARK *MK* KLOSS



CHRISTIE'S
INTERNATIONAL REAL ESTATE