

3711 BRIDGEWATER DRIVE
VALPARAISO





HT STUDIOS



HT STUDIOS



HT STUDIOS



ROOM DIMENSIONS

LIVING ROOM : 12.5' x 17.5'

DINING ROOM : 18' x 10'

KITCHEN : 12' x 14'

PRIMARY BEDROOM : 17' x 13'

BEDROOM 2 : 13.5' x 10'

BEDROOM 3 : 13' x 10'

SUN PATIO : 13.5' x 9.5'

LAUNDRY ROOM : 12' x 6.5'

3 BEDROOM

2 BATH

TAXES: 4799.70

Spectacular Ranch in Bridgewater Estates! Home offers 1,815 square feet of comfortable living space, featuring 3 spacious bedrooms and 2 full bathrooms. The primary suite features a luxurious bathroom with dual sinks and a walk-in closet, complete with built-in storage. You'll love the New Luxury Vinyl Plank flooring that flows through the foyer into the open-concept living room and kitchen – perfect for entertaining! Step outside to a sunny patio surrounded by updated landscaping. Plus, enjoy maintenance-free living with lawn care and landscaping included through the HOA and conveniently located near golf courses, restaurants, and with easy access to major routes!



© VHT STUDIOS



© VHT STUDIOS



© VHT STUDIOS



© VHT STUDIOS



© VHT STUDIOS



© VHT STUDIOS



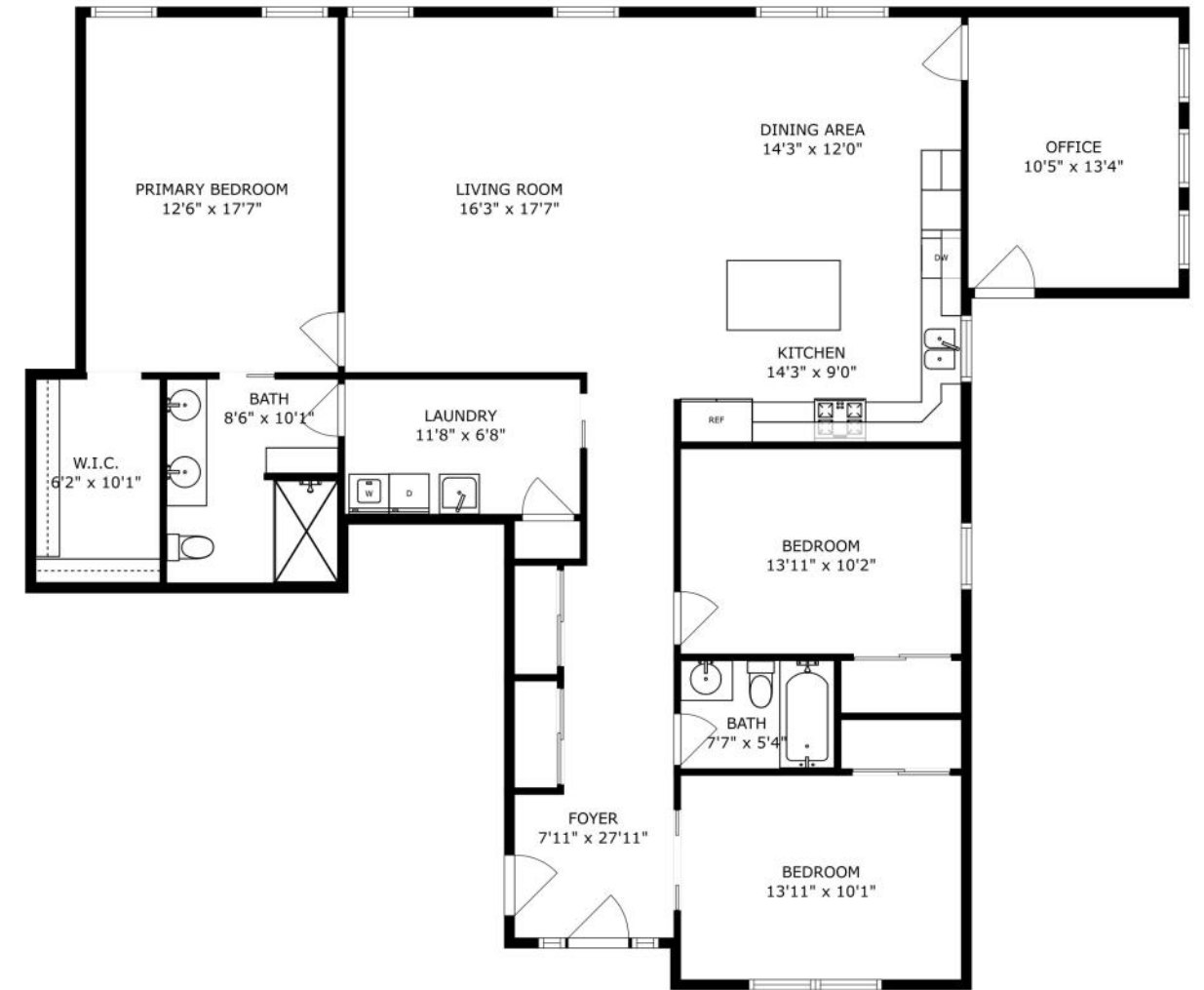
©VHT STUDIOS



©VHT STUDIOS



©VHT STUDIOS



SIZES AND DIMENSIONS ARE APPROXIMATE, ACTUAL MAY VARY.



KNOWN AS THE “VALE OF PARADISE,” **VALPARAISO** IS A BURGEONING CITY WITH AN ENGAGED COMMUNITY.

One of Valparaíso’s main attractions is its downtown area. The site of year-round events and local happenings, downtown Valparaíso is home to Central Park Plaza, Porter Health Amphitheater, and Urschel Pavilion, as well as several locally owned shops and restaurants. Among the community’s noteworthy events are the Chocolate Walk, Valparaíso Wine Festival, Valpo Brewfest, Fall Harvest Festival, Porter County Fair, and Valparaíso Popcorn Festival, which honors former resident Orville Redenbacher. Residents are also treated to a farmers market and a summer concert series.

Boasting 238 acres, Sunset Hill Farm County Park is a hub of activity offering trails, camps, field trips, fitness programs, birdwatching, and gardening. Another park that locals frequent is Rogers-Lakewood Park. The 122-acre park offers hiking, biking, fishing, boating, and picnicking.

Valparaíso’s thriving residential market features newly established subdivisions and historic downtown neighborhoods. The city’s 15-plus parks and 20 miles of pathways find their way throughout these neighborhoods, giving residents ample opportunity to spend time outdoors.

When it comes to public transportation, Valparaíso has it covered. The ChicaGO Dash provides express bus service from downtown Valparaíso to downtown Chicago. Meanwhile, the Valpo South Shore Connect takes bus riders from downtown to the Dune Park South Shore train station, which provides service to South Bend and Chicago. Within the city, residents can travel throughout Valparaíso on one of five V-Line bus routes.



CRYSTAL SOLIDAY

(219) 476-5278 CELL

219.531.2288

CRYSTALSOLIDAY@ATPROPERTIES.COM

WWW.ATPROPERTIES.COM/AGENTS/CRYSTALSOLIDAY



CHRISTIE'S
INTERNATIONAL REAL ESTATE