



3711 LAKE ST
BURLINGTON



3711 LAKE ST • BURLINGTON

@properties | CHRISTIE'S
INTERNATIONAL REAL ESTATE

LUXURY
PORTFOLIO
INTERNATIONAL



JAKE HANSEN BROKER | TEAM LEAD

262.705.4907 mobile
jmhhomes@atproperties.com
jmhhomeswi.com



SAVANNA HANSEN TEAM LEAD

262.358.3255 mobile
savhansen@atproperties.com
jmhhomeswi.com

3711 LAKE ST • BURLINGTON





3711 LAKE STREET

ROOM DIMENSIONS

Living Room	15'x27'
Dining Room	11'x20'
Kitchen	13'x17'
Breakfast Area	13'x14'
Primary Bedroom	13'x13'
Bedroom	13'x13'
Bedroom	13'x13'
Bedroom	12'x12'
Bedroom	12'x12'
Bedroom/Sitting Room ...	11'x15'
Laundry Room	7'x8'
Recreation/Storage	65'x32'

FEATURES

Overlooking the sparkling waters of Browns Lake, this 5-bedroom, 4.5-bath custom two-story home is designed to showcase sweeping views from nearly every room. Inside, open-concept living with vaulted ceilings and a massive kitchen sets the stage for gatherings. Both the first and second floors offer private primary bedrooms, while a huge 3-car attached garage adds convenience. A mostly level front yard gives effortless access to the shoreline, and the walk-out lower level with floor-to-ceiling windows awaits your finishing touch. With 85 feet of prime frontage on a 397-acre, 44-ft-deep full-sport lake, enjoy boating, fishing, and year-round recreation.



JAKE HANSEN BROKER | TEAM LEAD

262.705.4907 mobile
jmhhomes@atproperties.com
jmhhomeswi.com

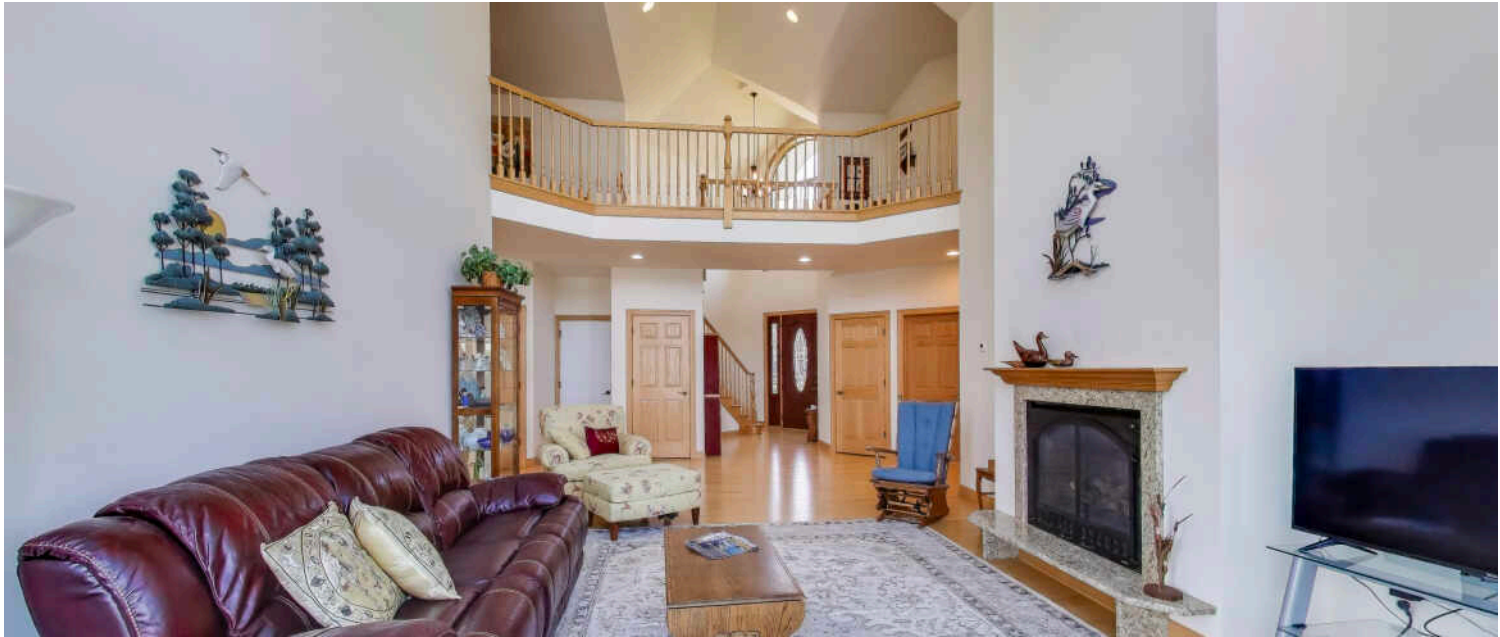


SAVANNA HANSEN TEAM LEAD

262.358.3255 mobile
savhansen@atproperties.com
jmhhomeswi.com



LIVING ROOM



LIVING ROOM



DECK OFF OF LIVING ROOM



KITCHEN



KITCHEN



KITCHEN



BREAKFAST AREA



DINING AREA



PRIMARY BEDROOM MAIN



PRIMARY ENSUITE



PRIMARY BEDROOM UPPER



PRIMARY ENSUITE



BONUS ROOM



BEDROOM



BEDROOM



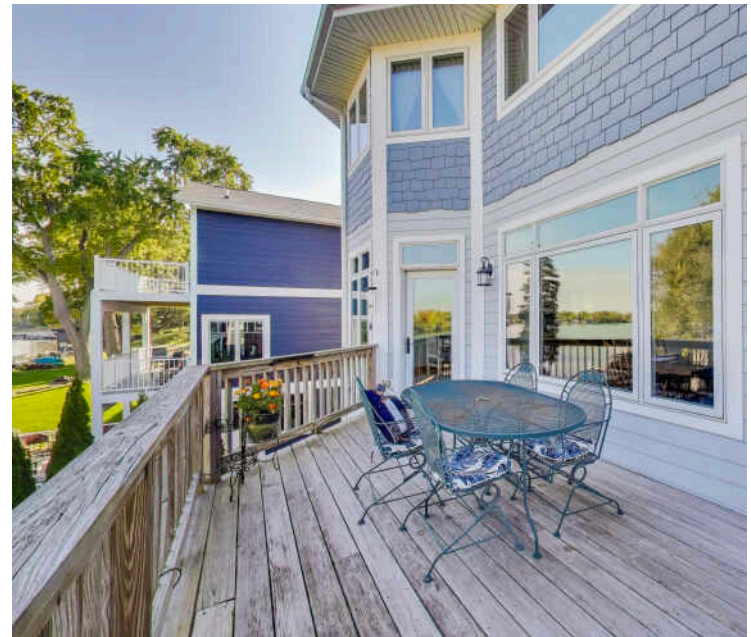
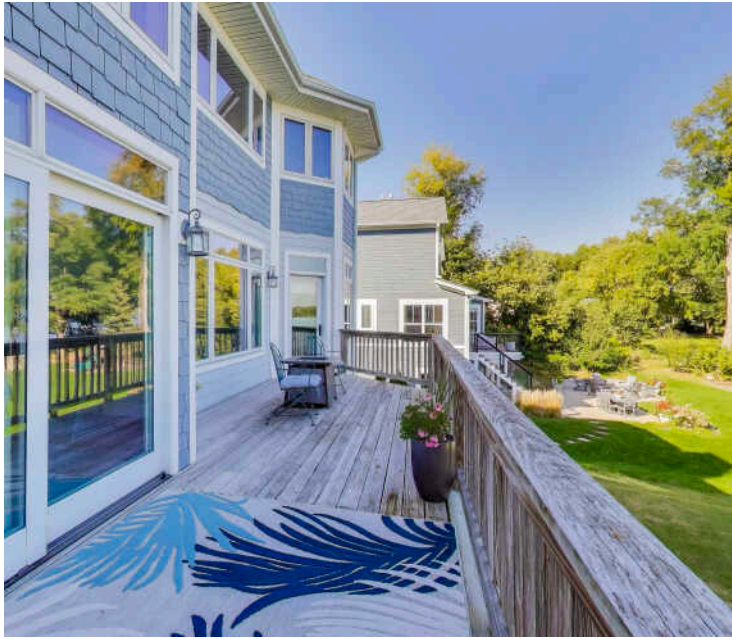
BEDROOM



LOWER LEVEL RECREATION ROOM

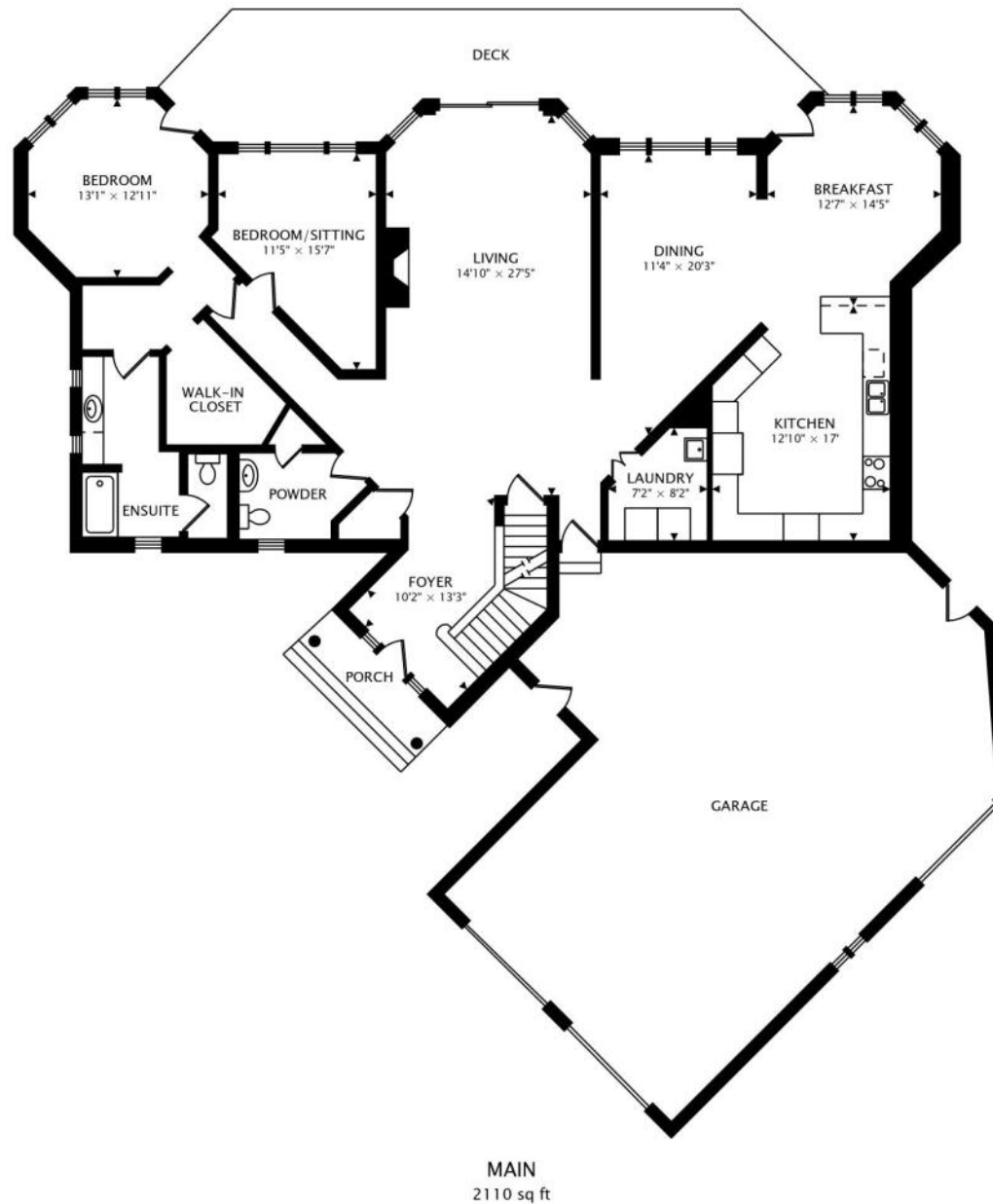


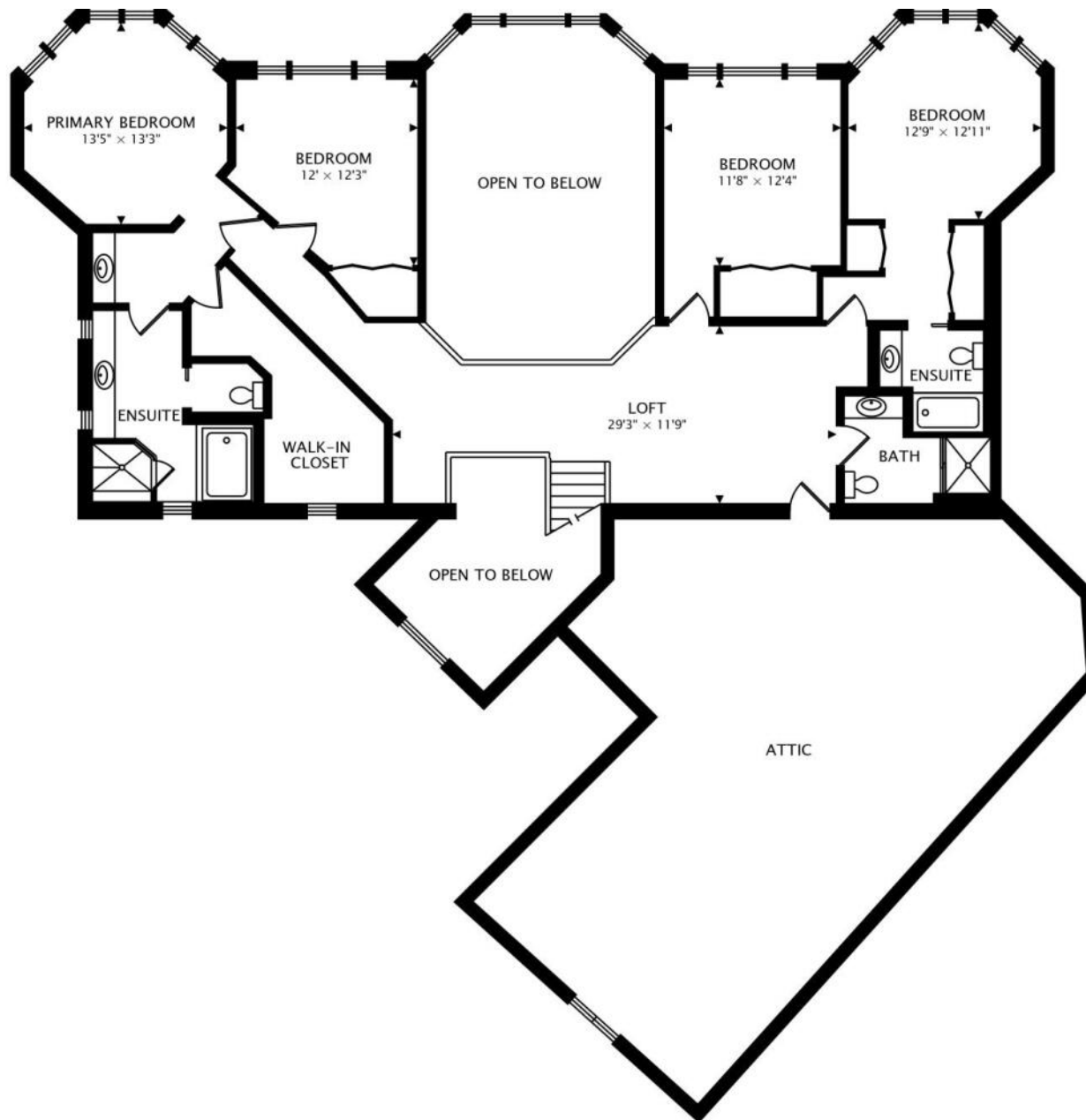
LOWER LEVEL RECREATION ROOM



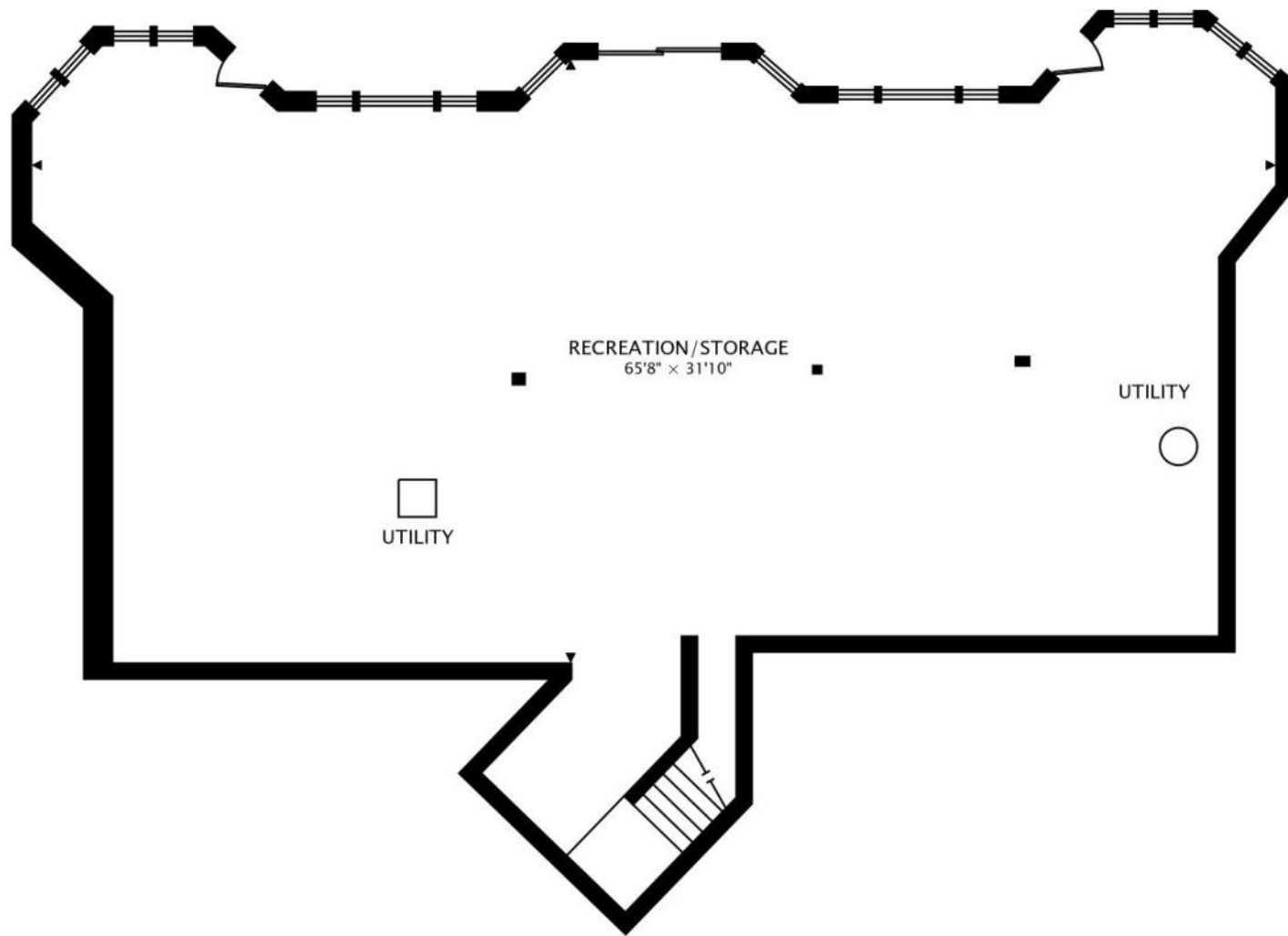
DECK







SECOND
1627 sq ft



LOWER
2148 sq ft BELOW GRADE

