

3714 N GREENVIEW AVENUE #1
SOUTHPORT CORRIDOR





3 BEDROOM
2.1 BATH
TAXES: \$11,115.75
ASSESSMENTS: \$295

STUNNING 3 BED, 2.1 DUPLEX DOWN ON COVETED TREE LINED GREENVIEW AVE

- Location: Coveted Greenview Ave, Southport Corridor, close to shops, restaurants, Brown Line, and Blaine Elementary School.
- Layout: Spacious 3 bed, 2.1 bath, two-level unit.
- Main Level Features: Large living area with balcony access. Open kitchen with white cabinetry, quartz countertops, marble subway tile, stainless steel appliances, beverage fridge, walk-in pantry, and free-standing island. Powder room for convenience.
- Lower Level: Primary suite with space for a king bed, workout area, walk-in closet, and access to front patio. En-suite bath with double vanity and oversized shower. Two additional bedrooms, one with a Murphy bed, adjacent to guest bath with marble vanity and tub/shower combo. Full-size, side-by-side laundry room and extra storage.
- Outdoor Spaces: Front patio and upper deck off the living room.
- Parking and Storage: One garage space + additional storage room included.
- Nearby: Steps from Southport Corridor, Wrigley Field, Gallagher Way, and more!





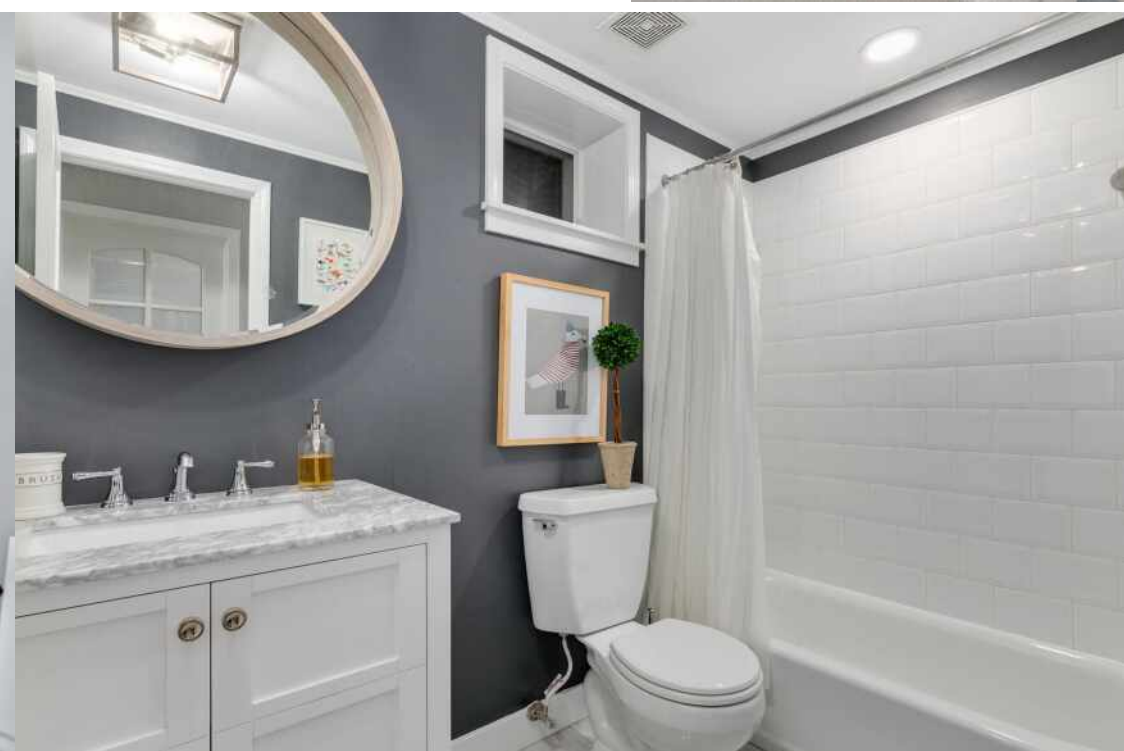
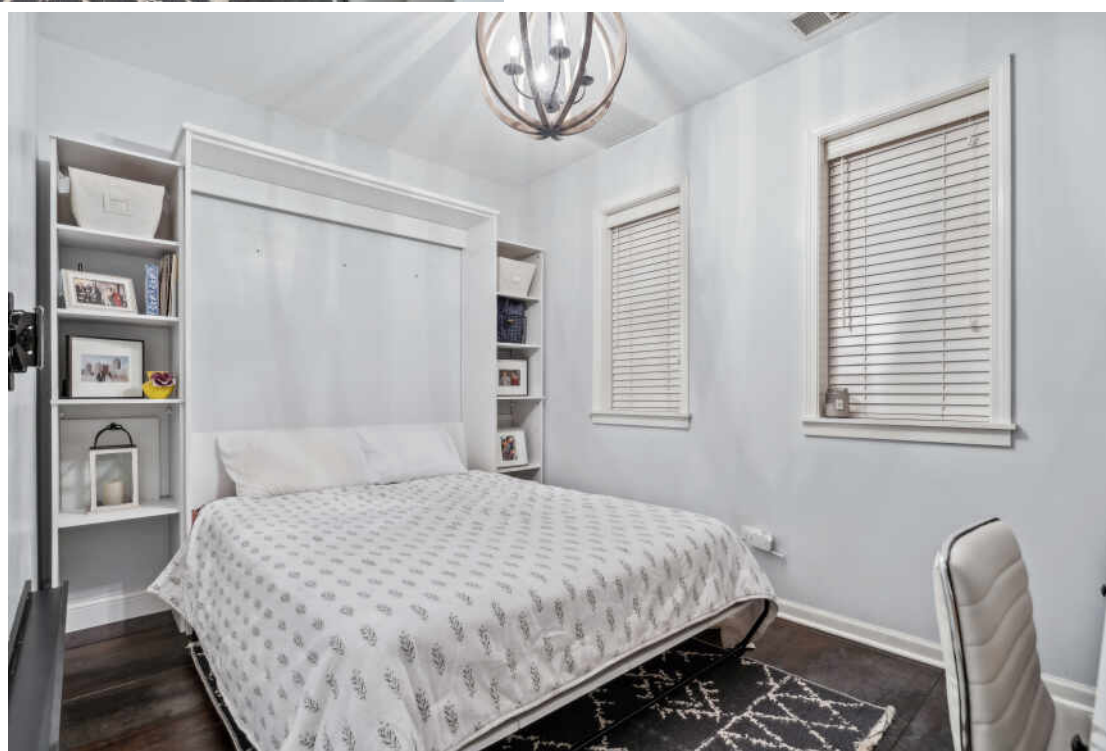
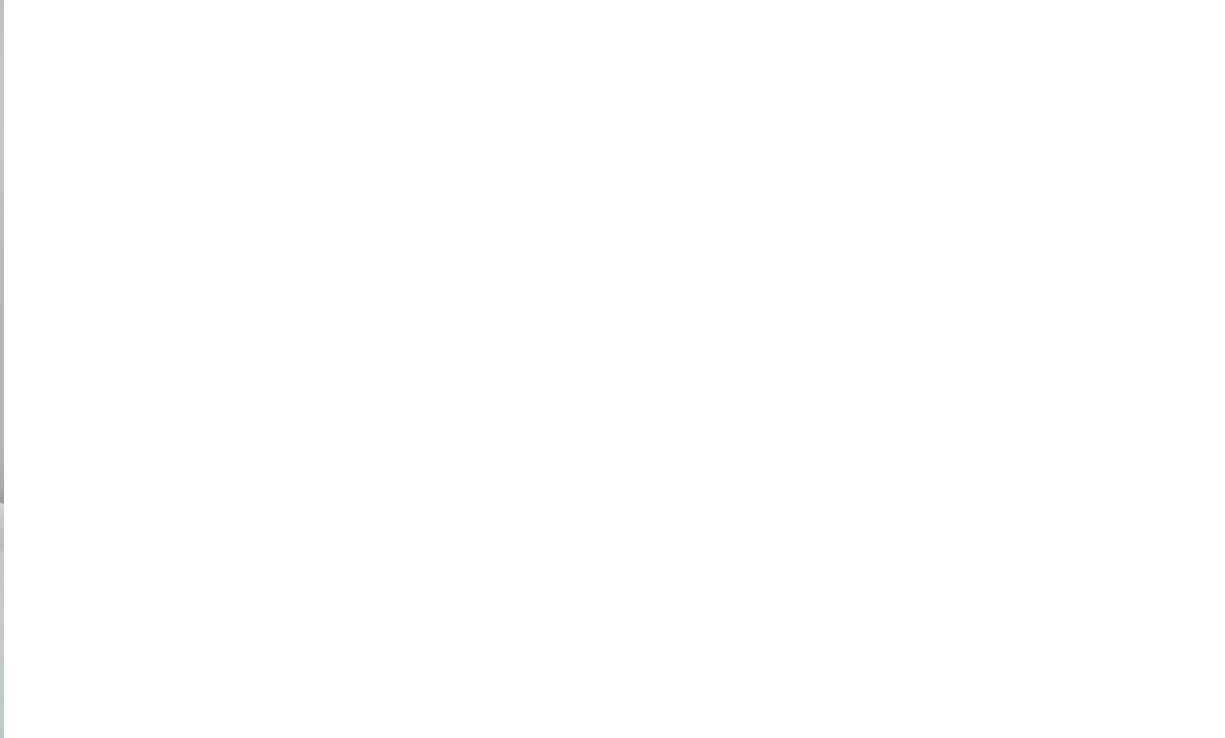


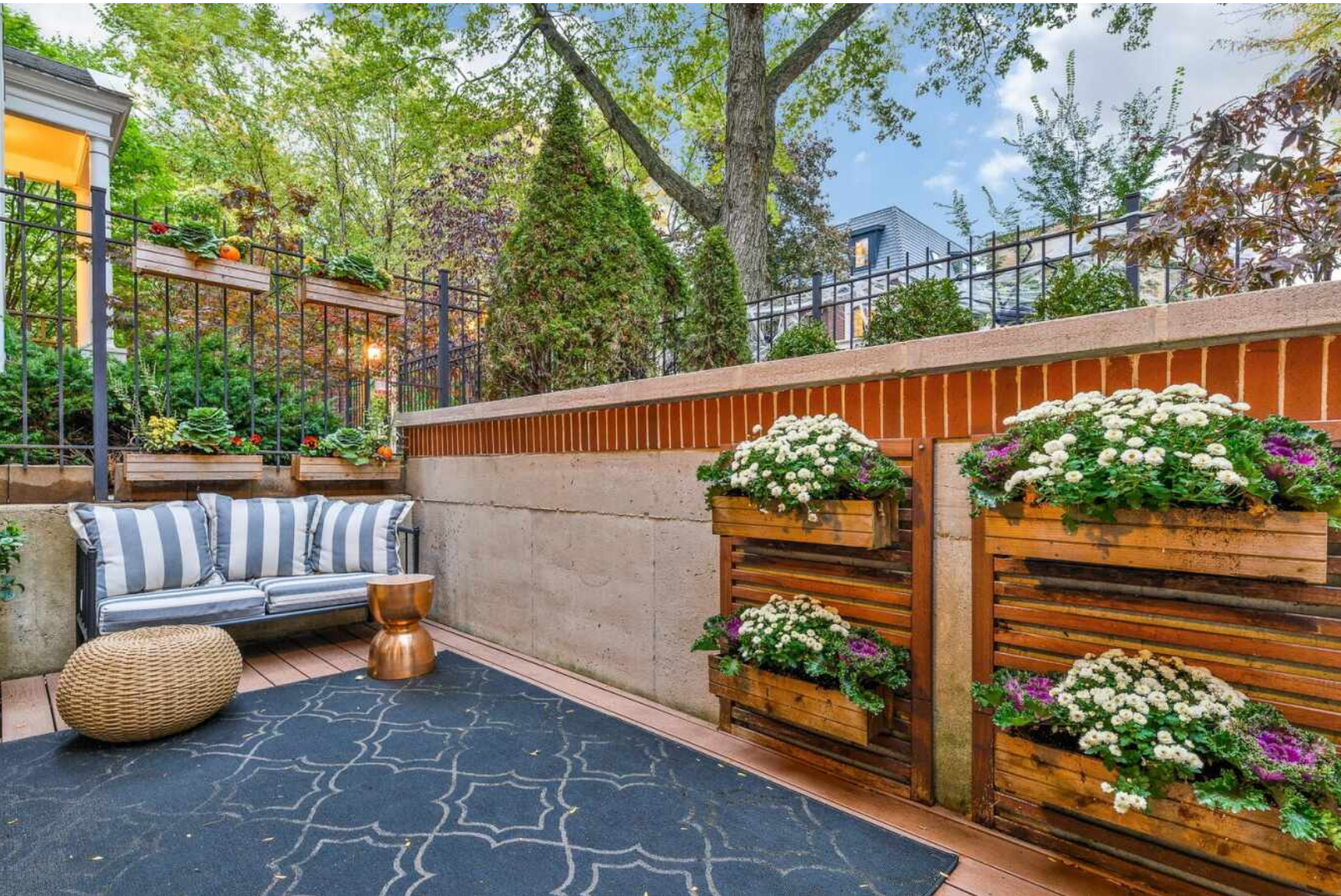


10 3714 N GREENVIEW AVENUE #1



3714 N GREENVIEW AVENUE #1 11







ELENA THEODOROS-TAMILLO

219.718.0061

ELENA@REFINERESIDENTIAL.COM

