

3750 N LAKE SHORE DRIVE #16H
LAKEVIEW





ROOM DIMENSIONS

LIVING ROOM : 13' × 25'

DINING ROOM : 14' × 15'

KITCHEN : 11' × 12'

PRIMARY BEDROOM : 12' × 17'

SECOND BEDROOM : 10' × 17'

2 BEDROOM

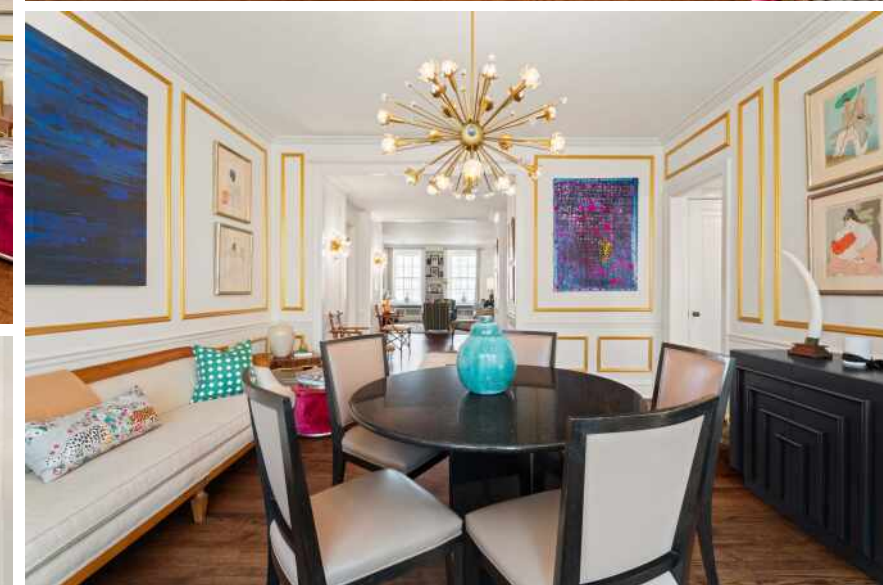
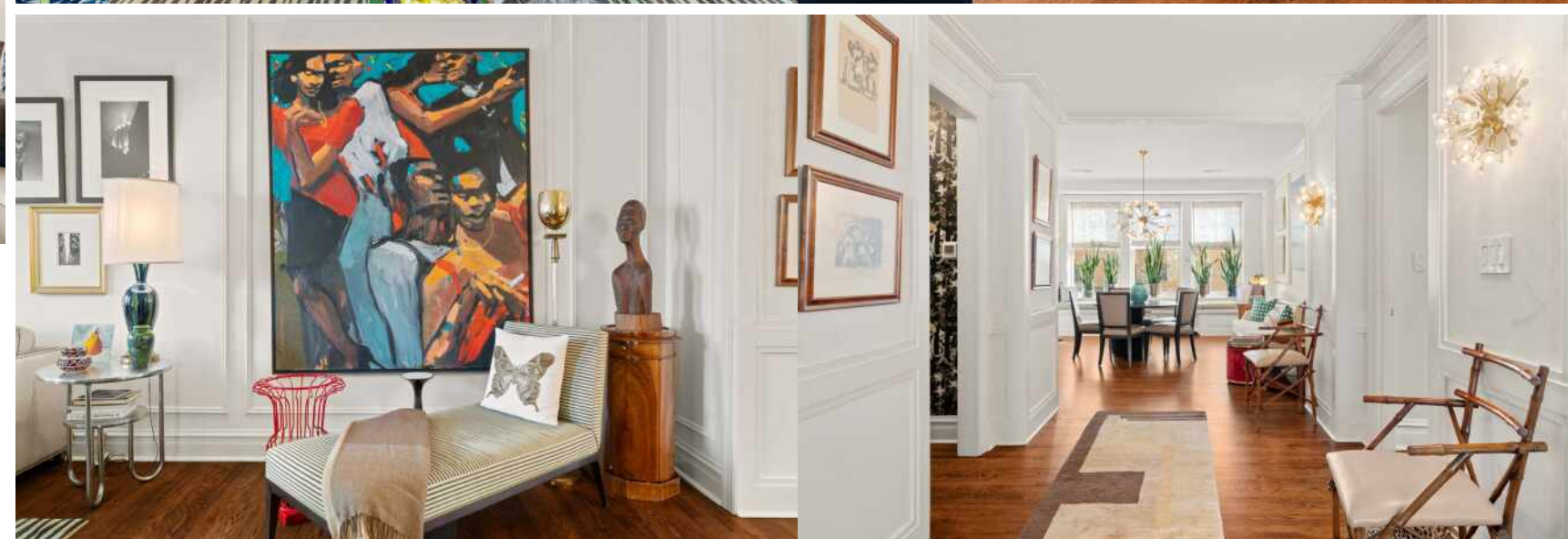
2 BATH

TAXES: \$6,370

ASSESSMENTS: \$2,473 / MONTH

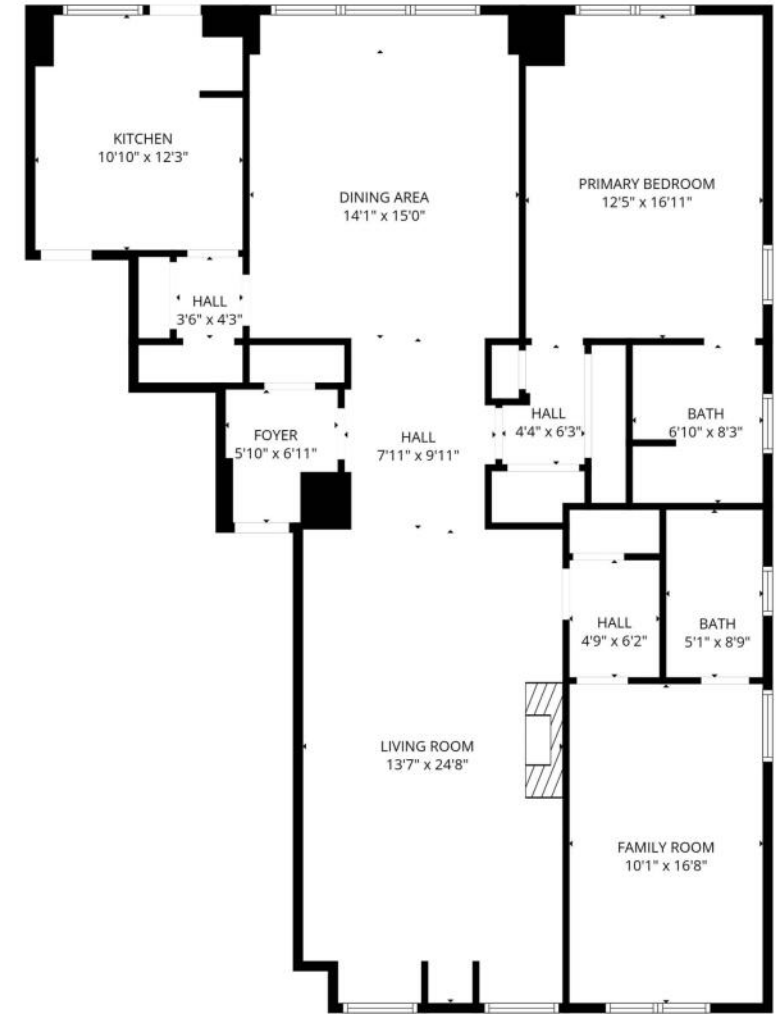
LUXURIOUS TOP-FLOOR PENTHOUSE | 3750 N LAKE SHORE DRIVE #16H

Nestled atop a historic 1920s Beaux-Arts masterpiece, this top-floor Lakeview penthouse at 3750 N Lake Shore Drive offers a rare blend of timeless Art Deco architecture and modern luxury. Designed by Michelle Herman of Marvin Herman & Associates, this elegant 2-bed, 2-bath residence features custom-stained hardwood floors, sun-filled living room with gas fireplace, ornate millwork, wainscoting, and crown molding throughout. The chef's kitchen boasts high-end Viking appliances, white shaker cabinets, farmhouse sink, imported marble countertops, and subway tile backsplash. The formal dining room showcases beautiful city and skyline views from a custom window seat, perfect for entertaining. Both bedrooms are ensuite, including a spacious primary suite with walk-in shower, and ample closet space. Additional upgrades include new central air, custom lighting, wall coverings, and window treatments. Located in one of Lakeview's most prestigious full-service buildings offering 24-hour door staff, fitness center, indoor pool, party room, playroom, on-site maintenance, and storage. Steps to Belmont Harbor, Lake Michigan, Lincoln Park, CTA Red Line, shopping, dining, and entertainment. Experience the perfect combination of historic charm and modern sophistication in this Lakeview penthouse-a rare offering in one of Chicago's most iconic co-ops.

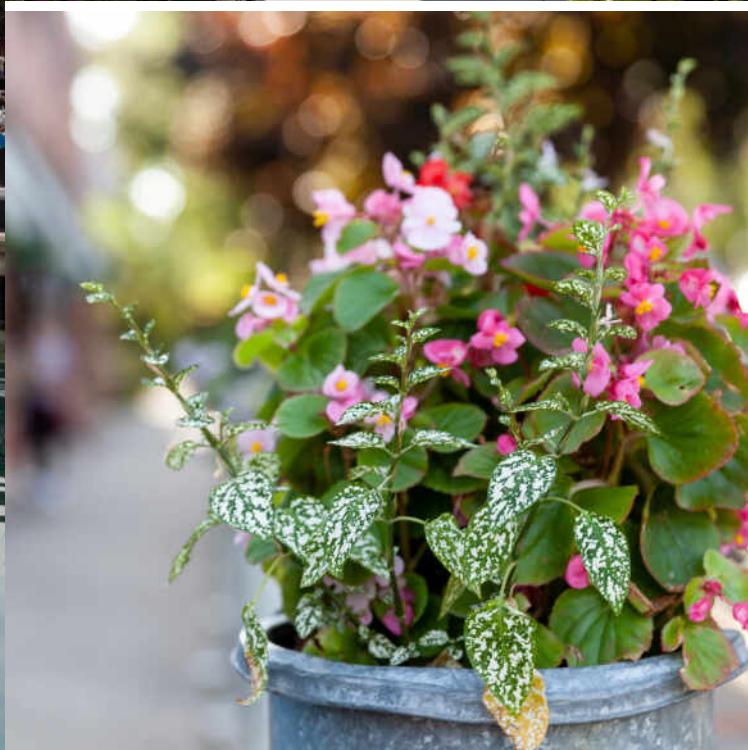








FLOOR PLAN CREATED BY CUBICASA APP. MEASUREMENTS DEEMED HIGHLY RELIABLE BUT NOT GUARANTEED.



CHICAGOANS WILL FIND MORE THAN A FEW OF THEIR FAVORITE THINGS IN **LAKEVIEW**, ONE OF THE LARGEST NEIGHBORHOODS ON THE CITY’S NORTH SIDE.

For starters, there’s Lakeview’s proximity to the beach and public transit, quiet residential streets, thriving restaurant and bar scene, and Wrigley Field.

Then there’s the neighborhood’s historic theaters and notable architecture. The Music Box Theater has been operating since it opened in 1929, originally showing silent films accompanied by a live organ player. It now plays independent and foreign films.

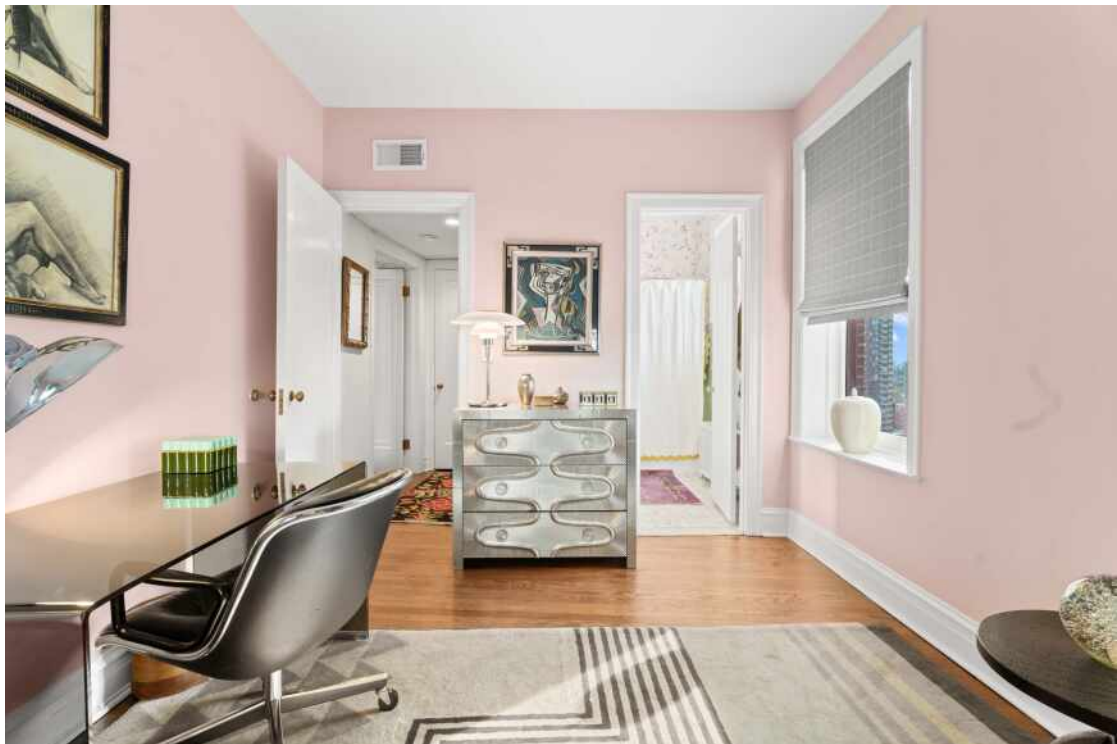
Did we mention the outdoor festivals, farmers markets, nightlife, and cultural attractions? Lakeview is home to the Belmont Theater District with over 30 theaters and live performance venues near the Belmont “L” station. Residents also have a front-row seat to the Chicago Marathon, Chicago Pride Parade, and Bike the Drive.

And we can’t forget shopping – shops on the Southport Corridor, independent businesses on Lincoln Avenue, and unique boutiques sprinkled throughout the neighborhood.

Lakeview includes a variety of housing styles and prices. Homes run the gamut from vintage walk-ups, condominiums, new construction three-flats, loft buildings, converted courtyard buildings, and high-rises. There are also a variety of single-family homes from stately mansions near Lincoln Park to contemporary new construction throughout the neighborhood.



NOTES





JONATHON SPRADLING

INSTA: @JONATHONSPRADLING

312.888.6197

JSPRADLING@ATPROPERTIES.COM

WWW.CHICAGOLUXELIVING.COM

Spradling | Roberts

chicagoluxeliving.com



JASON M ROBERTS

3125133344

JMROBERTS@ATPROPERTIES.COM

WWW.CHICAGOLUXELIVING.COM



CHRISTIE'S
INTERNATIONAL REAL ESTATE