



375 WASHINGTON ROAD · LAKE FOREST

375 WASHINGTON ROAD
LAKE FOREST



@properties | CHRISTIE'S
INTERNATIONAL REAL ESTATE

LP LUXURY
PORTFOLIO
INTERNATIONAL



SUSAN AMORY WENINGER BROKER

1 7738826194 mobile
1 8472950700 office
susanamory@atproperties.com

375 WASHINGTON ROAD · LAKE FOREST





375 WASHINGTON ROAD

ROOM DIMENSIONS

Living Room	18'x26'
Family Room	16'x28'
Library	12'x13'
Office	8'x10'
Dining Room	16'x18'
Kitchen	11'x18'
Mudroom	8'x11'
Primary Bedroom	18'x19'
Second Bedroom	11'x13'
Third Bedroom	13'x16'
Fourth Bedroom	11'x13'
Fifth Bedroom	12'x16'
Sixth Bedroom	14'x17'
Recreation Room	20'x40'
Laundry	6'x8'

FEATURES

This truly exceptional East Lake Forest residence, designed by renowned architect Stanley Anderson, offers a rare blend of timeless architectural elegance and sophisticated modern luxury. Meticulously updated in 2022, the home received the prestigious Historic Preservation Rehabilitation Award, celebrating its thoughtful restoration and impeccable craftsmanship. A gracious foyer welcomes you into a sun-drenched, south-facing living room where elegant architectural details and fireplace create a warm yet refined setting. The striking lacquered library offers a dramatic and sophisticated retreat. At the heart of the home is a stunning, well-appointed gourmet kitchen that opens seamlessly to a dramatic family room with soaring vaulted ceilings. A built-in banquette, stylish wet bar and ice maker further elevate the home's entertaining appeal. French doors lead to bluestone patios. The dining room is both inviting and elegant with French doors that open to the gardens. A private office and mudroom adjacent to the attached garage provide convenience. Upstairs, the primary suite serves as a serene retreat, featuring dual dressing rooms and a spa-inspired bath. One family bedroom includes a beautifully renovated en-suite bath completed in 2023, while the recent expansion introduced three additional bedrooms with vaulted ceilings and a beautifully appointed bath. The finished lower level includes a spacious recreation room, sixth bedroom, full bath, and an impressive wine cellar. Designed professionally by Perennial Gardens in 2022, the landscaping showcases lush plantings, elegant bluestone patios, a stunning stone fire pit, tranquil water feature, and a new irrigation system creating a private oasis.



SUSAN AMORY WENINGER BROKER

1 7738826194 mobile
1 8472950700 office

susanamory@atproperties.com











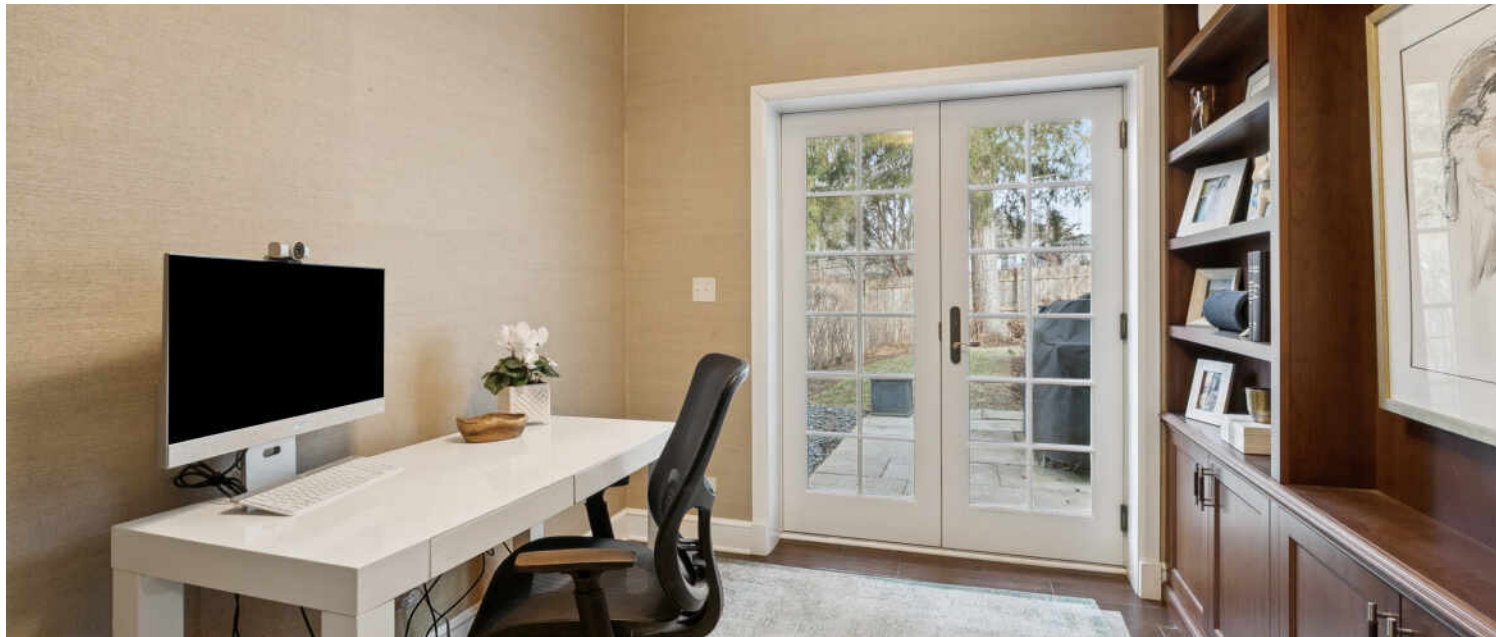
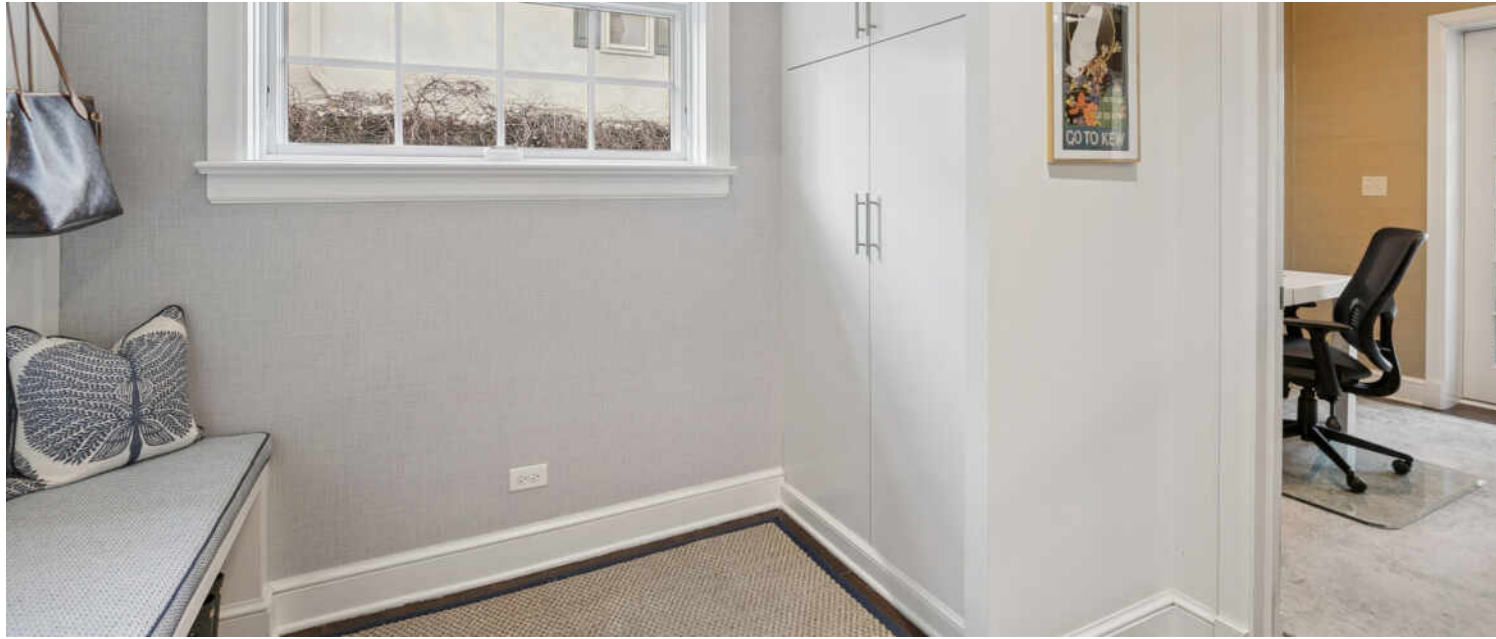
























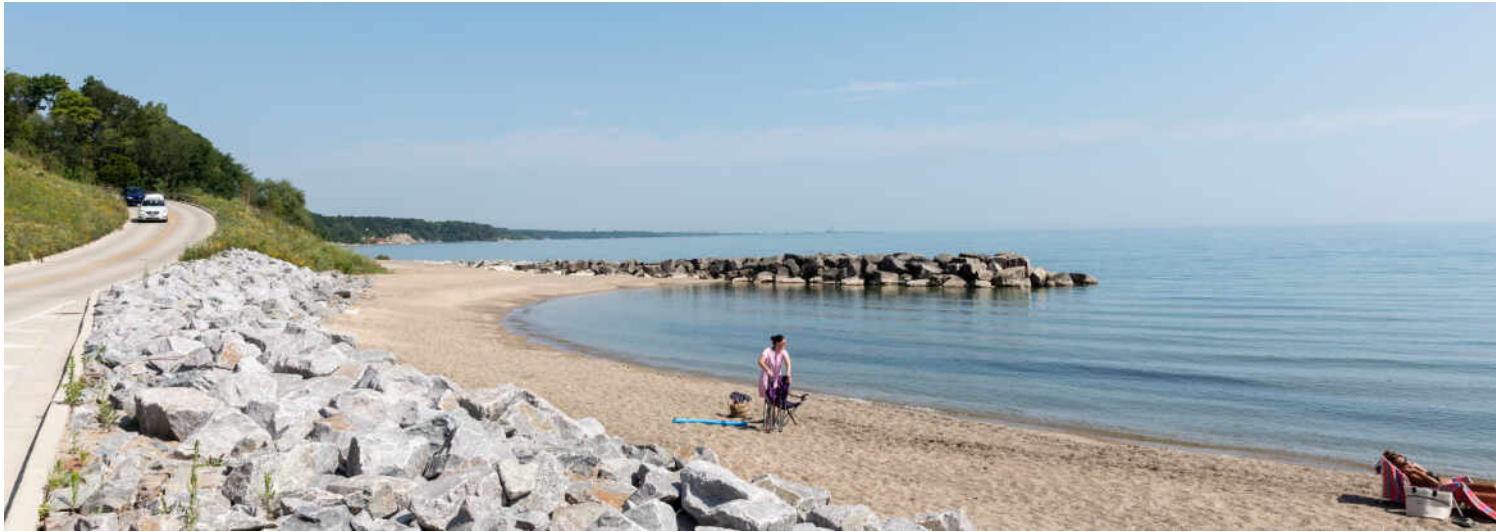












WITH ITS TOWERING TREES, PICTURESQUE STREET PLAN, AND BLUFFS
OVERLOOKING LAKE MICHIGAN, IT'S EASY TO SEE WHY **LAKE FOREST** IS KNOWN
FOR ITS NATURAL BEAUTY.

Locals love the architecturally significant homes, flawless landscaping, and scenic lakefront setting – all of which contribute to Lake Forest's effortless beauty. The community also has a quaint downtown with a variety of shops and restaurants at Market Square.

Rich in history, the community offers true luxury in a resort-style setting. Historic estates built by legendary architects Howard Van Doren Shaw, David Adler, and Henry Ives Cobb are interspersed among elegant homes with impeccable landscaping. Properties range from multi-million-dollar mansions to maintenance-free new construction condominiums and single-family homes with a convenient in-town location.

The community boasts schools including Lake Forest Academy, Lake Forest College, and Lake Forest Graduate School of Management.

At the heart of Lake Forest is Market Square, a historically significant landmark and charming hub of boutique shopping and dining. Cultural and recreational opportunities abound including the Gorton Community Center and Lake Forest Recreation Center, as well as at beautiful beaches, golf courses, and biking trails. There is also a Metra station right in town, providing commuters with convenient access to downtown Chicago.

@properties® | CHRISTIE'S
INTERNATIONAL REAL ESTATE

Leading REAL ESTATE
COMPANIES
OF THE WORLD®

LP
LUXURY
PORTFOLIO
INTERNATIONAL

