



3761 S MORGAN STREET #A
BRIDGEPORT

@properties®

CHRISTIE'S
INTERNATIONAL REAL ESTATE



ROOM DIMENSIONS

LIVING ROOM : 19' × 14'

DINING ROOM : 15' × 9'

KITCHEN : 16' × 16'

PRIMARY BEDROOM : 15' × 13'

SECOND BEDROOM : 10' × 13'

THIRD BEDROOM : 10' × 9'

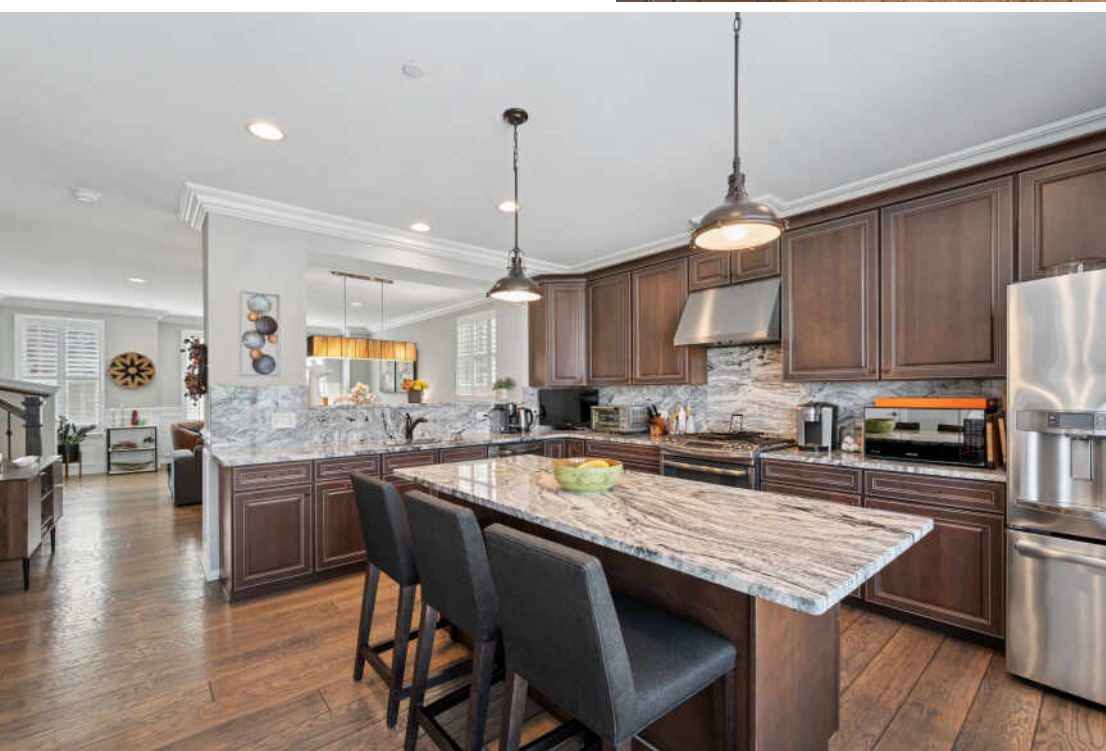
FOURTH BEDROOM : 12' × 15'

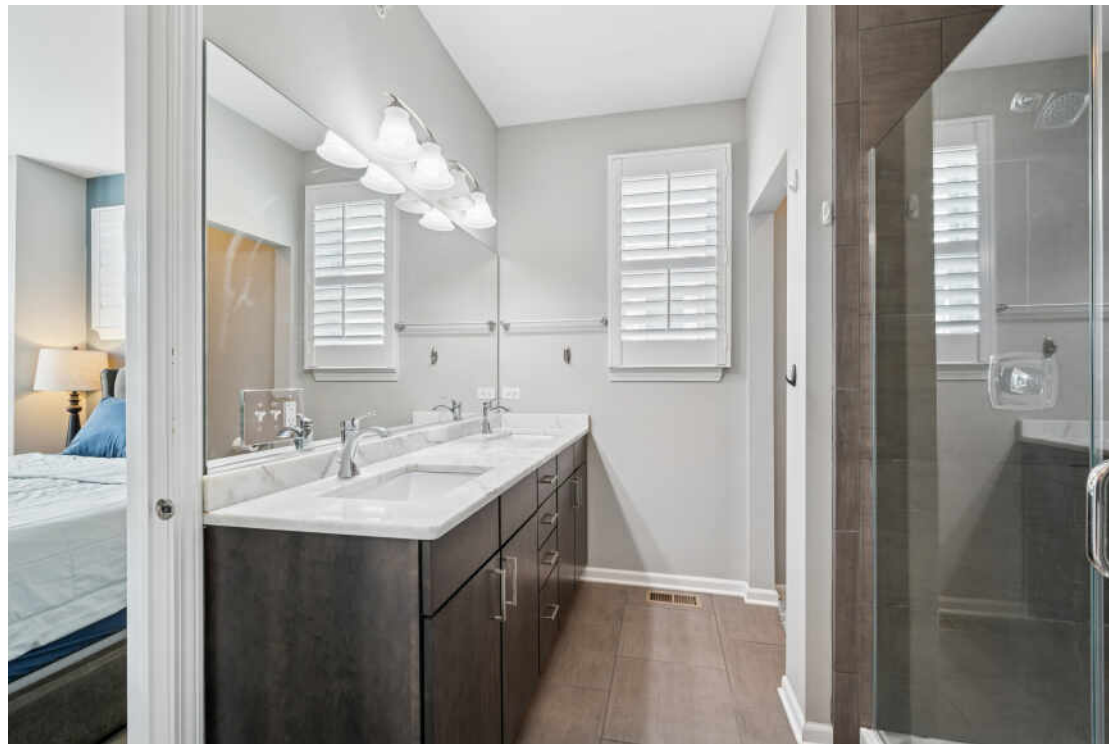
4 BEDROOM

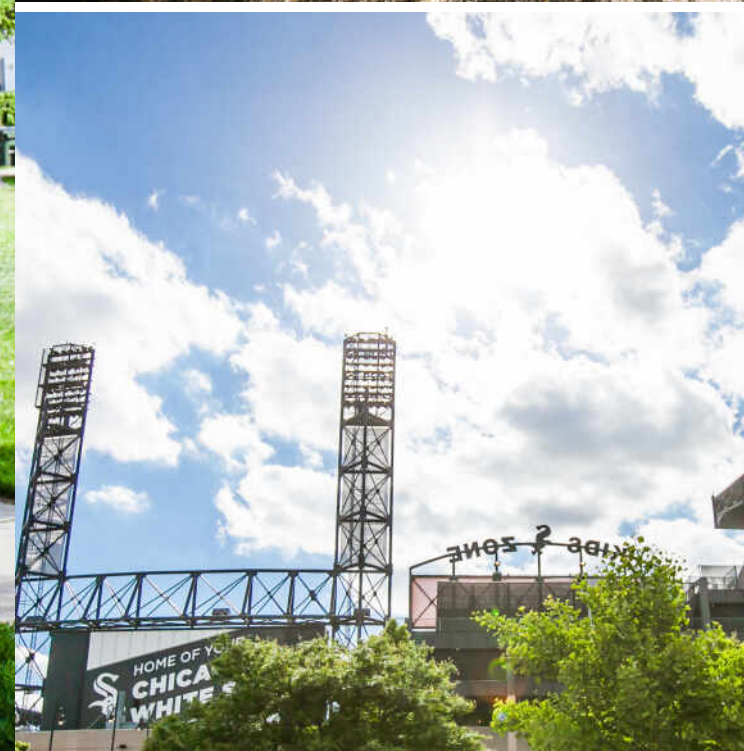
3.1 BATH

BEAUTIFUL IN BRIDGEPORT!

Beautiful in Bridgeport! welcome to your new home in Lexington Square; a bright and spacious tri-level townhome in the heart of chicago's historic bridgeport neighborhood. this home is thoughtfully designed for both comfort and style with an open layout, high ceilings, crown molding throughout, granite counter tops, all GE ss appliances, outdoor spaces on every level and a 2 car attached garage. 1st floor has a gracious foyer w/ built in granite counter & cabinet, coat closet, ensuite bedroom/office space/den; perfect for relaxing, working, guests, etc. the 2nd floor offers a super-sized kitchen w GE stainless steel appliances, granite countertops, pantry & a large island w/ eat in option. enjoy grilling right off the kitchen from the attached deck! dining room and living room are ideal for gatherings. a pantry, powder room & full size washer & dryer are also on this level. the third floor features three comfortable bedrooms, including a serene primary suite w/ a walk-in closet & 5-piece bath w/ double sinks, double shower & large tub. enjoy sunrises, sunsets & city views on your rooftop deck spanning nearly 360 degrees. in addition to being home to the chicago white sox, bridgeport offers a variety of art & history including: the bridgeport art center, the zhou art center, the chicago maritime museum, the ramova theatre & an assortment of local restaurants and shops.







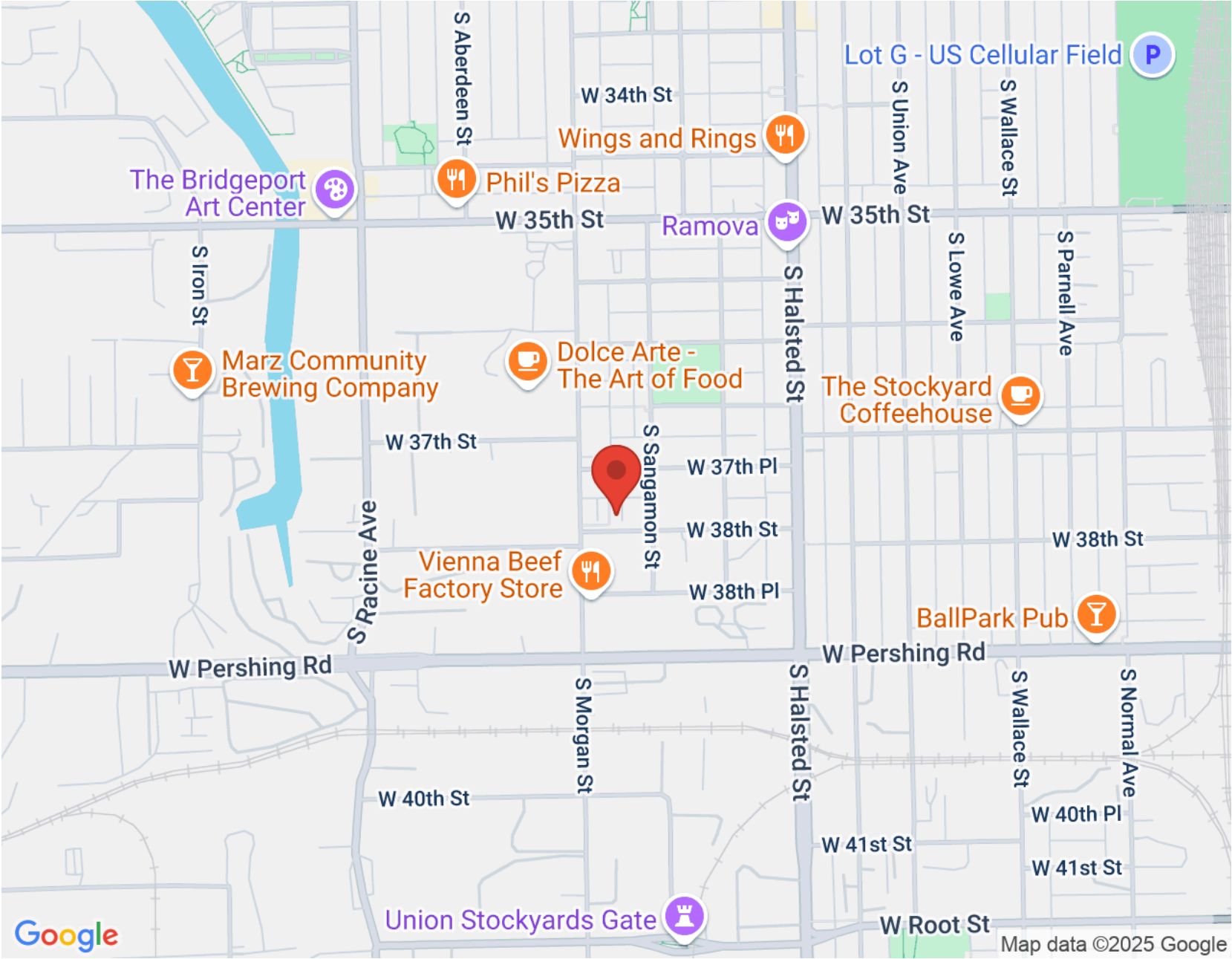
BRIDGEPORT IS THE BIRTHPLACE OF FIVE CHICAGO MAYORS AND THE HOME OF THE CHICAGO WHITE SOX. BUT THAT'S ONLY PART OF ITS STORY.

Today, the close-knit neighborhood is experiencing a renaissance of sorts. In recent years, residential developers have jumped on opportunities to convert older warehouses and manufacturing plants into loft homes. In addition to converted warehouses, new construction single-family homes and three-flat walk-up condominiums are springing up alongside Bridgeport's historic bungalows.

Bridgeport has become a thriving artists' community with multiple galleries, the Zhou B Art Center, and neighborhood art festivals. The Bridgeport Art Center, occupying the former 500,000-square-foot Spiegel Catalog Warehouse, provides a stunning creative space with incredible views for artists and events.

For the sports-minded, the excitement of a Major League Baseball game is right up the street when the White Sox play at Guaranteed Rate Field. Getting to the ballpark is as easy as taking the Red Line, which is located along the eastern side of the community.

Residents also enjoy being in close proximity to a popular brewery as well as local restaurants that offer a variety of cuisines.





KIM KERBIS, ABR, CRS, GRI, CNE, SRES, AHWD

REAL ESTATE BROKER

(312) 339-1849

KIMKERBIS@ATPROPERTIES.COM

WWW.LAKEEFFECTCHICAGO.COM



VASHTI ARAIA

REAL ESTATE BROKER

(312) 391 9301

VASHTI@ATPROPERTIES.COM



CHRISTIE'S
INTERNATIONAL REAL ESTATE