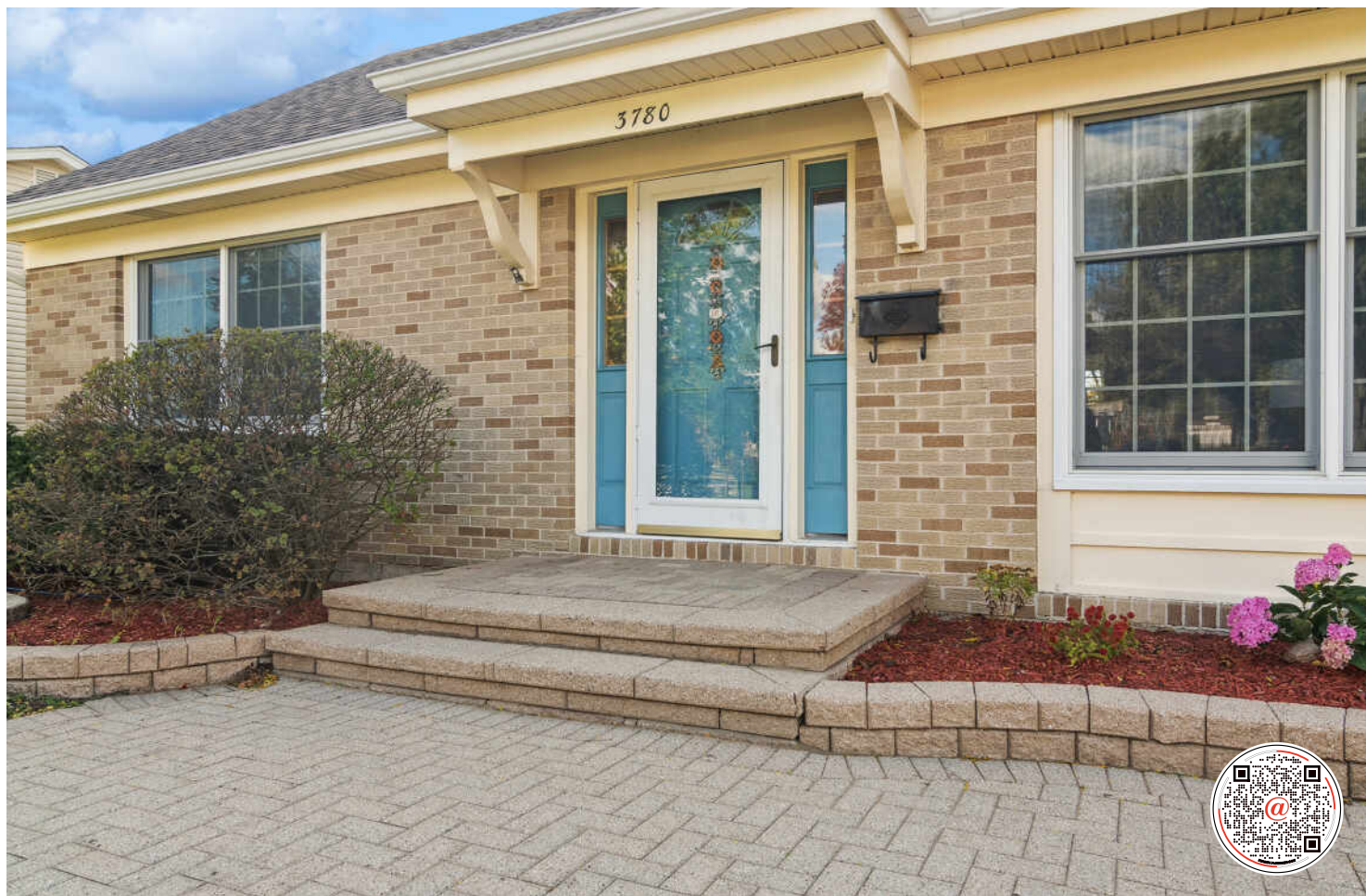


**3780 N FIRESTONE DRIVE**  
WINSTON KNOLLS / HOFFMAN ESTATES





**ROOM DIMENSIONS**

LIVING ROOM : 17' × 12'

FAMILY ROOM : 18' × 11'

KITCHEN : 18' × 11'

PRIMARY BEDROOM : 15' × 11'

SECOND BEDROOM : 14' × 12'

THIRD BEDROOM : 12' × 11'

LOFT : 10' × 11'

**3 BEDROOM**

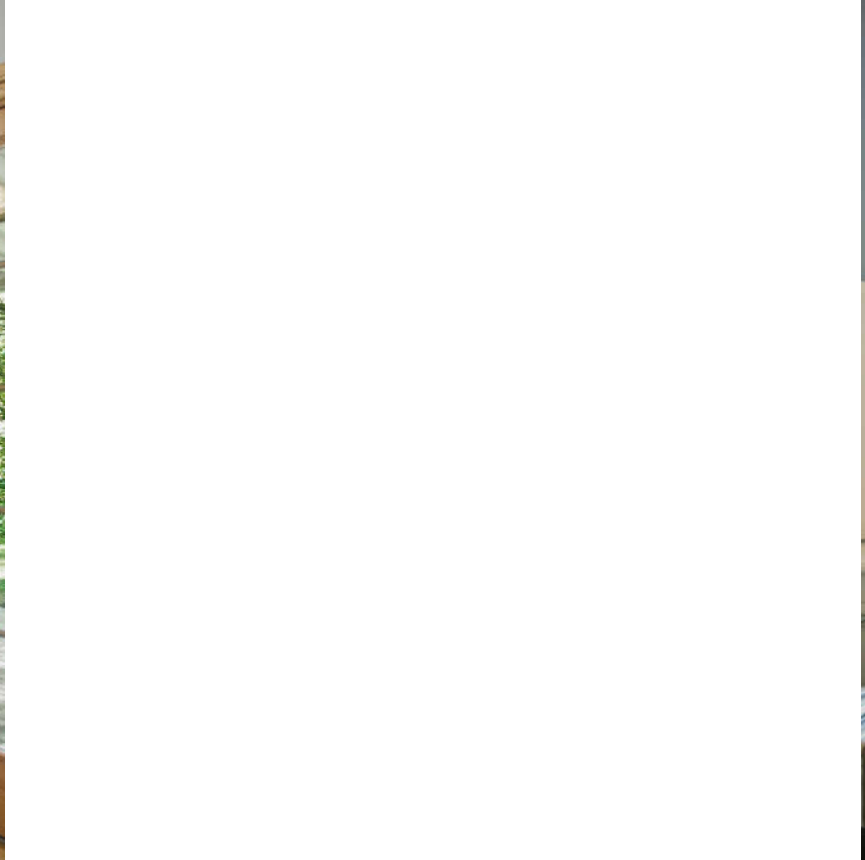
**2 BATH**

**TAXES: \$9,713**

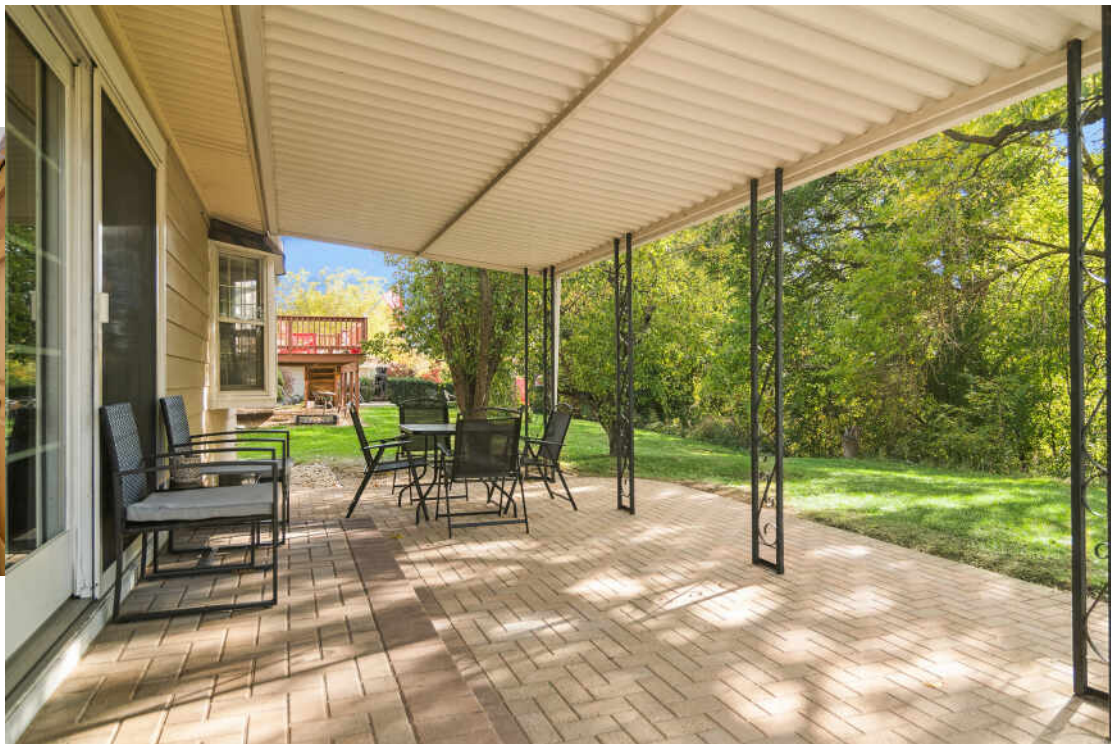
**AMAZING WINSTON KNOLLS HOME**

Welcome to this wonderfully maintained home in sought after Winston Knolls subdivision! A spectacular and newly refinished brick paver driveway and walkway greet you as you approach the entrance to this 3+ bedroom home which offers an open concept floor plan loaded with so many features! The main level boasts newer hardwood floors throughout, a spacious kitchen with stainless steel appliances, ample counter space, cabinets and a breakfast bar! Other highlights on the main level include a first- floor primary bedroom, full bath, formal living room, eating area, family room with brick, gas log fireplace, and a mud room & laundry with exterior access to the amazing backyard. On the second level, you will find 2 additional generous sized bedrooms, a full bath and a nice loft ideal for use as an office or can be closed off for a 4th bedroom. All bedrooms have ceiling fans and lots of natural light coming in from the oversized windows. Step outside to the backyard oasis showcasing an expansive, covered brick paver patio and gorgeous yard. The unfinished basement provides plenty of storage and additional space to make your own. Recent improvements include a brand-new roof and gutters (2025), new AC (2024) newer carpeting and recently painted! Located within award winning District 15 Whitely Elementary, Thomas Jefferson Middle School & District 211 Fremd High School, the location can't be beat! Enjoy the convenience of neighborhood amenities: Willow Recreation Center, Bo's Run dog park, Dog park, Willow Skate Park, and the library as well as easy access to 2 Metra stations, I-90 and area shopping and restaurants. Welcome Home!













## TREE-LINED STREETS, ABUNDANT GREEN SPACE, AND AMPLE RECREATIONAL ACTIVITIES CHARACTERIZE THE VILLAGE OF **HOFFMAN ESTATES.**

The community offers easy access to nearby nature attractions such as the Spring Valley Nature Center & Heritage Farm in Schaumburg and the Deer Grove Forest Preserve in Palatine. Meanwhile, Bridges of Poplar Creek Country Club features an 18-hole golf course with over 6,000 yards of fairways and greens. Golf aficionados also take to the Hilldale Golf Club and Highland Woods Golf Course.

The village is most notably home to the Now Arena, providing sports, musical, and theatrical entertainment throughout the year. Residents also enjoy trying different cuisines at Hoffman Estates' many restaurants.

In the summertime, locals and visitors gather at the Seascope Family Aquatic Center, where they can swim, dig in the sand, and go down any of the four water slides. Other recreational facilities include the Triphahn Community Center & Ice Arena, Willow Recreation Center, and the Club at Prairie Stone.

Hoffman Estates is located along I-90 and has access to major regional roadways such as Illinois Routes 58, 59, 62, and 72. Commuters are also served by two Metra rail lines, the Union Pacific Northwest Line and the Milwaukee District West Line.





NOTES \_\_\_\_\_

\_\_\_\_\_

\_\_\_\_\_

\_\_\_\_\_

\_\_\_\_\_

\_\_\_\_\_

\_\_\_\_\_

\_\_\_\_\_

\_\_\_\_\_

\_\_\_\_\_

\_\_\_\_\_

\_\_\_\_\_

\_\_\_\_\_

\_\_\_\_\_

\_\_\_\_\_



## VASI KOUFIS

(847) 942-5933

VASI@ATPROPERTIES.COM

WWW.REALPROSGROUP.COM



All specifications, features, designs, price, assessments, taxes and materials are subject to change without notice. Depicted floor plans and architectural renderings are only an artist's impression.

