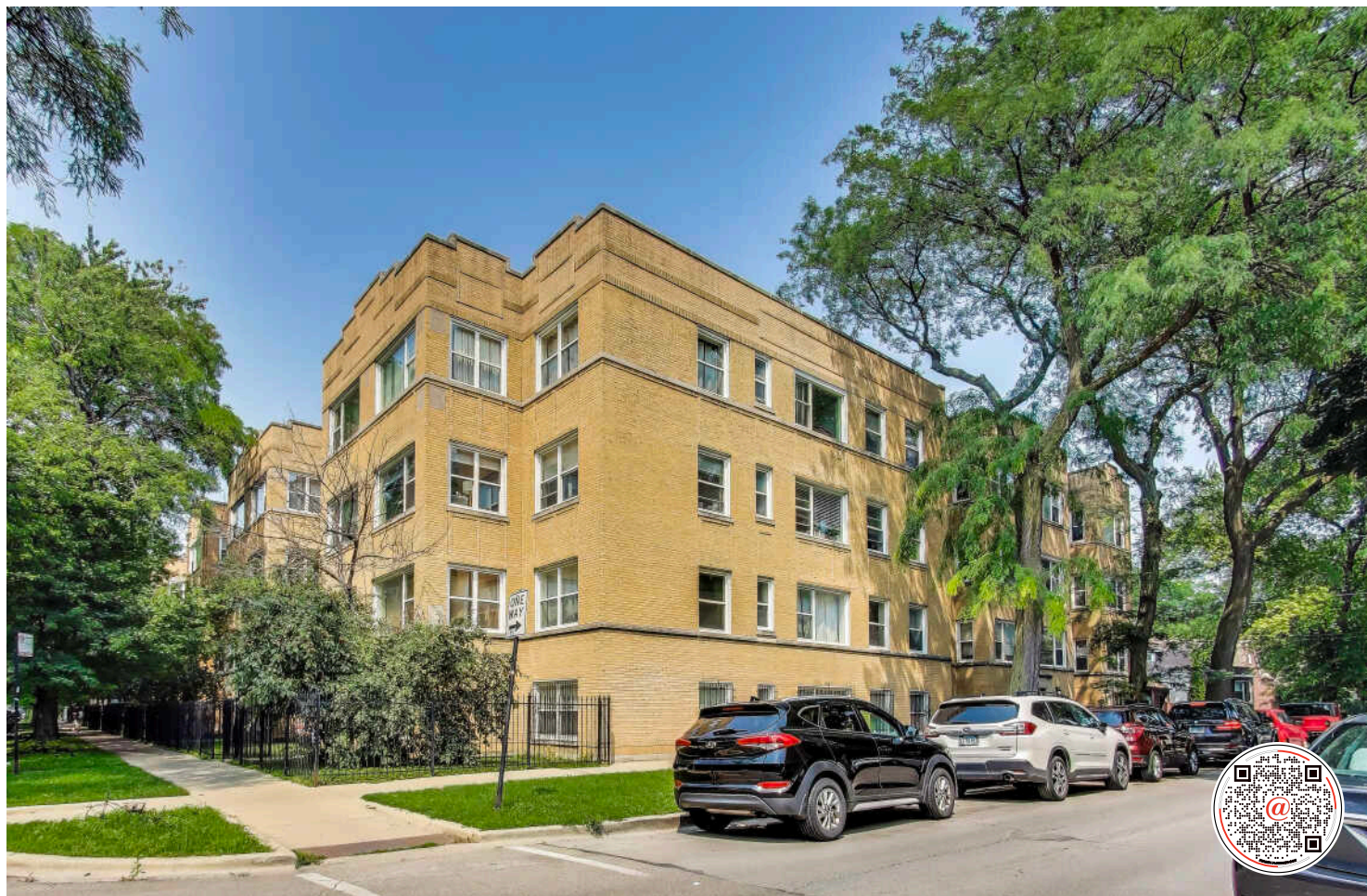


3816 W AINSLIE STREET #1
ALBANY PARK





ROOM DIMENSIONS

LIVING ROOM : 17' × 12'

DINING ROOM : 12' × 9'

KITCHEN : 12' × 11'

BEDROOM : 12' × 9'

DECK : 8' × 6'

SUNNY AND SPACIOUS 1 BEDROOM, 1 BATH +
DEN ON A BEAUTIFUL TREE-LINED STREET IN
HIGHLY DESIRED ALBANY PARK!

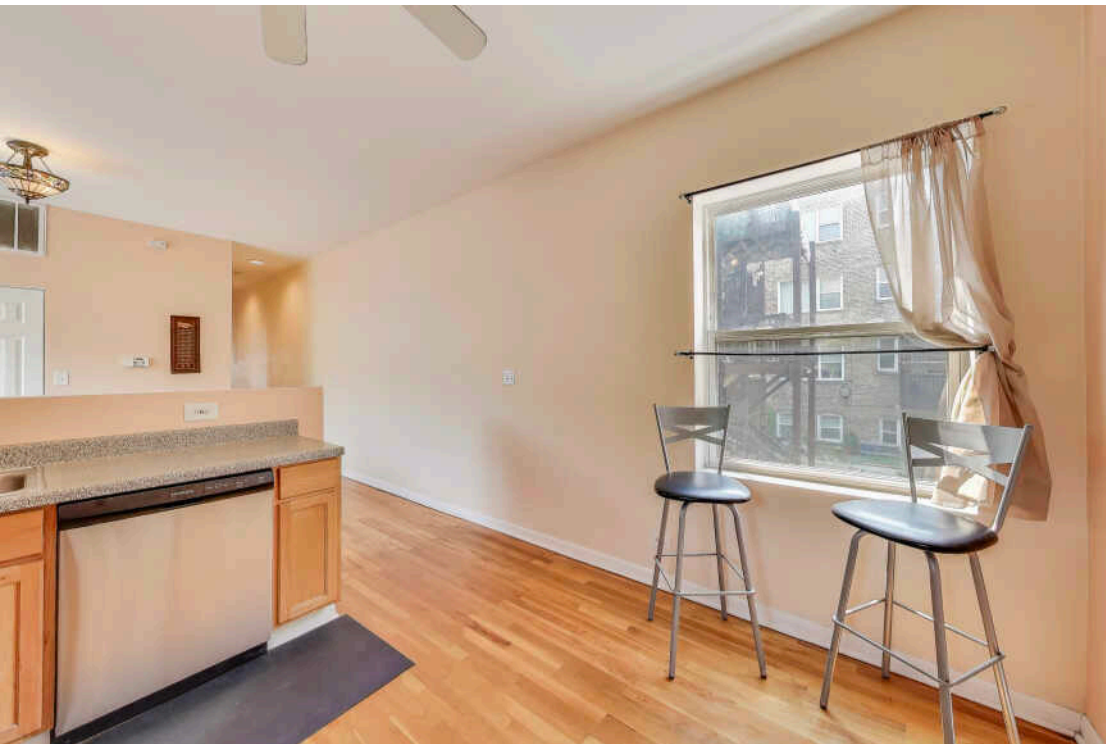
This oversized home (nearly 900 sq ft) lives larger than many 2-bedroom layouts in the area. You'll love the tall ceilings, abundant unobstructed windows that flood the space with natural light, and flexible floor plan. The versatile den can serve as a dining room, home office, or easily be enclosed for a true second bedroom. Charming vintage details include hardwood floors throughout, built-ins, and soaring ceilings, while modern updates bring everyday convenience-central heat/air, in-unit laundry, and all new stainless steel appliances in the spacious cook's kitchen. A private deck off the kitchen is perfect for relaxing outdoors. All this in an unbeatable location-steps to restaurants, shops, coffee, and just a short walk to the Brown Line, Lawrence bus, and easy access to I-94.

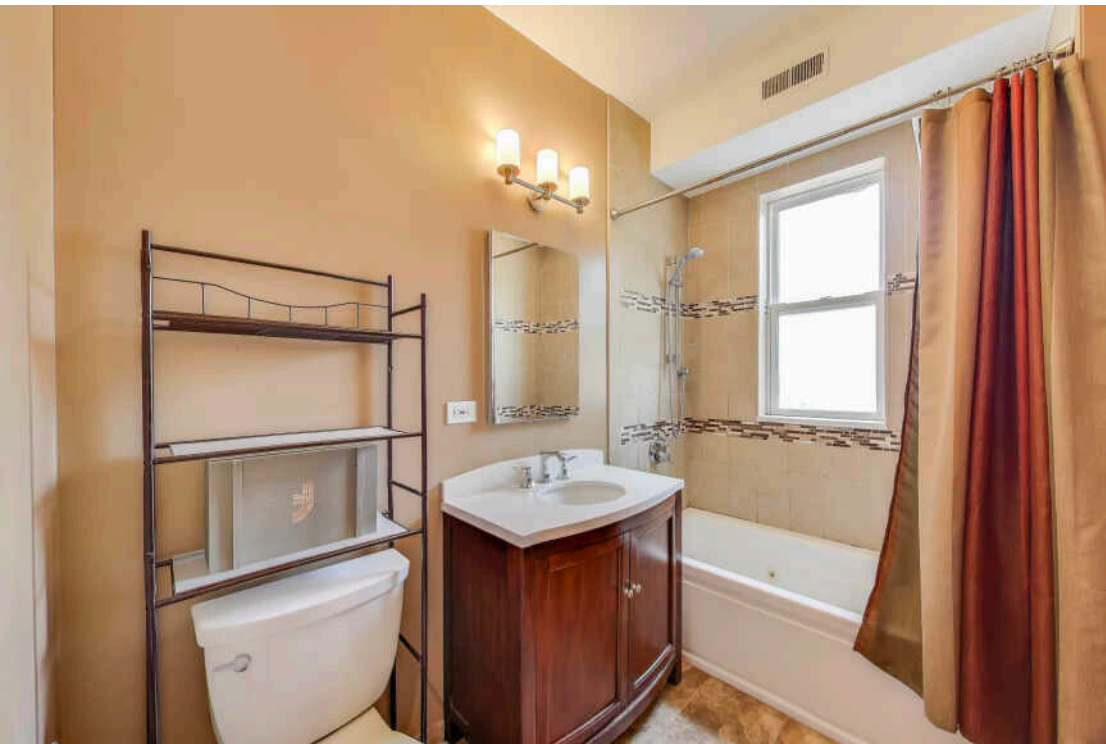
1 BEDROOM

1 BATH

TAXES: \$1,626.96 (2023 WITH HO
EXEMPTION)

ASSESSMENTS: \$266







IF VARIETY IS THE SPICE OF LIFE, **ALBANY PARK** IS ON FIRE.

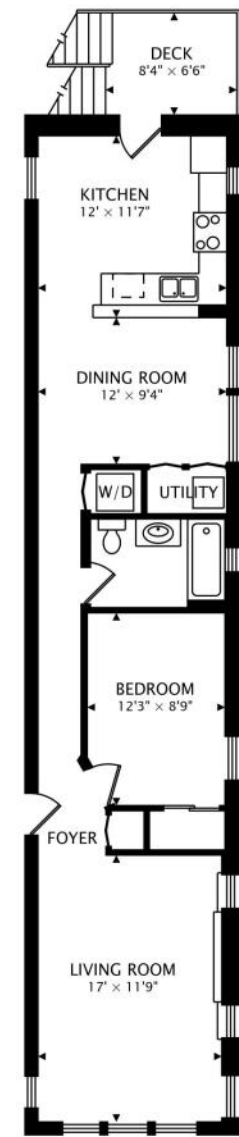
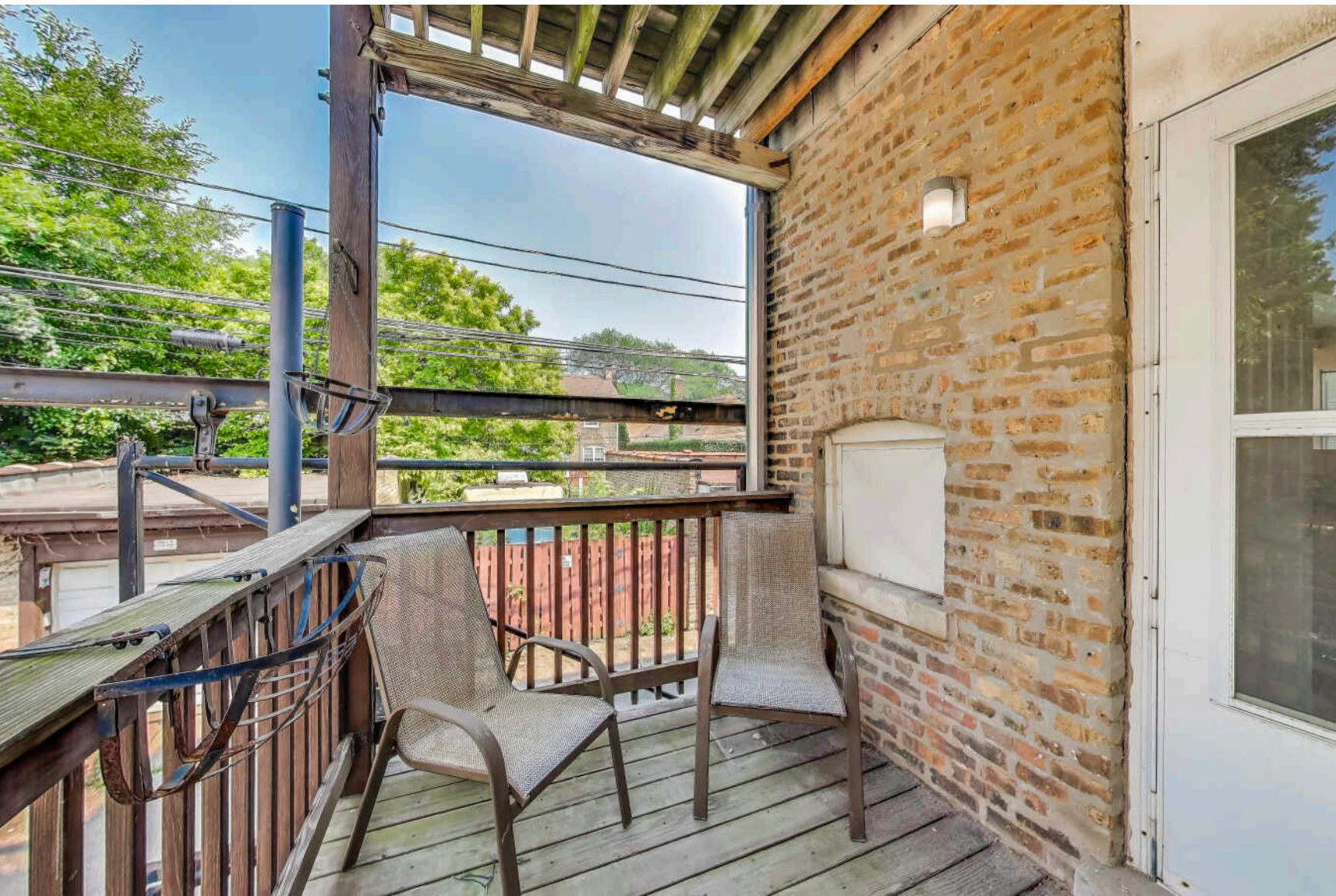
Neighbors are not strangers in this tight-knit community, where local shops and restaurants reflect the neighborhood’s eclectic vibe.

Homes include a mix of single-family homes, bungalows, brick two-flats, apartments, and duplexes. Nearby North Mayfair, which is part of the larger Albany Park community, is a mecca of historic Chicago bungalows, earning a spot on the National Register of Historic Places.

The neighborhood’s 16-acre Eugene Field park includes two bridges as well as a playground, tennis courts, athletic fields, 60-foot tall light tower, and historic Tudor Revival style brick field house. The park was named for American writer Eugene Field, who was best known for his work as a children’s poet including the classic *Little Boy Blue*.

Residents of Albany Park have even more to love with the addition of the 312 RiverRun trail that connects to nearby neighborhoods.

Whether heading downtown, to the suburbs, or to O’Hare International Airport, commuters have access to the CTA Blue Line and Brown Line, as well as the expressway.



888 sq ft + 53 sq ft DECK



AMANDA MCMILLAN

AMANDA@CHICAGOHOMEPARTNER.COM

CHICAGOHOMEPARTNER.COM

773-537-1300



All specifications, features, designs, price, assessments, taxes and materials are subject to change without notice. Depicted floor plans and architectural renderings are only an artist's impression.

