

3852 W 80TH ST
ASHBURN





ROOM DIMENSIONS

LIVING ROOM : 19' × 13'

KITCHEN/DINING : 14' × 10'

PRIMARY BEDROOM : 12' × 9'

2ND BEDROOM : 12' × 8'

3RD BEDROOM : 12' × 11'

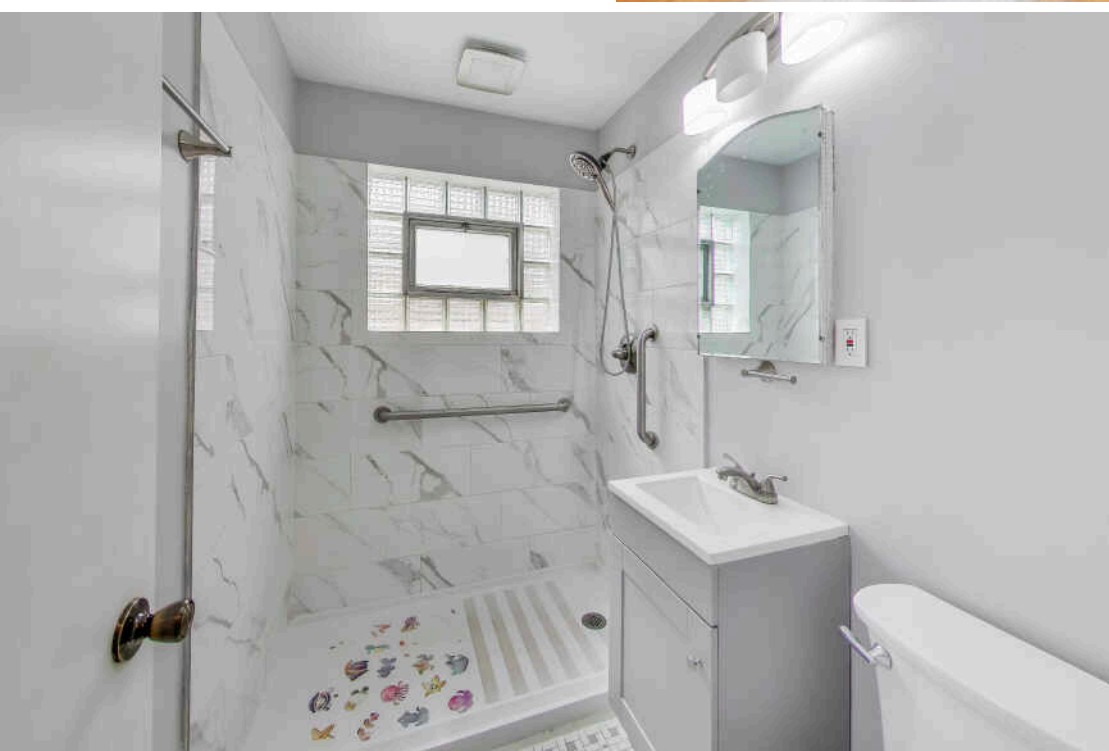
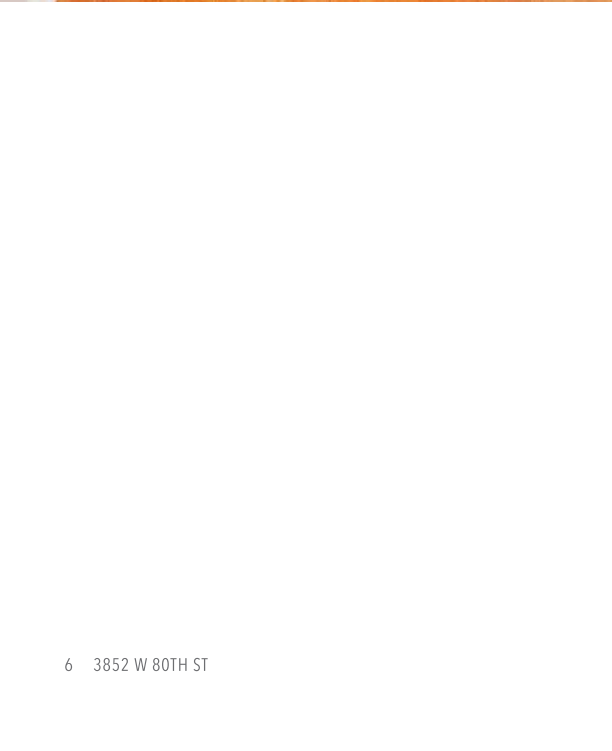
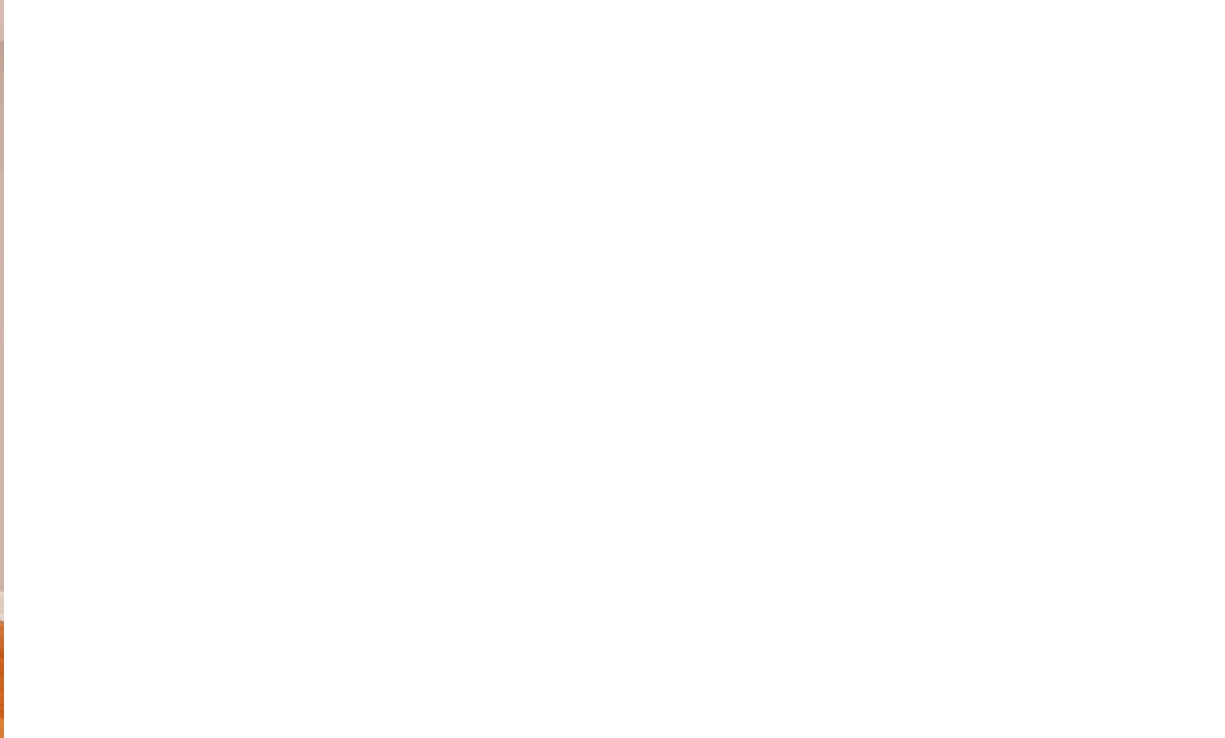
4TH BEDROOM : 12' × 9'

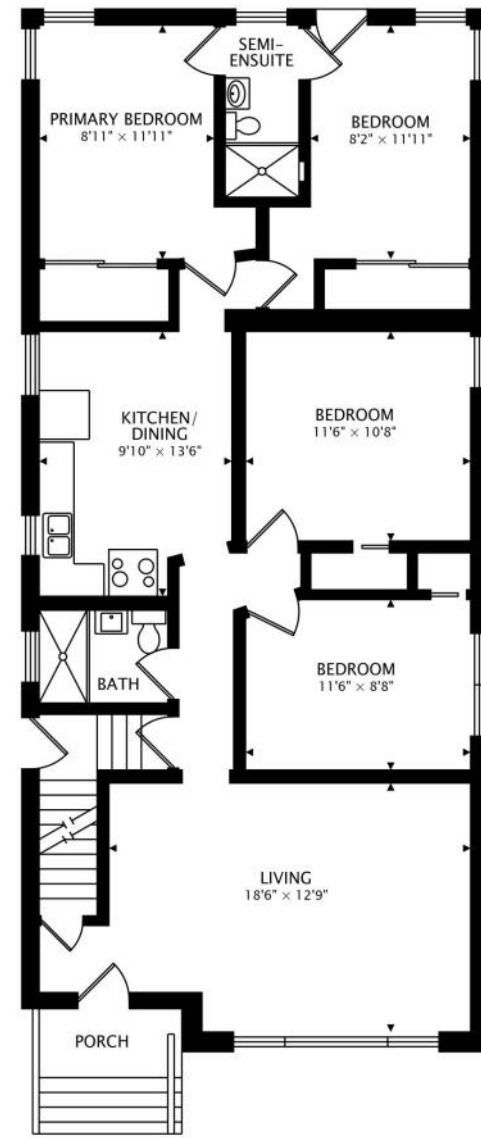
BASEMENT : 36' × 22'

MOVE-IN-READY OPPORTUNITY PACKED WITH UPDATES, EXTRA-WIDE LOT WITH A DRIVEWAY, AND INCREDIBLE VALUE-ADD POTENTIAL!

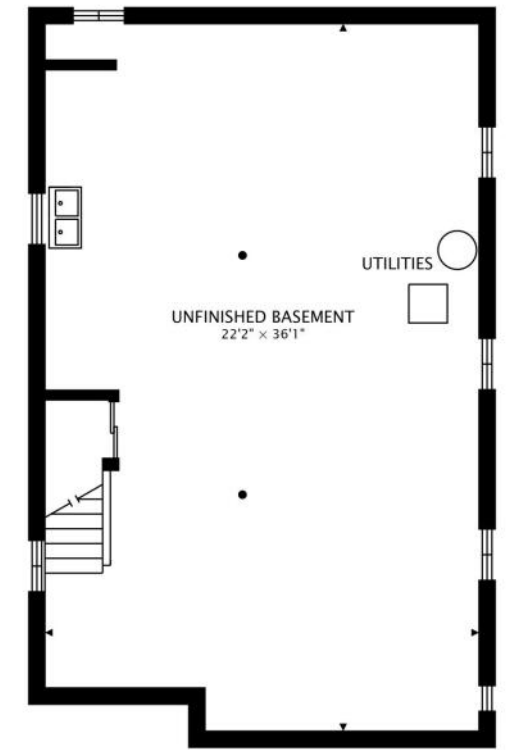
Freshly painted, this home offers a clean and inviting feel from the moment you walk in, with recent improvements including new copper plumbing, recessed lighting, new ceiling fans, remodeled bathrooms, new refrigerator, and a new sump pump already completed for the next owner. The side door allows quick access to your basement, making this extra 863 square feet of blank canvas ready for that extended family, guests, and more. Whether you're looking for a comfortable primary residence or a property with the opportunity to continue customizing and building equity over time, this home delivers flexibility and upside. This is a fantastic chance to step into a well-cared-for home with both immediate comfort and long-term potential.







MAIN
1250 sq ft



LOWER
863 sq ft BELOW GRADE



10 3852 W 80TH ST



3852 W 80TH ST 11



GERARDO GARCIA, ABR, RENE, PSA

OFFICE: (312) 254-0200

MOBILE: (773) 319-5007

GGARCIA@ATPROPERTIES.COM



CHICAGO HOME LIVING

CHICAGOHOMELIVING.COM

@properties®

CHRISTIE'S
INTERNATIONAL REAL ESTATE