

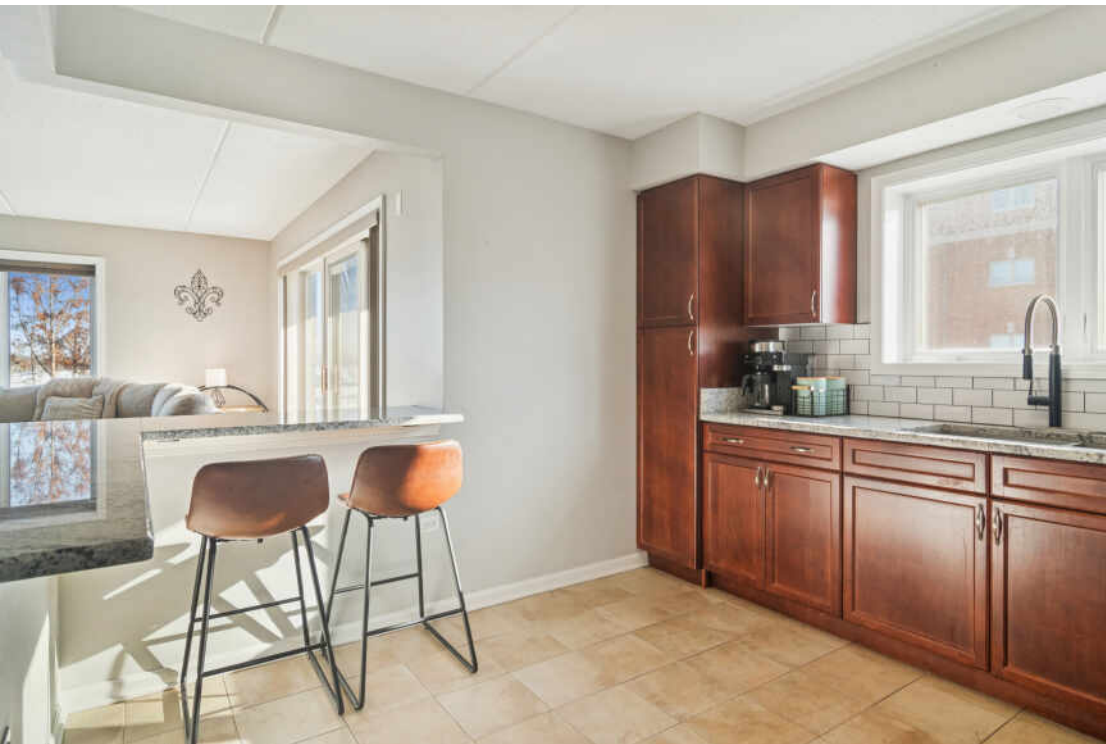
390 S WESTERN AVENUE #511
DES PLAINES



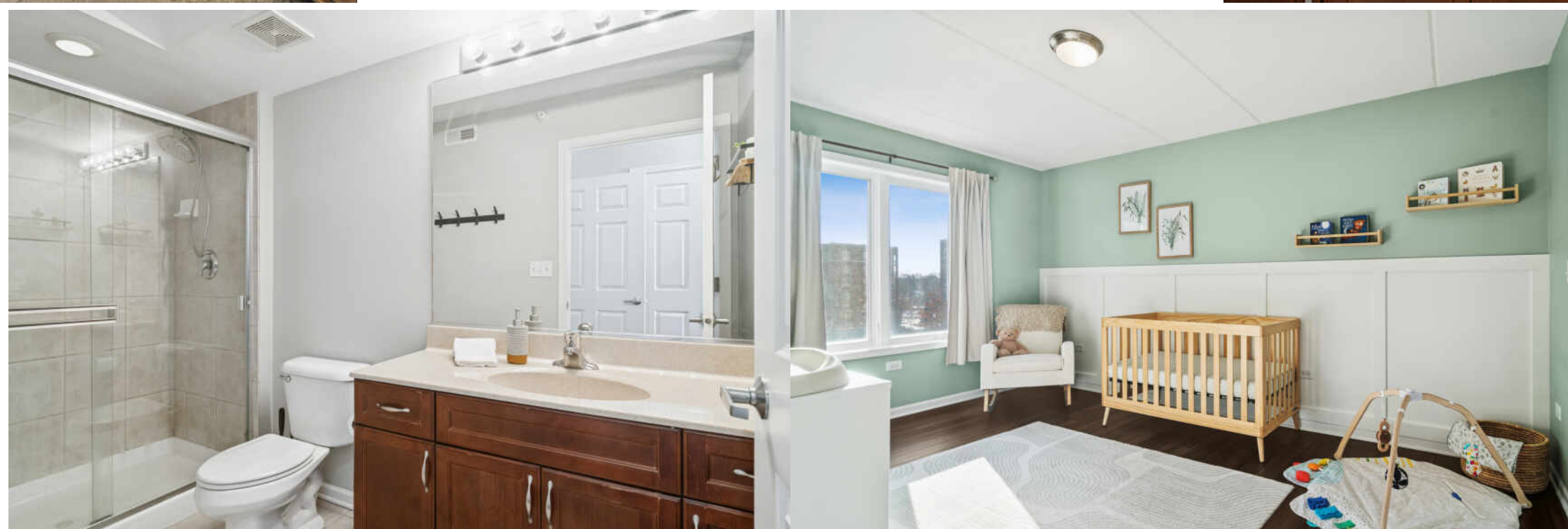


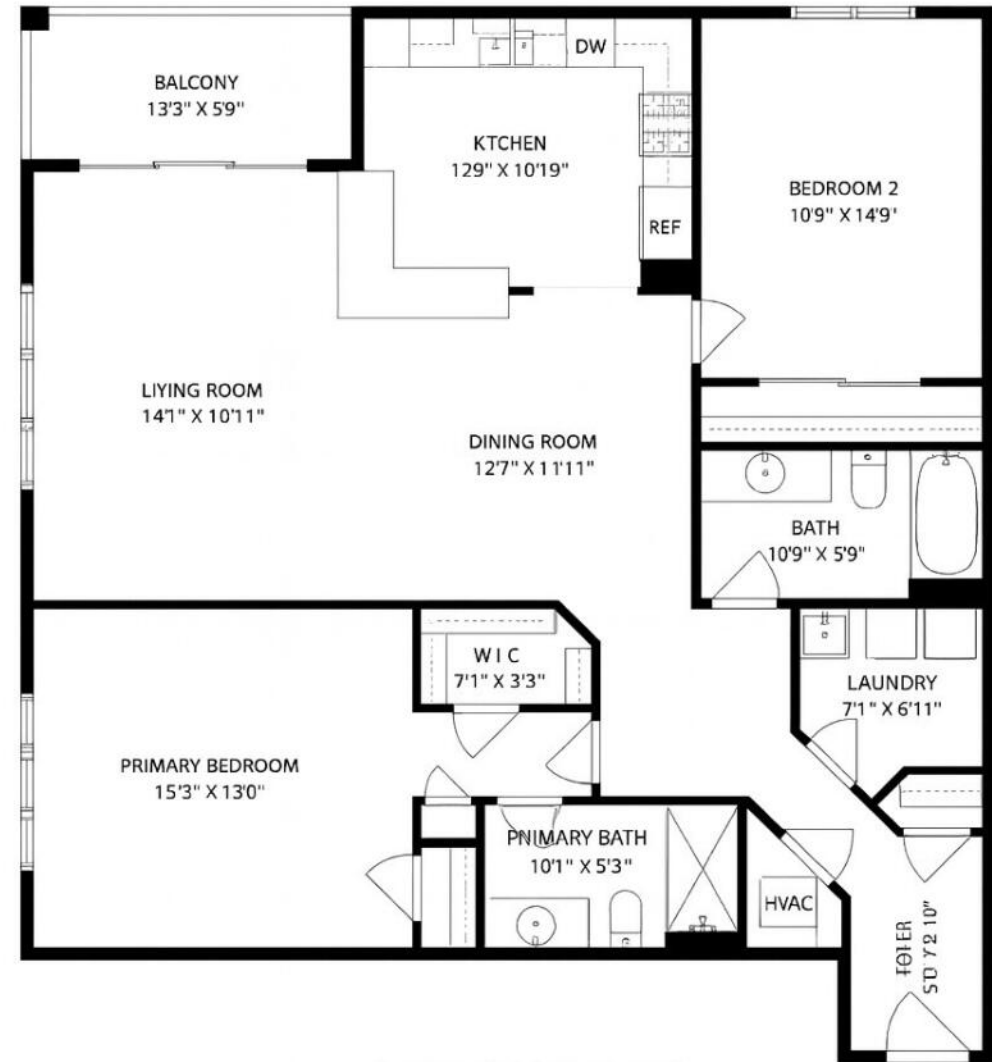
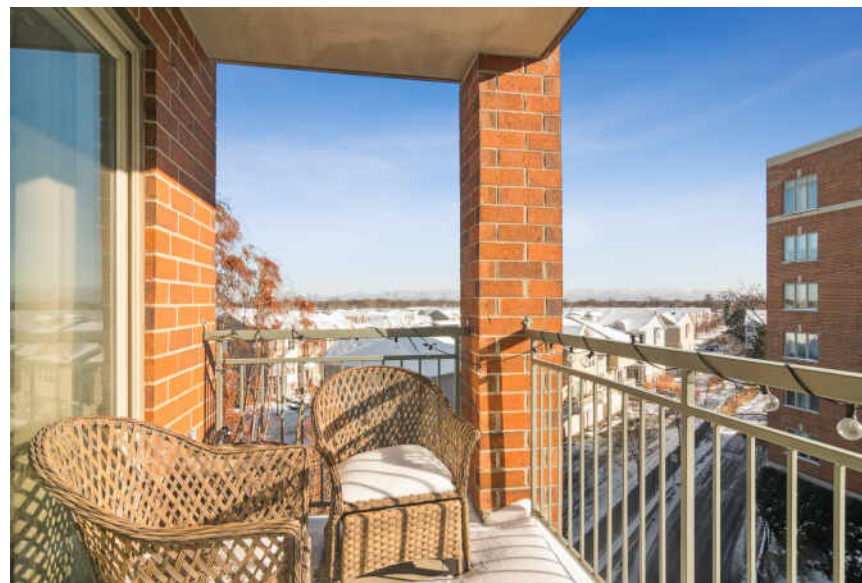
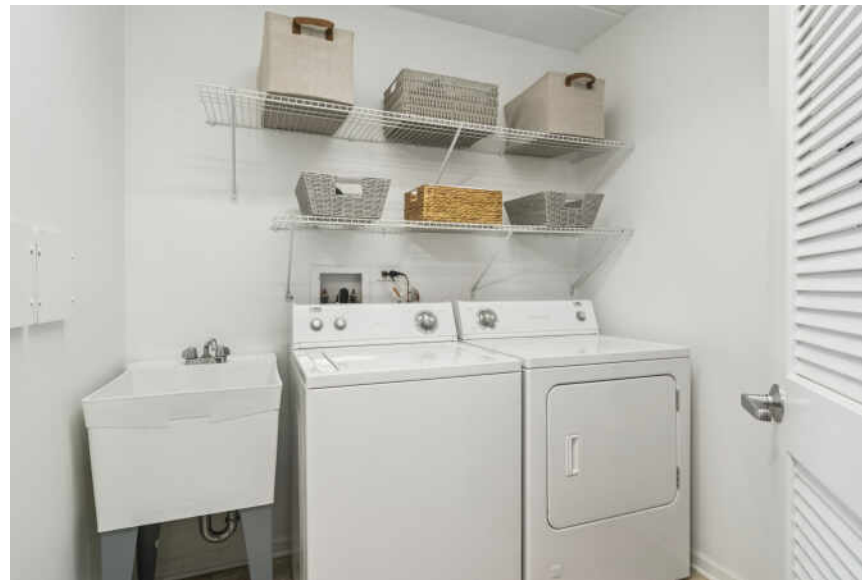
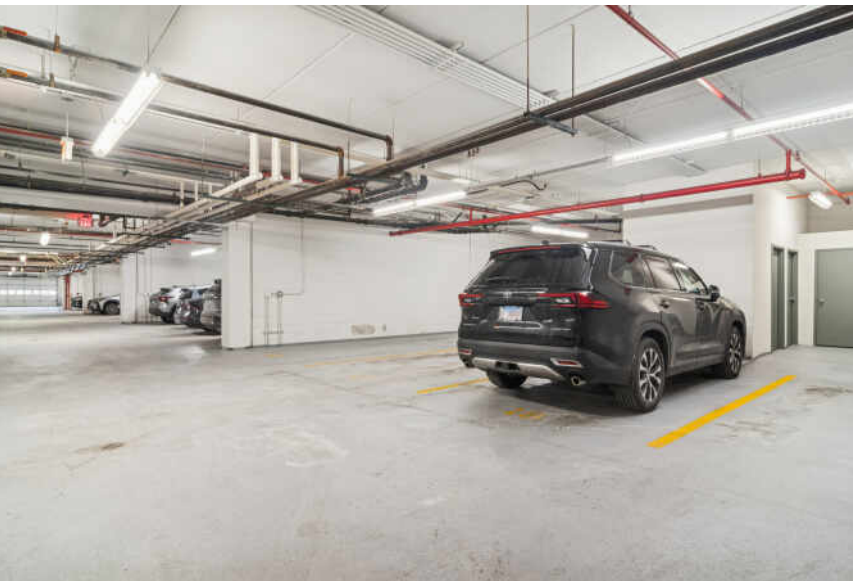
2 BEDROOM
2 BATH
TAXES: \$5,951
ASSESSMENTS: \$486 / MONTH

Rarely available corner unit with peaceful courtyard views and an exceptional open concept layout. This beautifully updated 2-bedroom, 2-bath condo offers 1,524 square feet of bright, airy living space and one of the largest floor plans in the building. Neutrally painted throughout, updated with wide plank vinyl flooring, the home features a spacious living and dining room with corner windows and easy access to the private balcony that is perfect for morning coffee or relaxing after a long day. The large kitchen includes a breakfast bar, stainless steel appliances, granite countertops, abundant cabinetry, and a new modern subway tile backsplash. The generous primary suite offers his and her closets and a private bath with a walk-in shower. The second bedroom is oversized with abundant natural light and works well for guests, a nursery, or a home office. The second full bath features neutral tile and updated finishes. Additional conveniences include a full-size in-unit laundry room with shelving for storage and a utility sink, heated indoor garage parking, a separate storage space, and plenty of guest parking. Monthly assessments include heat, cooking gas, water, cable TV, and internet for easy, low-maintenance living. This prime location is just blocks from Downtown Des Plaines, the Metra station, parks, restaurants, shopping, and coffee shops, with quick access to I-294, O'Hare, and major employment hubs. Enjoy a walkable and wonderfully convenient lifestyle. A rare opportunity not to be missed.

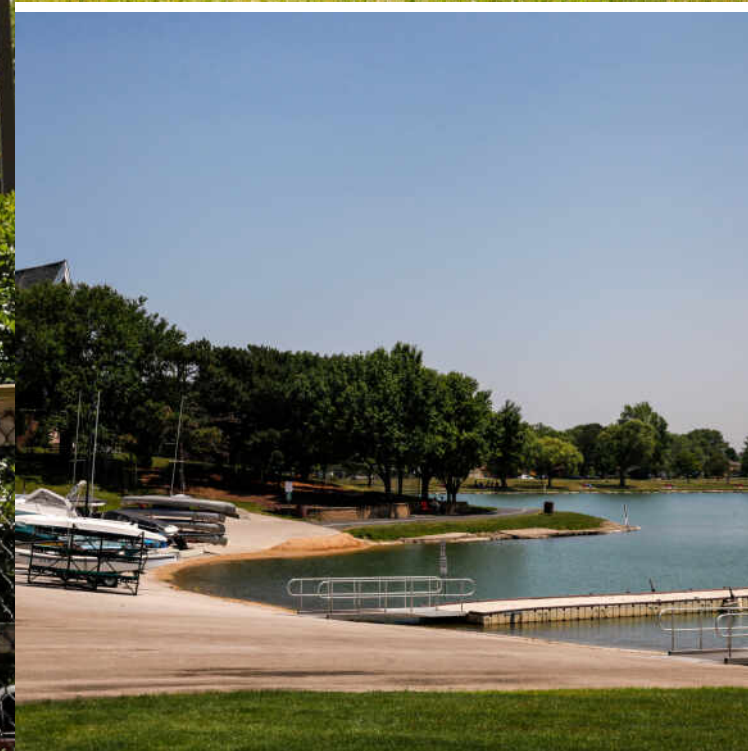








FIFTH FLOOR
390 WESTERN AVE APT. 511
DES PLAINES, IL



THERE ARE NO STRANGERS IN **DES PLAINES**, AT LEAST NOT FOR LONG.

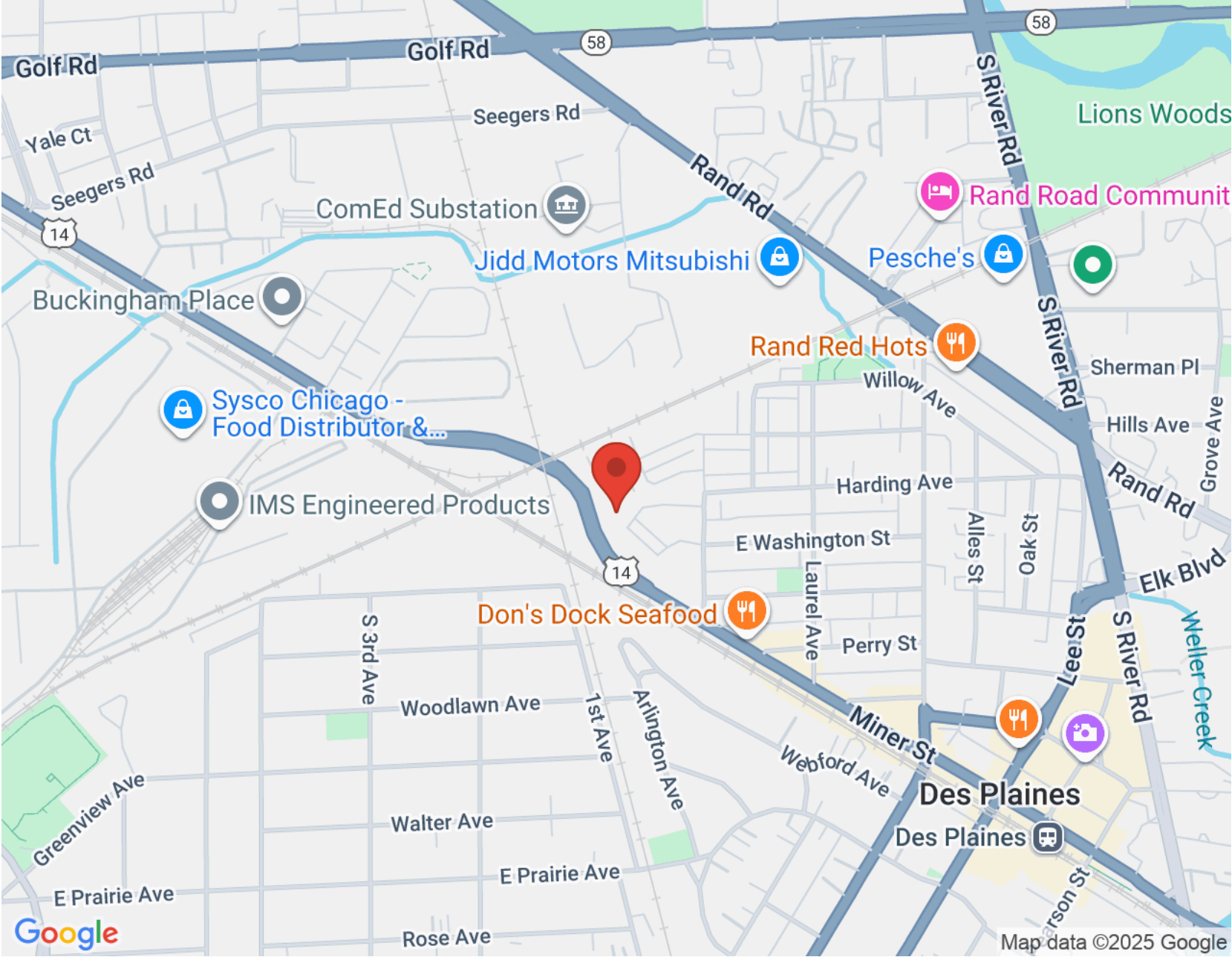
The city prides itself on being a friendly and welcoming place for newcomers as well as lifelong residents.

Located about 17 miles northwest of Chicago, near O'Hare International Airport, the city has a mix of residential, commercial, and industrial properties making it a great place to live, work, and play.

Des Plaines has several affordable and connected neighborhoods - from downtown high-rise condominiums to single-family neighborhoods.

Metropolitan Square, a mixed-use center, is a block away from the city's Metra station with convenient transportation to downtown Chicago on the Union Pacific Northwest Line. The Square includes 135 condominiums and lofts near local eateries as well as a large grocery store and more than 80,000 square feet of retail and office space.

The Des Plaines Park District offers numerous recreational facilities from water slides, swimming pools, and ice skating to 18-hole golf courses, bike trails, and boating. The city has 37 parks and more than 300 recreational programs and events.



NOTES _____



VALORIE SCHMIDT

847.624.5368

847-381-0300

VALSCHMIDT@ATPROPERTIES.COM



UNLOCK YOUR
DREAMS



All specifications, features, designs, price, assessments, taxes and materials are subject to change without notice. Depicted floor plans and architectural renderings are only an artist's impression.

