

**3910 WHITE CLOUD DRIVE**  
TIMBER RIDGE, SKOKIE





©VHT STUDIOS

#### ROOM DIMENSIONS

LIVING ROOM : 21' × 13'  
KITCHEN : 14' × 12'  
DINING ROOM : 14' × 10'  
FAMILY ROOM : 25' × 17'  
FOYER : 14' × 13'  
PRIMARY BEDROOM : 14' × 13'  
BEDROOM 2 : 14' × 13'  
BEDROOM 3 : 14' × 11'  
BEDROOM 4 : 11' × 10'  
REC RM/BASEMENT : 27' × 20'

4 BEDROOM  
2.1 BATH

## DECADES OF LOVE IN OUR HOME IN TIMBER RIDGE

Endless summers surrounded by towering trees and soft green grass, not just at our house, but the entire Timber Ridge neighborhood. We played with our friends in the big backyard, which at one time had a mini-roller coaster along the eastern fence. Our backyard was an extremely popular place to play!

Our dad would grill tasty dinners on the back patio all summer...and even sometimes in the winter. To do this, he'd shovel a little path in the snow as nothing would keep him from his beloved grilled foods.

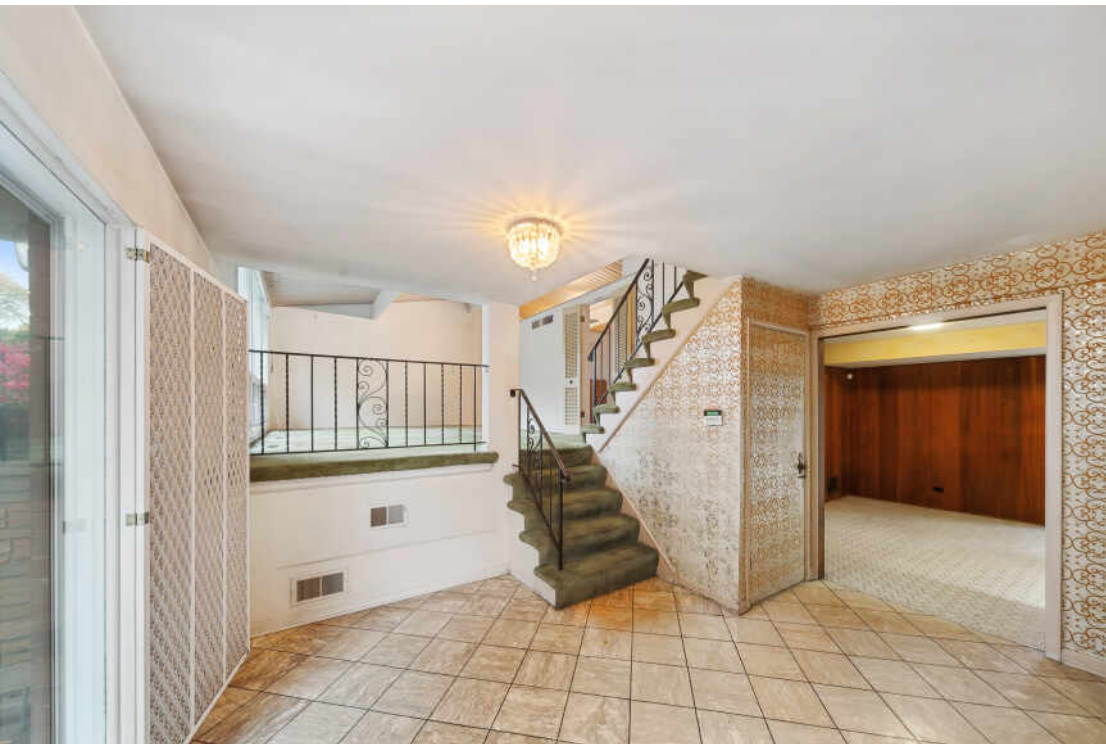
When we weren't playing outside, there was ample space in the house to have fun, whether in our bedrooms, the family room or the basement. We all enjoyed the basement full-sized pool and ping-pong tables, and Dad had ample room for his workbench with countless tools, hardware and storage. The entire house had lots of rooms with built-in organizers.

As kids, we would look up at the high ceilings and think we were living in a castle. When our parents had parties, my dad would entertain from behind the built-in bar in the family room that included a working sink.

As my brother and I got older and started to participate in activities away from home, the walk to the bus stop was a block away, which made it easy for us to get around before we started driving.

We take with us our memories of birthdays, holidays, weekends, and our everyday rituals. Our family had a wonderful life here for 63 years. We wish you the same.







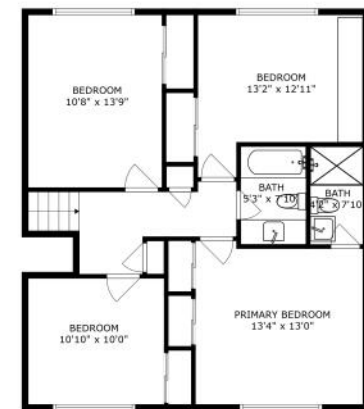
FLOOR 1



FLOOR 2



FLOOR 3



FLOOR 4

SIZES AND DIMENSIONS ARE APPROXIMATE, ACTUAL MAY VARY.





**SKOKIE IS A THRIVING COMMUNITY  
CATERING TO SUBURBAN RESIDENTS WHO  
ENJOY A MORE URBAN LIFESTYLE.**

Recognized by *Money* magazine as one of the fastest-growing suburbs in the U.S. and by Livability.com as one of the Top 100 Places to Live, Skokie’s secret is out.

Homebuyers will find a diverse collection of housing and neighborhoods close to the shops, restaurants, and grocery stores of downtown Skokie. Architectural styles include classic bungalow-style single-family homes as well as apartment buildings.

Home to one of the region’s top shopping centers, Westfield Old Orchard Mall, Skokie has numerous upscale retailers, a variety of dining options, and movie theaters. The North Shore Center for the Performing Arts and Northlight Theatre are among the community’s premier entertainment offerings that draw locals and visitors alike.

If you’re looking for fun and games, Skokie has that covered too. An award-winning park district maintains 240 acres of parkland and puts on year-round programs and events. The state-of-the-art Weber Leisure Center hosts a variety of classes and workout options for residents on the move.

Skokie commuters have convenient access to the city with CTA Yellow Line and the Edens Expressway, which is located along the neighborhood’s western edge.





## NOTES

[illegible]



## MARISSA HOPKINS, LISTING BROKER

(773) 612-8822

MARISSA@MARISSAHOPKINS.COM

MARISSAHOPKINS.COM



CHRISTIE'S  
INTERNATIONAL REAL ESTATE