

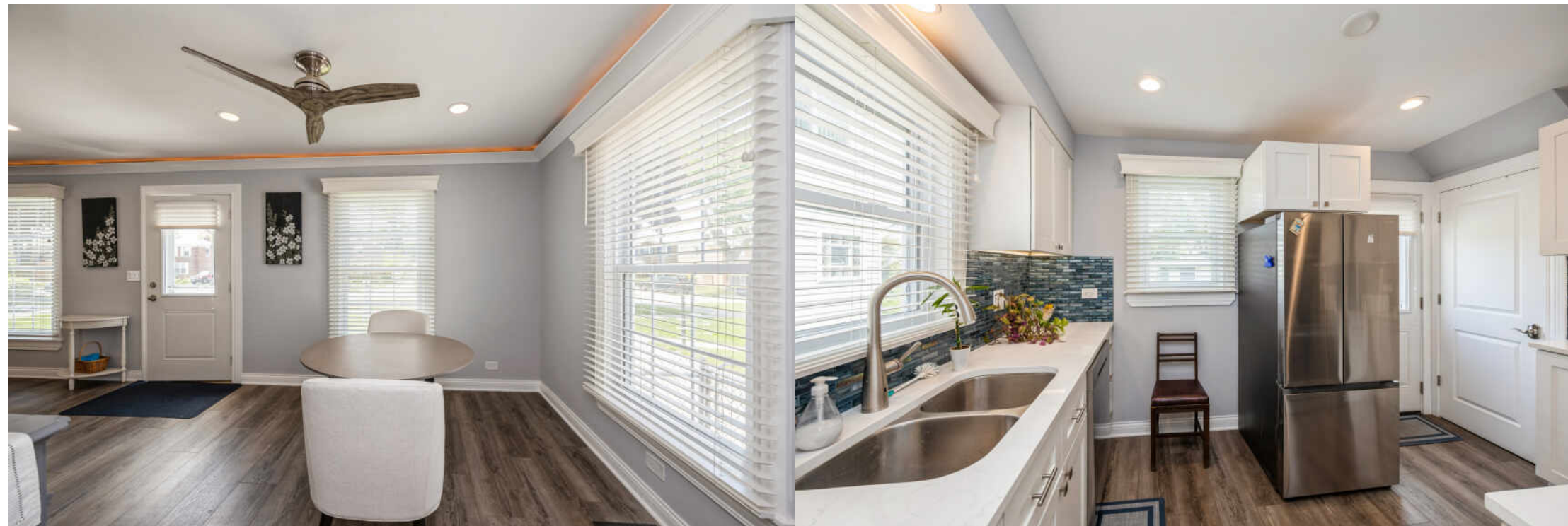
3917 HOME AVENUE
STICKNEY





From the moment you arrive, the curb appeal will draw you in. Step inside to a bright and inviting living room and dining room, both featuring stylish wood laminate flooring and on-trend colors that make this space feel like home. Elegant coved molding with integrated lighting and recessed lighting on dimmers add a warm, custom touch-no need to worry about flipping switches. The kitchen is a true standout, boasting crisp white cabinetry, a sleek backsplash, under-cabinet lighting, quartz counter tops, recessed ceiling lights, and wood laminate flooring. Step out the back door onto a lovely deck that overlooks a beautifully maintained backyard-perfect for relaxing or entertaining. Upstairs, you'll find a thoughtfully updated full bathroom with marble tile in the tub/shower area, a modern vanity, and a newer toilet. The primary bedroom features a ceiling fan, wood laminate flooring, and a custom closet organizer. No need to haul laundry downstairs-the hallway includes a convenient laundry nook with a stackable washer and dryer. The second bedroom also features wood laminate flooring and a closet with organizer, and the entire first and second floors are fitted with newer blinds for a clean, finished look. Downstairs, the finished basement offers wood laminate flooring, an additional washer and dryer, and a versatile utility area-ideal for a workout space, hobby zone, or extra storage. The spacious 2.5-car garage (garage is longer than a normal size garage) includes a patio door facing the backyard, adding even more functionality. Recent updates include new drywall, plumbing, electrical, coved molding, lighting, windows (Feldco double pane) doors, all new blown-in attic. There's truly nothing to do but move in and enjoy. Don't miss this one-it's a must-see!

2 BEDROOM
1 BATH









NOTES



PAT JICHA

(708) 651-0150

PATRICIAJICHA@ATPROPERTIES.COM



All specifications, features, designs, price, assessments, taxes and materials are subject to change without notice. Depicted floor plans and architectural renderings are only an artist's impression.

