

# 3943 LAKEVIEW COURT

KILDEER





6 BEDROOM  
5.1 BATH

## ELEGANT LIVING IN BEAVER CREEK ESTATES

Set on 1.5 scenic acres, this expansive estate blends timeless farmhouse charm with modern luxury. With over 8,000 square feet of finished living space, the home offers 6 bedrooms, 5.5 baths, hardwood floors throughout, and versatile areas ideal for contemporary living.

The main level features a chef's kitchen with double ovens, a 6-burner gas cooktop, two dishwasher drawers, a walk-in pantry, and updated cabinetry. Additional highlights include a formal dining room, private office, cozy family room with fireplace, a main-level en-suite bedroom with full bath, and a laundry room.

The attached guest wing, accessible from the main house or through its private entry with a wrap-around front porch, includes a kitchen, bedroom, full bath, and living area, plus finished space upstairs—perfect for additional bedrooms, an office, or a playroom.

The primary suite in the main house boasts a spa-like bath with soaking tub, dual vanities, oversized shower, two walk-in closets, and a bonus room. Two additional bedrooms, a hall bath, and a second laundry room complete the upper level.

The finished lower level spans more than 2,500 square feet and offers a large recreation room, bedroom, full bath, and abundant storage.

Outdoor amenities include a paver patio, fire pit, lake views, and a 3-car garage. A truly special home in sought-after Beaver Creek Estates.

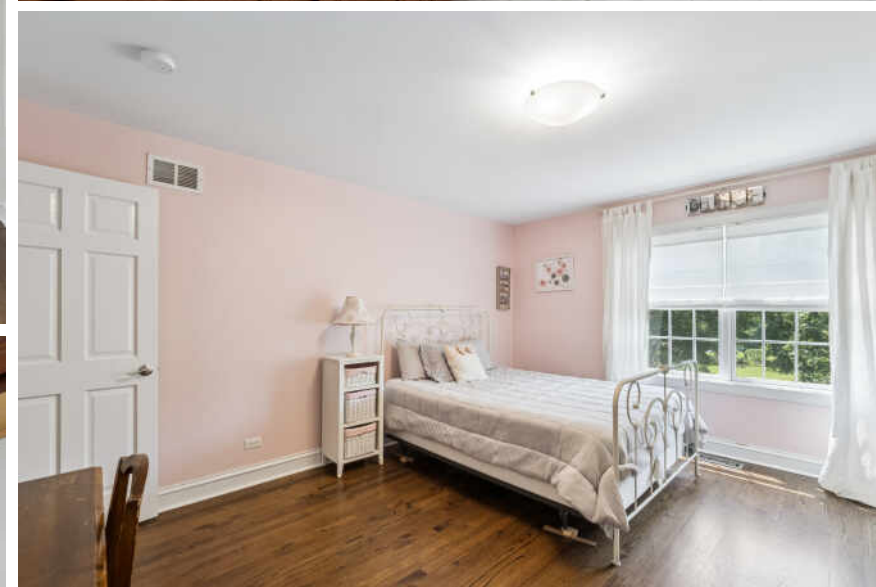
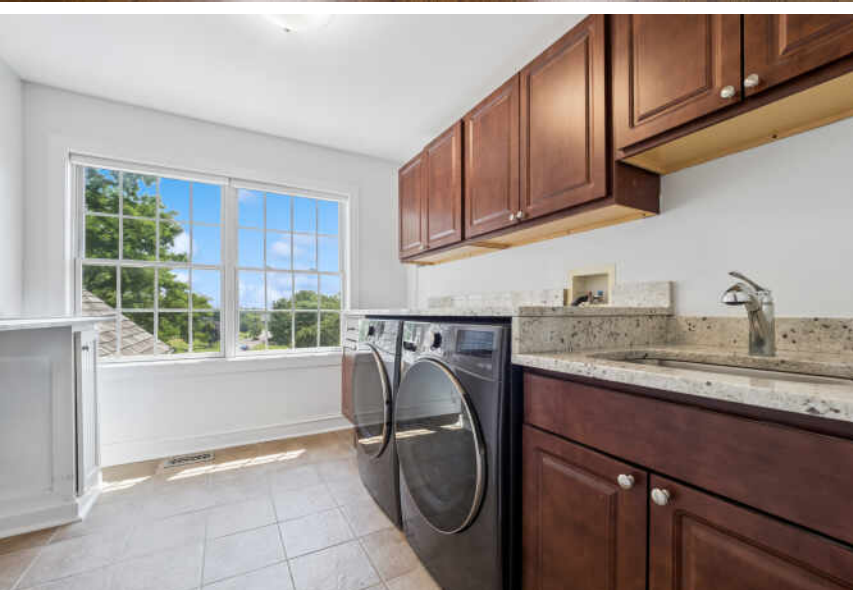
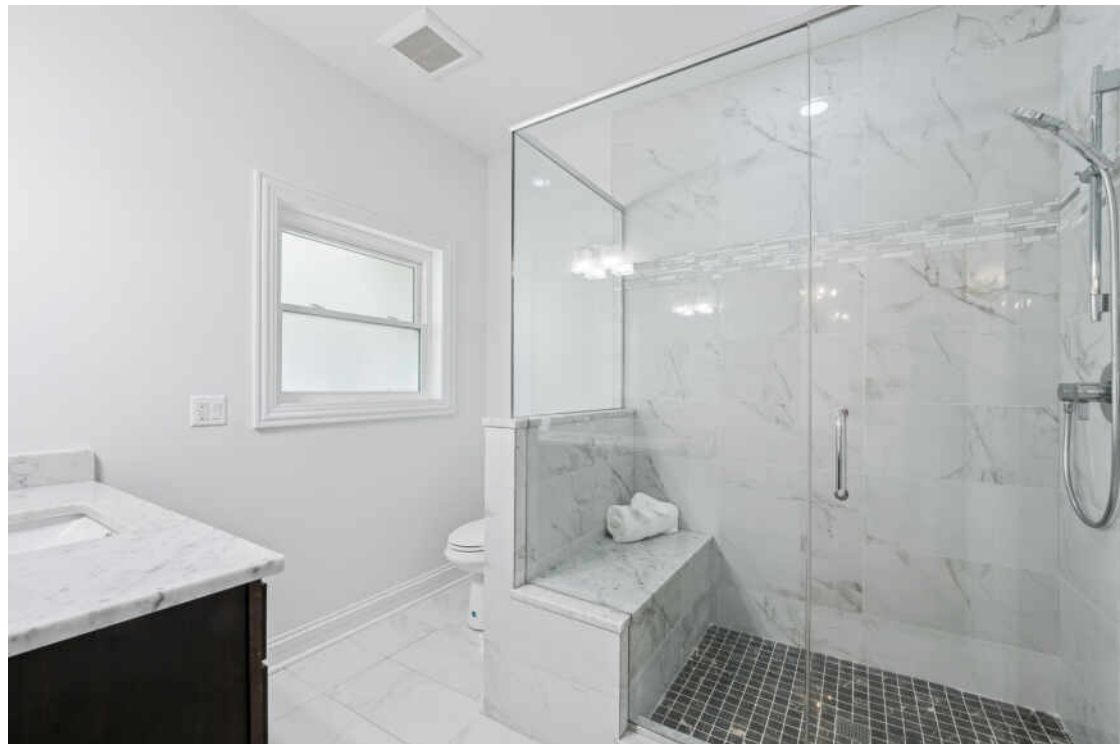
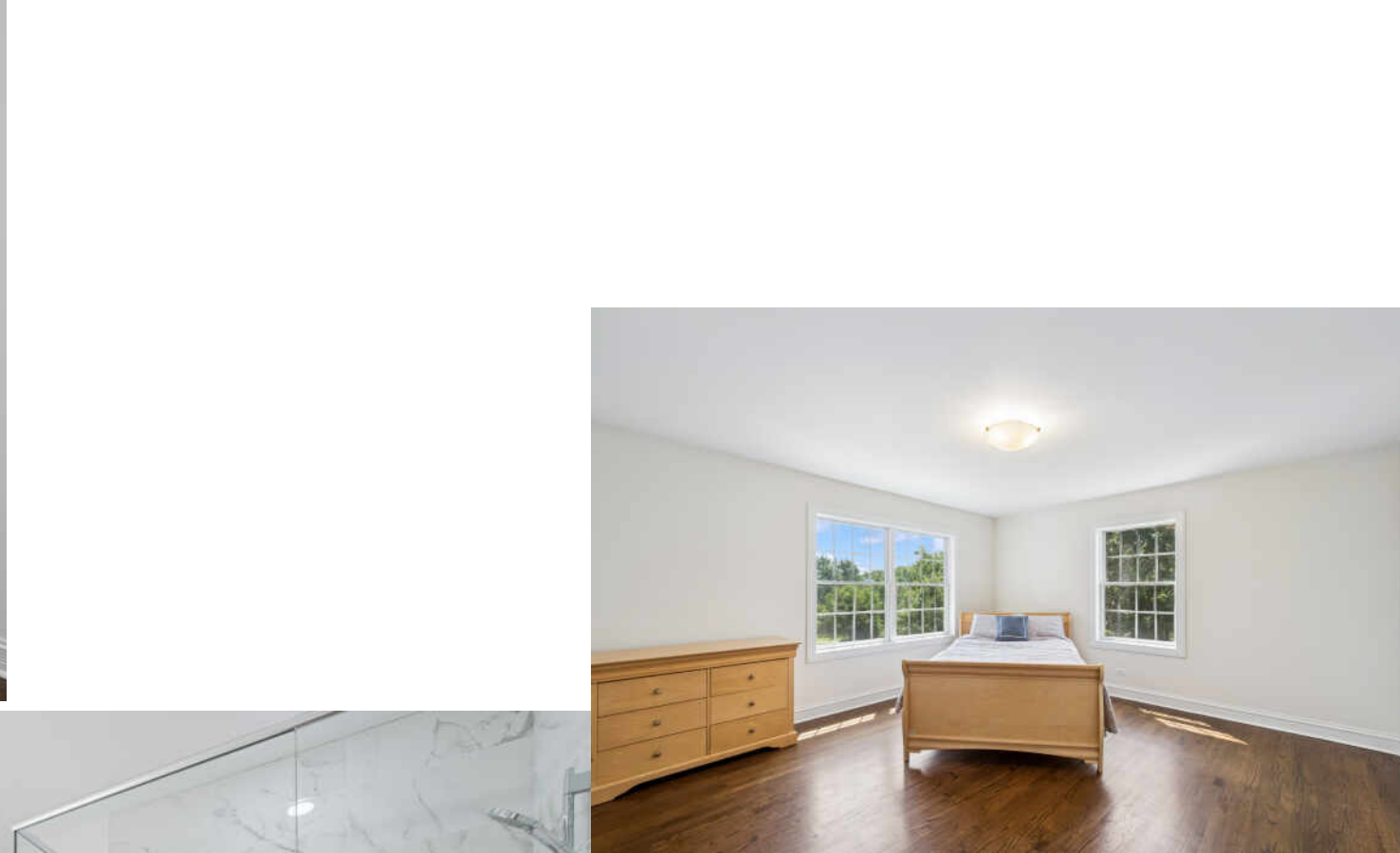


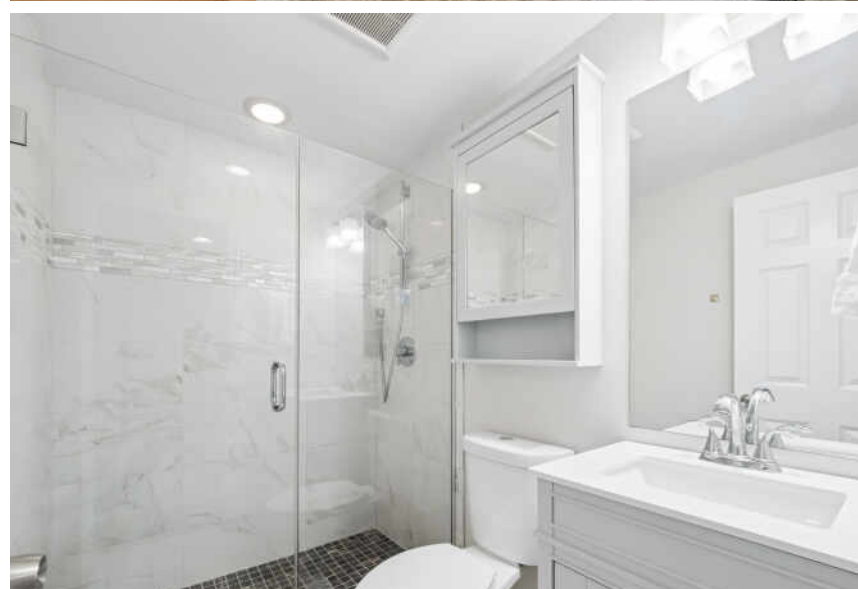
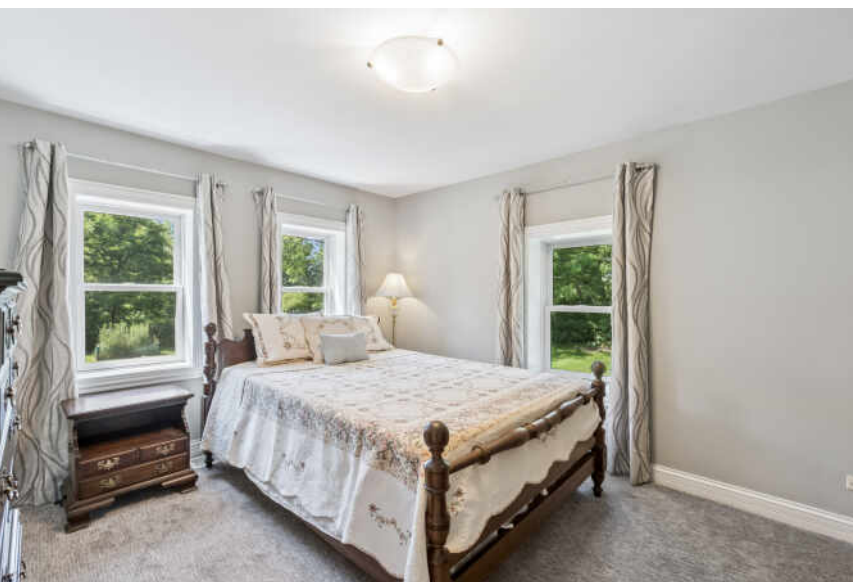




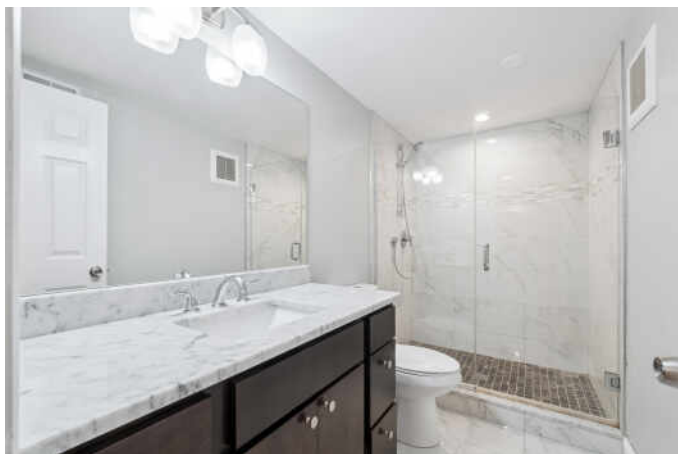
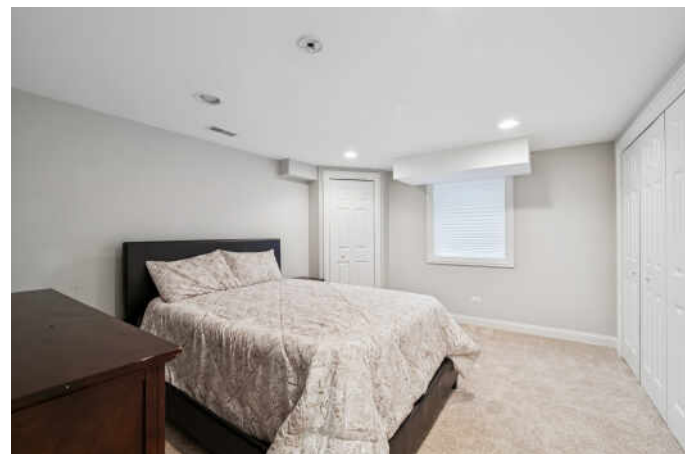












[illegible]





## VALORIE SCHMIDT

847.624.5368

847-381-0300

VALSCHMIDT@ATPROPERTIES.COM



UNLOCK YOUR  
DREAMS



All specifications, features, designs, price, assessments, taxes and materials are subject to change without notice. Depicted floor plans and architectural renderings are only an artist's impression.

