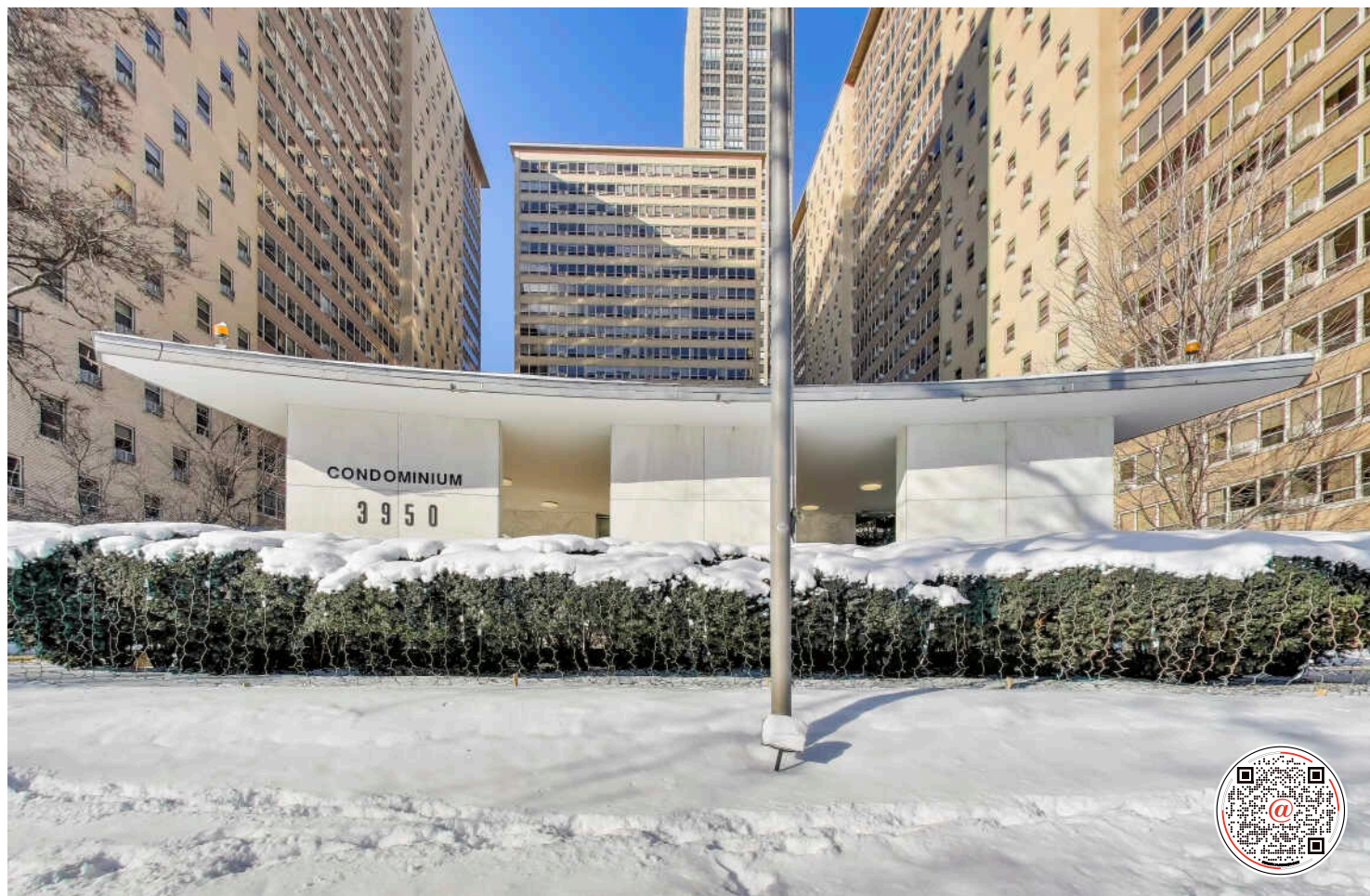


3950 N LAKE SHORE DRIVE UNIT 1130

LAKEVIEW





ROOM DIMENSIONS

LIVING ROOM : 19' × 14'

KITCHEN : 10' × 9'

PRIMARY BEDROOM : 14' × 11'

SECOND BEDROOM : 11' × 11'

2 BEDROOM

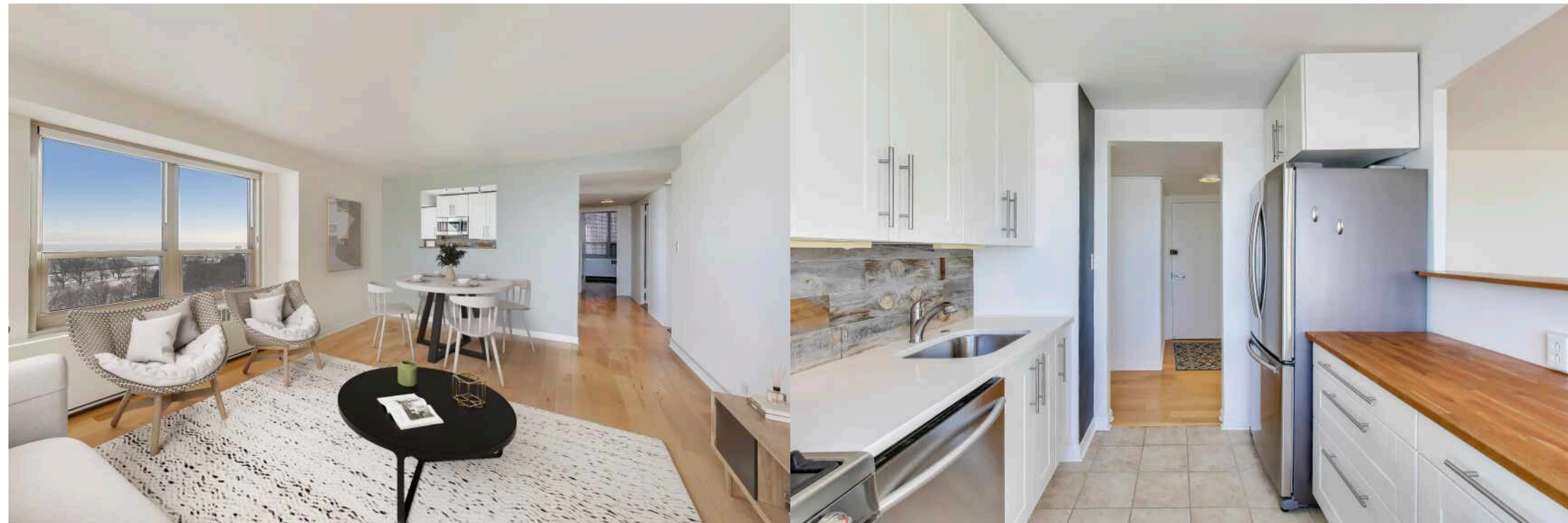
1 BATH

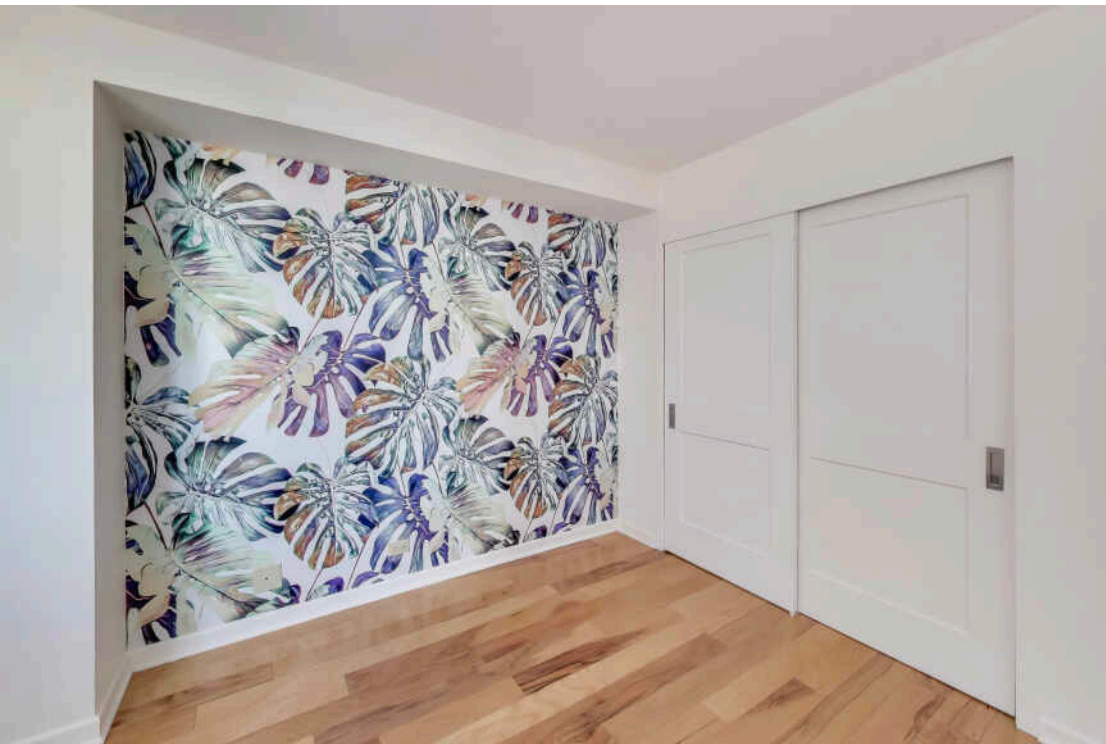
TAXES: \$3,280

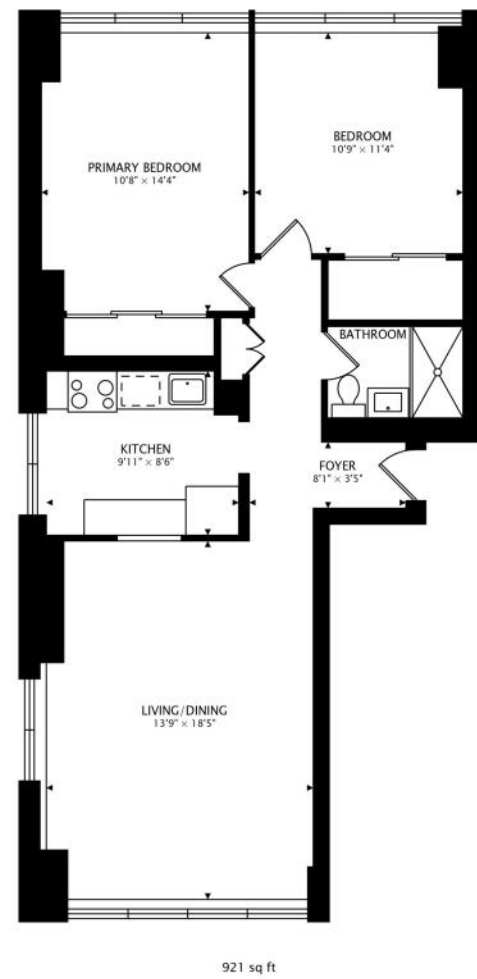
ASSESSMENTS: \$981 / MONTH

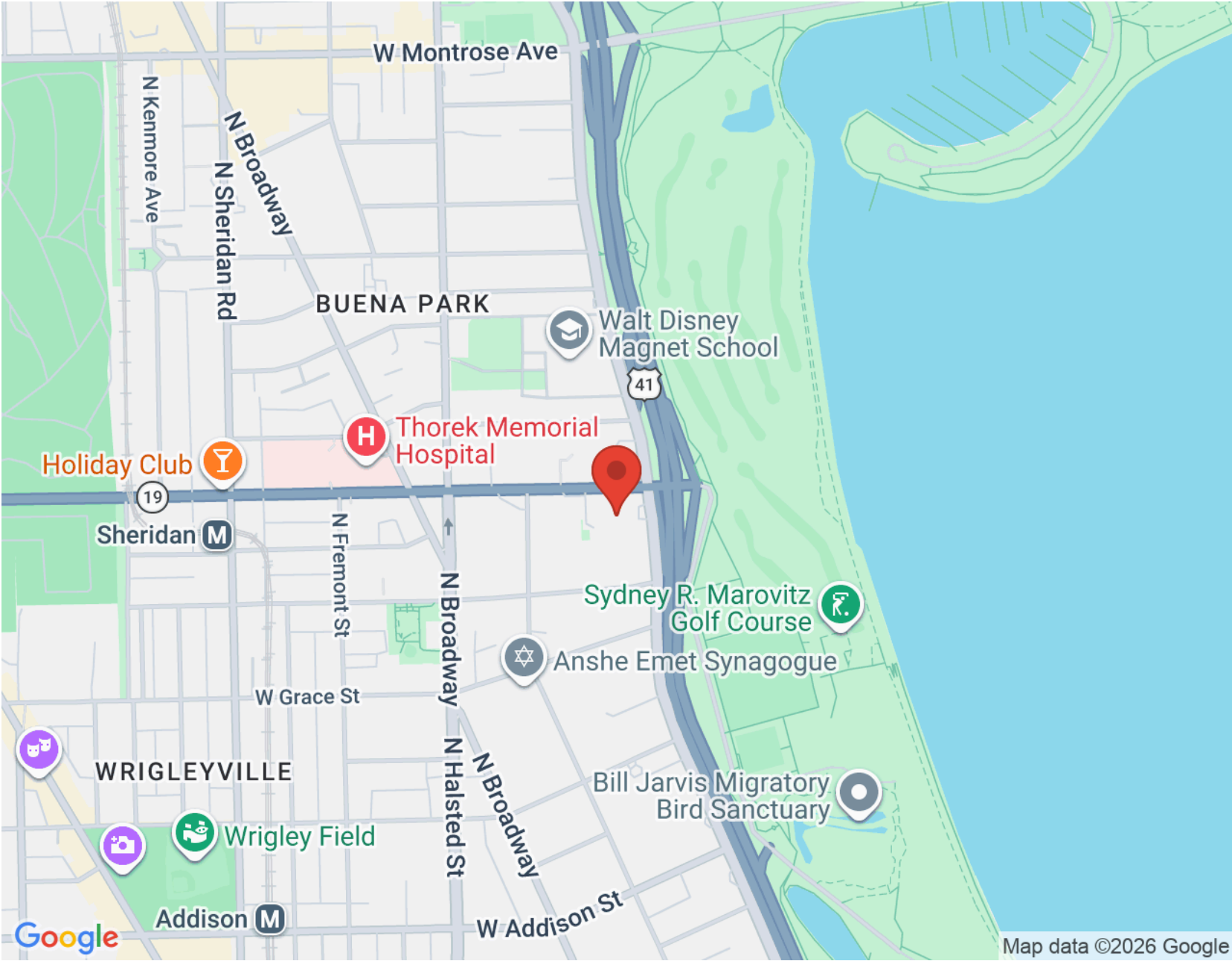
CORNER 2BEDROOM WITH UNOBSTRUCTED VIEWS OF LAKE AND CITY

Accessible lakefront living with style and Unobstructed views of Lake Michigan. See the city skyline from this rarely available front-facing corner two-bedroom condo in a premier tier. With North, South AND East-facing windows, this bright corner unit offers a flexible floorplan with generous living space, large bedrooms, and abundant closet storage. The unit is move-in ready with modern finishes and Engineered wood flooring throughout. The galley kitchen has been updated with white, soft-close cabinetry, quartzite countertops, and hardware, plus new stainless steel appliances, plenty of countertop space to prep. The primary bedroom is king size with a the huge closet with California Closets built-in shelving and sliders to maximize space. The second bedroom is similarly generous with a deep closet. Bathroom has updated plumbing and high-end fixtures with walk-in shower, two medicine cabinets and efficient vanity storage. The professionally managed, full-amenity building includes 24-hour door staff, on-site engineer, exercise room, gated garden pergola, multiple seating areas, fire pits, gas grills, dog run, a renovated rooftop deck, valet parking and Commissary. Investors welcome! Assessments cover everything - including all utilities, gas, heat, water, electric, high speed internet, Cable and storage cage. Public transportation, including express buses downtown, is conveniently located at the front door. Close to Montrose Beach and Harbor, lakefront trails, Wrigley Field, Whole Foods, Jewel, and dining, shopping, and entertainment options throughout Lakeview and Wrigleyville.











ERIN MCSHEA

548 W WEBSTER

CHICAGO, IL 60614

(312) 404-9627

EMCSHEA@ATPROPERTIES.COM



JEANINE MCSHEA

548 W WEBSTER

CHICAGO, IL 60614

(312) 446-9957

JMCSHEA@ATPROPERTIES.COM



CHRISTIE'S
INTERNATIONAL REAL ESTATE