

39 E RUSTIC LANE
ROUND LAKE BEACH





ROOM DIMENSIONS

LIVING ROOM : 22' × 15'

FAMILY ROOM : 15' × 12'

KITCHEN : 18' × 12'

PRIMARY BEDROOM : 16' × 12'

SECOND BEDROOM : 12' × 10'

THIRD BEDROOM : 10' × 10'

3 BEDROOM

2.5 BATH

TAXES: \$5,772

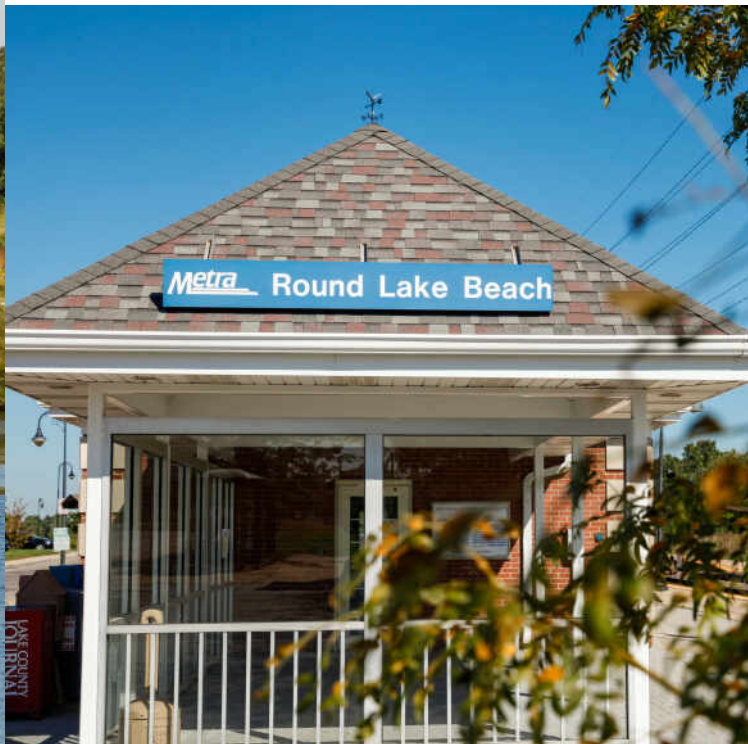
ASSESSMENTS: \$0

****WELCOME HOME TO THE LARGEST DUPLEX
MODEL IN COUNTRY WALK ** NO HOA
ASSOCIATION FEES HERE ****

Walk to neighborhood parks, shopping, movie theater, post office, and plenty of restaurants. You will love the open floor plan with vaulted ceilings for a bright sunny home. Kitchen with a center island, SS appliances, and lots of countertop space. The master suite has a walk-in closet and private bath. Enjoy your own private backyard with a patio. This home feels like a single-family home, with no shared walls between units, except for the storage area in the garage. Come take a look!







THE QUOTE “BUILD IT AND THEY WILL COME” IS NOT JUST THE STUFF OF MOVIE LEGENDS. IT HOLDS TRUE FOR THE VILLAGE OF **ROUND LAKE BEACH**.

The village started to take shape when a real estate developer built affordable homes and families started moving farther outside the city.

Located about 50 miles from downtown Chicago, Round Lake Beach is situated along its namesake lake. The village’s Lake Shore Park includes a beach, boat launch, and two playgrounds.

Residents here also enjoy several neighborhood parks, a variety of recreational programs, a sports center, and a public 18-hole golf course.

The community has a train station on Metra’s North Central Line providing convenient transportation to Chicago’s Loop.



10 39 E RUSTIC LANE

39 E RUSTIC LANE 1



DOMENICA KOCH

847.736.9343

847-367-0500

DOMENICAKOCH@ATPROPERTIES.COM



CHRISTIE'S
INTERNATIONAL REAL ESTATE

39ERUSTIC.INFO