

35400 WHEELER CIRCLE WARRENVILLE

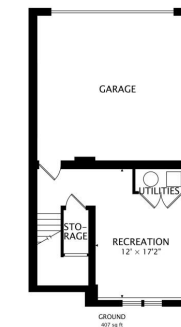
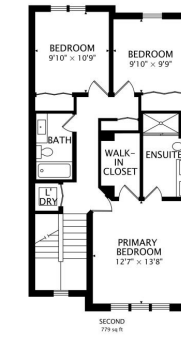
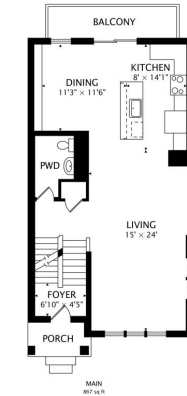
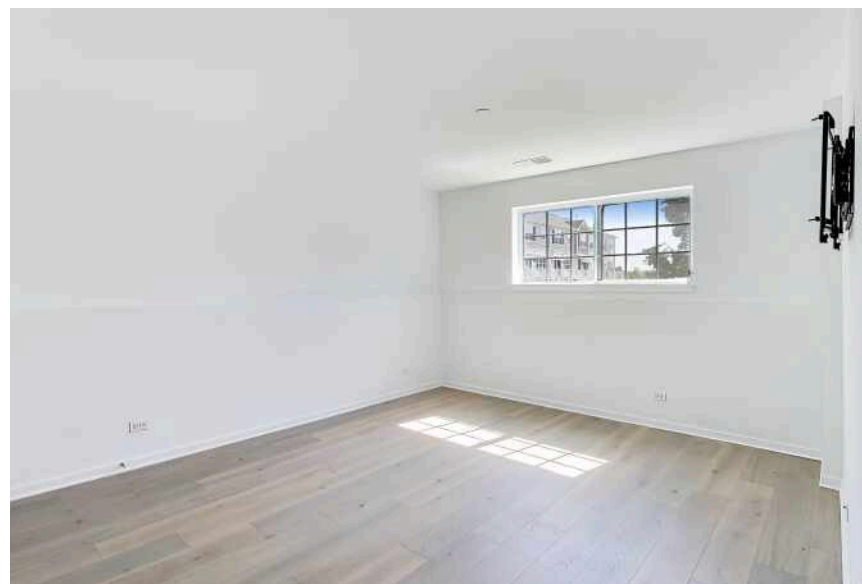
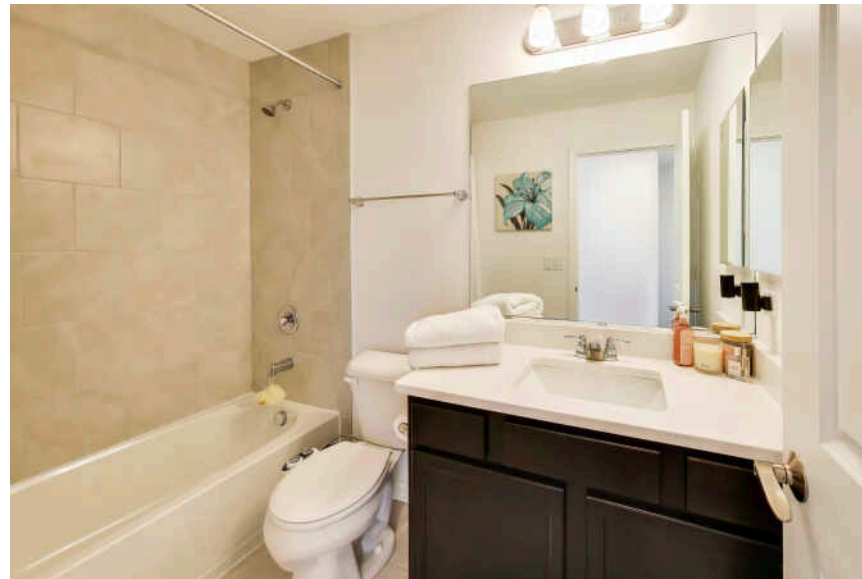




3 BEDROOM
2.1 BATH
TAXES: \$9,872
ASSESSMENTS: \$235 / MONTH

BUILT IN 2023, THIS STUNNING CORNER-UNIT COVENTRY TOWNHOME OFFERS 3 BEDROOMS, 2.1 BATHS, AND OVER 2,053 SQ. FT. OF BRIGHT, UPGRADED LIVING SPACE. ENJOY AN OPEN-CONCEPT LAYOUT WITH EXTRA WINDOWS, A DESIGNER KITCHEN FEATURING QUARTZ COUNTERTOPS, A WATERFALL ISLAND, 42" CABINETS, STAINLESS STEEL APPLIANCES, AND A PRIVATE BALCONY. HARDWOOD FLOORS, CUSTOM REMOTE-CONTROLLED BLINDS, DESIGNER LIGHTING, BUILT-IN DINING ROOM CABINETS, AND A VERSATILE LOWER-LEVEL FLEX ROOM ADD STYLE AND FUNCTIONALITY. THE SPACIOUS PRIMARY SUITE FEATURES A WALK-IN CLOSET, DUAL VANITIES, AND AN OVERSIZED SHOWER. INCLUDES SECOND-FLOOR LAUNDRY, AN ATTACHED 2-CAR GARAGE.







WELCOME TO **WARRENVILLE**, THE CITY THAT JULIUS WARREN BUILT AFTER HIS FAMILY BLAZED A TRAIL WEST FROM NEW YORK AND SETTLED ALONG THE DUPAGE RIVER.

Known for its scenic landscape, Warrenville offers numerous recreational opportunities from fishing and canoeing to hiking and cross-country skiing. The community, surrounded by five forest preserves and the Fermi National Laboratory, has more than 10,000 acres of open space and 30 miles of bike paths.

The Ferry Creek Wetland Restoration at Summerlakes Park features six acres of open land for water conservation and wildlife. The community also enjoys entertainment at the Acorn Community Theater, which features large-scale summer musicals.

Located within the Illinois Technology and Research Corridor, Warrenville is home to several corporate headquarters. The community is accessible via the Ronald Reagan Memorial Tollway and Metra, which has a station just south in Naperville.



FLYURA KUCHIYEVA

1 4849346520

6306340700

FKUCHIYEVA@ATPROPERTIES.COM

LOVE WHERE YOU LIVE