

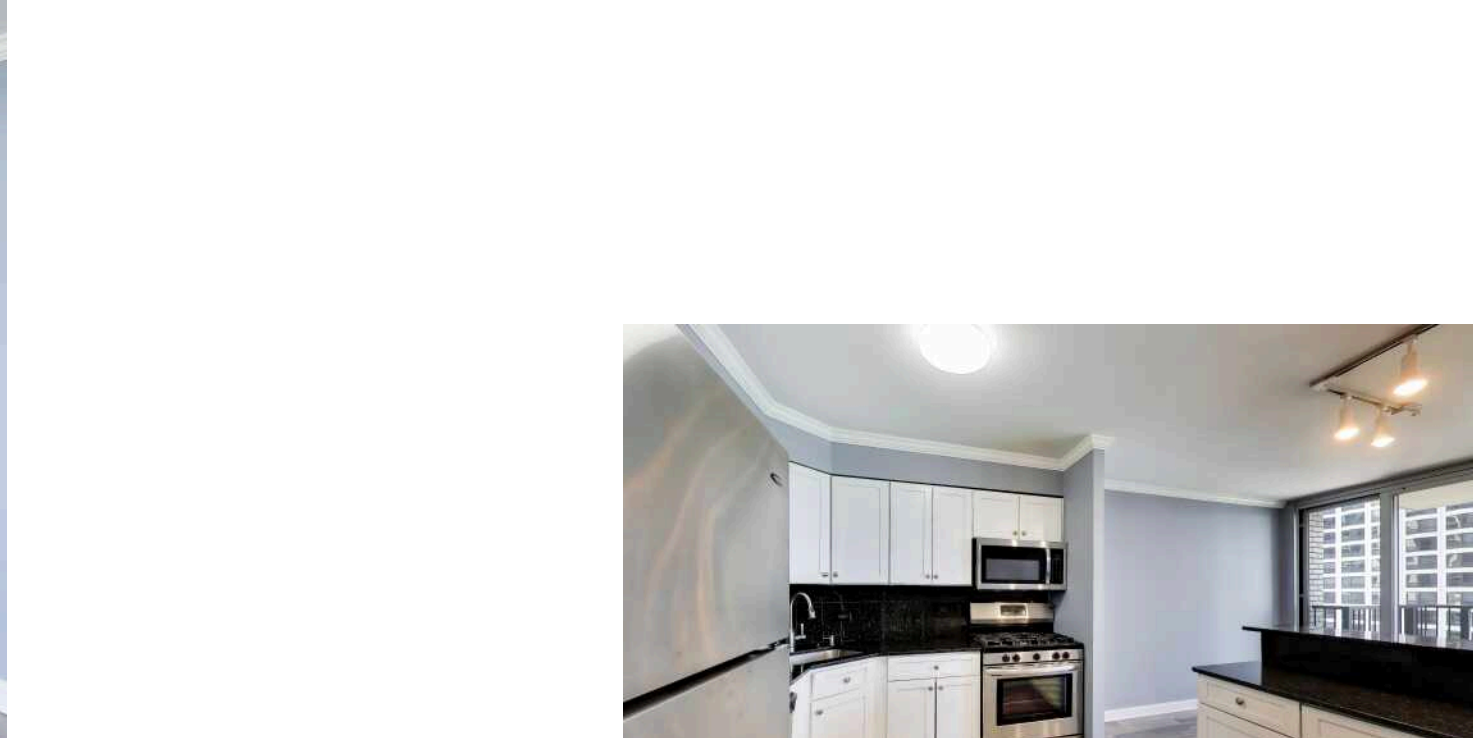
400 E RANDOLPH STREET #1727  
NEW EAST SIDE

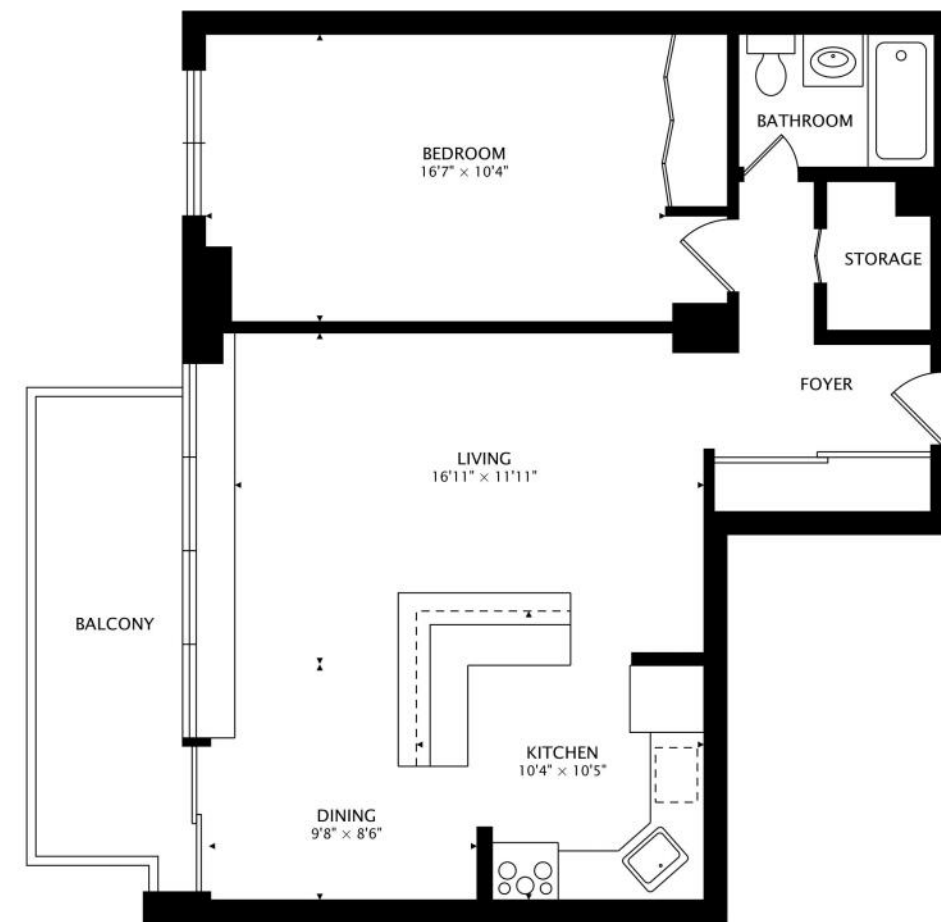
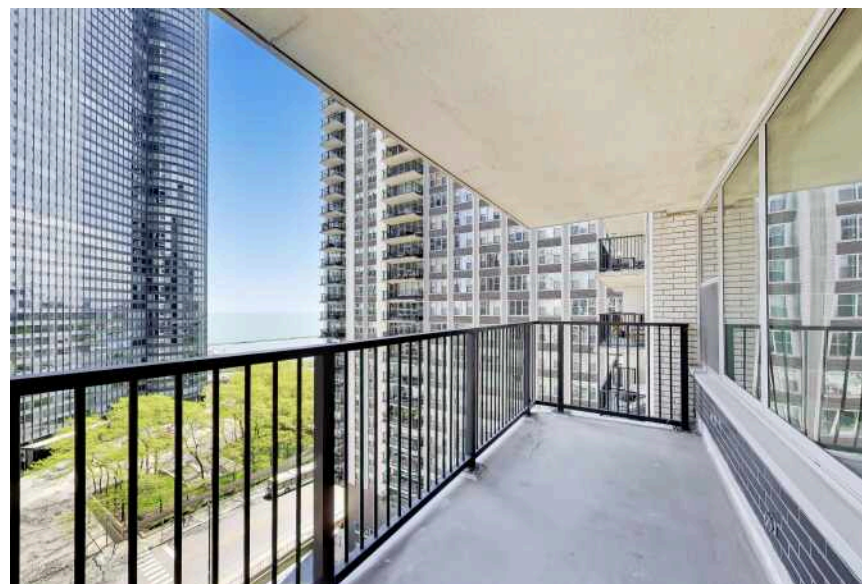
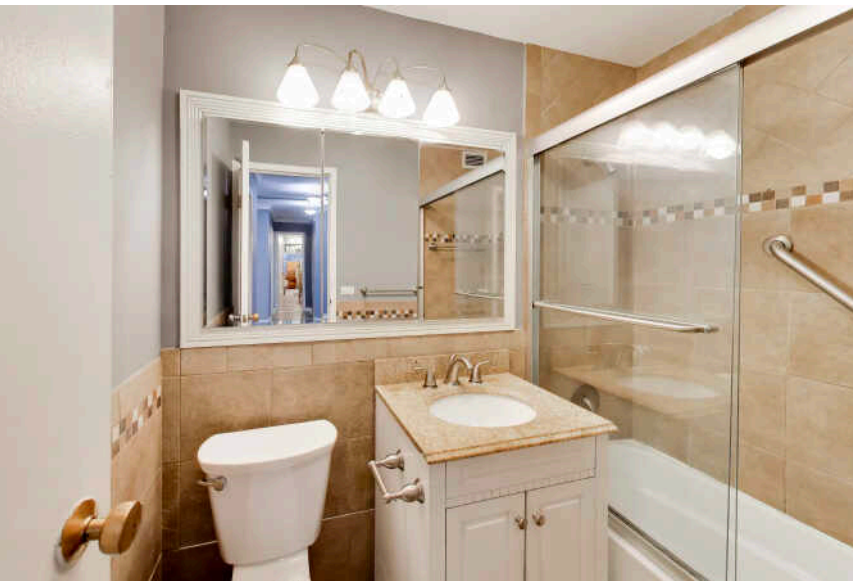
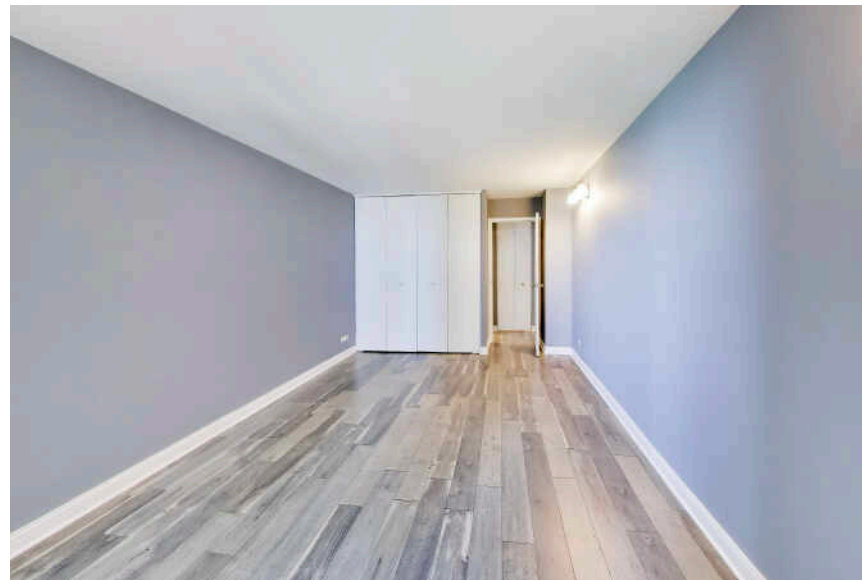




**1 BEDROOM**  
**1 BATH**  
**TAXES: \$5,868**  
**ASSESSMENTS: \$850 / MONTH**

Spacious and beautifully updated 1Bed/1Bath residence at iconic 400 East Randolph featuring breathtaking lake and city skyline views from an expansive private balcony. An exceptional opportunity offering elevated city living in one of Chicago's premier full-amenity buildings. This move-in-ready home features a desirable open layout with newer wood laminate flooring, fresh paint throughout, crown molding, and abundant natural light. Modern kitchen features granite countertops, stainless steel appliances, stove, brand-new microwave, and ample cabinet space. Remodeled bathroom showcases elegant tile work, brushed nickel fixtures, and timeless finishes. Oversized walk-in closet provides exceptional storage. Enjoy incredible indoor/outdoor living with an approximately 100 sq. ft. balcony overlooking the lake and city skyline. The full-service amenity building includes a state-of-the-art fitness center, indoor heated pool, sundeck, grilling area, basketball and racquetball courts, sauna, steam room, bike room, ping pong table, hospitality/meeting room, 24-hour door staff, onsite maintenance, resident shuttle service, restaurant, nail salon, and much more. Renovated hallways and newer windows further enhance the building. Assessment includes: Heat, Air Conditioning, Water, Gas, Common Insurance, Security, Doorman, TV/Cable, Exercise Facilities, Pool, Exterior Maintenance, Lawn Care, Scavenger, Snow Removal, and Internet Access. Prime New Eastside location just steps to Millennium Park, Lake Michigan, Navy Pier, lakefront trails, Mariano's, restaurants, shopping, and entertainment. Laundry located on the second floor. Indoor heated rental parking available for approximately \$220/month. Vacant and easy to show.







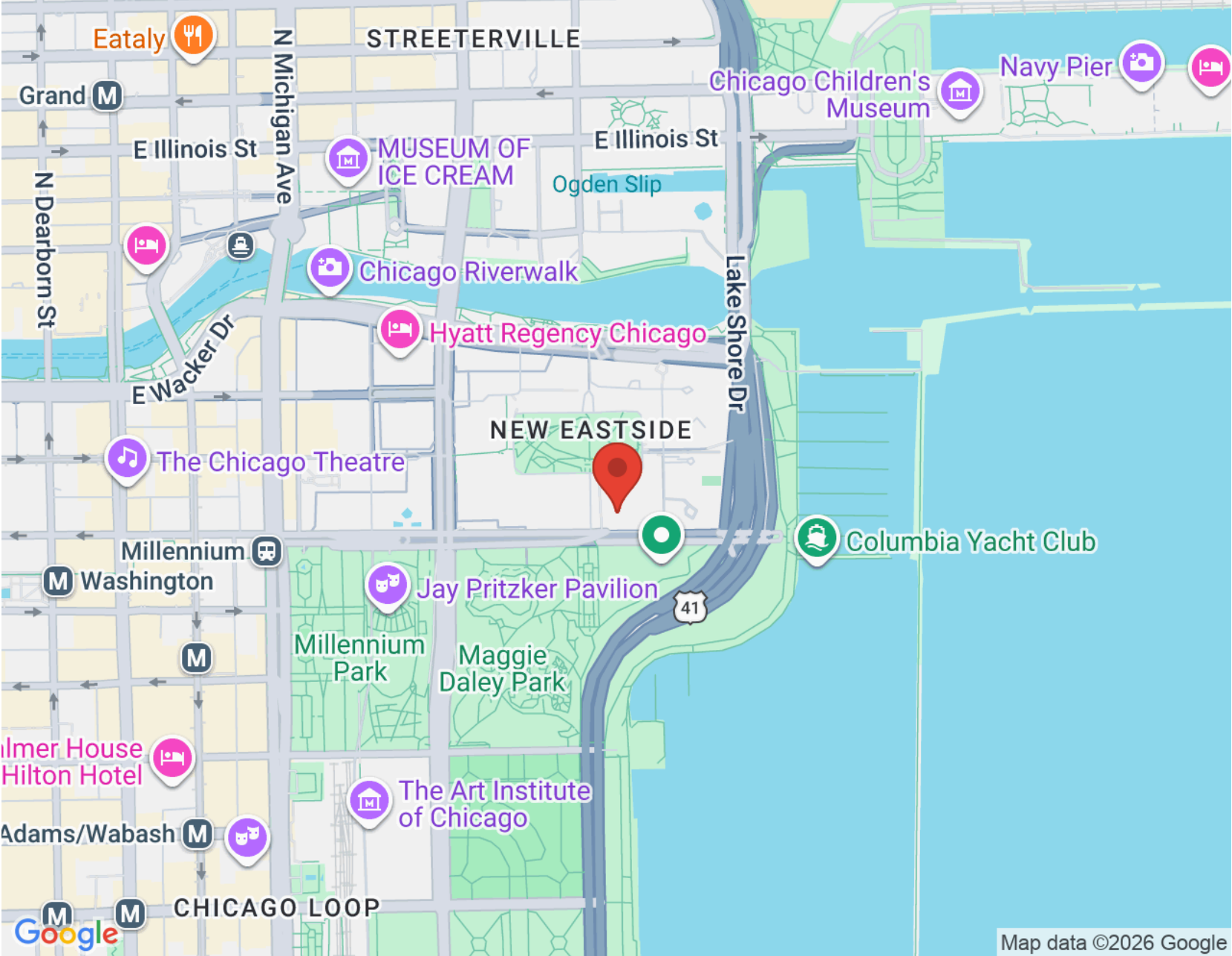
THE **NEW EASTSIDE** NEIGHBORHOOD HAS RISEN ABOVE ITS HUMBLE BEGINNINGS AS A RAIL YARD TO BECOME A VIBRANT AND UPSCALE HIGH-RISE HAVEN.

The neighborhood has been official since 1991, when the New Eastside Association of Residents (NEAR) was recognized and is one of several popular areas in or near The Loop.

Formerly home to the Illinois Central rail yards, the New Eastside is a mixed-use district that encompasses the Illinois Center and Lakeshore East. Early developments include the Aon Center and One Prudential Plaza, which used their airway rights to build above the railroad tracks.

The area is sought after for its convenient location, architecture, and amenities. Residents enjoy world-class parks, theater, shopping, bars, and restaurants with easy access to businesses in The Loop or a day at the beach.

Homes include high-rise condominiums that offer incredible views and amenities. During the winter, the Pedway makes getting through downtown a breeze, and commuters have access to numerous buses, trains, and the Metra.



NOTES \_\_\_\_\_

\_\_\_\_\_

\_\_\_\_\_

\_\_\_\_\_

\_\_\_\_\_

\_\_\_\_\_

\_\_\_\_\_

\_\_\_\_\_

\_\_\_\_\_

\_\_\_\_\_

\_\_\_\_\_



## GUIDO PIUNTI

(312) 983-2630

[GUIDO@ATPROPERTIES.COM](mailto:GUIDO@ATPROPERTIES.COM)

[GUIDOSELLSCHICAGO.COM](http://GUIDOSELLSCHICAGO.COM)



## ALEXA HARA

(847) 899-3700

[ALEXA@ATPROPERTIES.COM](mailto:ALEXA@ATPROPERTIES.COM)

[ALEXAHARAREALESTATE.COM](http://ALEXAHARAREALESTATE.COM)

