

400 WASHINGTON STREET
GLENVIEW | PARK MANOR





ROOM DIMENSIONS

LIVING ROOM : 23' × 14'

DINING ROOM : 11' × 19'

KITCHEN : 15' × 14'

PRIMARY BEDROOM : 15' × 12'

SECOND BEDROOM : 9' × 11'

THIRD BEDROOM : 9' × 14'

FOURTH BEDROOM : 12' × 11'

FIFTH BEDROOM : 13' × 14'

RECREATION ROOM : 34' × 26'

400 WASHINGTON STREET FEATURES

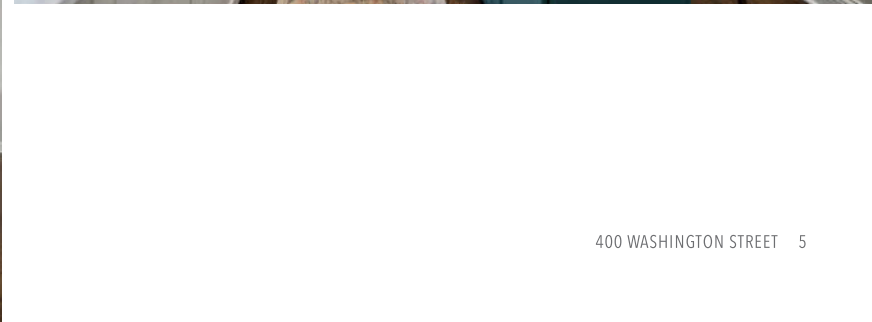
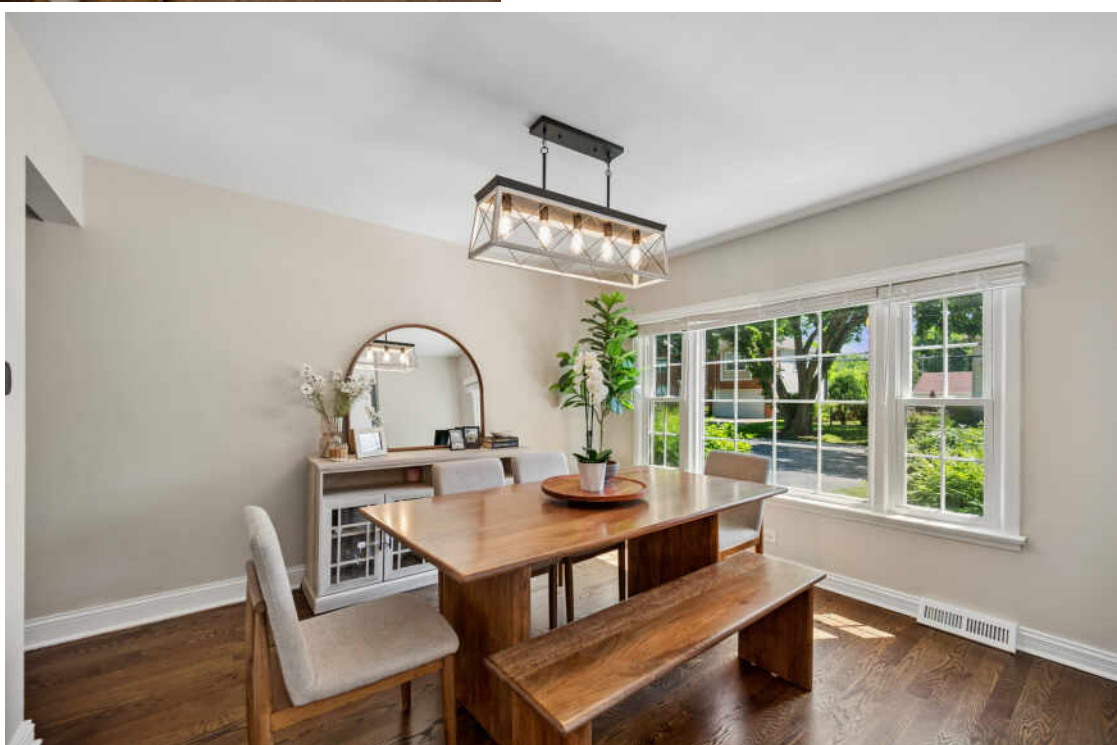
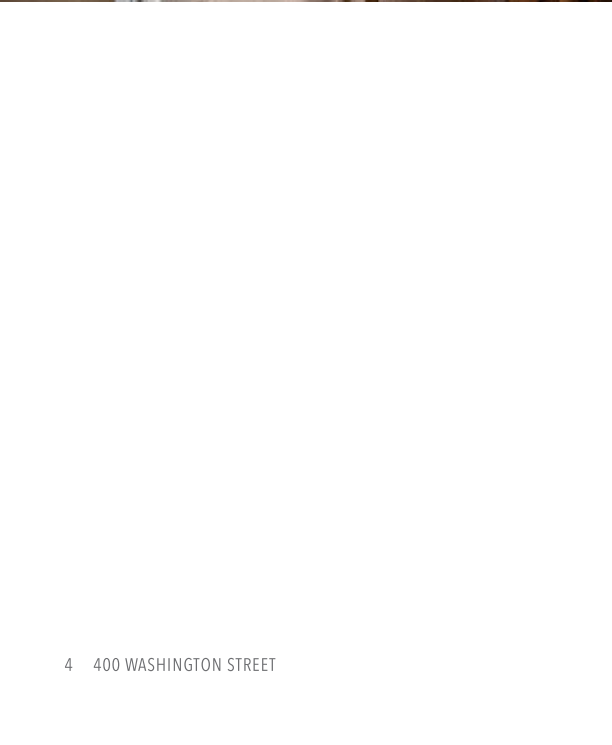
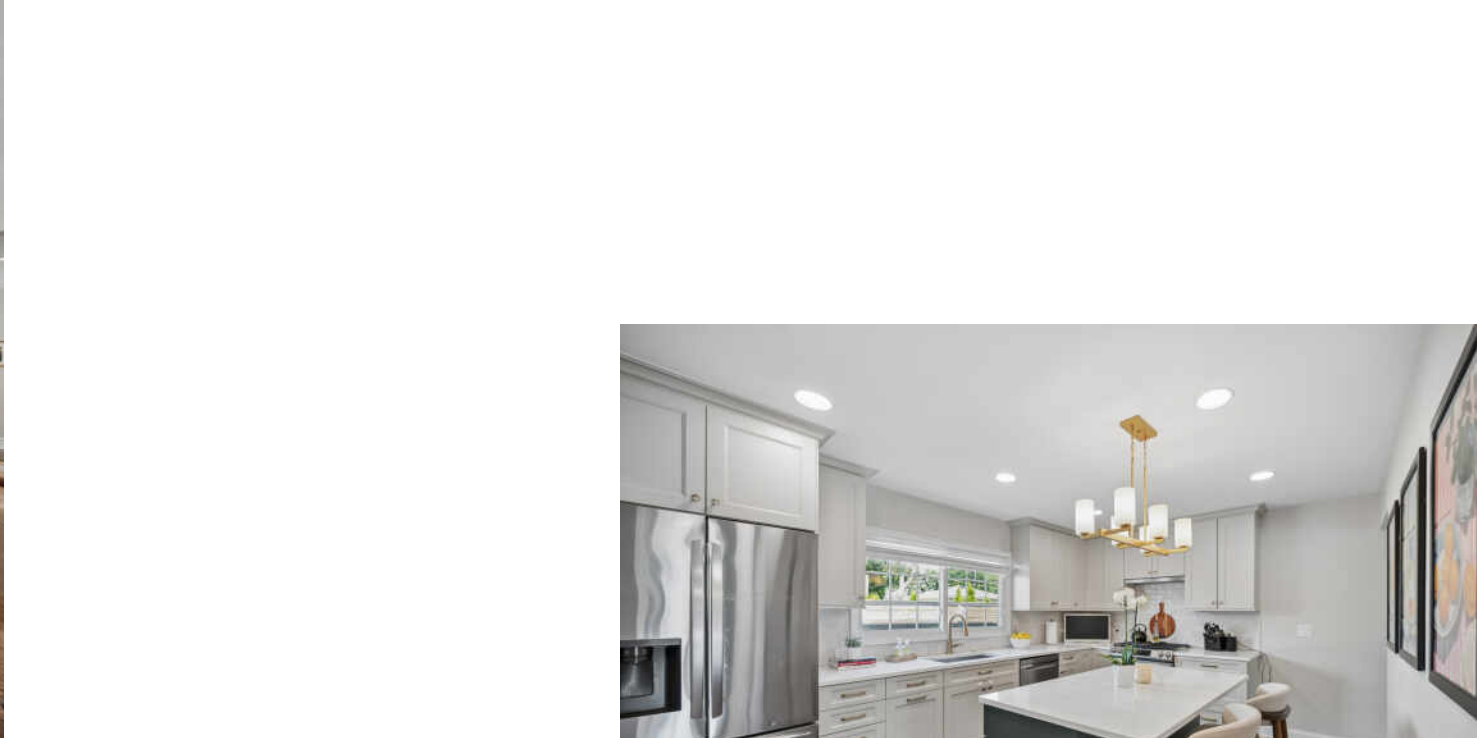
Nestled on a premium corner lot in Glenview's highly coveted Park Manor neighborhood, this meticulously maintained and newly renovated 5 bedroom, 3 bathroom home is a rare gem! The heart of this home is the brand new eat-in kitchen, beautifully appointed with stainless steel appliances, new cabinetry, quartz countertops, pretty backsplash, and breakfast nook. Further, the main level boasts a bright living room, sunny dining room, three spacious bedrooms (one currently being used as an office), and a full bath. Upstairs, you will find two additional bedrooms and a recently renovated full bath-a versatile layout easily reimagined as a private, full-floor primary bedroom suite. The full finished basement expands your living space exponentially, offering a massive recreation room, home gym, or play room, plus a spacious kitchenette and full bathroom that is absolutely ideal for hosting guests or an in-law arrangement. Outside, enjoy beautifully maintained landscaping and a private, fully fenced side yard featuring a dedicated sitting area and plenty of room to entertain. An extra-wide driveway plus a 2-car attached garage. Unbeatable location just steps from parks, top-rated award-winning schools, the library, and vibrant downtown Glenview's shops, restaurants, and the Metra train!

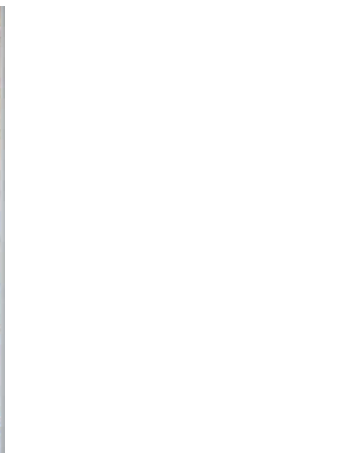


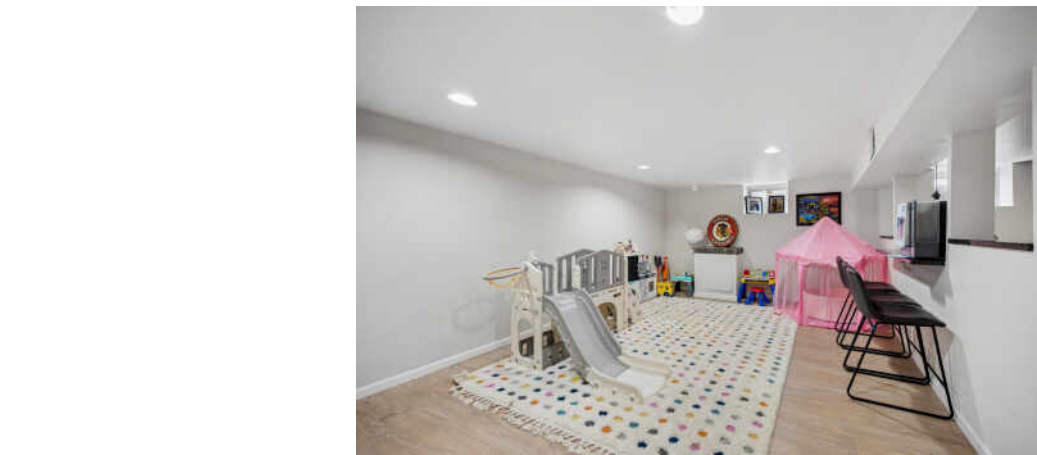
5 BEDROOM

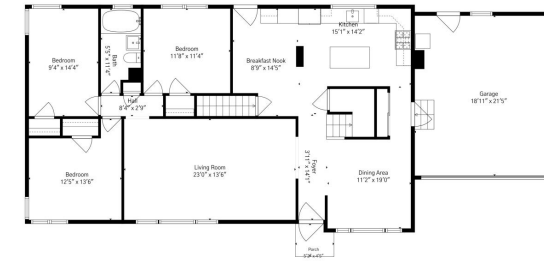
3 BATH

TAXES: \$9,109

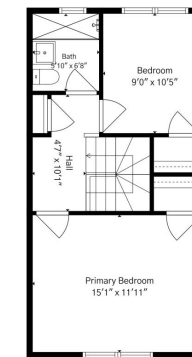




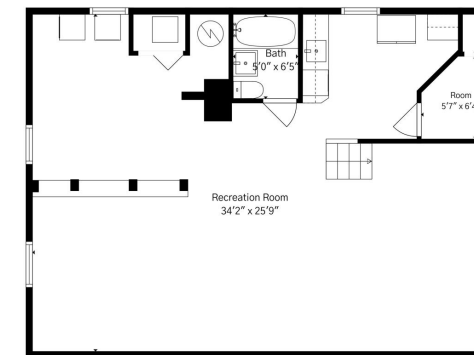




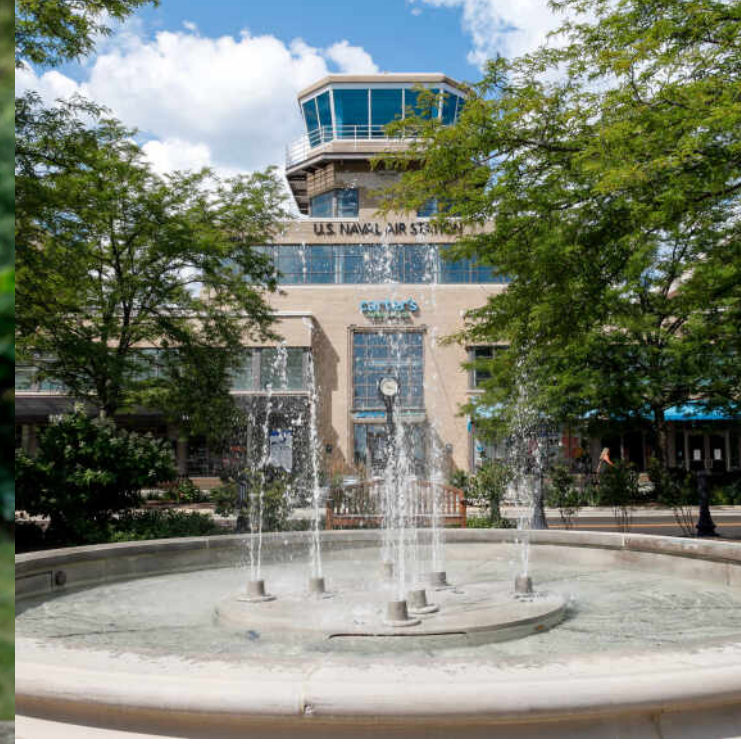
Floor Plan Created By Cubicasa App. Measurements Deemed Highly Reliable But Not Guaranteed.



Floor Plan Created By Cubicasa App. Measurements Deemed Highly Reliable But Not Guaranteed.



Floor Plan Created By Cubicasa App. Measurements Deemed Highly Reliable But Not Guaranteed.



JUST 20 MILES FROM DOWNTOWN CHICAGO, **GLENVIEW** IS A DESTINATION IN ITS OWN RIGHT.

The scenic North Shore town has expanded rapidly thanks to its established neighborhoods, convenient access to transportation, and array of amenities.

More than 45,000 people call Glenview home, with properties ranging from townhomes and condominiums to luxury custom homes featuring the latest amenities. Newer homes can also be found at The Glen, a large development on the site of the former Glenview Naval Air Station that offers an assortment of shops and restaurants, a movie complex, the Kohl Children's Museum, and access to one of the town's two Metra stations.

Glenview is served by a number of public and private schools, including Glenbrook South High School, ranked among the top in the nation according to Business Insider.

The Glenview Park District offers indoor and outdoor pools, golf courses, soccer fields, nature trails, an ice center, tennis club, and multi-purpose community center.

In addition to modern development, Glenview celebrates and preserves its early days with two notable attractions: Wagner Farm and The Grove. A 20-acre working farm, Wagner Farm has hands-on programs - horseback riding, tractor driving, and other activities - that reflect a day in the life of a 1920s farmer. The Grove, a National Historic Landmark, includes a prairie, nature trails, historic buildings, and a log cabin that dates back to the 1850s.



KATIE HACKETT BAISLEY

(847) 271-3733

KATIEHACKETT@ATPROPERTIES.COM

k h b
residential

@properties | **CHRISTIE'S**
INTERNATIONAL REAL ESTATE