

4015 N MILWAUKEE AVENUE #301

PORTAGE PARK





ROOM DIMENSIONS

LIVING ROOM : 18' × 15'

KITCHEN : 09' × 08'

PRIMARY BEDROOM : 12' × 12'

SECOND BEDROOM : 11' × 10'

2 BEDROOM

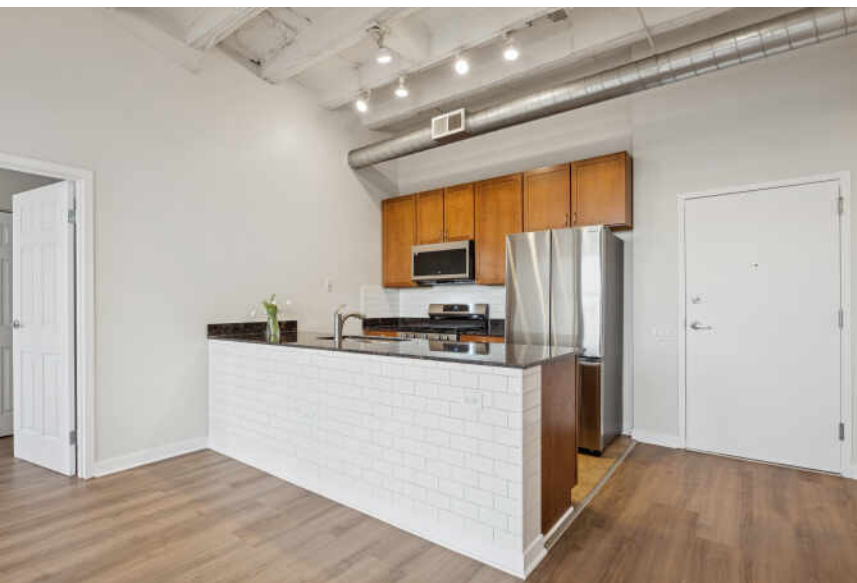
2 BATH

TAXES: \$4,032

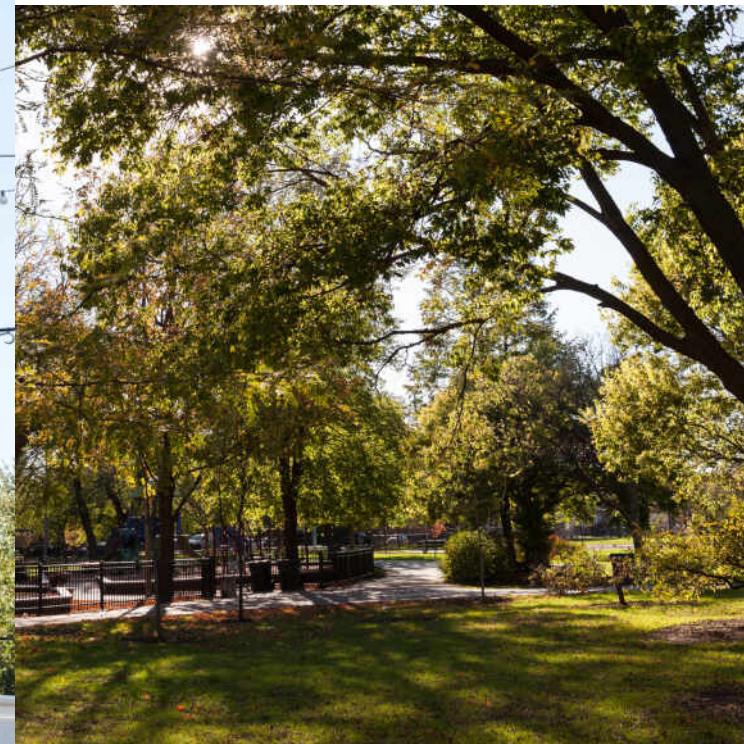
ASSESSMENTS: \$404 / MONTH

NEWLY RENOVATED 2 BEDROOM 2 BATHROOM CONDO IN THE HISTORICAL KLEE PLAZA ELEVATOR BUILDING IN THE HEART OF SIX CORNERS!

This Airy Concrete Loft Features Open Kitchen With All New Samsung Appliances Package Including Counter Depth Refrigerator, Granite Counters, Breakfast Bar, New Subway BackSplash And Accent Wall. Central Heat And AC, New LVH Flooring Throughout, Newer LG Front Loading Laundry Machines, New Extra Wide Bathroom Vanities With Soft Close Drawers And Black Metal Faucet Fixtures and Hardware! These Soaring 10 Ft Ceilings And Tall Windows Make For A Natural Light Filled, And Open Living Space. Plentiful Storage Throughout Including Walk In Organized Closet. All Rooms Were Freshly Painted Throughout, Along With The Addition Of New Outlet And Lighting Face Plate Covers. Monthly Assessments Include Water, Internet, And Cable. Assigned Attached Garage Parking Space Included. Six Corners Offers All The Conveniences Of Grocery Stores And Shops Including Jewel Osco, Aldi, And Target. Many Local Restaurants And Shops Including New City Cafe, Community, And Gracie O'Malley's To Name A Few. Easy Access To Expressway, Public Transportation And More.







AS THE CITY'S STREETCAR LINE WAS EXTENDED, RESIDENTS DISCOVERED **PORTAGE PARK**, A SMALL ENCLAVE ON THE CITY'S NORTHWEST SIDE.

The neighborhood was a breath of fresh air for residents escaping crowded city tenements. Today's residents still enjoy the respite that the neighborhood offers, along with its beautiful parks and access to public transit.

Homes are at the heart of this community, which is part of Chicago's historic Bungalow Belt. The majority of homes are classic bungalows or single-family homes, with a few condominium buildings in the mix.

Portage Park's namesake park in the neighborhood's center is the largest on the city's Northwest Side. A community gem since 1913, the park has walking trails, playgrounds, wide-open spaces, and a pool that was used for the U.S. Olympic Team time trials in the 1970s.

Along Irving Park Road there is an eclectic mix of eateries including traditional steakhouses, classic diners, and casual coffee shops. There are also bars ranging from trendy cider houses and breweries to small dives and karaoke hotspots. Shopping is abundant in the Six Corners area with a resurgence of new shops.

Portage Park is accessible by the CTA Blue Line's Montrose Station and Metra's Milwaukee District North stop just west of the expressway.



JOHN HUEBNER

REAL ESTATE BROKER

JHUEBNER@ATPROPERTIES.COM

(773) 558-9216

THIRDBLVD.COM



KATIE KULL-UTTERBACK

765.532.5001

7732350300

KATIEU@ATPROPERTIES.COM

THIRDBLVD.COM