

408 BUCKINGHAM PLACE  
LIBERTYVILLE





#### ROOM DIMENSIONS

LIVING ROOM : 18' × 14'

FAMILY ROOM : 13' × 22'

DINING ROOM : 14' × 9'

KITCHEN : 16' × 10'

PRIMARY BEDROOM : 16' × 21'

SECOND BEDROOM : 18' × 11'

THIRD BEDROOM : 11' × 15'

FOURTH BEDROOM : 13' × 11'

4 BEDROOM

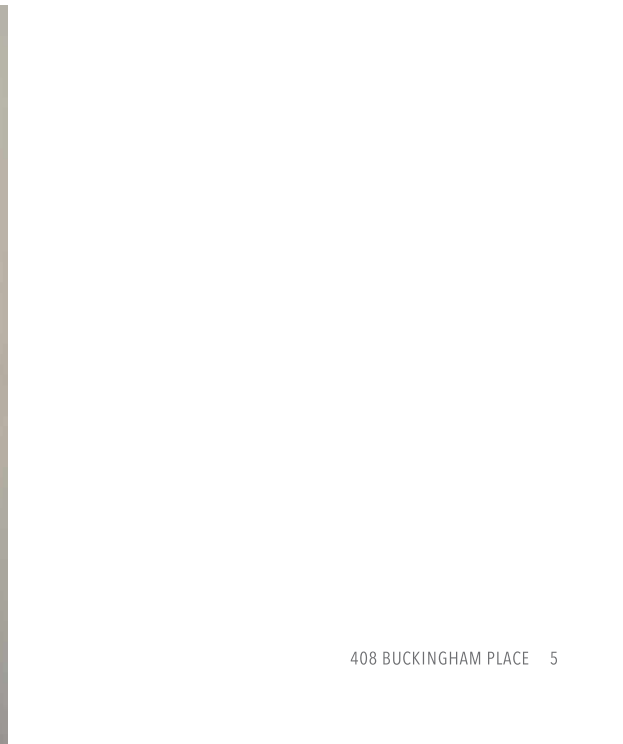
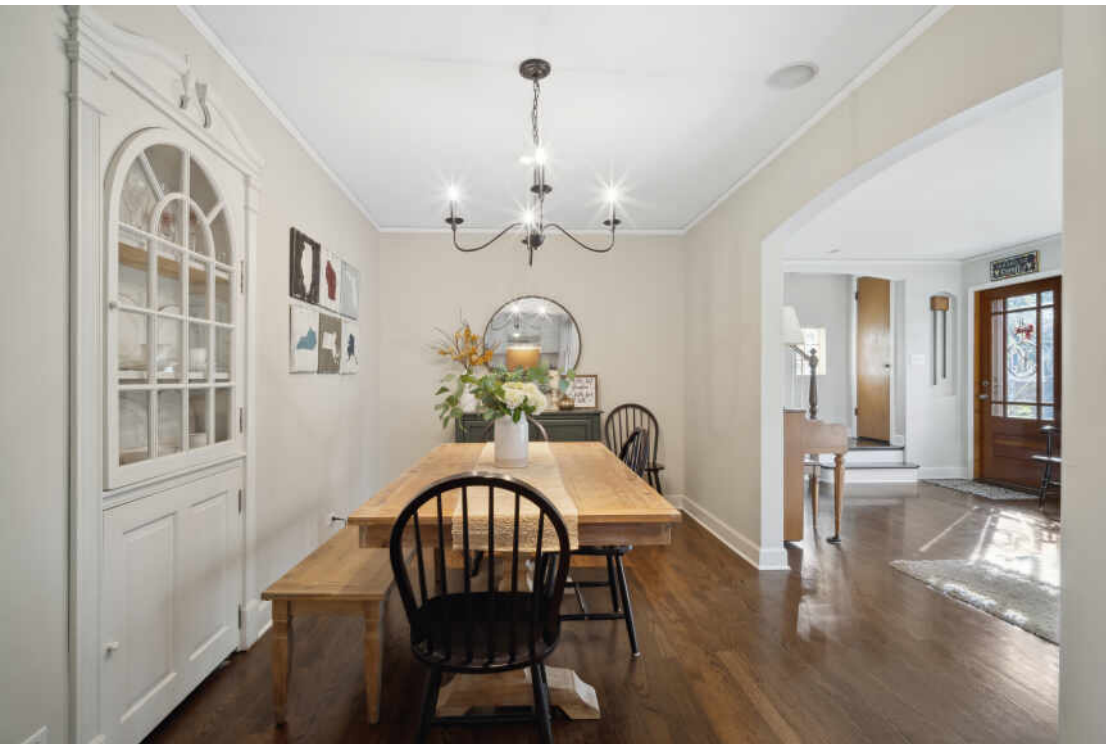
3.1 BATH

TAXES: \$12,752

## YOUR HAPPILY EVER ALWAYS

Perfectly placed in the Copeland school district on a peaceful street that is just a walk to downtown, this updated and expanded Georgian home will be sure to impress! An attractive brick paver driveway and front entry leads you into this charming abode. After passing the adorable sitting area and dining room, this flowing open floor plan then takes you to the heart of the home, the bright, gourmet, and updated kitchen that boasts high-end stainless steel appliances, Cambria quartz countertops, large kitchen island, and so much more! The kitchen opens up to an eating area and large family room with a new custom-built in entertainment center, and cozy brick fireplace perfect for fall evenings. Enjoy relaxing and entertaining under the stars in the large and fully-fenced backyard that features a deck and gazebo. Ascend upstairs to find 3 large bedrooms that includes an incredible primary bedroom with a giant spa-like ensuite to retreat to and relax in after a long day. The spacious finished basement conveniently offers an incredible workout room, recreation area, 4th bedroom, and full bath- just perfect for guests or in-law arrangements. Above the attached and heated two-car tandem garage there is a fabulous bonus attic space that would make an amazing playroom, office, or den! This home conveniently offers a dual zoned HVAC and central vac! All of this is only minutes away from everything Libertyville has to offer: Award-winning schools, vibrant community gatherings, great cuisine offerings, and more! Everything you need is here.



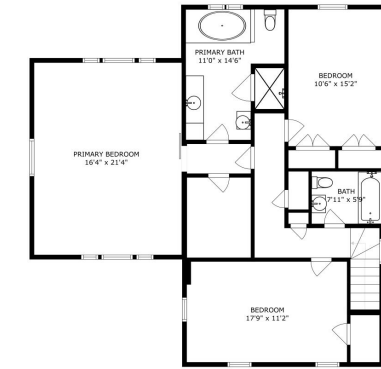




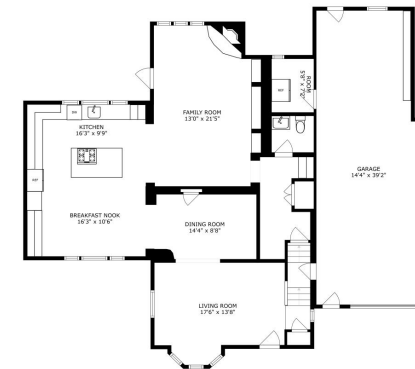




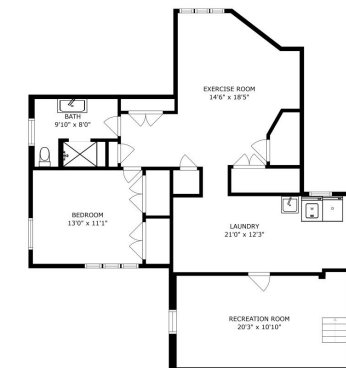




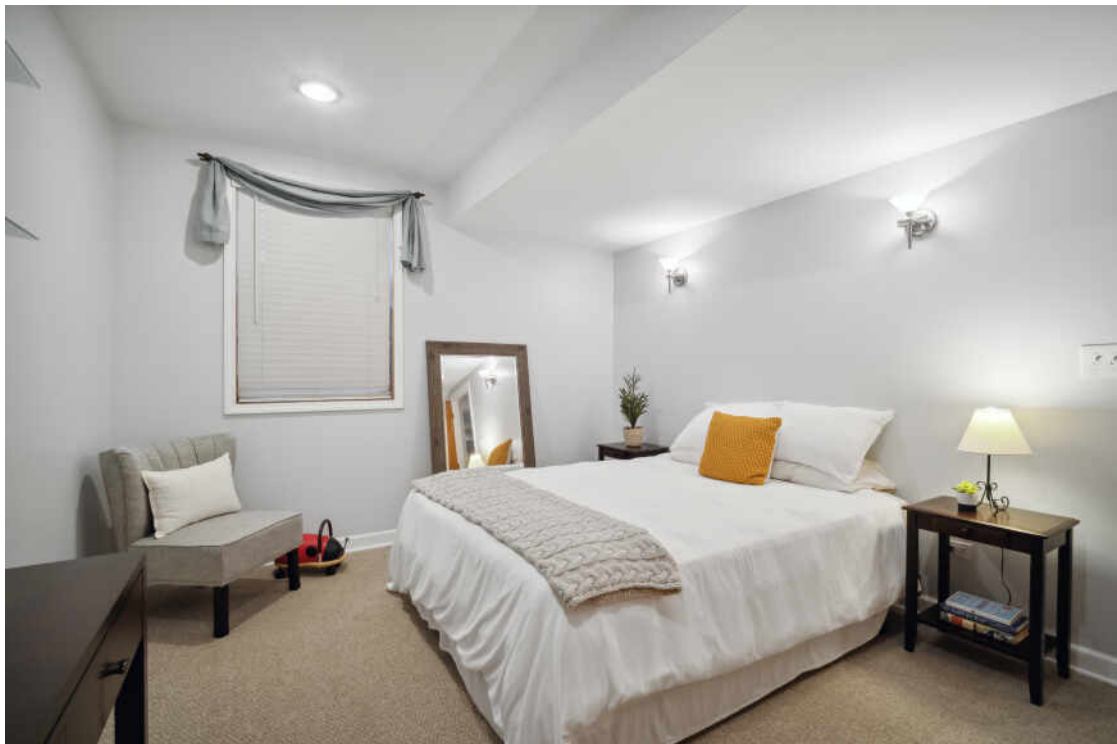
SIZES AND DIMENSIONS ARE APPROXIMATE, ACTUAL MAY VARY



SIZES AND DIMENSIONS ARE APPROXIMATE, ACTUAL MAY VARY



SIZES AND DIMENSIONS ARE APPROXIMATE, ACTUAL MAY VARY







# LIBERTYVILLE OWES MUCH OF ITS EARLY GROWTH TO THE RAILROAD.

A spur on the Milwaukee Road train line brought rapid growth to the area, which was incorporated in 1882.

Today the Metra rail system provides a convenient commute for residents of this vibrant community.

Libertyville's bustling downtown district received a Great American Main Street Award by the National Trust for Historic Preservation. The downtown was rebuilt after a fire in 1895 destroyed most of the buildings; they were rebuilt with mandated brick reconstruction, giving them a singular style.

The downtown area includes bakeries, gourmet coffee vendors, and a microbrewery. In spring and summer months, residents enjoy a farmers market that has been operating for more than three decades.

In addition to a variety of restaurants, there are upscale boutiques, antique shops, and gift stores along Milwaukee Avenue.

Residents have eight miles of bike paths and numerous parks to enjoy along with the annual Libertyville Days Festival, an outdoor concert series, and other community events.

Three Metra stations and the Tri-State Tollway make for a convenient commute to downtown Chicago, O'Hare International Airport, and suburban corporate headquarters.





## NOTES





## GINA SHAD

(847) 970-8513

847-367-0500

GINASHAD@ATPROPERTIES.COM

WWW.GINASHADREALESTATE.COM



CHRISTIE'S  
INTERNATIONAL REAL ESTATE

408BUCKINGHAMPL.INFO

All specifications, features, designs, price, assessments, taxes and materials are subject to change without notice. Depicted floor plans and architectural renderings are only an artist's impression.

