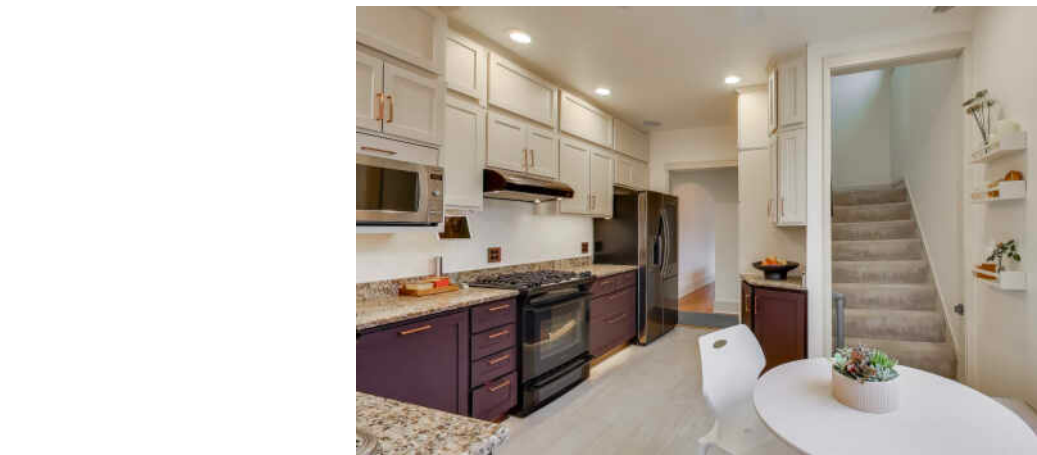


408 E EVERGREEN STREET
WHEATON

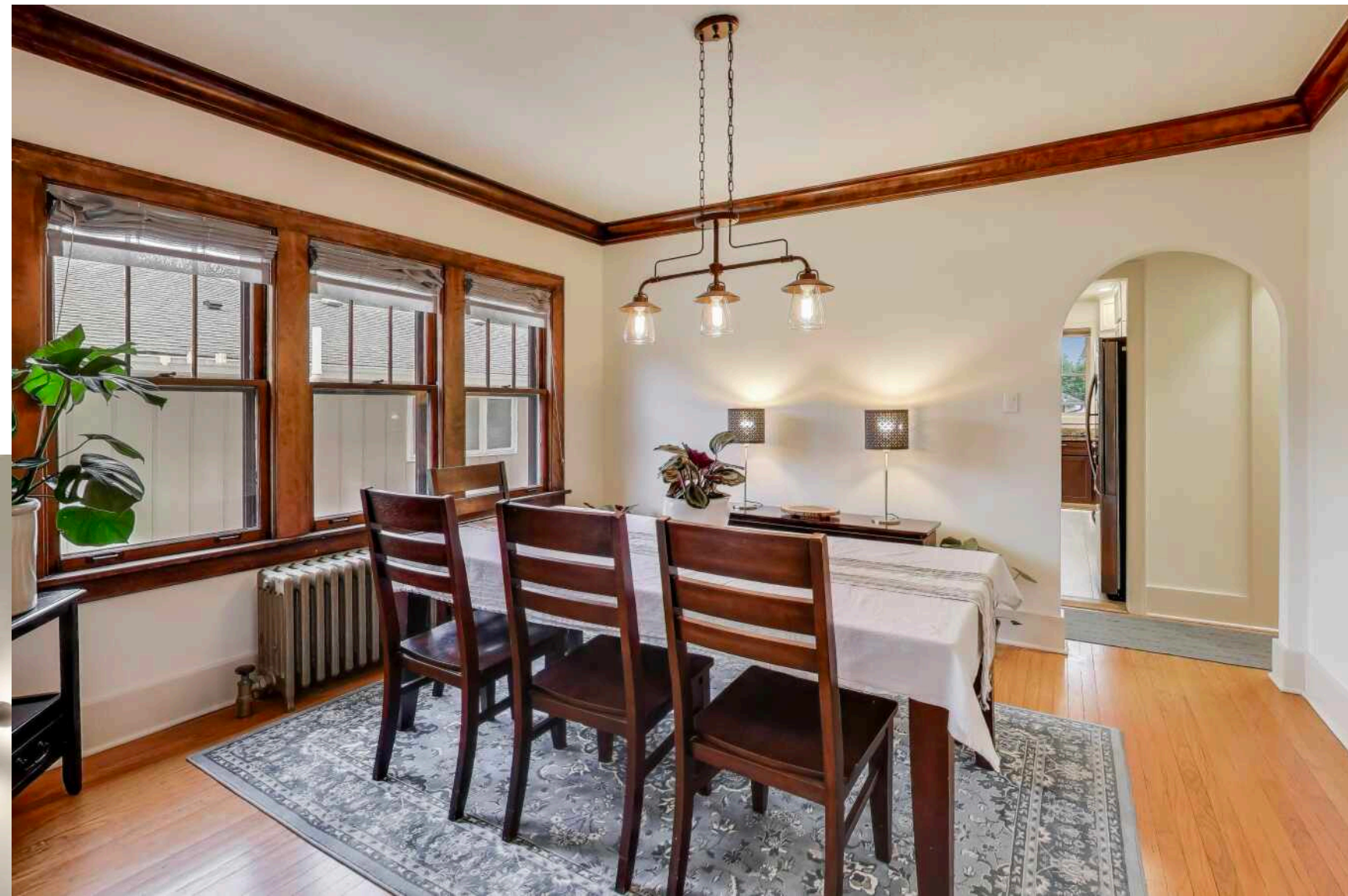




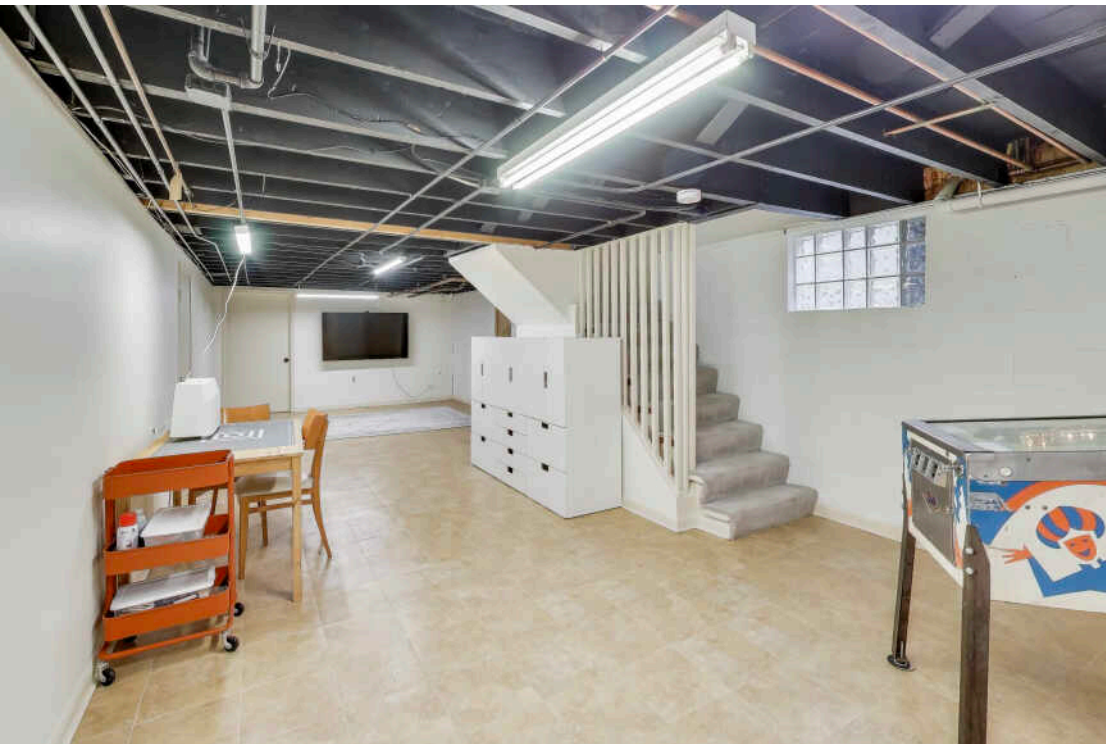
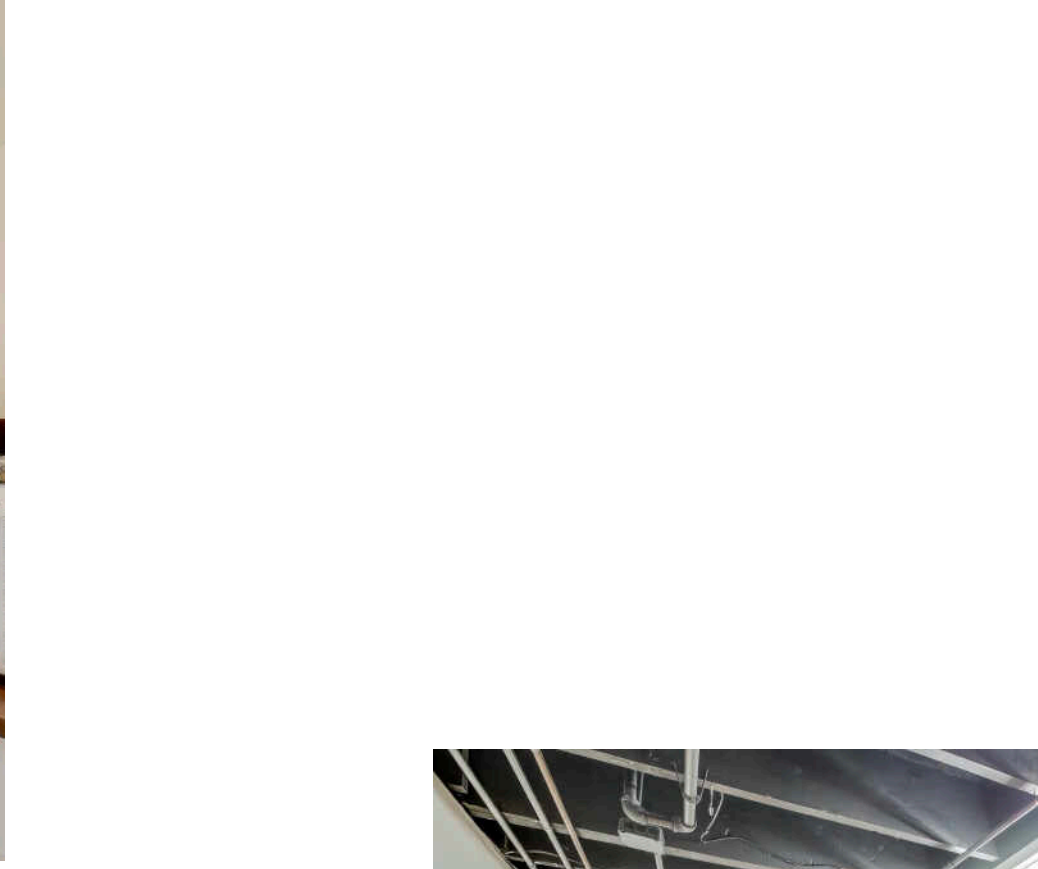
WELCOME HOME

A Classic Wheaton Gem! Discover classic elegance and modern updates in this stunning North Wheaton home. Located just a short stroll from downtown and the Metra station, this home offers the best of in-town living. Step inside to find beautiful naturally lit living space galore with rich hardwood floors and charming original trim that speak to the home's history. The updated kitchen and a freshly painted interior give it a fresh, modern feel - don't miss the foot pedals that operate the water or the separate faucet that delivers instant "boiling" water and a new ultra quiet Bosch dishwasher. With five bedrooms, two baths, and a finished basement, there's plenty of space for everyone. There are also built in speakers that can be controlled right from the convenience of your phone/computer. The property sits on a beautiful, oversized lot with a fully fenced yard, providing a private oasis for outdoor activities. Enjoy the beautiful weather from the gorgeous front porch or entertain on the back patio. The property also includes a large two-car detached garage equipped with an EV charger and a shed for all your storage needs. This is a truly special home. Award winning Wheaton school district 200-Lowell Elementary, Franklin Middle school, Wheaton North High School.

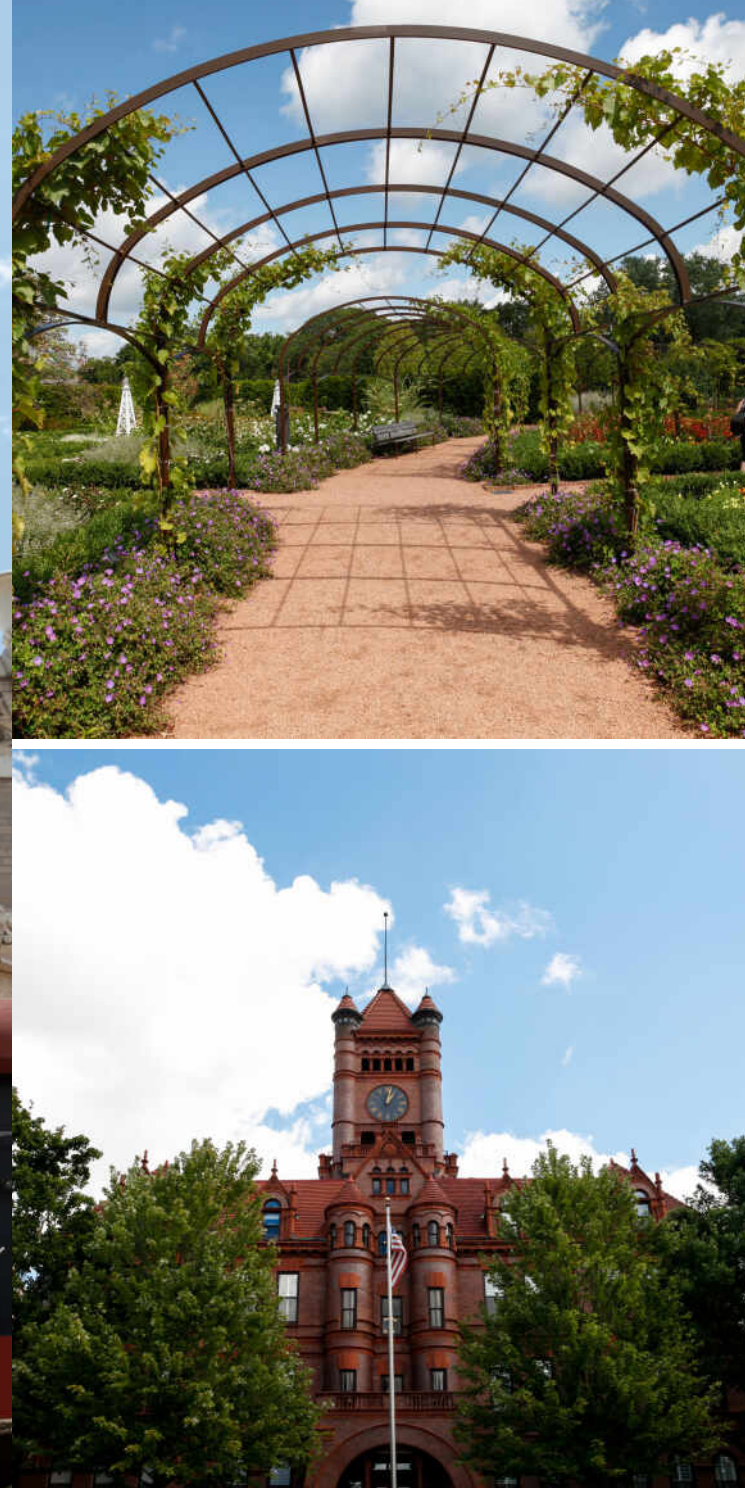
5 BEDROOM
2 BATH











WHEATON HAS RACKED UP MORE THAN ITS SHARE OF AWARDS.

The affluent community ranks among the “top 25 highest earning towns” and one of the best places to live by *Money* magazine.

The Wheaton Public Library is regularly ranked among the top in the nation. The Wheaton Park District, with 52 parks and more than 800 acres, has won several National Gold Medal Awards for Excellence from the National Recreation and Park Association. The park district includes the 135-acre Lincoln Marsh Natural Area with over 300 plant and animal species; the Cosley Zoo, which houses more than 200 animals; and the 27-hole Arrowhead Golf Club.

Wheaton is home to the prestigious Chicago Golf Club, the oldest 18-hole course in the country and host of numerous U.S. Open and U.S. Amateur Golf Championships, and the Cantigny Park and Golf Course, which includes a championship golf course and two museums. The county also owns the Danada Forest Preserve and Equestrian Center, once an estate and home to a Kentucky Derby winner.

The community has seen considerable residential and business development including its landmark, the Wheaton Center, a six-building apartment complex downtown that includes two 20-story high-rise buildings.



NOTES

[illegible]



CRAIG DOHERTY

(630) 670-8334

CRAIGDOHERTY@ATPROPERTIES.COM



All specifications, features, designs, price, assessments, taxes and materials are subject to change without notice. Depicted floor plans and architectural renderings are only an artist's impression.

