

408 S MILLER COURT
LOMBARD





ROOM DIMENSIONS

LIVING ROOM : 17' × 21'

FAMILY ROOM : 13' × 17'

DINING ROOM : 11' × 14'

KITCHEN : 12' × 15'

PRIMARY BEDROOM : 14' × 18'

SECOND BEDROOM : 12' × 12'

THIRD BEDROOM : 14' × 15'

FOURTH BEDROOM : 12' × 11'

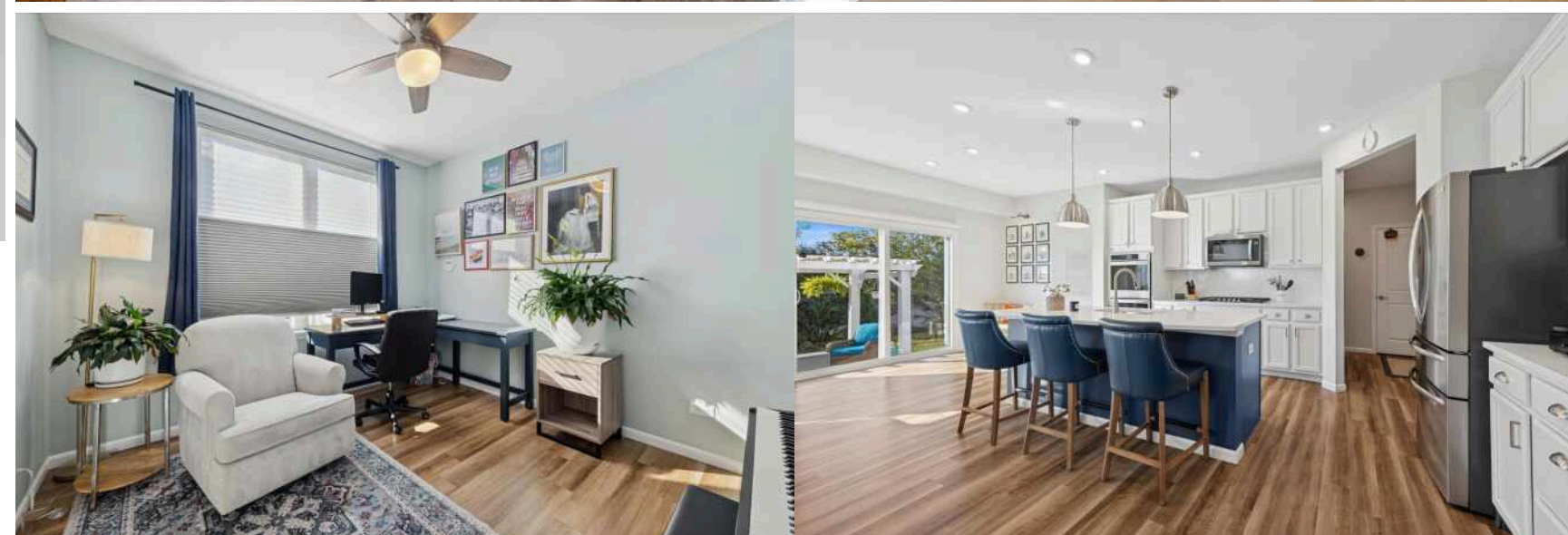
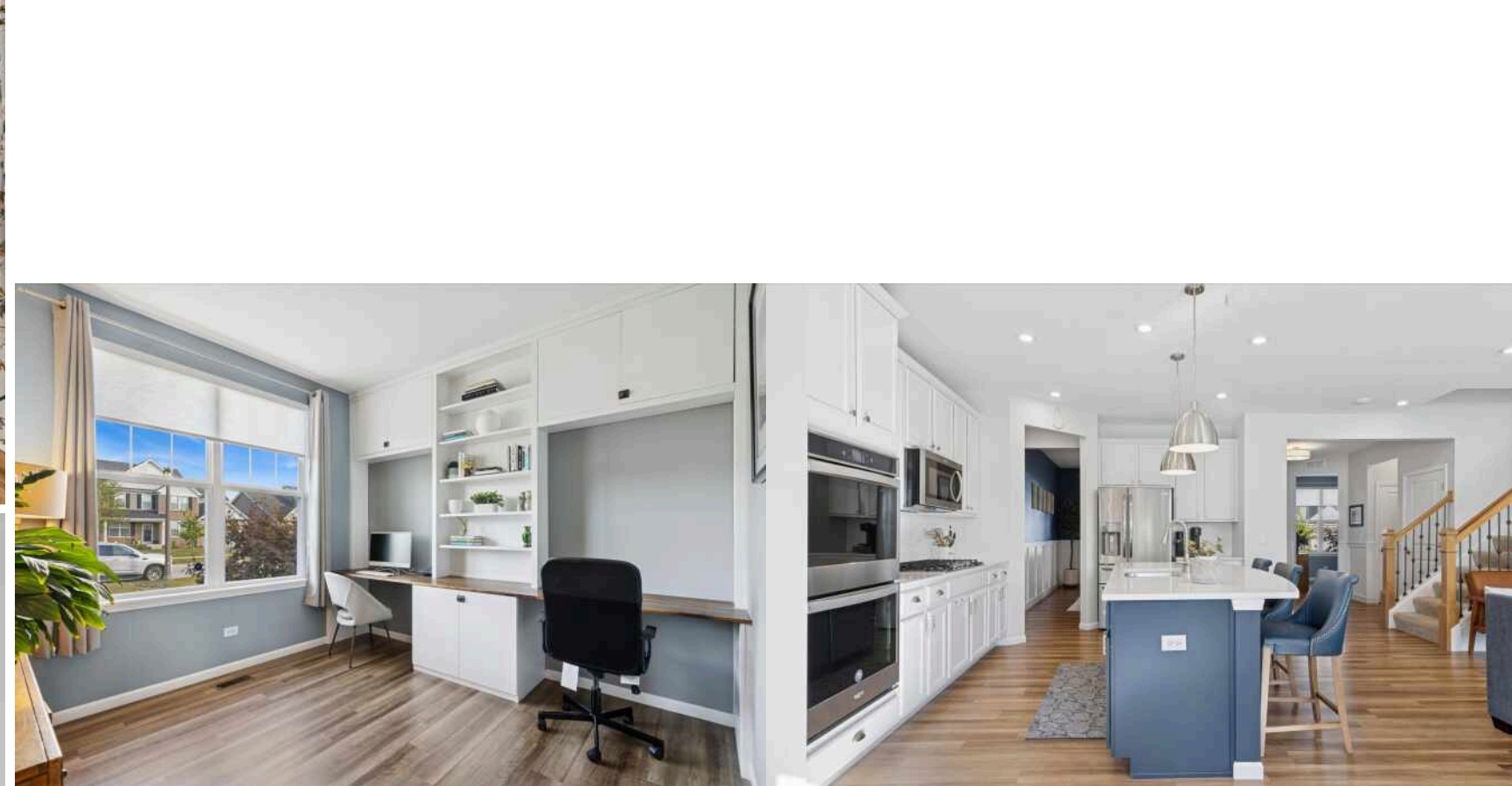
5 BEDROOM

5.1 BATH

TAXES: \$17,413

ASSESSMENTS: \$250 / QUARTER

Modern luxury meets everyday convenience in this stunning 2019-built home, just blocks from the Metra, Prairie Path, and vibrant downtown Lombard. Designed for both entertaining and everyday living, the open floor plan showcases a formal dining room, expansive great room, and a chef's kitchen with quartz countertops, oversized island, stainless appliances, and adjacent scullery. Flexible spaces abound with a main-floor bedroom and full bath, private office with built-ins, convenient first-floor laundry and mudroom, and a finished basement with 9' ceilings, workout/flex room, and fifth full bath. Upstairs, four spacious bedrooms all feature walk-in closets, plus a versatile loft/playroom. The luxurious owner's suite offers a spa-inspired bath with soaking tub and separate shower. High-end finishes include 9' ceilings, wainscoting, and custom millwork throughout. Over \$150,000 in upgrades in this home including professional landscaping, fully fenced yard and Solar Panels. Walking distance to Madison Elementary, this move-in ready home delivers the perfect blend of style, space, and location.





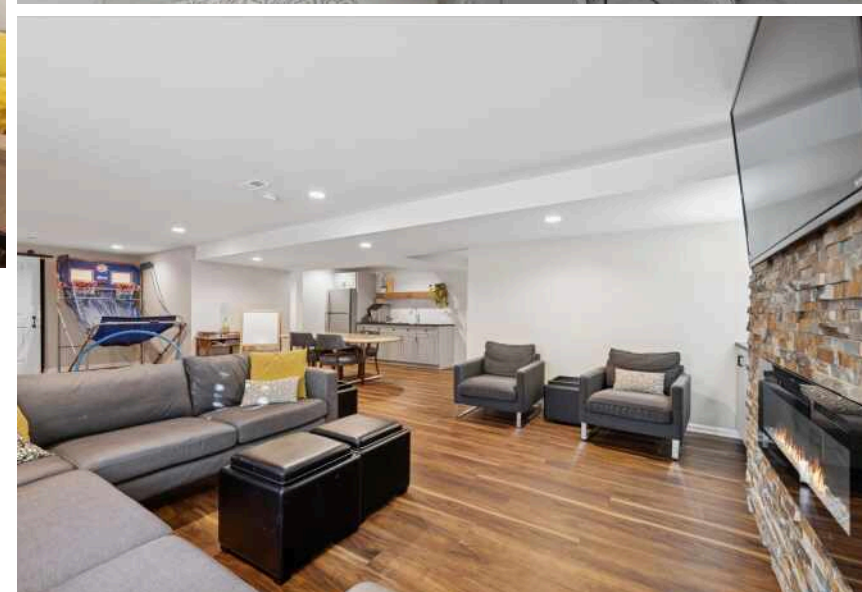
TOTAL: 4032 sq. ft
 BELOW GRADE: 1029 sq. ft, FLOOR 2: 1482 sq. ft, FLOOR 3: 1521 sq. ft
 EXCLUDED AREAS: UTILITY: 294 sq. ft, UNDEFINED: 9 sq. ft, GARAGE: 453 sq. ft,
 WALLS: 288 sq. ft

THE COLLECTIVE

Measurements Are Highly Reliable But For Marketing Only. Produced By The Collective.









DESIGNATED THE "LILAC VILLAGE," **LOMBARD** IS CHARACTERIZED BY ITS QUAIN, TREE-LINED STREETS AND CLOSE-KNIT COMMUNITY.

Lombard residents are proud of the village's rich history, diverse entertainment opportunities, and unique seasonal events such as Cruise Nights and Summer Concert Series, which puts vintage vehicles and live music on display throughout the summer.

Since 1930, the village has hosted an annual lilac festival and parade in May. Lilac Time is Lombard's famed 16-day horticultural festival held at the beautiful Lilacia Park. Several other lilac-themed events take place throughout the year, including a formal ball, concerts, wine and beer tastings in the park, and an arts and crafts fair.

Metra's Union Pacific West Line railway stops in Lombard, providing commuter transportation to downtown Chicago.



NOTES





SHELLEY BRZOWSKI-O'GRADY

(847) 772-4549

630-530-0900

SHELLEY@ATPROPERTIES.COM



All specifications, features, designs, price, assessments, taxes and materials are subject to change without notice. Depicted floor plans and architectural renderings are only an artist's impression.

