

**408 W THOMAS STREET**  
ARLINGTON HEIGHTS





#### ROOM DIMENSIONS

LIVING ROOM : 17' × 13'

KITCHEN : 11' × 10'

MASTER BEDROOM : 14' × 11'

2ND BEDROOM : 12' × 10'

3RD BEDROOM : 12' × 10'

EATING AREA : 13' × 7'

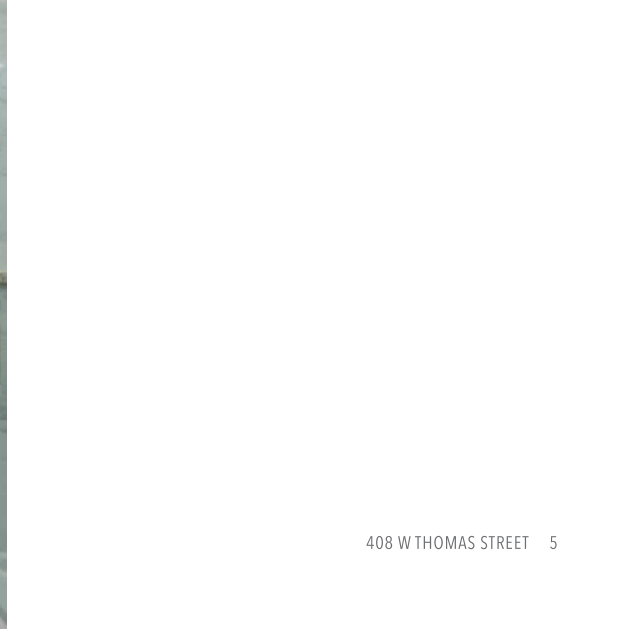
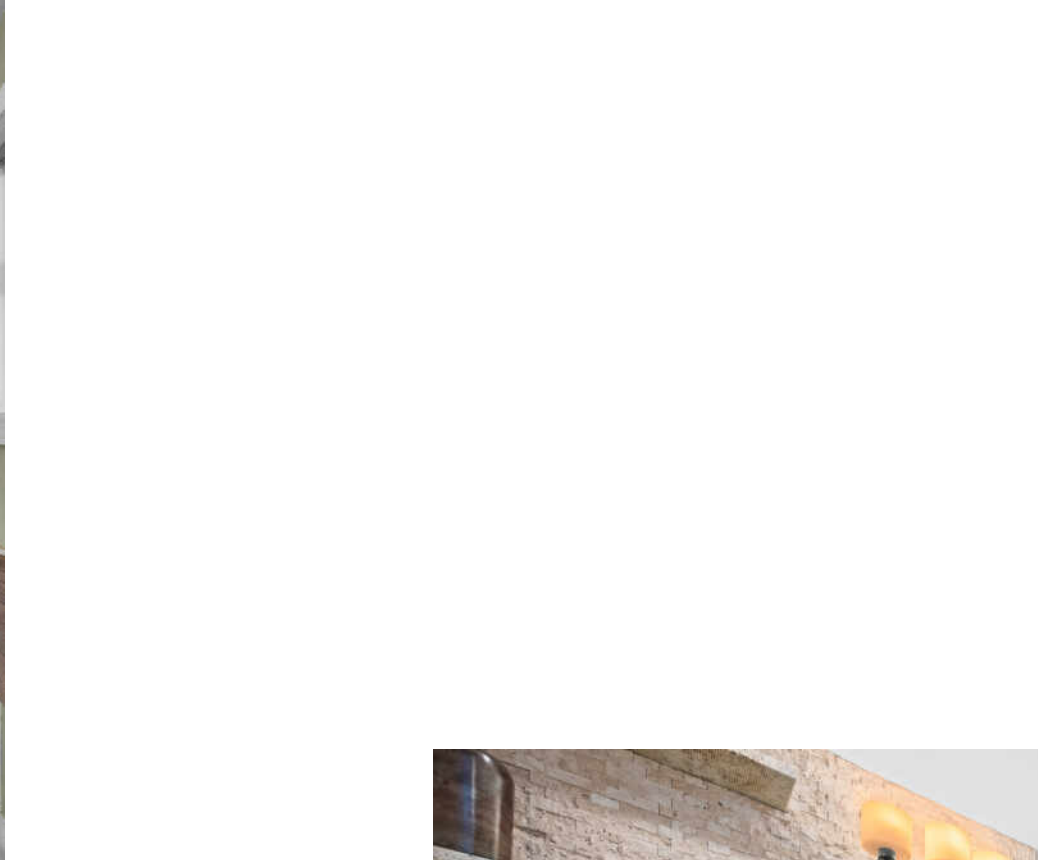
Adorable Hasbrook Ranch! Beautifully updated throughout, this home features an open-concept floor plan. The fully appointed kitchen boasts crisp white cabinetry, quartz countertops, stainless steel appliance package and adjoining eating area. The home offers three generously sized bedrooms, including a primary suite with a private en-suite bath and walk-in shower. Sliding doors lead to a spectacular outdoor oasis-complete with a designer stone patio, built-in fire pit, and pergola with accent lighting that creates a truly magical setting. An oversized one-car garage adds convenience. Ideally located just a short distance from top-rated schools, parks, and shopping.

3 BEDROOM

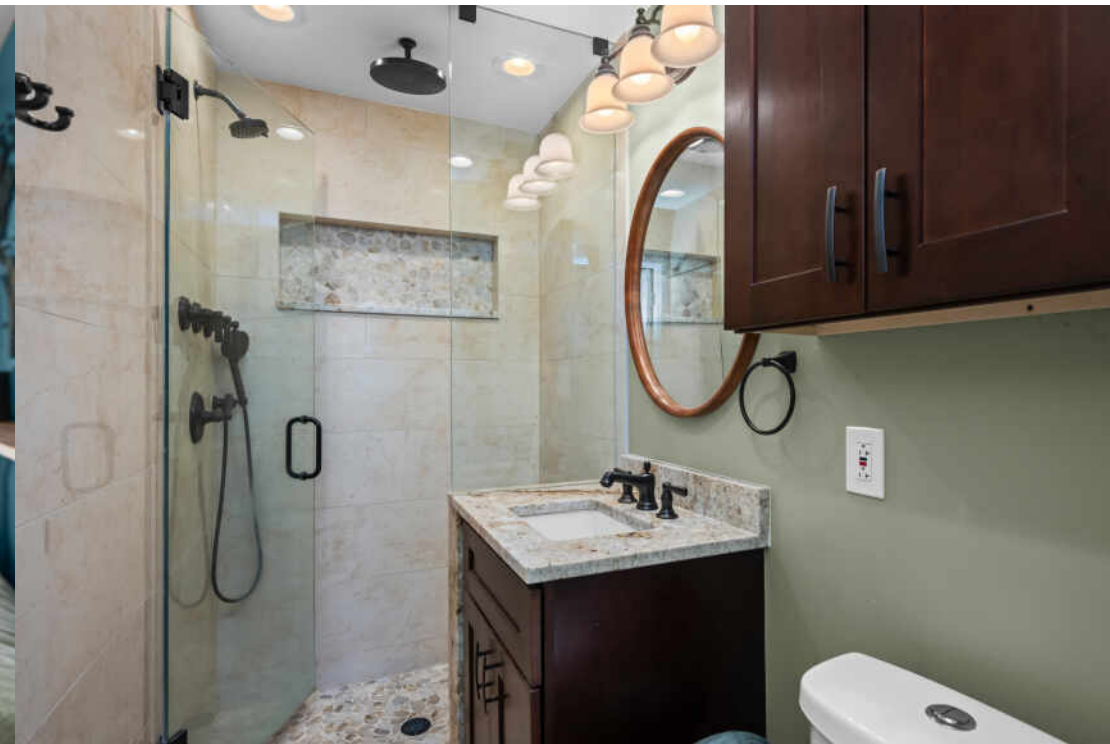
2 BATH

TAXES: \$8,924.27













## WITH ALL THE AMENITIES YOU WOULD EXPECT TO FIND IN LARGER URBAN SETTINGS, **ARLINGTON HEIGHTS** GIVES MOST CITIES A RUN FOR THEIR MONEY

Located 25 miles northwest of Chicago, the community has a vibrant downtown area, theaters, restaurants, shopping, parks, recreation, and two commuter train stations. It's no wonder Arlington Heights tops the list of the highest-populated villages in the country.

Arlington Heights is home to more than 200 restaurants, many situated in its downtown area and offering something for every taste.

The village hosts outdoor festivals, parades, and its ever-popular Frontier Days. Residents have plenty of bike paths, picnic areas, golf courses, lakefront paths, and more to enjoy.

Commuting downtown is a convenient 30-minute trip with two Metra stations offering direct access to Chicago's Ogilvie Station. The village also has direct access to I-90 as well as Route 53, which links to several interstates.





NOTES



## MARIA DELBOCCIO & DIANE MARCHETTI

847.495.2510

MARIA@THEDMREGROUP.COM

THEDMREGROUP.COM

**DELBOCCIO | MARCHETTI**  
**GROUP**

---

**@properties®**

**CHRISTIE'S**  
INTERNATIONAL REAL ESTATE