

410 W MAHOGANY COURT #305  
PALATINE

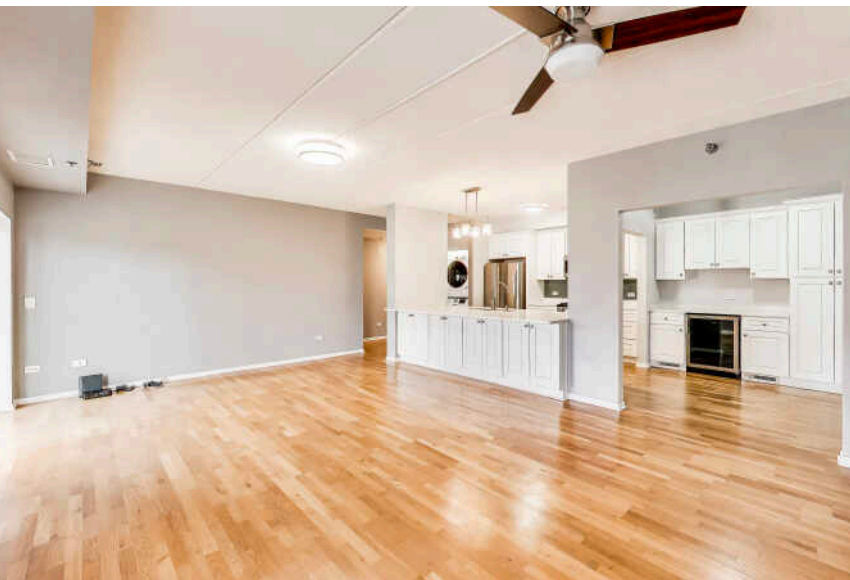
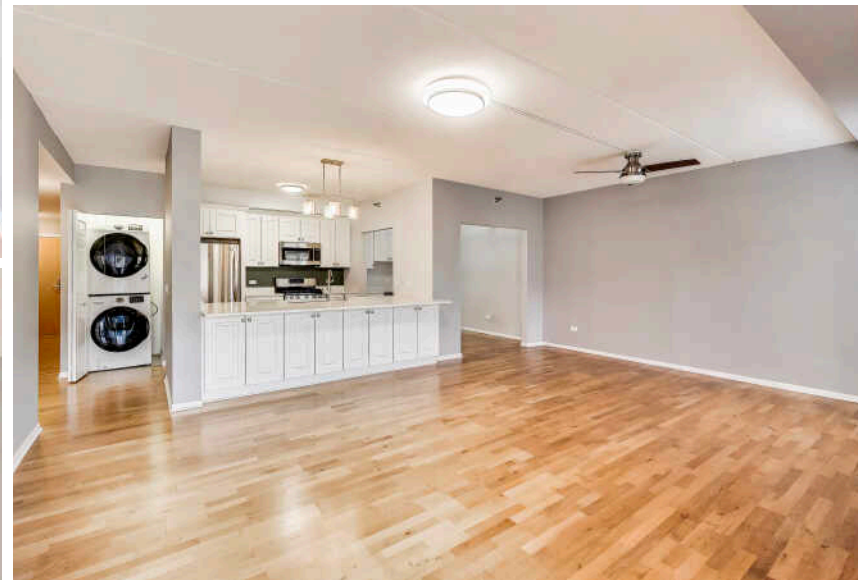




**LIGHT AND BRIGHT, RENOVATED 1 BEDROOM  
WITH 1 FULL AND 1 HALF BATHROOM IN  
DESIRABLE GROVES OF PALATINE.**

Enjoy elegant cooking space with quartz counters on an oversized kitchen island. Bright white, custom cabinetry features an abundance of storage in both the kitchen and office space. New stainless steel appliances and wine fridge complete the space. A large open concept living and dining room leads you to your own private balcony overlooking the lush courtyard provides the perfect spot for grilling out and lounging in fresh air. A spacious en-suite bedroom offers a custom wardrobe, two closets, and newer plush carpeting with upgraded padding. A renovated bathroom offers more custom cabinetry, quartz countertops, and oversized shower and tub combination. Additional upgrades include brand new full-sized washer and dryer, LED lighting and fans throughout, faucets, outlets, plumbing fixtures and brand-new AC (2025). One indoor garage spot and a storage unit included. Additional exterior parking for guests and residents and rolling green landscape make this the perfect downtown Palatine home! Short distance to the Metra, dining, shopping and more.

**1 BEDROOM  
1.1 BATH  
TAXES: \$5,046  
ASSESSMENTS: \$465 / MONTH**





1122 sq ft + 76 sq ft BALCONY



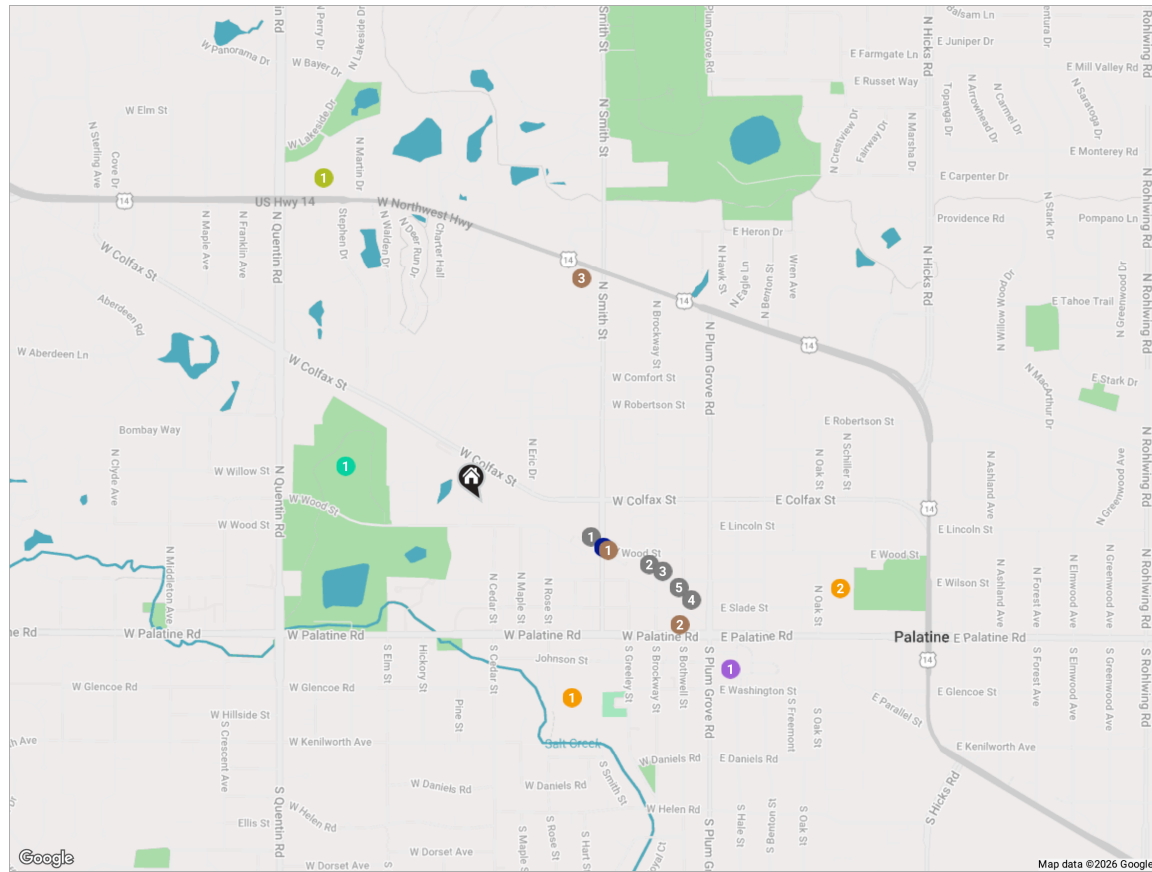
## THE VILLAGE OF **PALATINE** HAS MASTERED THE ART OF BALANCE.

The growing community has a healthy mix of residents who enjoy its friendly suburban lifestyle and businesses that fuel the local economy.

The village embraces growth to support a wealth of amenities and services. The Palatine Park District has 28 parks, an 18-hole golf course, and a variety of classes from fitness and sports to arts and crafts. Palatine offers scenic views with winding trails, beautiful residential areas, and nearby Deer Grove Forest Preserve.

Palatine's downtown business district is both charming and self-sufficient for residents. Restaurants include a mix of local favorites from classic eateries to upscale breweries, as well as a variety of local bars. The village hosts several street festivals and a popular farmers market.

Commuters have access to the Chicago Loop with the Palatine Metra station and I-90. The nearby Chicago Executive Airport offers private and corporate aircraft services.



**RESTAURANTS**

- 1 **Durty Nellie's Gastropub & Concert Hub**  
180 NORTH SMITH STREET, 0.3 MI
- 2 **Emmett's Brewing Company**  
110 NORTH BROCKWAY STREET, 0.4 MI
- 3 **Tap House Grill**  
56 WEST WILSON STREET, 0.4 MI
- 4 **Gianni's Cafe**  
18 WEST STATION STREET, 0.5 MI

- 5 **Lamplighter Inn Tavern & Grille**  
60 NORTH BOTHWELL STREET, 0.5 MI

**COFFEE**

- 1 **Conscious Cup Coffee Roasters - Palatine**  
137 WEST WOOD STREET, 0.3 MI
- 2 **Two Libras Café**  
10 NORTH BOTHWELL STREET, 0.5 MI
- 3 **Dunkin'**  
231 WEST NORTHWEST HIGHWAY, 0.6 MI

**GROCERY**

- 1 **Jewel-Osco**  
45 SOUTH PLUM GROVE ROAD, 0.7 MI

**GYM**

- 1 **Anytime Fitness**  
819 NORTH QUENTIN ROAD, 0.8 MI

**SCHOOLS**

- 1 **Stuart R. Paddock School**  
225 WEST WASHINGTON STREET, 0.5 MI

- 2 **Gray M. Sanborn Elementary School**  
101 NORTH OAK STREET, 0.9 MI

**TRANSIT**

- 1 **Palatine METRA - UNION PACIFIC NORTHWEST**  
0.3 MI

**PARKS**

- 1 **Palatine Prairie**  
745 WEST WOOD STREET, 0.3 MI

NOTES

---



---



---



---



---



---



---



---



---



---



## CARRIE GOODMAN

(847) 542-9445

CARRIEGOODMAN@ATPROPERTIES.COM

WWW.CARRIEGOODMANHOMES.COM

CARRIE GOODMAN

**BETTER  
T  GETHER  
G  RUP**

 **properties**<sup>®</sup>

**CHRISTIE'S**  
INTERNATIONAL REAL ESTATE