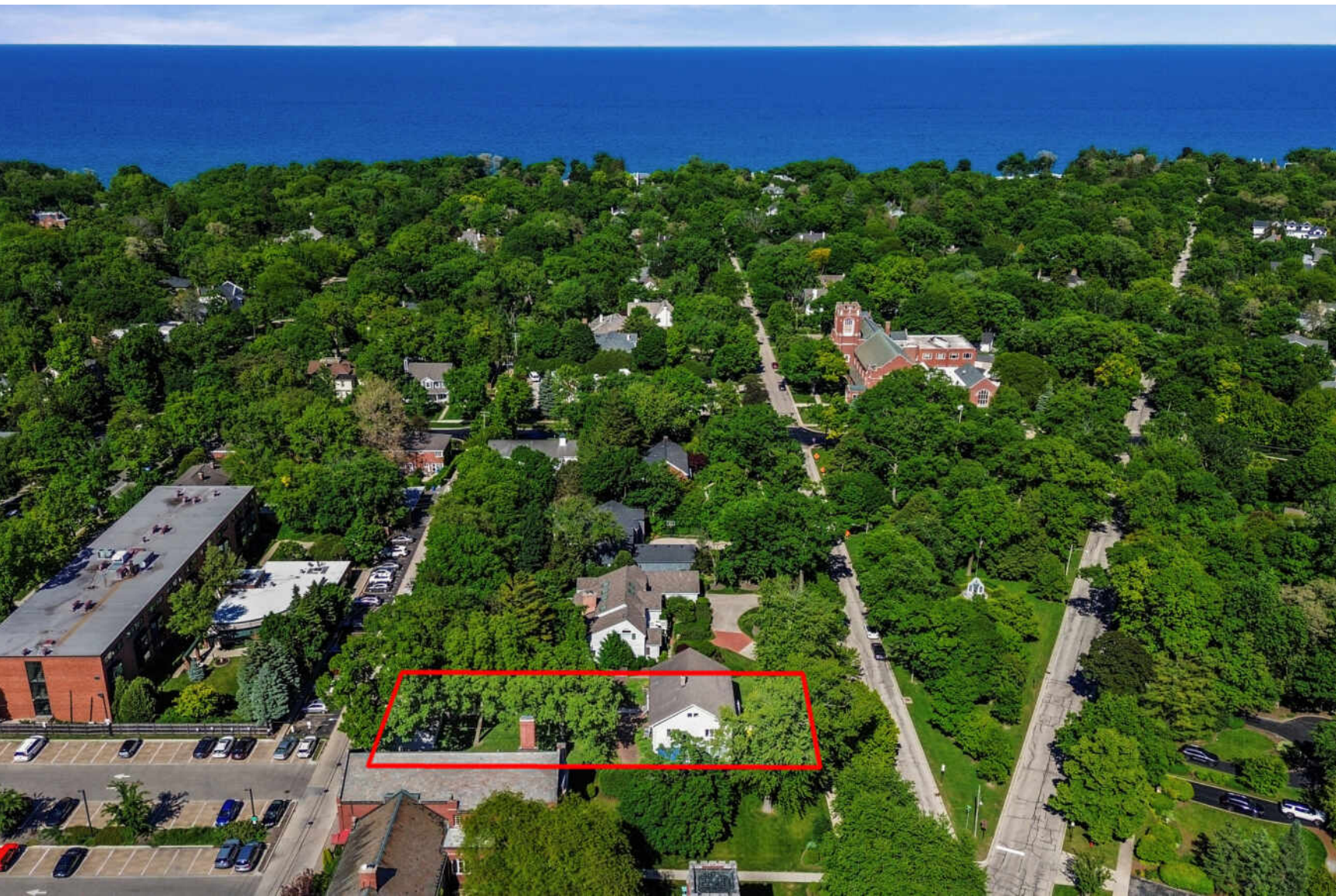


411 LAUREL AVENUE
HIGHLAND PARK



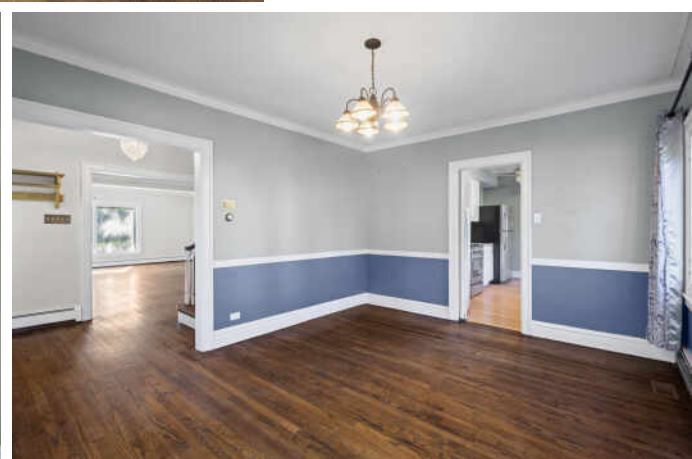
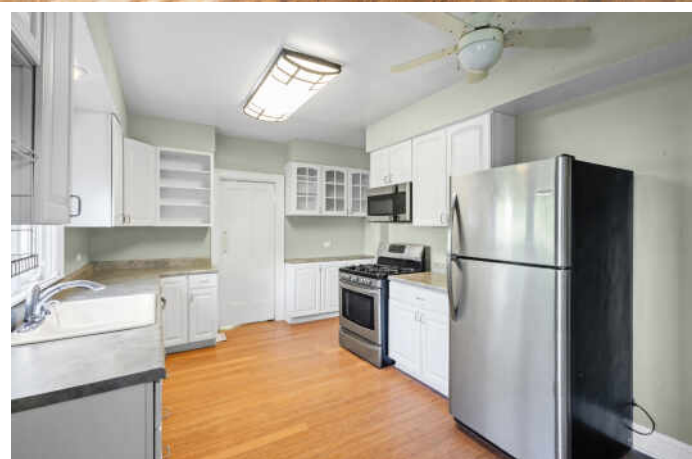
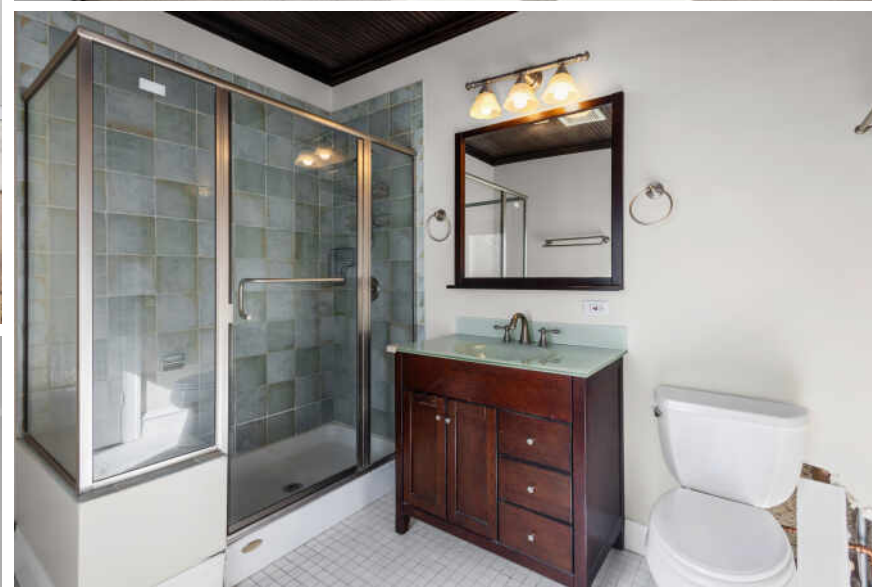


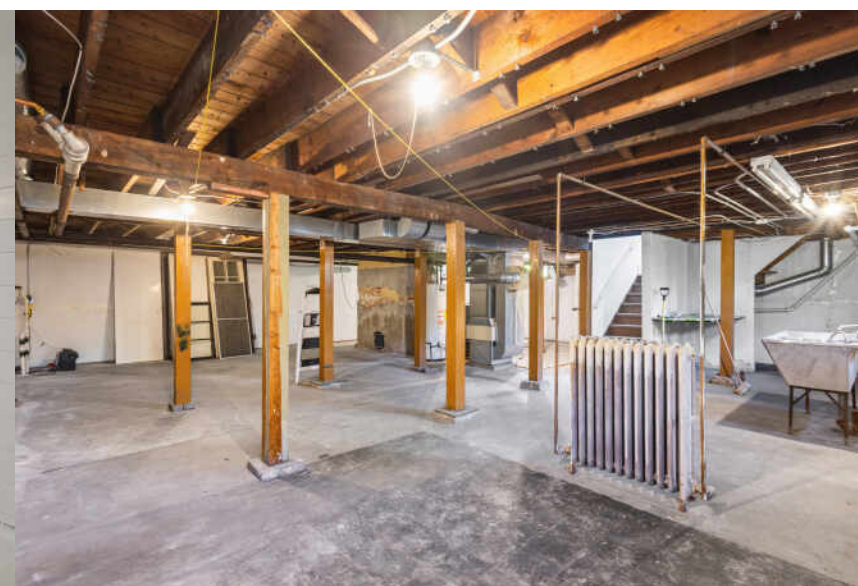
4 BEDROOM
2.1 BATH

AMAZING IN TOWN, WALK TO EVERYWHERE,
CENTRAL AND EAST HIGHLAND PARK LOCATION!
BRING THIS GRAND 1920'S HOME TO IT'S
ORIGINAL SPLENDOR OR BUILD NEW!

- This 4 bedroom plus 2.5 bathroom home has great bones and old world charm
- Large bedrooms
- Hardwood floors throughout
- 3rd story walk up attic area
- Unfinished basement
- Huge yard
- Detached 2 car garage
- The lot is 75 wide by 200 deep, 15,000 square feet. It is zoned R-5, residential, single family
- A new construction home up to 4,500 square feet can be built on the property, per the building department of Highland Park
- Property is sold As-Is









YOU HAD ME AT RAVINIA – YET THERE’S SO MUCH MORE TO LOVE ABOUT **HIGHLAND PARK.**

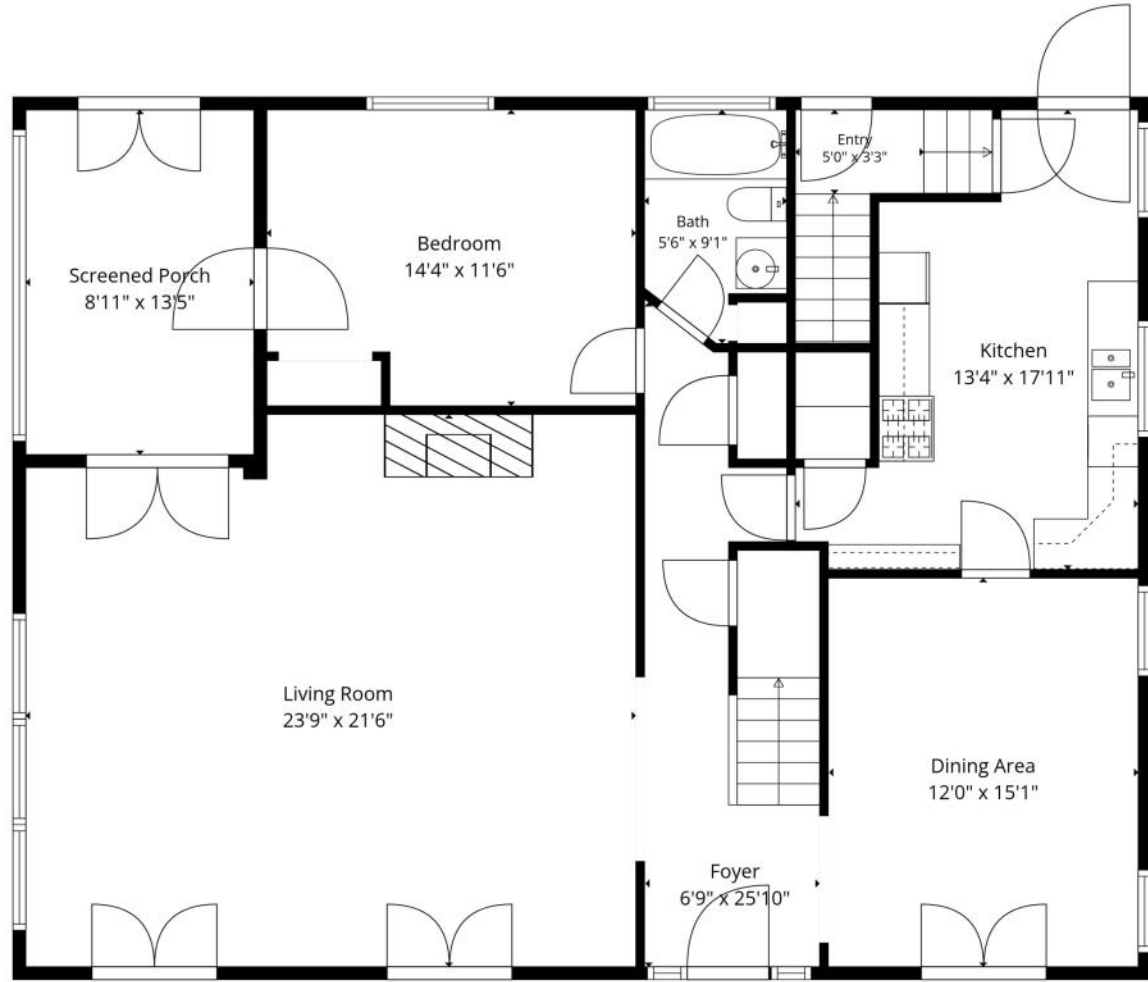
Located 23 miles north of downtown Chicago, Highland Park is known for its vibrant downtown business district, abundant recreational facilities, and world-class amenities.

The city is home to several landmarks, including homes designed by Frank Lloyd Wright. Highland Park also created the first community land trust in Illinois to develop and preserve high-quality affordable housing for residents.

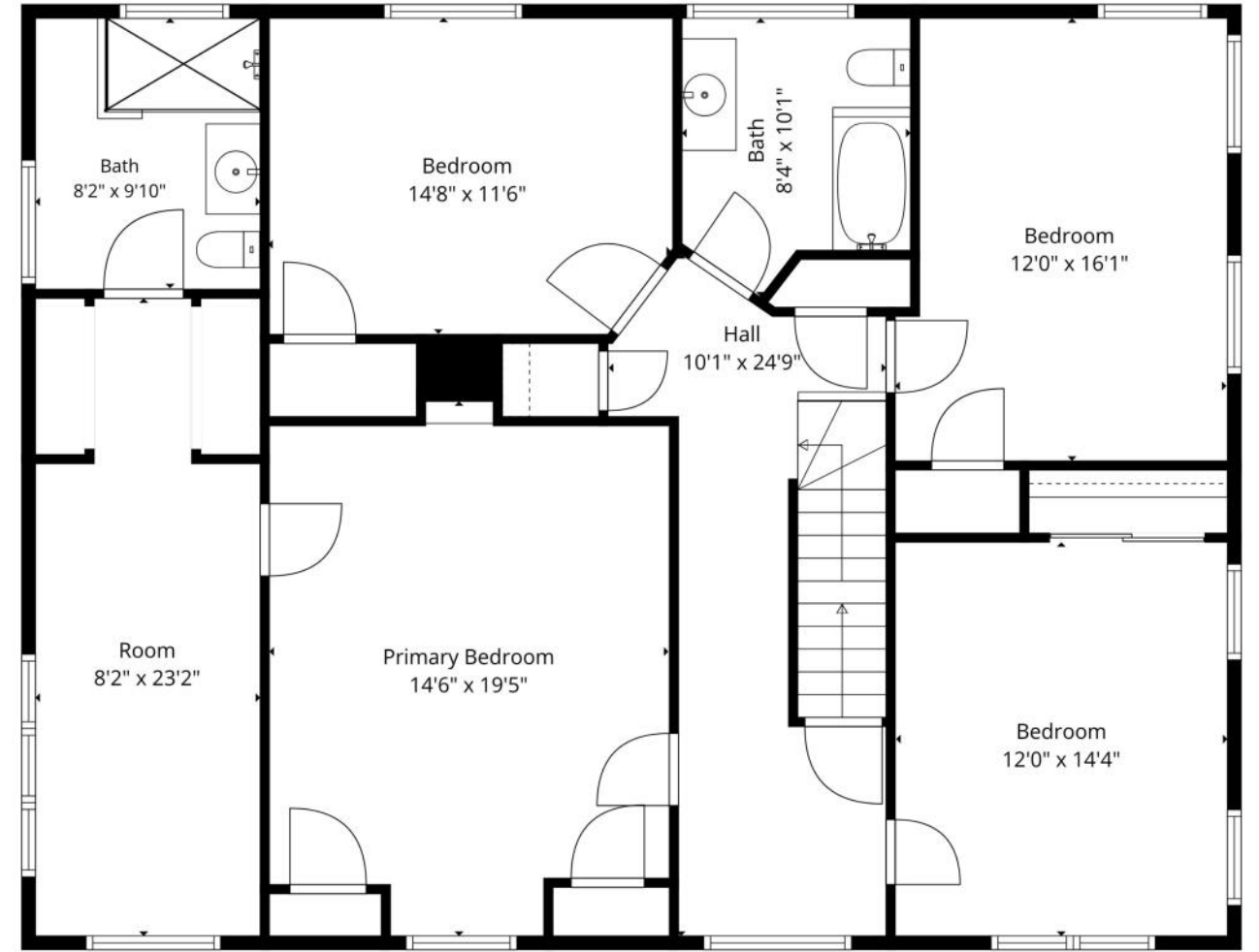
High-end homes in Highland Park range from custom lakefront mansions to multi-million-dollar contemporary estates. Mid-century moderns and in-town bungalows are plentiful, while a number of luxury condominiums offer maintenance-free living close to downtown shops, restaurants, and commuter train stations.

Residents enjoy two public beaches and the North Shore Yacht Club, a not-for-profit membership organization for sailors, kayakers, power boaters, and stand-up paddle boarders. Downtown Highland Park thrives year-round thanks to an eclectic mix of businesses including local restaurants, national retailers, and upscale boutiques.

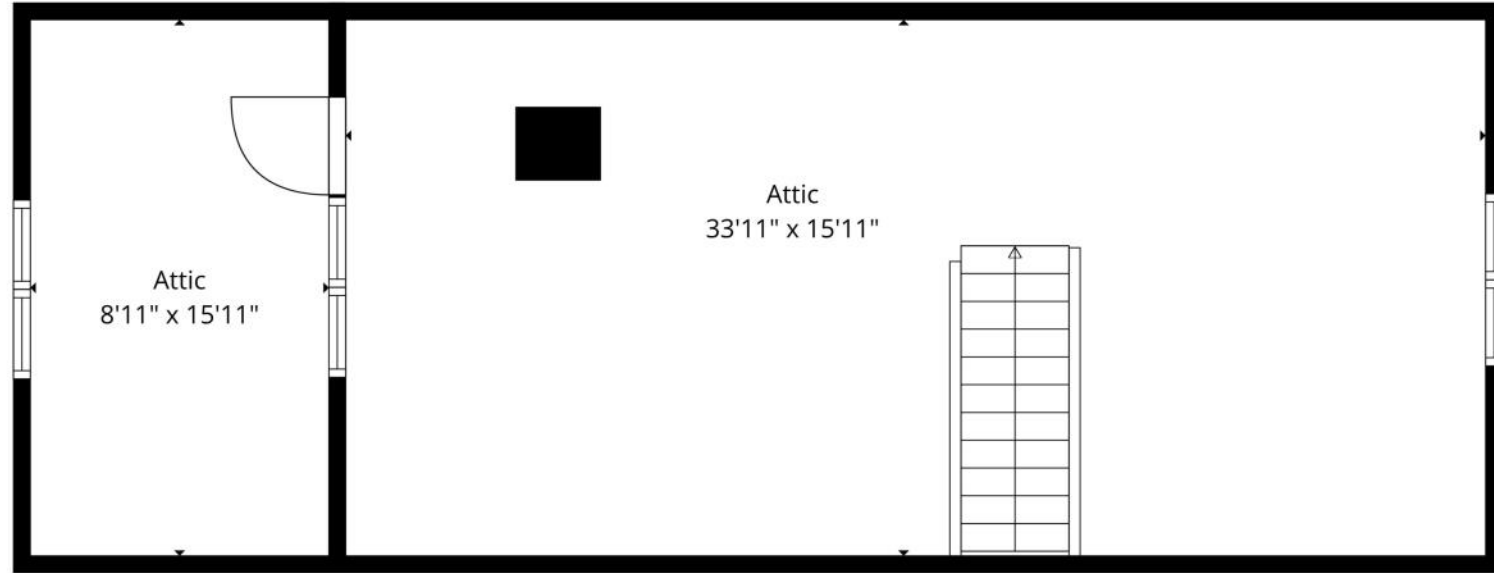
Highland Park shines brightest in the summertime, when the sprawling outdoor Ravinia Festival welcomes the Chicago Symphony Orchestra and a diverse lineup of popular musicians. Ravinia attracts concert-goers from near and far, including locals and city-dwellers who can hop on the Metra train that conveniently stops at the festival gates.



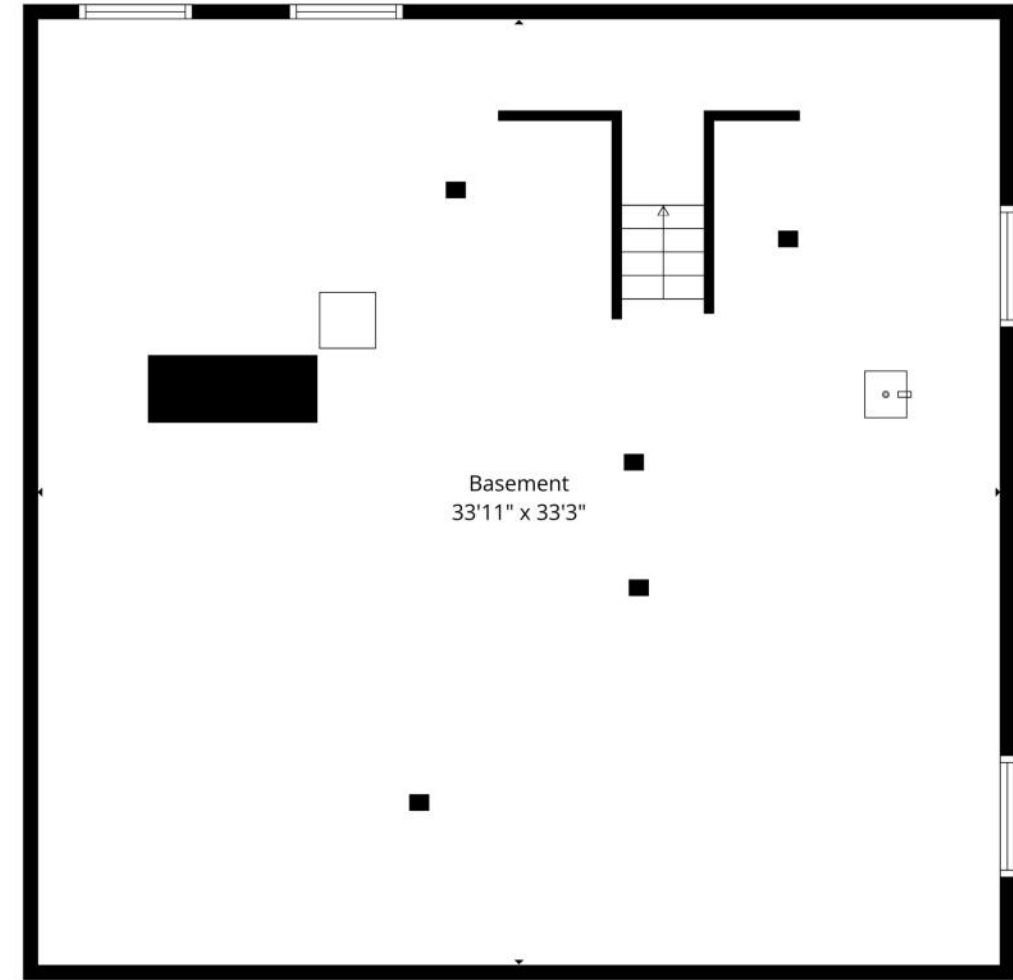
Floor Plan Created By Cubicasa App. Measurements Deemed Highly Reliable But Not Guaranteed.



Floor Plan Created By Cubicasa App. Measurements Deemed Highly Reliable But Not Guaranteed.



Floor Plan Created By Cubicasa App. Measurements Deemed Highly Reliable But Not Guaranteed.



Floor Plan Created By Cubicasa App. Measurements Deemed Highly Reliable But Not Guaranteed.



CORY ALBIANI

1 3122867065

847-432-0700

CORYALBIANI@ATPROPERTIES.COM