

412 E 89TH PLACE
CHATHAM



@properties®

CHRISTIE'S
INTERNATIONAL REAL ESTATE



KEYE HIGH ESTATE IMAGERY

ROOM DIMENSIONS

LIVING ROOM : 20' × 11'

FAMILY ROOM : 24' × 18'

KITCHEN : 18' × 10'

PRIMARY BEDROOM : 12' × 11'

SECOND BEDROOM : 11' × 12'

THIRD BEDROOM : 10' × 11'

FOURTH BEDROOM : 11' × 12'

FIFTH BEDROOM : 11' × 10'

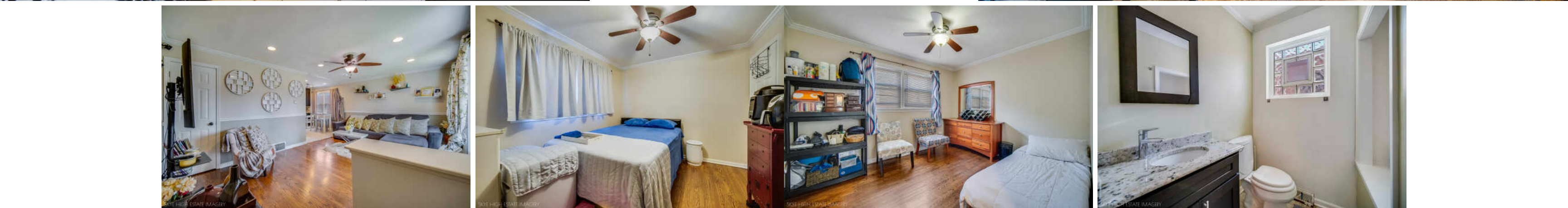
5 BEDROOM

2.1 BATH

TAXES: \$1,849

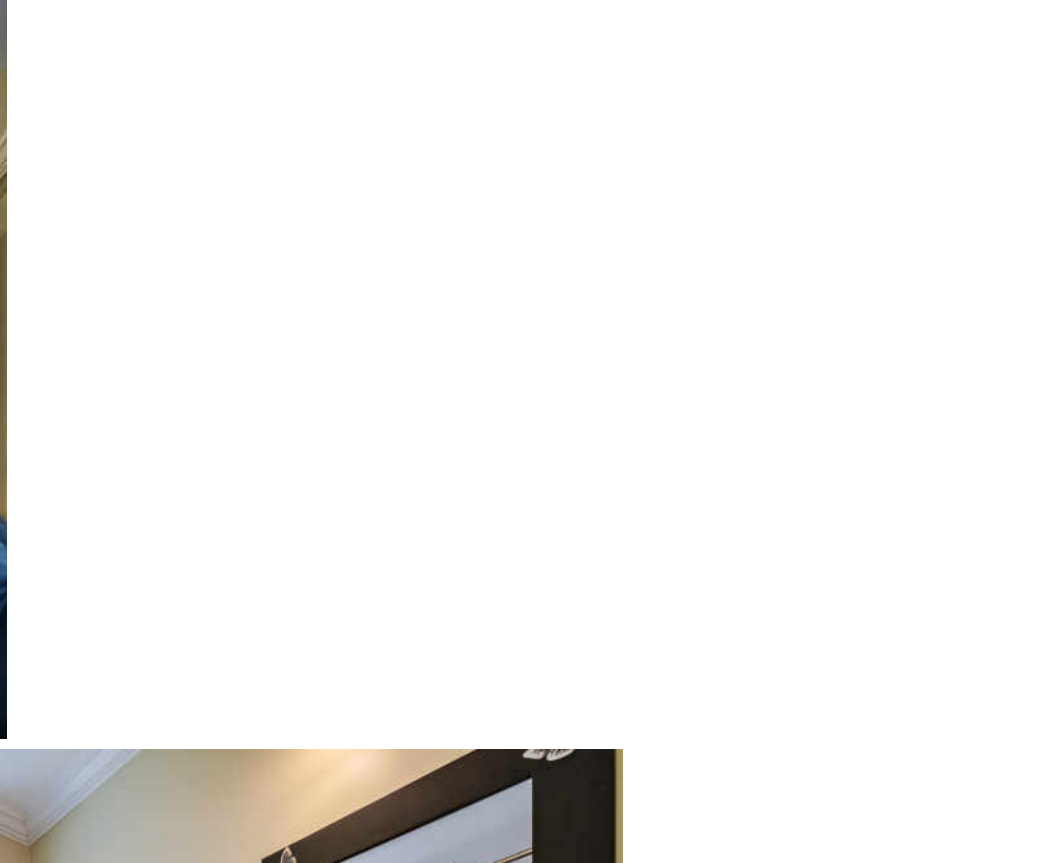
BEAUTIFUL 5 BED 2.1 BATH CHATAM HOME

Meticulously maintained brick home nestled on a quiet, tree-lined street in Chatham! This spacious residence offers 5 bedrooms and 2.1 bathrooms, providing plenty of room for comfortable living and entertaining. The main level features rich, refinished hardwood floors throughout, 3 generously sized bedrooms, and 1.1 baths, including a convenient private half bath in the primary bedroom. The heart of the home is the beautifully updated kitchen, showcasing custom cherrywood cabinetry, thick granite countertops, and stainless steel appliances. The fully finished basement expands the living space with a large family room, two additional bedrooms, a full bathroom, and a dedicated laundry area-ideal for guests, a home office, or multigenerational living. Recent improvements include a new roof, and all major systems have been well maintained and are in excellent working order. Step outside to enjoy the beautifully landscaped backyard, perfect for gardening, relaxing, or entertaining family and friends. Conveniently located near expressways, public transportation, shopping, dining, and neighborhood amenities, this move-in-ready home offers the perfect combination of space, comfort, and location. Don't miss this exceptional opportunity!

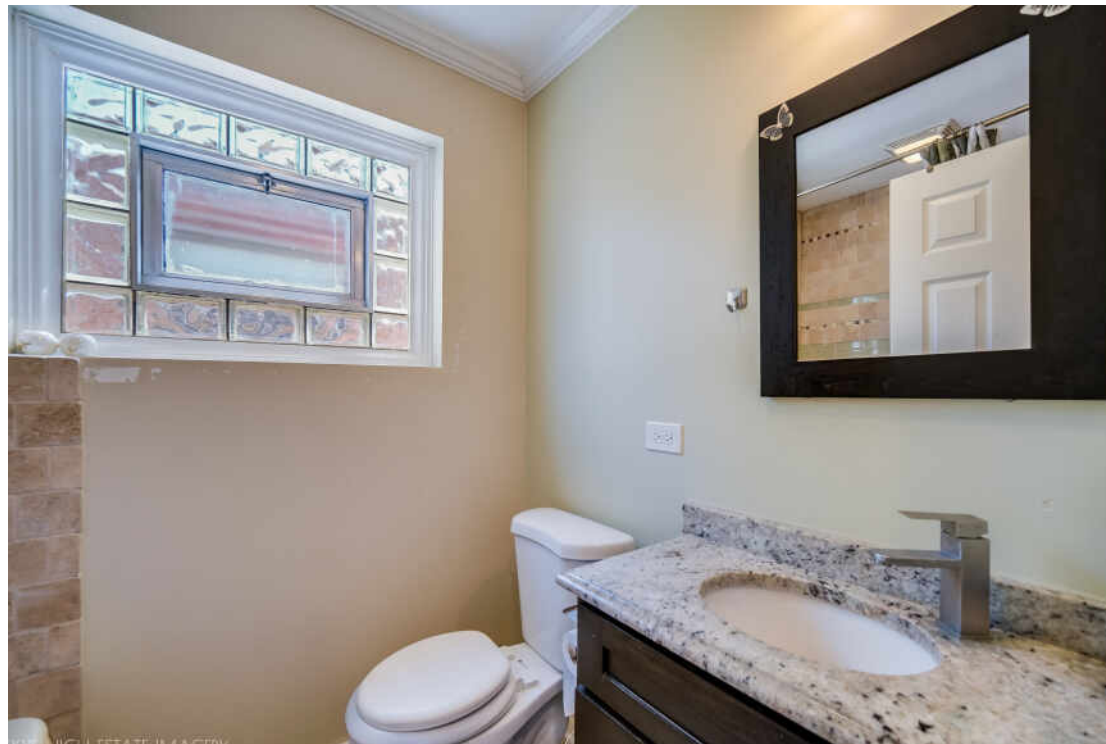




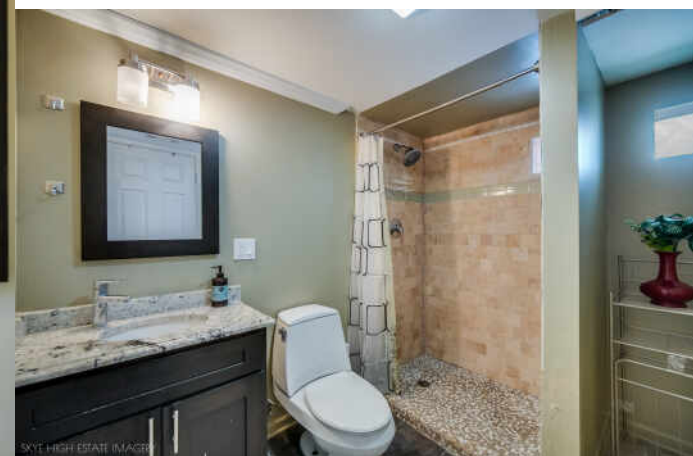
SKYE HIGH ESTATE IMAGERY



SKYE HIGH ESTATE IMAGERY



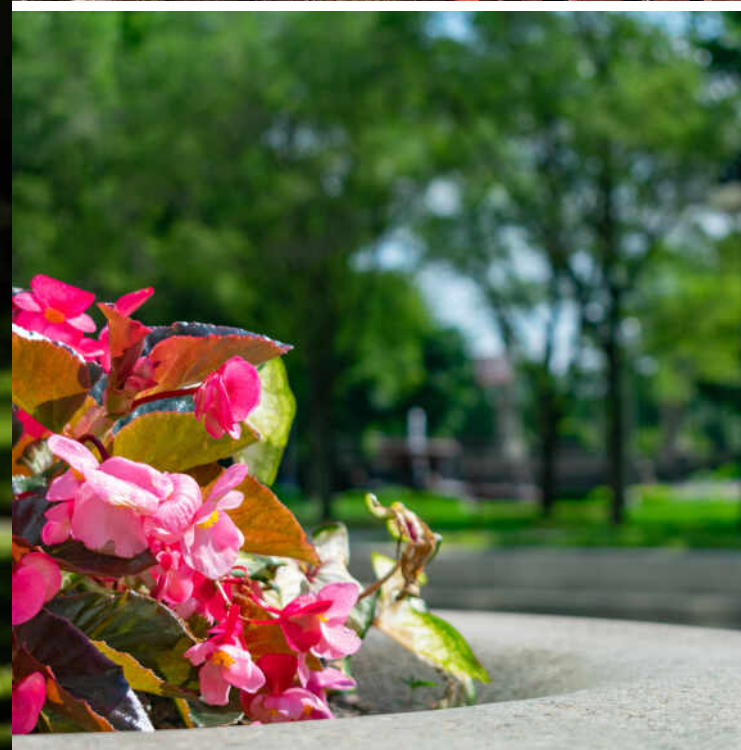
SKYE HIGH ESTATE IMAGERY



SKYE HIGH ESTATE IMAGERY



SKYE HIGH ESTATE IMAGERY

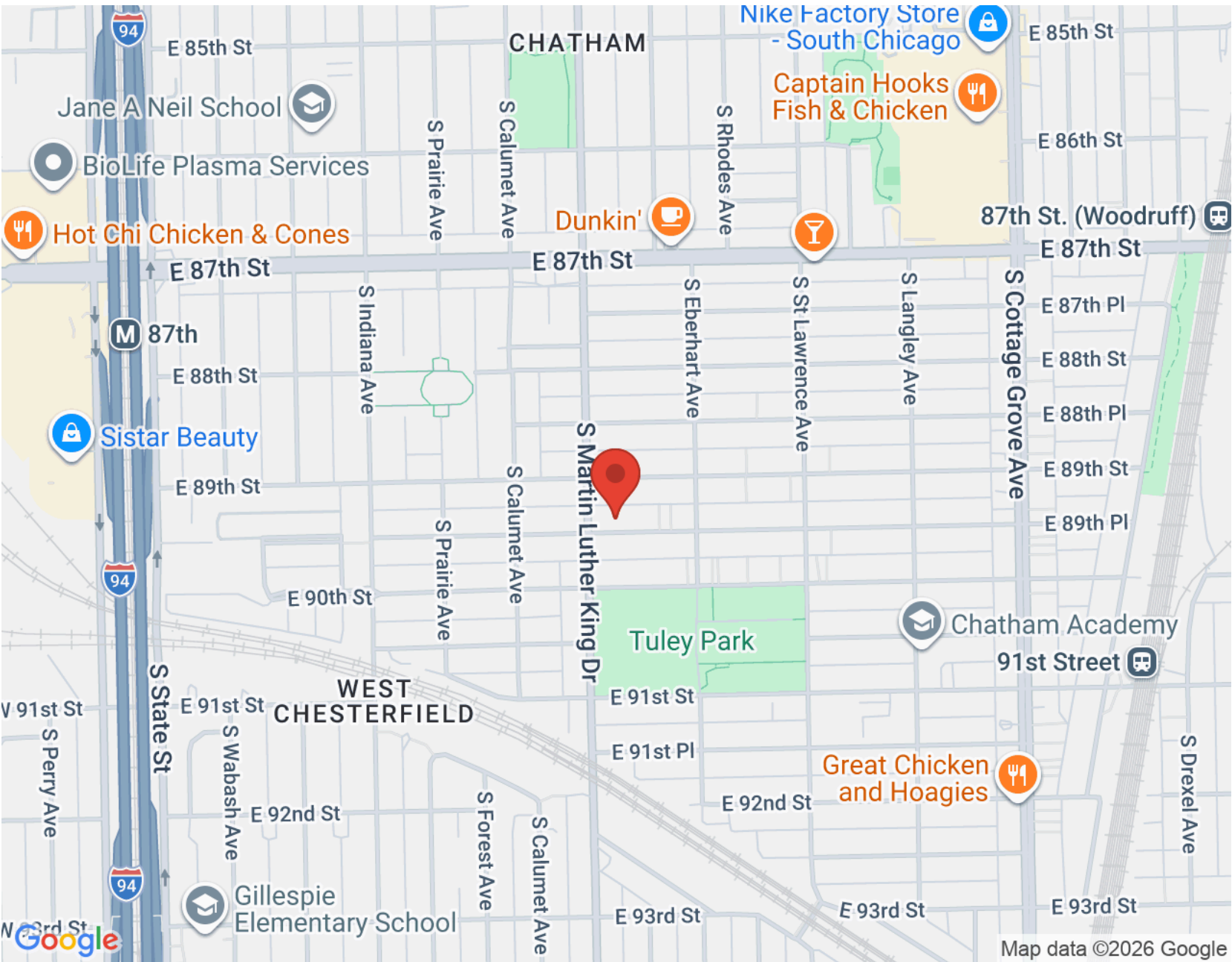


A WELL-ESTABLISHED NEIGHBORHOOD THAT HAS EVOLVED OVER THE YEARS, **CHATHAM** IS HOME TO MANY RESIDENTS THAT HAVE LIVED IN THE COMMUNITY FOR MUCH OF THEIR LIVES.

Avalon Highlands, Chesterfield, and Chatham Fields are three of the sub-areas that comprise this tight-knit community. Listed on the National Register of Historic Places, the Garden Homes Historic District and West Chatham Bungalow Historic District are sections of the community with unique homes built in the early 1900s. Well maintained over the years, the Garden Homes are brick cottages that were built on unusually large lots of land for the time, while the Bungalow District features similar designs, giving the neighborhood a uniform appearance. There are also plenty of renovated townhome and condominium options for those in search of less space.

The Greater Chatham Initiative was launched in 2016 as a way to foster neighborhood growth and business development. This has enabled the community to enhance local retail, schools, and parks, and continue to attract new residents. The neighborhood also takes pride in its restaurants that offer a variety of cuisine choices and are often featured at community events.

Whether enjoying the quiet beauty of the surrounding parks and architecture or checking out live music at one of the local lounges, this community continues to progress while maintaining its celebrated roots.



NOTES _____



LISA M. FOSTER

(312) 804-3465

LMF@ATPROPERTIES.COM

WWW.ATPROPERTIES.COM/AGENTS/LISAFOSTER

