

**415 CADENCE CIRCLE**  
LAKE GENEVA







**ROOM DIMENSIONS**

DINING ROOM : 11' × 11'

KITCHEN : 12' × 11'

PRIMARY BEDROOM : 19' × 12'

SECOND BEDROOM : 12' × 10'

**2 BEDROOM**

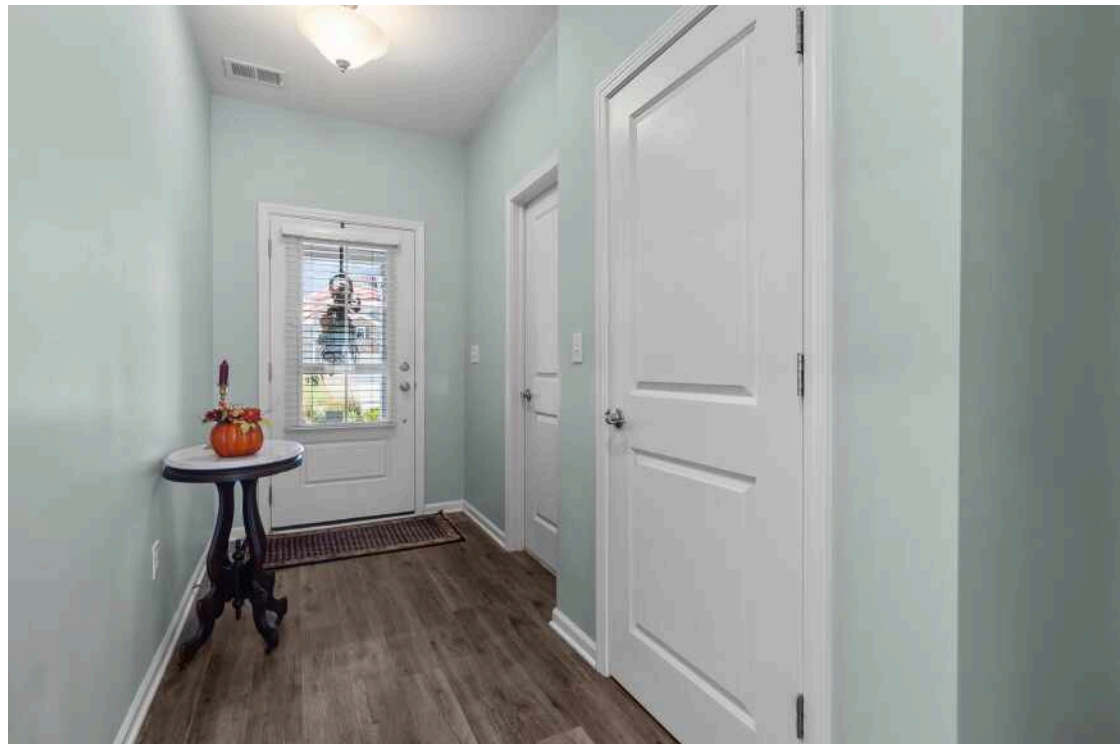
**2 BATH**

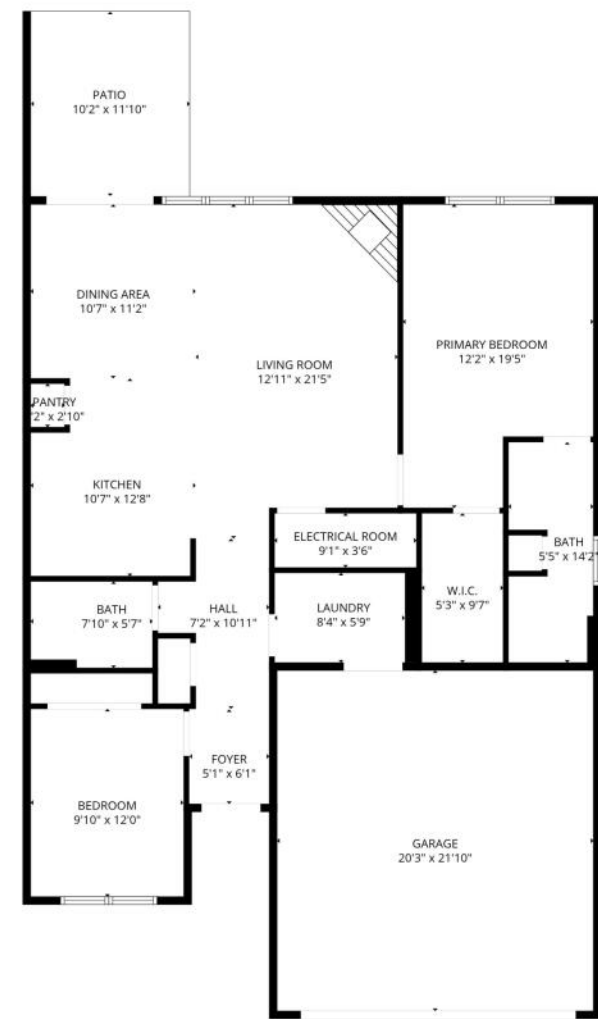
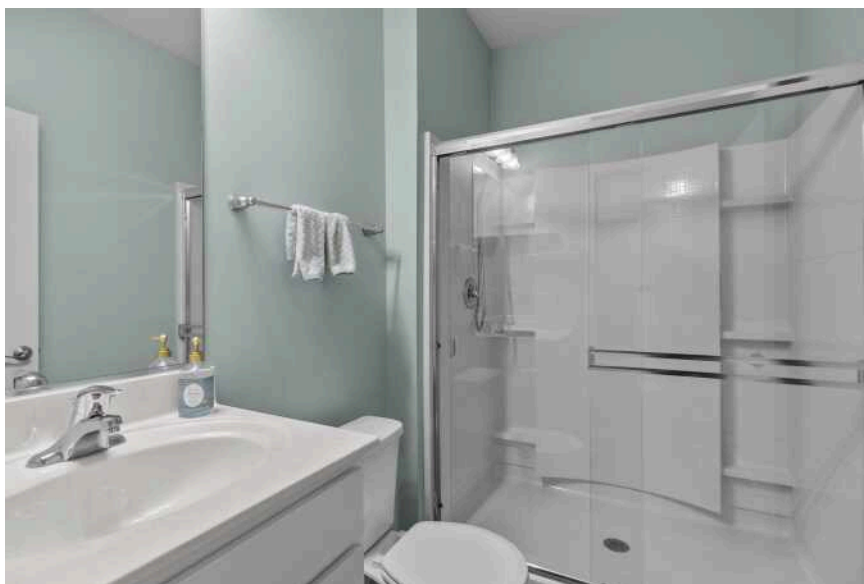
**TAXES: 4582**

**ASSESSMENTS: 250**

From every angle you'll find this 2-bedroom 2 bath townhouse condominium fascinating. Amenities include an open floor plan, front porch, fireplace, and two car attached garage. Located on a corner lot in Symphony Bay with a community club house with an outdoor pool and fitness center and second lake club house on Lake Geneva.







FLOOR PLAN CREATED BY CUBICASA APP. MEASUREMENTS DEEMED HIGHLY RELIABLE BUT NOT GUARANTEED.





## HAVE YOU EVER GONE ON VACATION, FALLEN IN LOVE WITH THE AREA AND DECIDED YOU'RE NEVER LEAVING? WELCOME TO **LAKE GENEVA.**

The picturesque city on the eastern shore of Geneva Lake attracts visitors from Illinois and beyond with its natural beauty, wonderfully-preserved buildings, and, of course, Geneva Lake.

Whether you're looking for a great getaway or a place to call home, Lake Geneva checks all the boxes: Boating, golfing, exploring, hiking, lake cruises, fine dining, charming shops, nature preserves...the list goes on. Locals and visitors also enjoy the many parks in the area, including Library Park, which offers access to a 26-mile lakefront path that leads to Big Foot Beach State Park, Fontana, and Williams Bay. Meanwhile, Flat Iron Park draws crowds with summer events like Art in the Park, Taste of Lake Geneva, and Lake Geneva Jaycees Venetian Festival. Winterfest is another popular event, featuring snow sculpting competitions, ice fishing, food tastings, and more.

Homebuyers and vacationers have a variety of properties to choose from, with the community boasting everything from cozy cabins and cottages to lakefront homes and Victorian mansions.

Lake Geneva is located 75 miles from downtown Chicago and 45 miles from Milwaukee.





NOTES \_\_\_\_\_

\_\_\_\_\_

\_\_\_\_\_

\_\_\_\_\_

\_\_\_\_\_

\_\_\_\_\_

\_\_\_\_\_

\_\_\_\_\_

\_\_\_\_\_

\_\_\_\_\_

\_\_\_\_\_

\_\_\_\_\_



## DALE G HIBBARD

1 2627454847

2623480200

DHIBBARD@ATPROPERTIES.COM



All specifications, features, designs, price, assessments, taxes and materials are subject to change without notice. Depicted floor plans and architectural renderings are only an artist's impression.

