

415 S WELLS ST #804
LAKE GENEVA





ROOM DIMENSIONS

DINING ROOM : 11' × 15'

KITCHEN : 11' × 12'

PRIMARY BEDROOM : 10' × 14'

SECOND BEDROOM : 10' × 11'

SUN ROOM/4 SEASON ROOM : 18' × 11'

LAUNDRY : 10' × 6'

2 BEDROOM

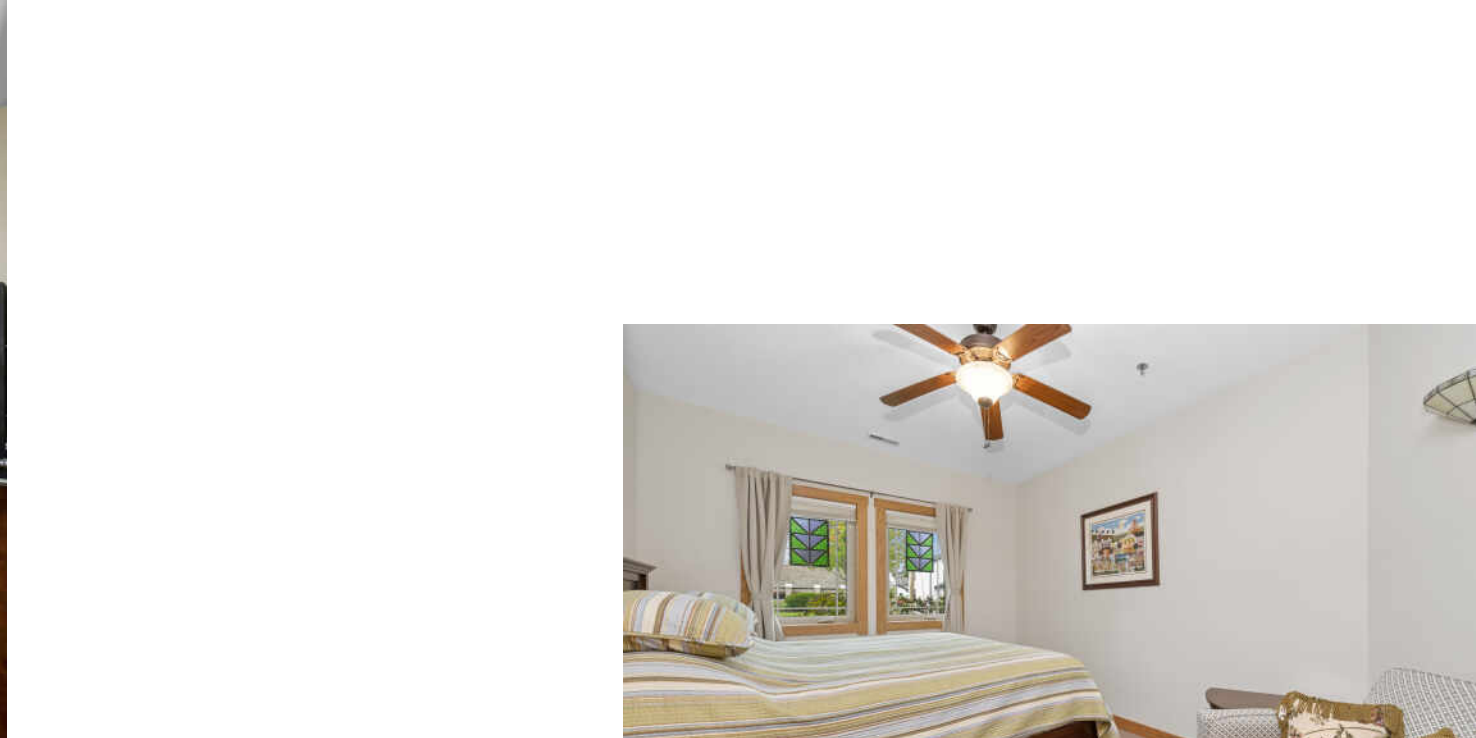
2 BATH

TAXES: \$5,588

ASSESSMENTS: \$575

Wrightwood is one of the most sought after condominium complex in the area. Located just 2 blocks from the downtown area you are just minutes away from everything Lake Geneva offers. This 2 bedroom 2 bath beautifully appointed open concept unit offers granite countertops throughout, kitchen with breakfast bar, gas fireplace, master with walk in closets and double vanity, whirlpool tub in guest bath, sunroom & in unit laundry room. Unit includes a large storage room and one car heated garage space in lower level. Patio with gas grill is available for outdoor entertaining. Elevator for easy access to all levels. Beautiful gardens and landscaping make this an inviting environment to live full time or as a 2nd home. Wrightwood is the only 55+ community in the area.







HAVE YOU EVER GONE ON VACATION, FALLEN IN LOVE WITH THE AREA AND DECIDED YOU'RE NEVER LEAVING? WELCOME TO **LAKE GENEVA.**

The picturesque city on the eastern shore of Geneva Lake attracts visitors from Illinois and beyond with its natural beauty, wonderfully-preserved buildings, and, of course, Geneva Lake.

Whether you're looking for a great getaway or a place to call home, Lake Geneva checks all the boxes: Boating, golfing, exploring, hiking, lake cruises, fine dining, charming shops, nature preserves...the list goes on. Locals and visitors also enjoy the many parks in the area, including Library Park, which offers access to a 26-mile lakefront path that leads to Big Foot Beach State Park, Fontana, and Williams Bay. Meanwhile, Flat Iron Park draws crowds with summer events like Art in the Park, Taste of Lake Geneva, and Lake Geneva Jaycees Venetian Festival. Winterfest is another popular event, featuring snow sculpting competitions, ice fishing, food tastings, and more.

Homebuyers and vacationers have a variety of properties to choose from, with the community boasting everything from cozy cabins and cottages to lakefront homes and Victorian mansions.

Lake Geneva is located 75 miles from downtown Chicago and 45 miles from Milwaukee.



NOTES _____



CINDY MAHER

(262) 745-5192

262-348-0200

CMAHER@ATPROPERTIES.COM



All specifications, features, designs, price, assessments, taxes and materials are subject to change without notice. Depicted floor plans and architectural renderings are only an artist's impression.

