

416 PARMALEE PLACE
WAUKEGAN





ROOM DIMENSIONS

LIVING ROOM : 14' × 12'

FAMILY ROOM : 12' × 12'

DINING ROOM : 12' × 12'

KITCHEN : 13' × 13'

PRIMARY BEDROOM : 18' × 12'

SECOND BEDROOM : 13' × 13'

THIRD BEDROOM : 12' × 12'

3 BEDROOM

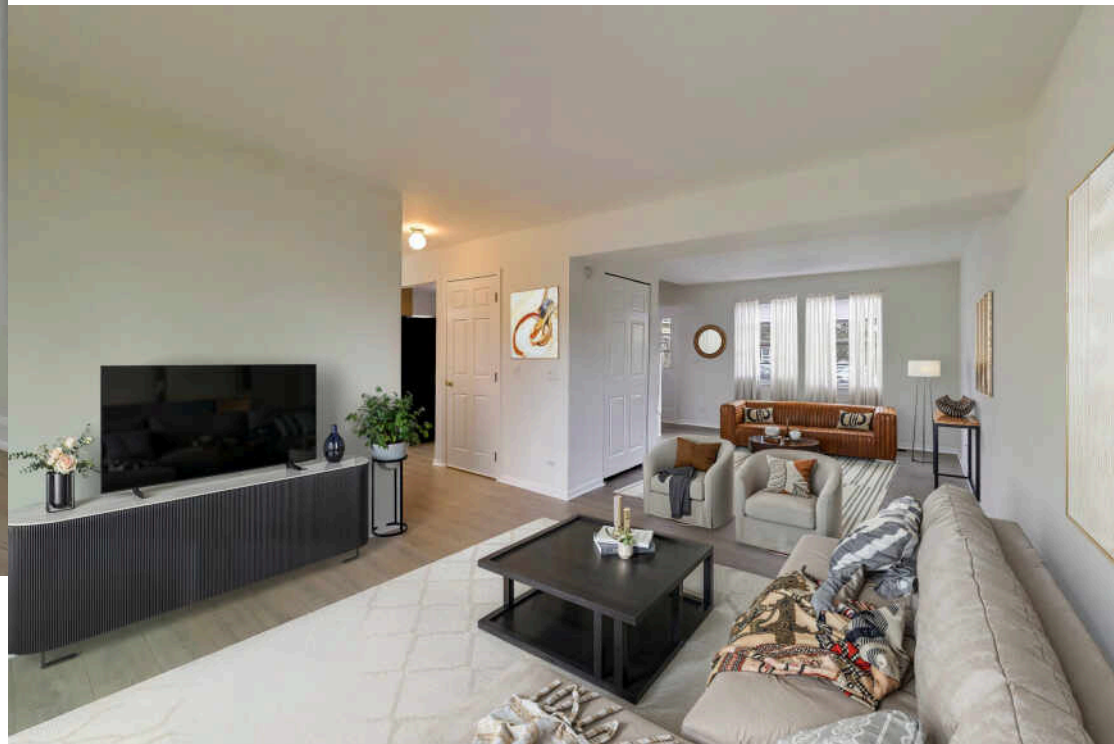
2.1 BATH

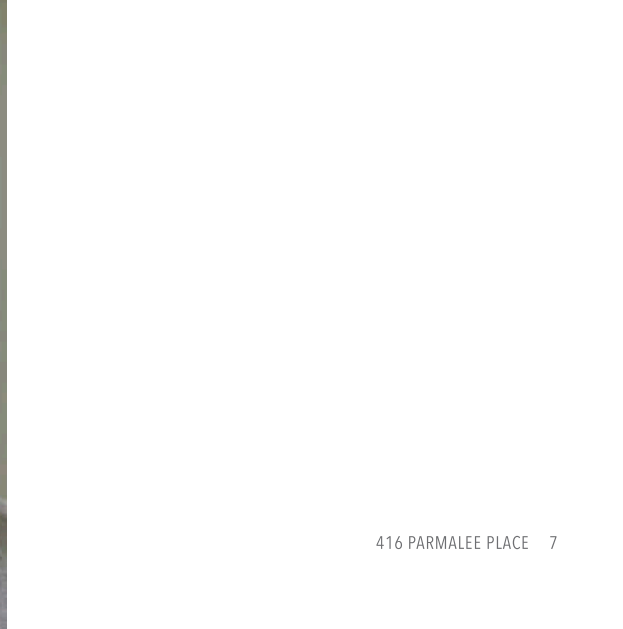
TAXES: \$7,193

FRESH, ROOMY, AND READY TO CALL HOME!

Updated, modern home built for easy living and effortless entertaining - featuring generous room sizes, flexible living areas, and style that works inside and out.

- Brand-new flooring paired with a fresh, modern color palette throughout
- Bright eat-in kitchen for casual meals plus separate dining room for special gatherings
- Expansive living room with versatile space for relaxing and entertaining
- Generously sized bedrooms offering comfort for everyone
- Private primary suite featuring its own bath and two walk-in closets
- Full basement ready for your vision
- Sliding doors lead to a spacious yard with a deck
- Convenient 2-car garage for storage and parking
- Located on Waukegan's north side near schools and established neighborhoods
- Minutes from Bowen Park, Illinois Beach State Park, Waukegan Beach and Glen Flora Country Club







WAUKEGAN'S LAKEFRONT, MARINA, AND BEACHES ARE UNDENIABLY A MAJOR DRAW FOR RESIDENTS; BUT THE CITY IS NOT JUST FUN IN THE SUN.

The community has built a thriving art scene as well.

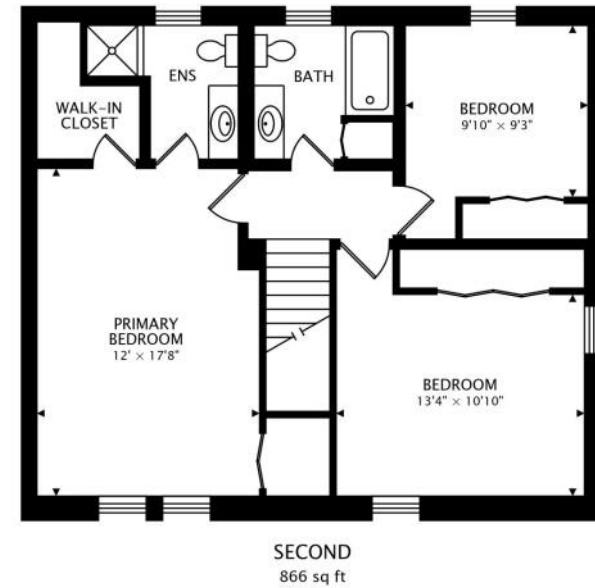
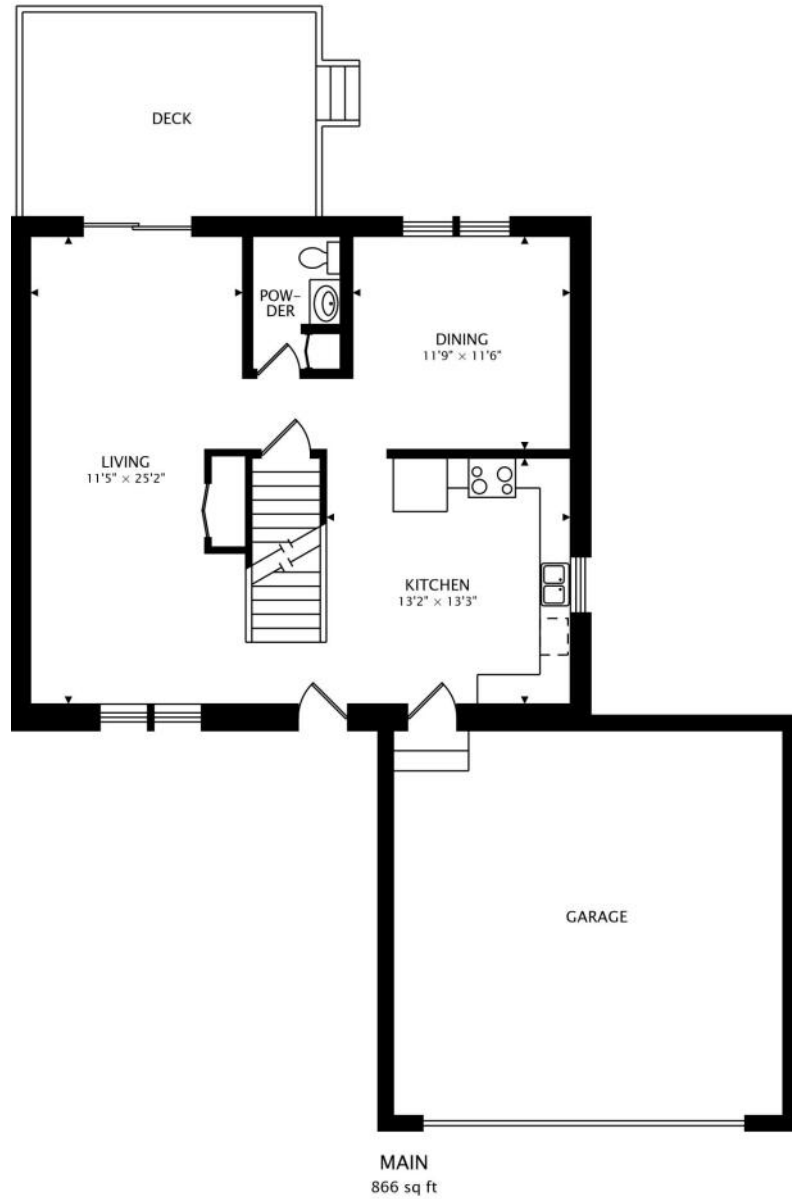
Once a center of shipping and manufacturing, the city has reinvented itself in the post-industrial age.

A massive lakefront revitalization project included an Arts and Theater District and the re-opening of the long-shuttered historic Genesee Performing Arts Theatre. The movie palace was built in 1927, sparing no expense in the hopes of drawing Chicagoans to the community. Despite its opulence and grandeur, competition from multiplex cinemas eventually led to its demise, forcing its closing in 1989. A decade later, the city purchased the building and invested \$23 million to return it to its former grandeur, re-opening in 2004.

Artspace transformed the historic Karcher Hotel, which also had fallen on hard times into a mixed-use arts facility. The facility includes space for artists, arts and nonprofit organizations, as well as retail and gallery space.

The city celebrates with a monthly "ArtWauk" which includes paintings, sculptures, dining, comedy, and music. The community also gets in the holiday spirit with its annual "Holiday Wauk" event.

Waukegan has an airport in addition to its marina and industrial port. The city's Metra station offers commuters convenient service to downtown Chicago via Metra's Union Pacific North Line.



NOTES



SONIA CISTERMINO

REAL ESTATE BROKER, APPRAISER & ADVISOR

847.445.7477

SONIA@ATPROPERTIES.COM

SONIA \$ELL\$

