



41 SHERIDAN ROAD
HIGHLAND PARK



@properties | CHRISTIE'S
INTERNATIONAL REAL ESTATE

LP LUXURY
PORTFOLIO
INTERNATIONAL



CHA MCDANIEL BROKER, MBA

847.769.3889 mobile
847.881.0200 office
chamcdaniel@atproperties.com
www.chamcdaniel.com

CM
Cha McDaniel

41 SHERIDAN ROAD • HIGHLAND PARK





LIVING ROOM WITH FIREPLACE AND BUILT IN CABINETRY

41 SHERIDAN ROAD

ROOM DIMENSIONS

Foyer	8'x8'
Living Room	19'x18'
Dining Room	20'x15'
Kitchen	18'x15'
Primary Bedroom	20'x13'
Second Bedroom	20'x11'
Third Bedroom	9'x8'
Loft	9'x8'
Mudroom	6'x5'
Utility Room	18'x17'
Storage Room	8'x8'

FEATURES

- Renovated David Adler Design originally built as a coach house
- Excellent location near Ravinia Music Festival, Botanic Gardens, downtown Ravinia, Braeside Metra, Rosewood and Glencoe Beaches, and the Green Bay Trail
- Charming courtyard leads to a turreted foyer with a stone floor and bead-board ceiling
- An updated kitchen boasts a vaulted ceiling and raised gas fireplace, custom cabinetry, quartz countertops, a large island with seating for four, an Ilve Majestic stove, custom made ventilation hood, Sub Zero refrigerator, Miele dishwasher, a pantry and garden windows
- The dining room overlooks the Ravines and is a haven for entertaining
- The living room, adorned with custom cabinetry, opens to a private beautifully landscaped courtyard through a wall of French doors
- A first-floor handicap accessible en suite with vaulted ceiling adds convenience with a touch of luxury
- On the second floor two well-scaled bedrooms share an updated Jack-and-Jill bath featuring heated floors, Waterworks soaking tub, separate curbless shower, Kohler fixtures and a double vanity
- Off of the second bedroom, a charming nook overlooks the kitchen
- The basement offers both laundry facilities and a space for exercise
- Outside, three patios command stunning views of The Ravines plus a fourth patio in front



CHA MCDANIEL BROKER, MBA

847.769.3889 mobile
847.881.0200 office

chamcdaniel@atproperties.com
www.chamcdaniel.com





ENTERTAINMENT-SIZE DINING ROOM WITH VIEW OF THE RAVINES



SPECTACULAR KITCHEN WITH LARGE EAT-IN ISLAND AND HIGH-END APPLIANCES



KITCHEN WITH CUSTOM CABINETS AND A FLOOR-TO-CEILING FIREPLACE



FIRST FLOOR HANDICAP ACCESSIBLE BEDROOM



FRIST FLOOR ENSUITE WITH CURBLESS SHOWER



MUDROOM



SECOND FLOOR BEDROOM



SEMI-ENSUITE

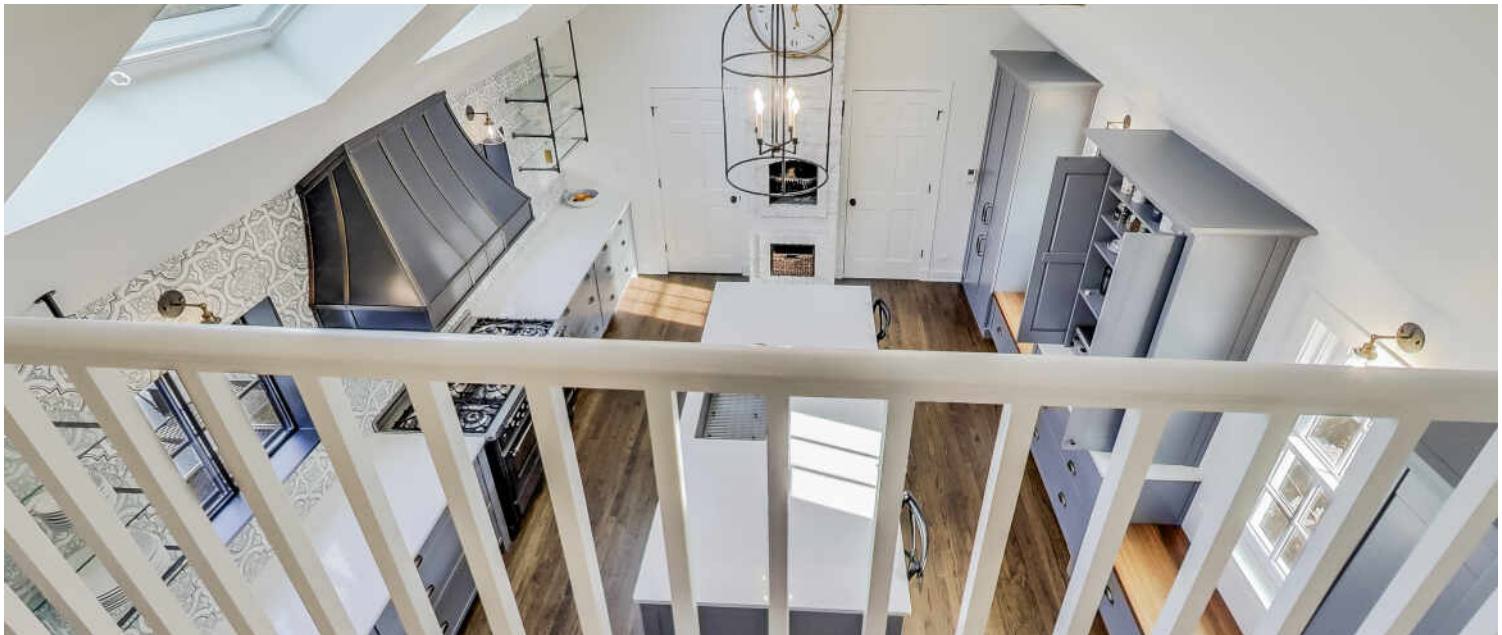




SECOND FLOOR BEDROOM

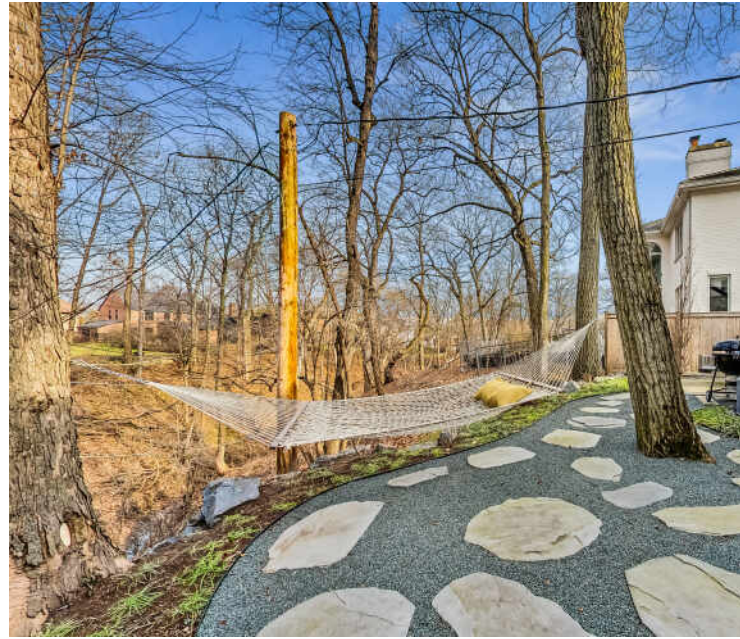


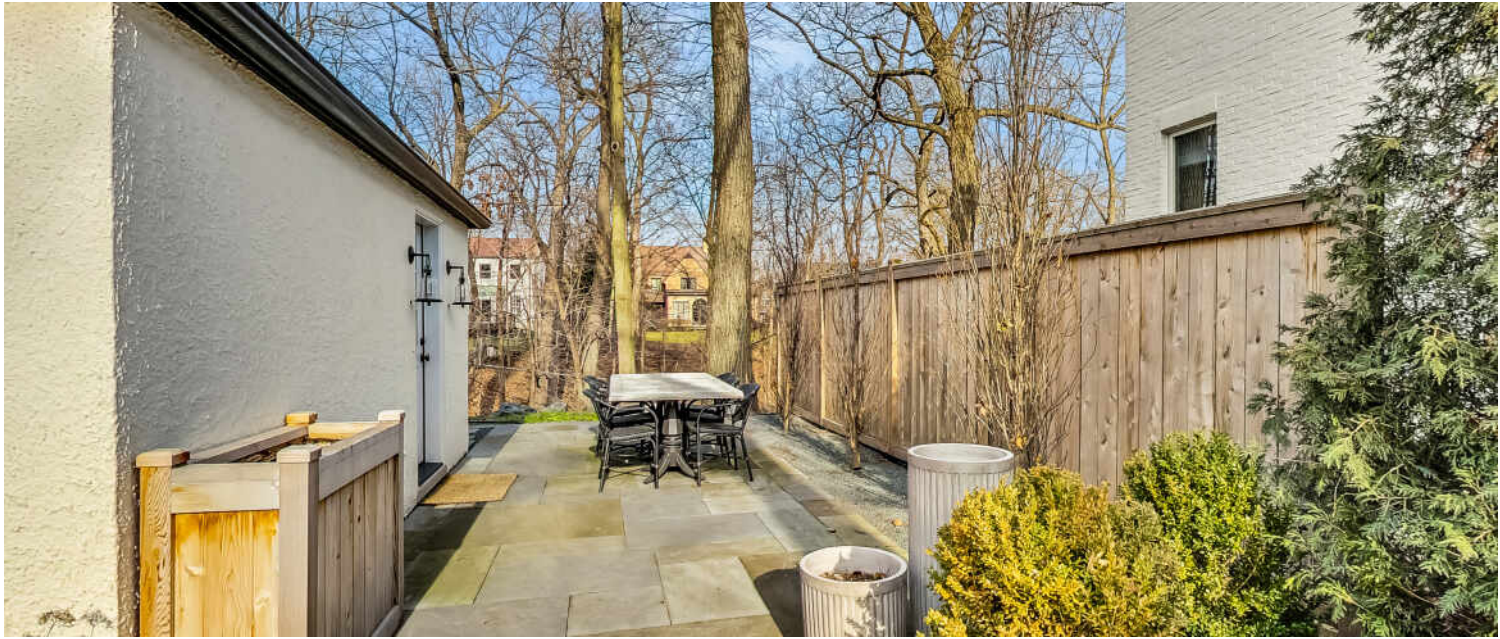
LOFT OVERLOOKING THE KITCHEN





THREE REAR PATIOS OVERLOOKING THE RAVINES





SIDE PATIO



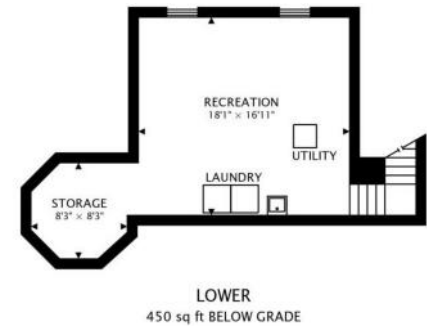


FRONT EXTERIOR





FRONT PATIO





YOU HAD ME AT RAVINIA – YET THERE’S SO MUCH MORE TO LOVE ABOUT HIGHLAND PARK.

Locals love the community's vibrant business district and popular cultural attractions including Ravinia – the North Shore's one-of-a-kind outdoor music festival.

Located 23 miles north of downtown Chicago, Highland Park is known for its vibrant downtown business district, abundant recreational facilities, and world-class amenities.

The city is home to several landmarks, including homes designed by Frank Lloyd Wright. Highland Park also created the first community land trust in Illinois to develop and preserve high-quality affordable housing for residents.

High-end homes in Highland Park range from custom lakefront mansions to multi-million-dollar contemporary estates. Mid-century moderns and in-town bungalows are plentiful, while a number of luxury condominiums offer maintenance-free living close to downtown shops, restaurants, and commuter train stations.

Residents enjoy two public beaches and the North Shore Yacht Club, a not-for-profit membership organization for sailors, kayakers, power boaters, and stand-up paddle boarders. Downtown Highland Park thrives year-round thanks to an eclectic mix of businesses including local restaurants, national retailers, and upscale boutiques.

Highland Park shines brightest in the summertime, when the sprawling outdoor Ravinia Festival welcomes the Chicago Symphony Orchestra and a diverse lineup of popular musicians. Ravinia attracts concert-goers from near and far, including locals and city-dwellers who can hop on the Metra train that conveniently stops at the festival gates.



FOYER



BEADBOARD CEILING

@properties® | CHRISTIE'S
INTERNATIONAL REAL ESTATE

Leading REAL ESTATE
COMPANIES
OF THE WORLD®

LP
LUXURY
PORTFOLIO
INTERNATIONAL®

