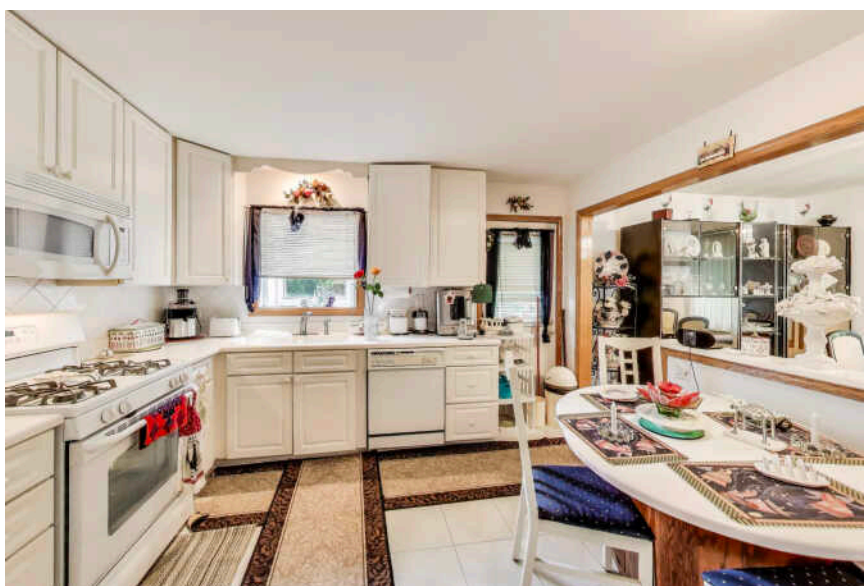


**4208 E FRONTAGE ROAD**  
ROLLING MEADOWS





#### ROOM DIMENSIONS

LIVING ROOM : 19' × 18'

DINING ROOM : 11' × 10'

KITCHEN : 12' × 10'

PRIMARY BEDROOM : 16' × 10'

SECOND BEDROOM : 14' × 12'

THIRD BEDROOM : 12' × 10'

RECREATION ROOM : 22' × 13'

LAUNDRY ROOM : 10' × 7'

STORAGE : 10' × 9'

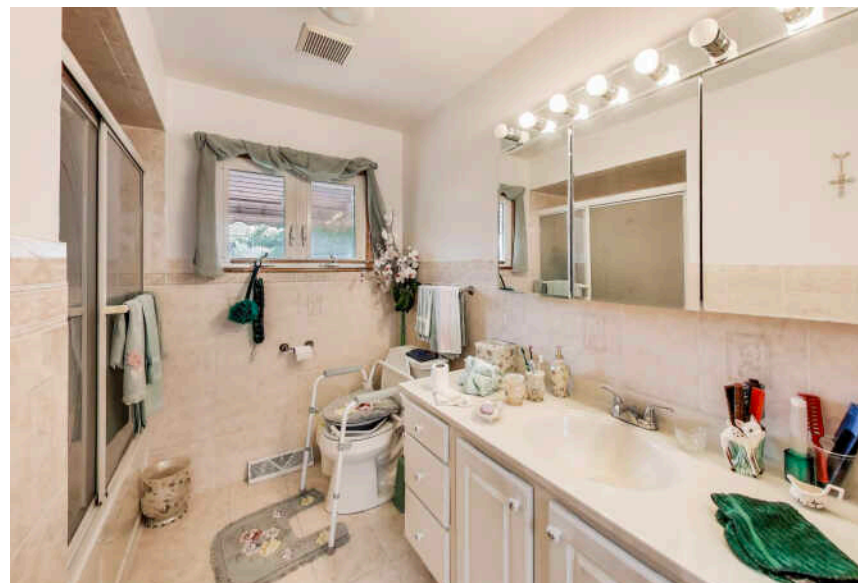
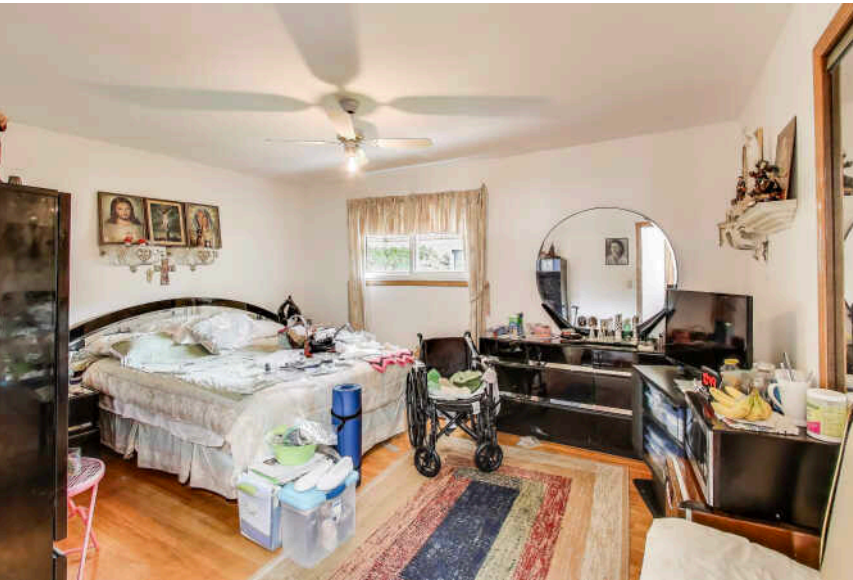
3 BEDROOM

2 BATH

TAXES: \$3,272

## PROPERTY INFORMATION & DETAILS

As you approach this home, you'll be greeted by a beautifully designed brick driveway featuring a convenient circular layout for easy access and parking. Step inside to discover a spacious living room bathed in natural light, thanks to an abundance of west-facing windows. Imagine evenings by the brick gas fireplace, creating the perfect ambiance for relaxation. The open flow into the formal dining room provides an ideal setting for entertaining guests, ensuring every gathering is memorable. The heart of the home is the inviting kitchen, designed with functionality in mind with white cabinetry, ample countertops, and space for an eat-in table. This kitchen is perfect for both everyday meals and special occasions. The main level boasts gorgeous hardwood floors that add warmth and character throughout. Venture upstairs to find three generously sized bedrooms, all adorned with beautiful hardwood flooring. A full bathroom with a soaking tub completes this upper level, offering a serene retreat for unwinding at the end of the day. But there's more to love! The lower level family room enhances your living space, providing an area for everyone to enjoy. This level also includes an additional full bathroom with a walk-in shower, a versatile storage/office space, and a convenient laundry room. Completing this exceptional property is a heated 2.5 car attached garage, ensuring your vehicles are comfortable year-round. Step outside to enjoy the brick paver patio, perfect for outdoor gatherings, and a shed for extra storage needs. Conveniently located with easy access to Route 53, the future Bears stadium, schools, and parks, this home truly offers the best of both comfort and accessibility.







**ROLLING MEADOWS HAS BEEN DUBBED  
“A GREAT PLACE TO CALL HOME” BY  
LONGTIME RESIDENTS AND NEWCOMERS  
ALIKE.**

Nestled in the Golden Corridor near the Woodfield Mall and Arlington International Racecourse, the city is also close to O’Hare International Airport and known for its excellent public transportation and expressway system.

Rolling Meadows has many parks and recreational areas and is home to various corporate headquarters and businesses. The community maintains a quintessentially suburban lifestyle. Throughout the year, residents enjoy parades, block parties, and various local events, including the annual Downtown Block Party, which brings community members together to celebrate the start of summer.

A growing community, Rolling Meadows continues to appeal to homebuyers by developing additional housing and renovating public spaces.





## AMY DIAMOND

847.497.0230

AMY@DEALWITHDIAMOND.COM

DEALWITHDIAMOND.COM



CHRISTIE'S  
INTERNATIONAL REAL ESTATE