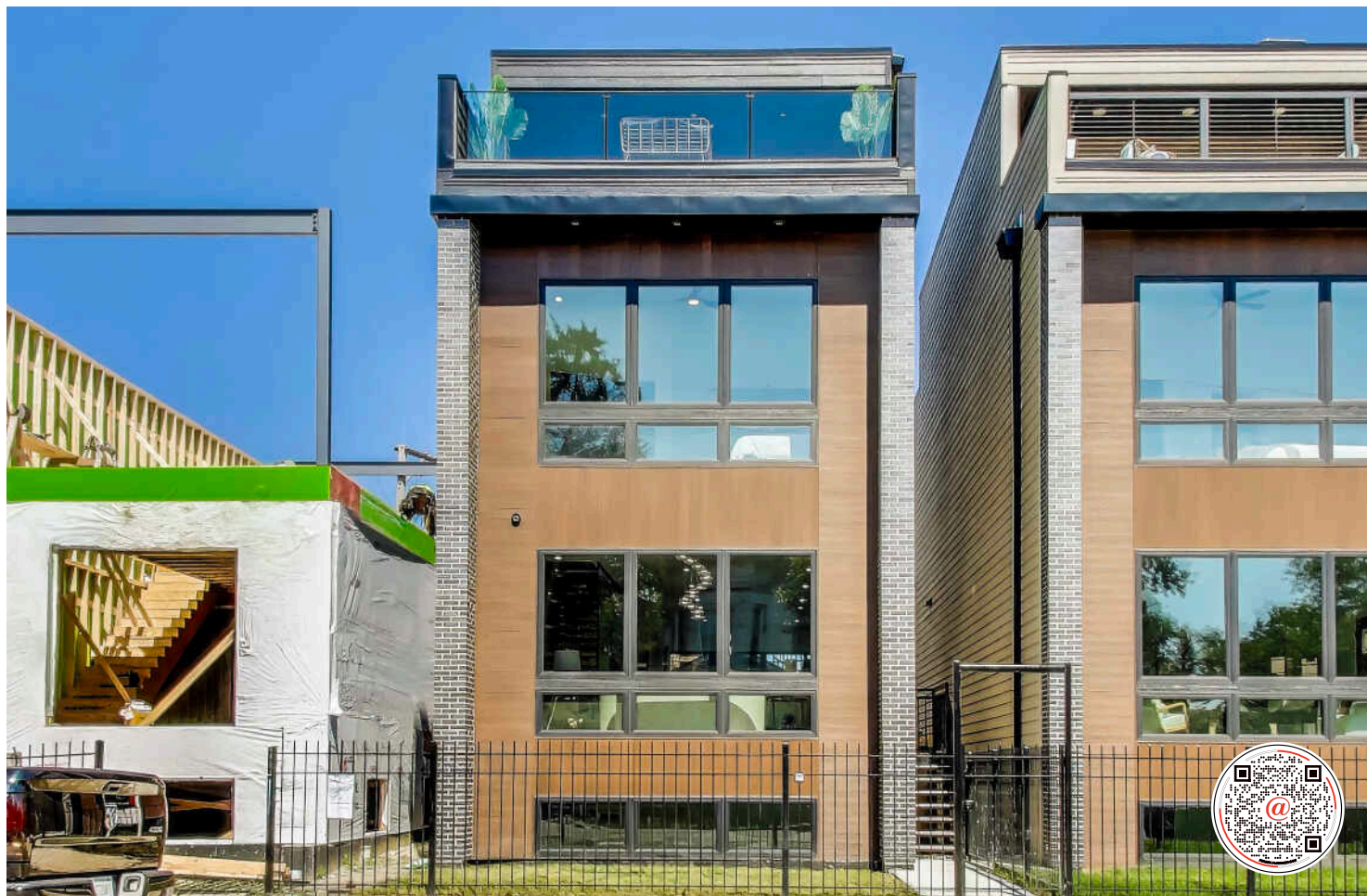
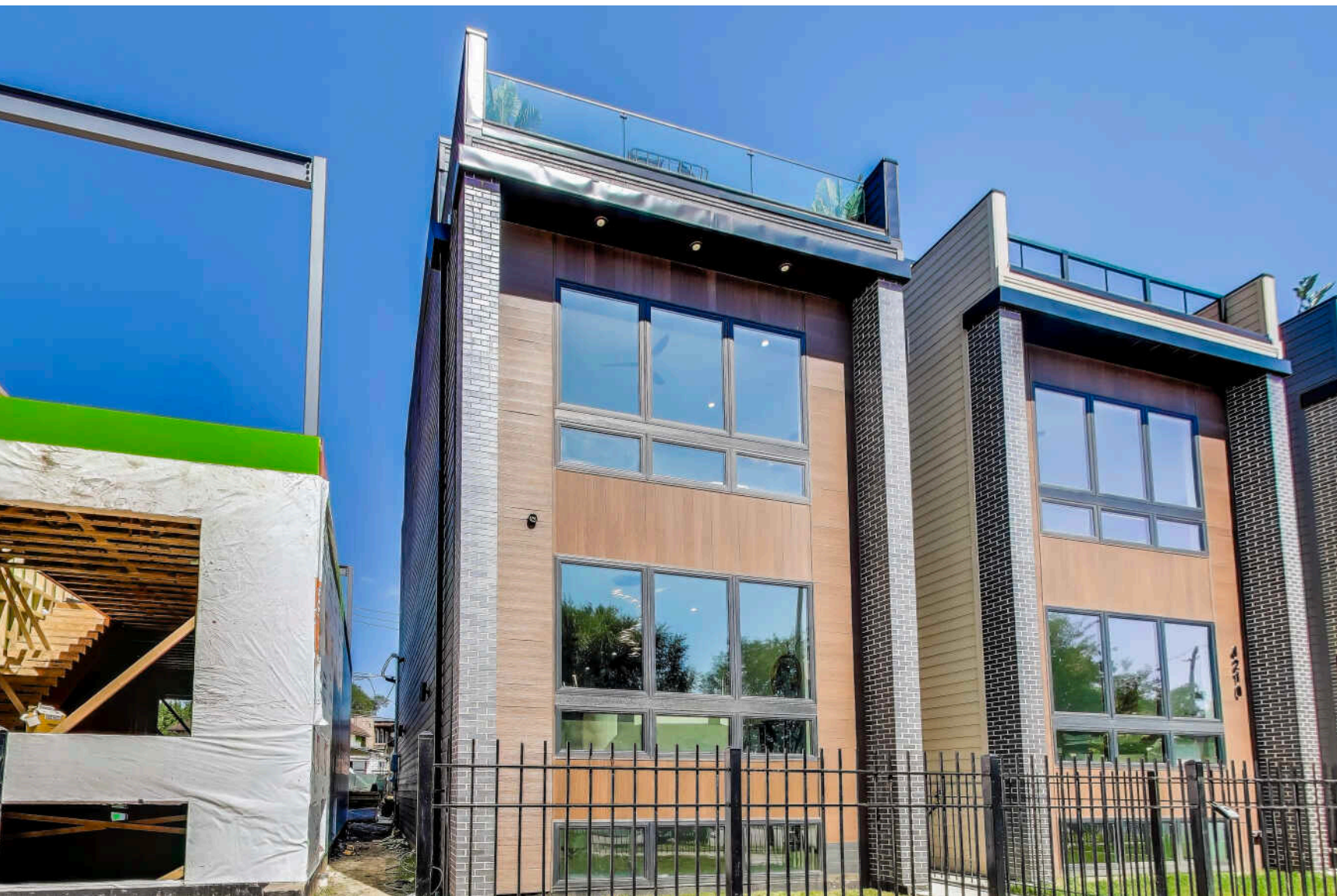


4212 W 5TH AVENUE
WEST GARFIELD PARK





ROOM DIMENSIONS

LIVING ROOM : 31' × 18'

FAMILY ROOM : 12' × 17'

KITCHEN : 17' × 18'

PRIMARY BEDROOM : 18' × 11'

SECOND BEDROOM : 14' × 11'

THIRD BEDROOM : 19' × 10'

FOURTH BEDROOM : 13' × 11'

5 BEDROOM

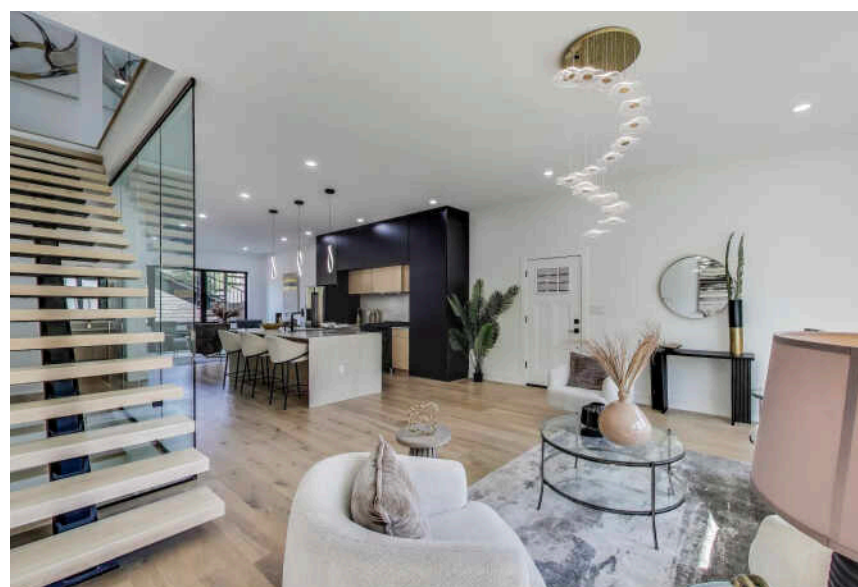
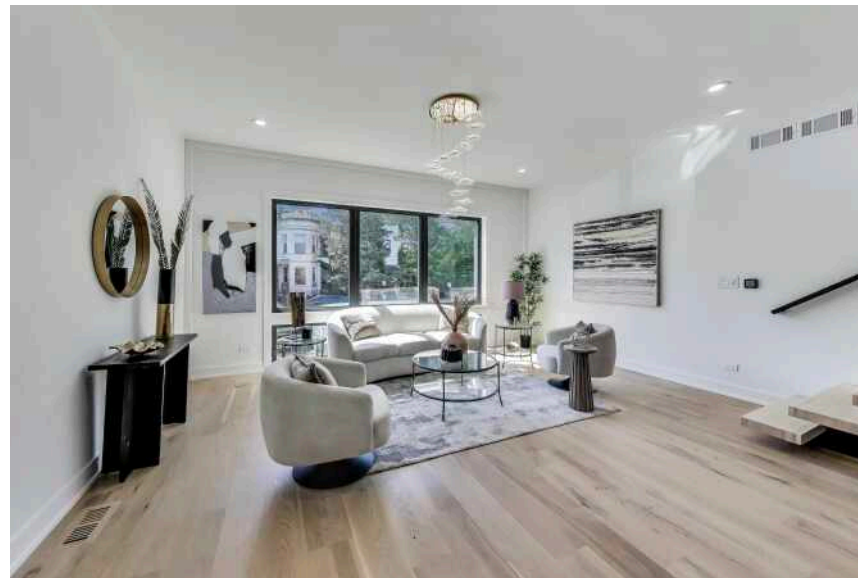
4.1 BATH

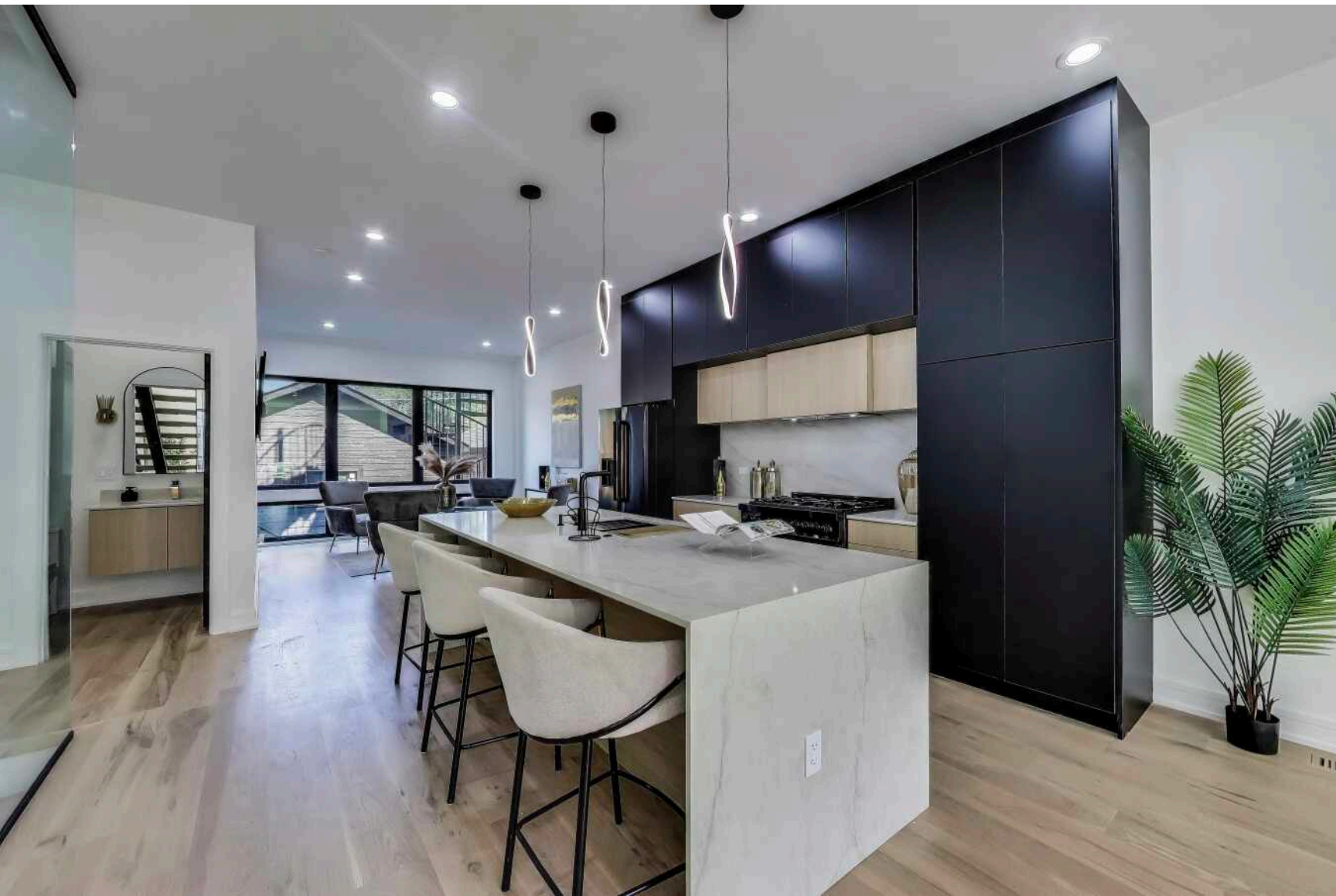
Luxury meets modern design in this brand-new 5-bedroom, 4.5-bath home offering over 3,000 sq ft of living space in Garfield Park. This four-level residence stands out with architectural style, premium finishes, and thoughtful functionality.

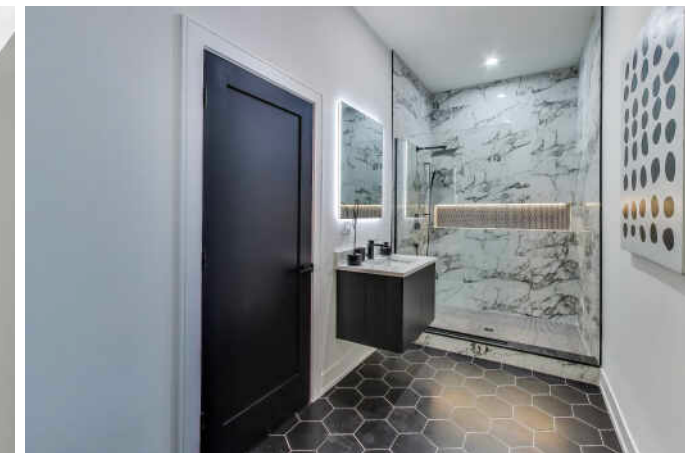
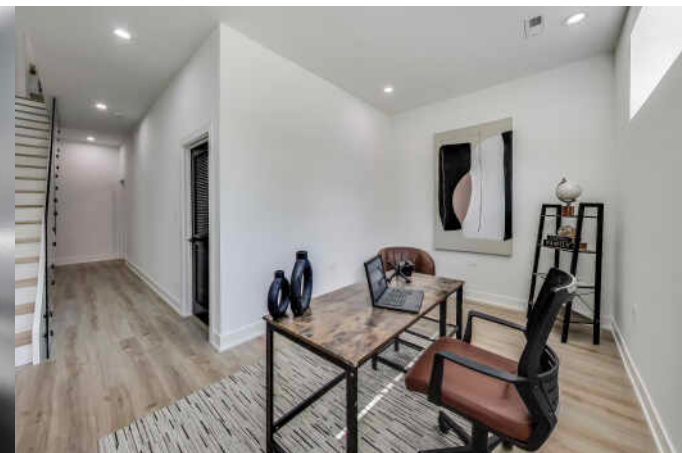
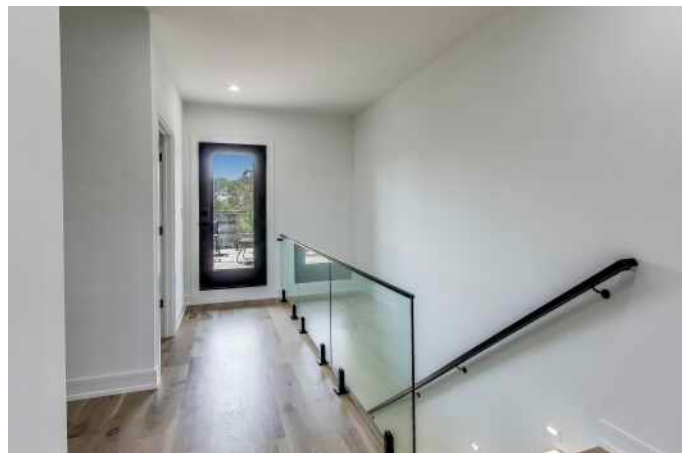
Step inside to 8" wide-plank white oak floors, recessed lighting, and a dramatic floating staircase that fills the home with light. At the heart of the main level, the chef's kitchen impresses with Taj Mahal quartzite countertops, a waterfall-edge island, custom frameless cabinetry, and a full ZLINE appliance suite. Oversized windows brighten the open layout, seamlessly connecting the kitchen, dining, and living areas.

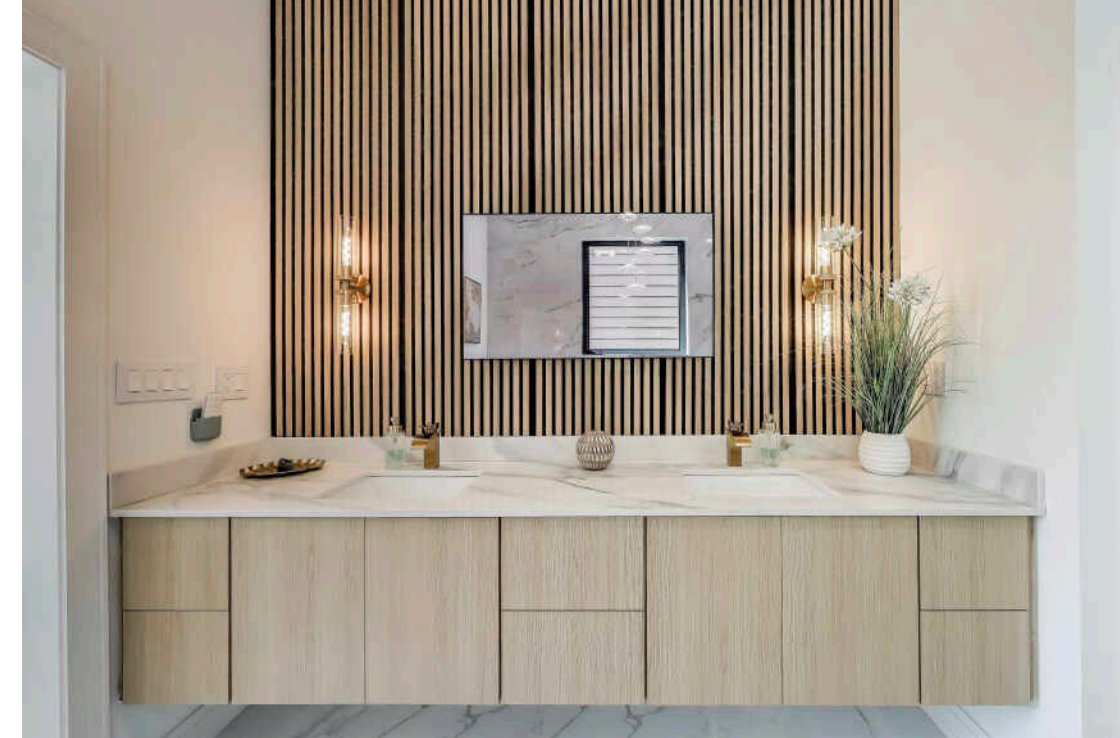
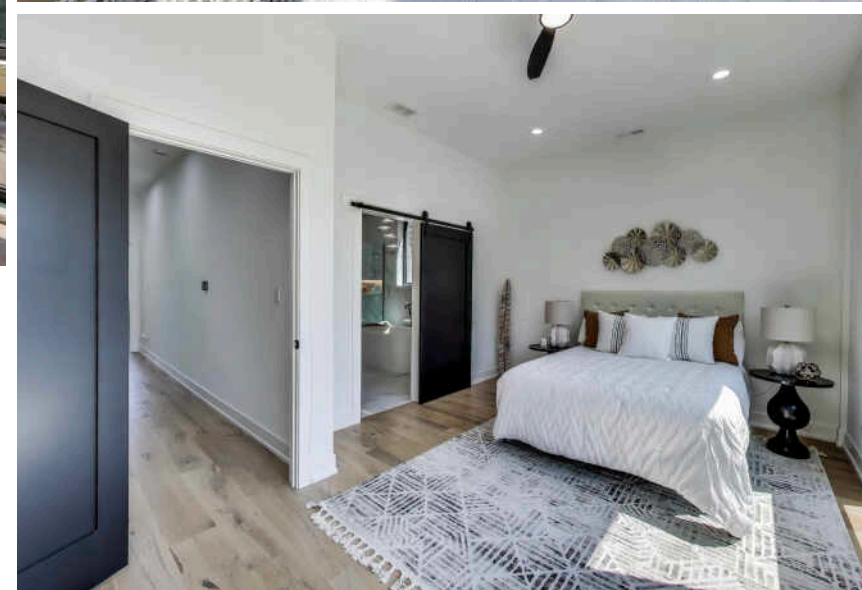
The second floor hosts a serene primary suite with a spa-inspired bath—featuring a freestanding soaking tub, frameless glass shower, double vanity, and a 42" smart mirror TV. A second en-suite bedroom, plus additional bedrooms on the upper and lower levels, provide privacy and flexibility for family, guests, or an au pair. The top level opens to a private rooftop deck, while the fully finished lower level offers 10-ft ceilings, rec space, bedrooms, and a second laundry hookup.

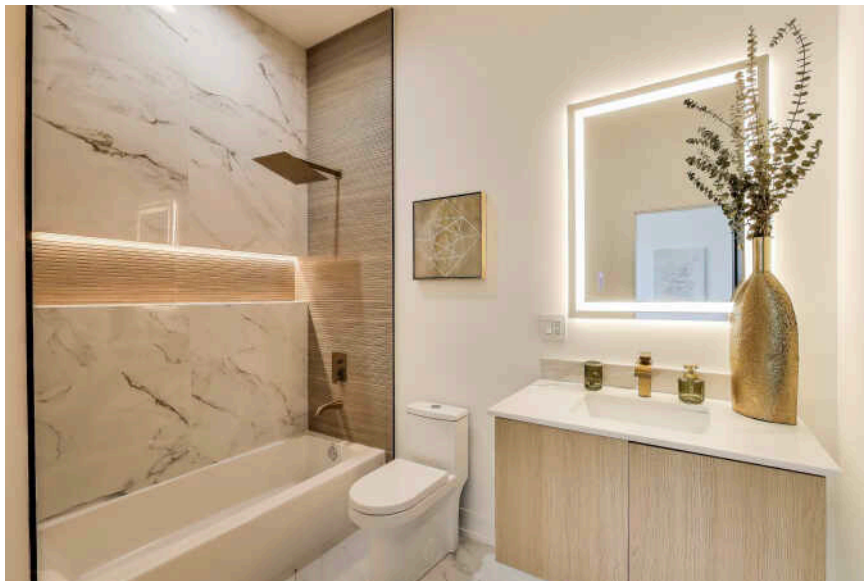
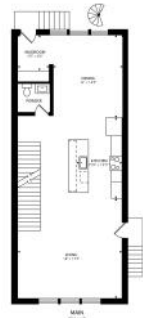
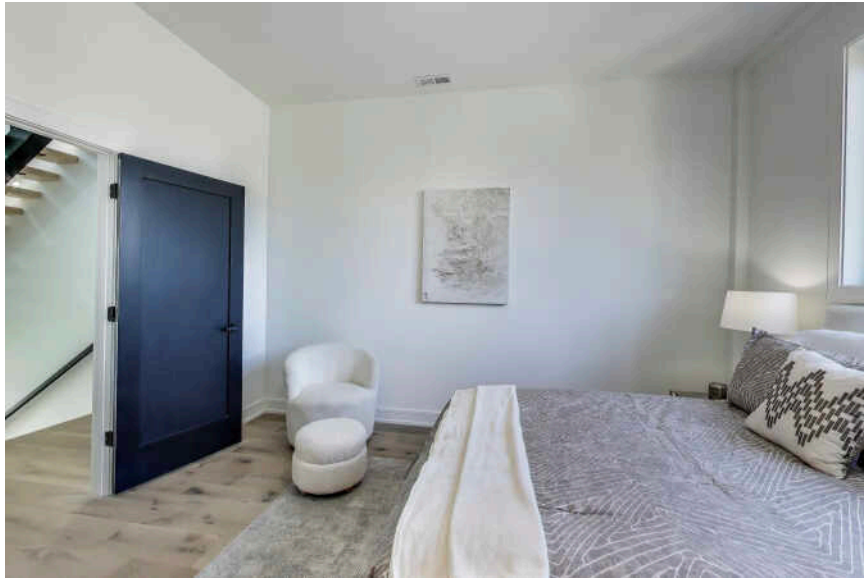
Enjoy outdoor living with a rear deck, porcelain paver patio, and a two-car garage for convenience. This home is designed for today's discerning buyer who values style, comfort, and functionality.





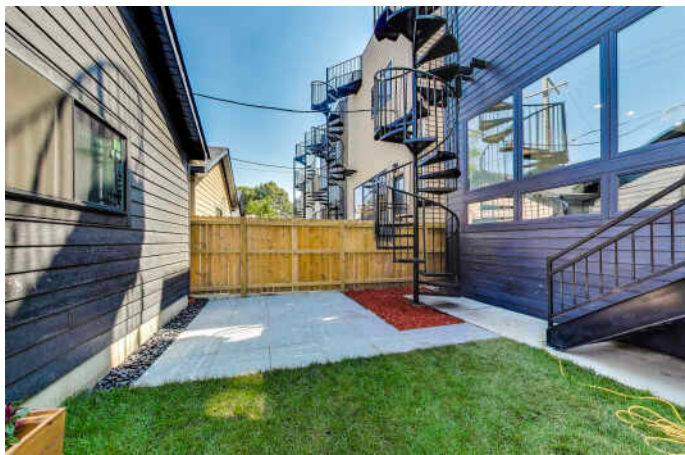
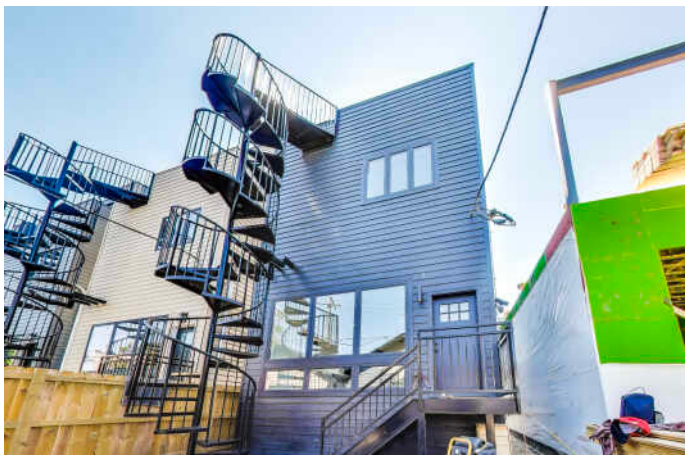








NOTES _____





KUSHUNDA WILKS

7735575578

3126828500

KUSHUNDA@ATPROPERTIES.COM



All specifications, features, designs, price, assessments, taxes and materials are subject to change without notice. Depicted floor plans and architectural renderings are only an artist's impression.

