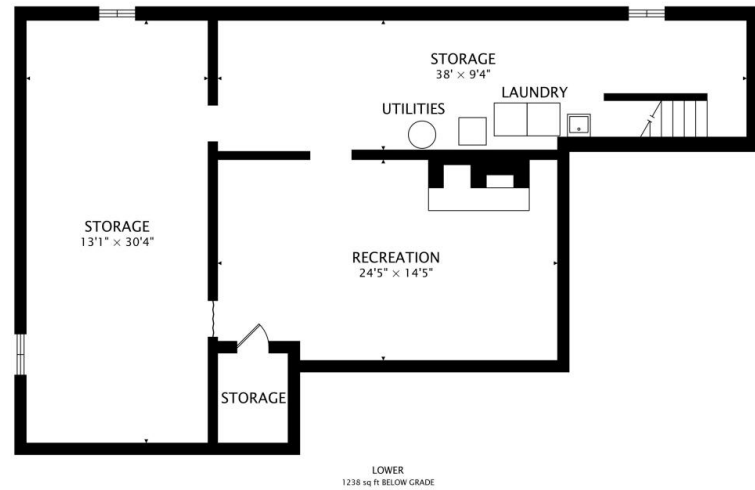
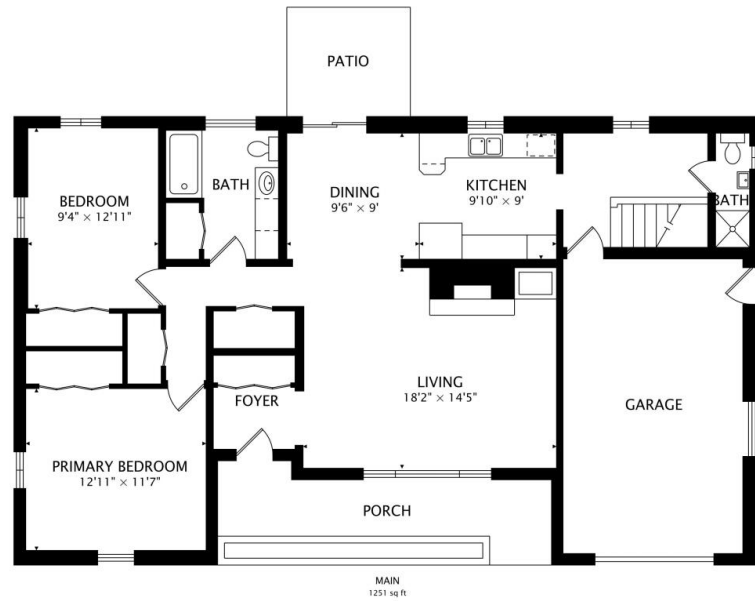


422 YANKE ROAD  
TRAIL CREEK, IN



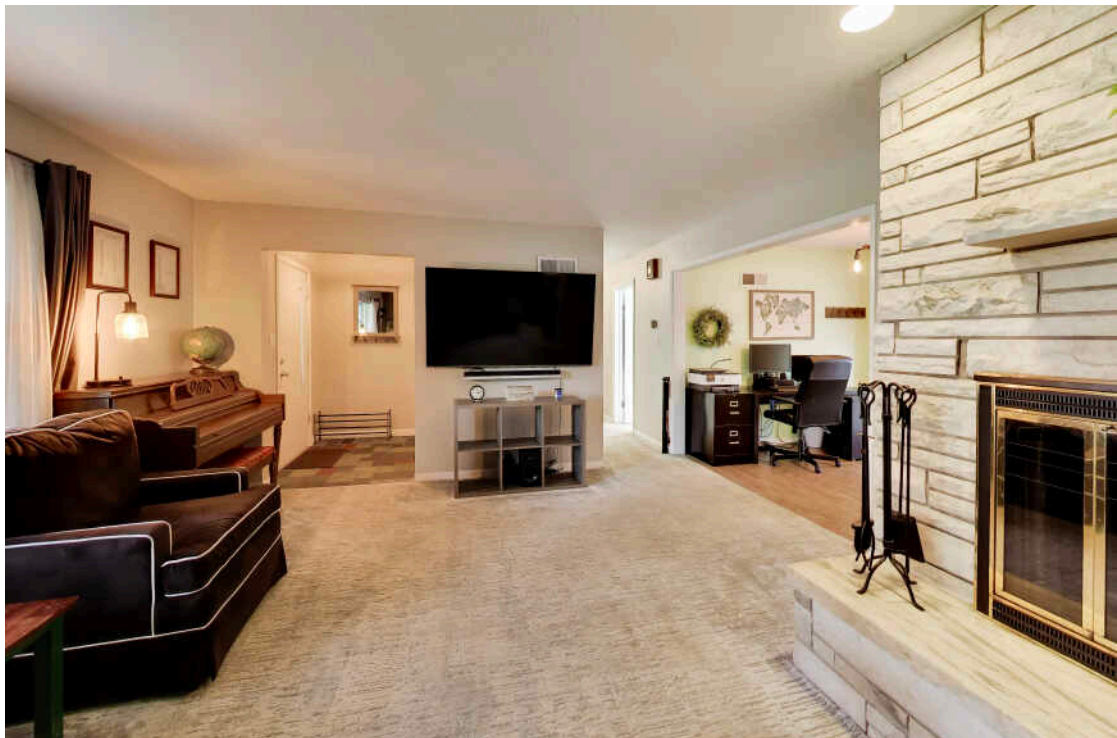
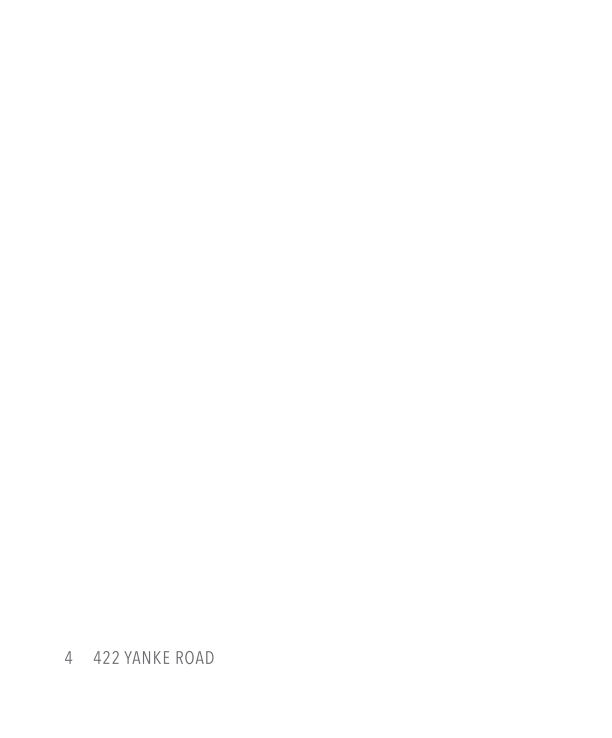


ROOM DIMENSIONS  
 LIVING ROOM : 19.0' x 15.0'  
 DINING ROOM : 10.0' x 10.0'  
 KITCHEN : 12.0' x 9.0'  
 PRIMARY BEDROOM : 13.0' x 12.0'  
 SECOND BEDROOM : 13.0' x 10.0'

## BRICK RANCH MIC-CENTURY MAGIC

- Classic charm + thoughtful updates
- Open, functional one level layout with fireplace
- Spacious bedrooms
- Abundant storage
- Newer carpet throughout
- Well-equipped kitchen with ample storage
- 2 bathrooms
- Waterproofed basement with 2nd fireplace
- Over ½ acre, wooded and private setting
- Attached garage + detached 2nd garage, for storage or hobbies
- Near parks, shopping, transportation, and beaches

2 BEDROOM  
 2 BATH







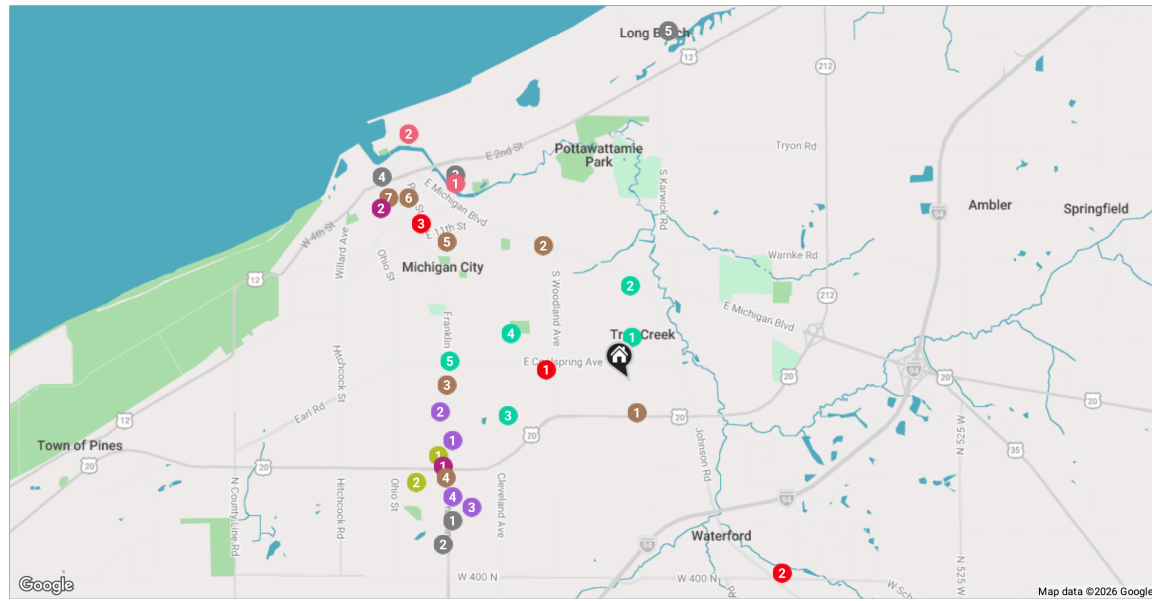
WITH PRISTINE BEACHES AND CLOSE PROXIMITY TO BOTH THE **INDIANA DUNES** AND THE SOUTH SHORE OF LAKE MICHIGAN, MICHIGAN CITY HAS IT ALL.

Home to the Old Michigan City Light, the community boasts one of the last remaining and oldest lighthouses in Indiana. Today, the Michigan City Historical Society operates the Old Lighthouse Museum for visitors to explore the historical landmark.

Residents take advantage of the many parks and beaches, as well as three golf courses. Washington Park is a local favorite, offering a beach, fishing, bird watching, hiking, picnic areas, sand volleyball, and ice skating in the winter. The nearby Washington Park Zoo is home to tigers, wolves, alligators, and grizzly bears. Michigan City's Blue Chip Casino Hotel Spa is a local getaway with a casino, dining options, and a spa. For shopping enthusiasts, the Lighthouse Place Premium Outlets features more than 100 factory stores in a park-like, village setting.

Michigan City real estate opportunities encompass beachfront cottages, grand vacation homes, and custom homes in gated resort communities.

The Michigan City Transit runs a local bus route, and both Amtrak and the South Shore Line offer daily service from Michigan City to Chicago.



**RESTAURANTS**

- 1 Chipotle Mexican Grill  
5218 FRANKLIN STREET, 2.1 MI
- 2 Olive Garden Italian Restaurant  
4441 FRANKLIN STREET, 2.3 MI
- 3 William B's Steakhouse  
777 BLUE CHIP DRIVE, 2.5 MI
- 4 Shoreline Brewery & Restaurant  
208 WABASH STREET, 3.0 MI
- 5 Hacienda Mexican Restaurant  
2148 NORTH KARWICK ROAD, 3.3 MI

**COFFEE**

- 1 We All In Recovery Cafe  
1912 U.S. 20, 0.3 MI
- 2 Dunkin'  
1701 EAST MICHIGAN BOULEVARD, 1.5 MI

**SHOPPING**

- 1 Walgreens  
101 U.S. 20, 1.9 MI
- 2 Lighthouse PI  
MICHIGAN CITY, 2.8 MI

**GROCERY**

- 1 Save A Lot  
3830 FRANKLIN STREET, 1.7 MI
- 2 Al's Supermarket  
3535 S, 1.8 MI

**GYM**

- 1 Planet Fitness  
4067 FRANKLIN STREET, 1.9 MI
- 2 Anytime Fitness  
264 DUNES PLAZA, 2.2 MI

**MEDICAL**

- 1 Franciscan Physician Network Coolspring Health Center  
1225 EAST COOLSPRING AVENUE, 0.8 MI
- 2 Northwest Health  
6923 WEST 400 NORTH, 2.3 MI
- 3 NorthShore Health Centers - Michigan City  
817 PINE STREET, 2.4 MI

**ENTERTAINMENT**

- 1 Blue Chip Casino Hotel Spa  
777 BLUE CHIP DRIVE, 2.4 MI
- 2 Washington Park Zoo, Michigan City Zoo  
115 LAKE SHORE DR, 3.1 MI

**PARKS**

- 1 Nelson Park  
TRAIL CREEK, 0.4 MI
- 2 Congdon Park  
209 RAINBOW TRAIL, 0.9 MI
- 3 Barker Woods Nature Preserve  
444 BARKER ROAD, 1.2 MI
- 4 Gardena Park  
800-898 GARDENA STREET, 1.2 MI
- 5 Washington Park  
FRANKLIN STREET, 1.7 MI

NOTES

---



---



---



---



---



---



---



---



---



---



## HANNAH VILLANI

219.309.3421 MOBILE

219.531.2288 OFFICE

HANNAHTRUEBLOOD@ATPROPERTIES.COM

WWW.VILLANITEAM.COM