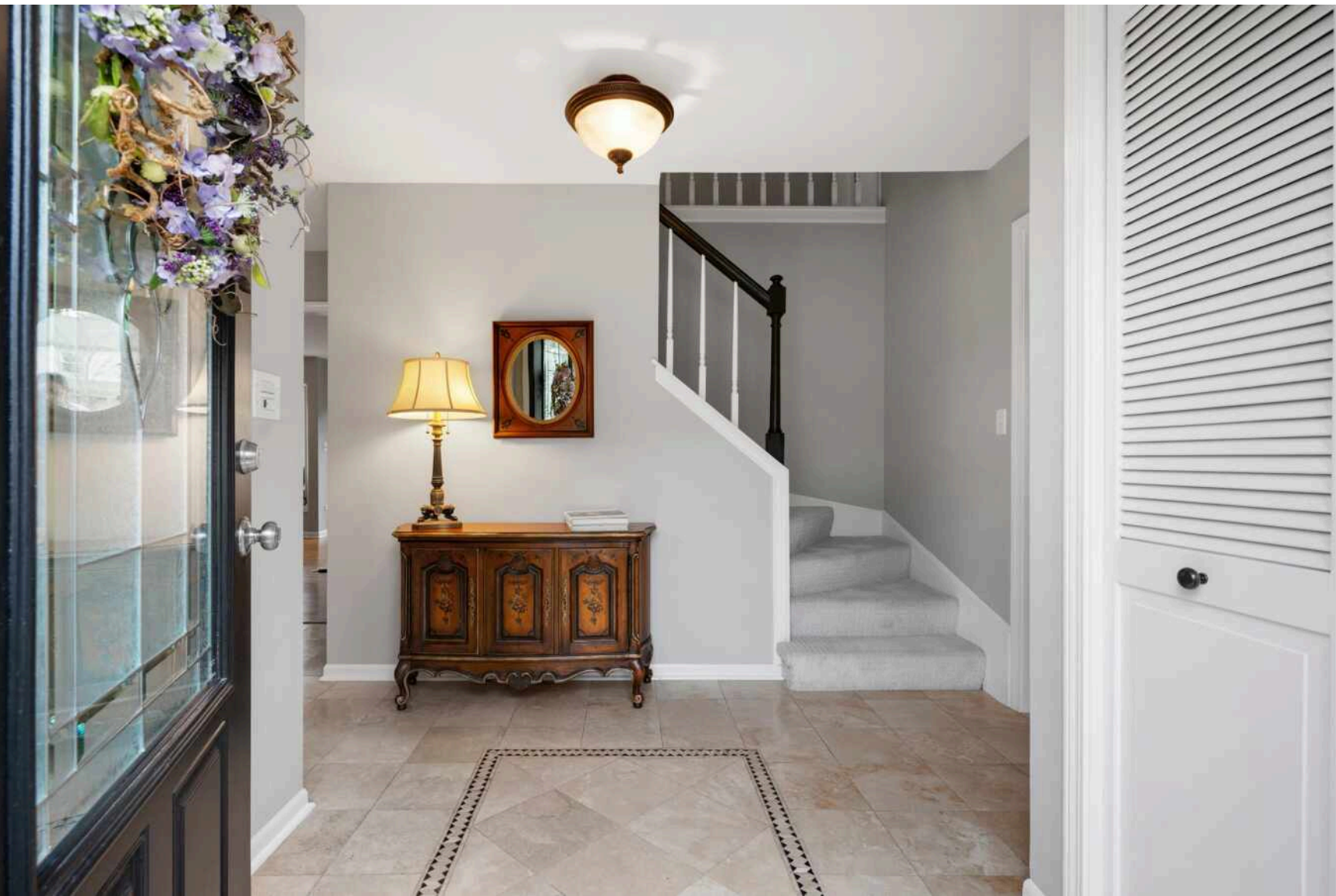


4233 OAKSBURY LANE
ROLLING MEADOWS





ROOM DIMENSIONS

LIVING ROOM : 25' × 14'

DINING ROOM : 13' × 10'

FAMILY ROOM : 16' × 20'

KITCHEN : 14' × 13'

BREAKFAST NOOK : 16' × 8'

PRIMARY BEDROOM : 16' × 14'

SECOND BEDROOM : 11' × 16'

THIRD BEDROOM : 10' × 14'

FOURTH BEDROOM : 13' × 10'

OAKSBURY BEAUTY!

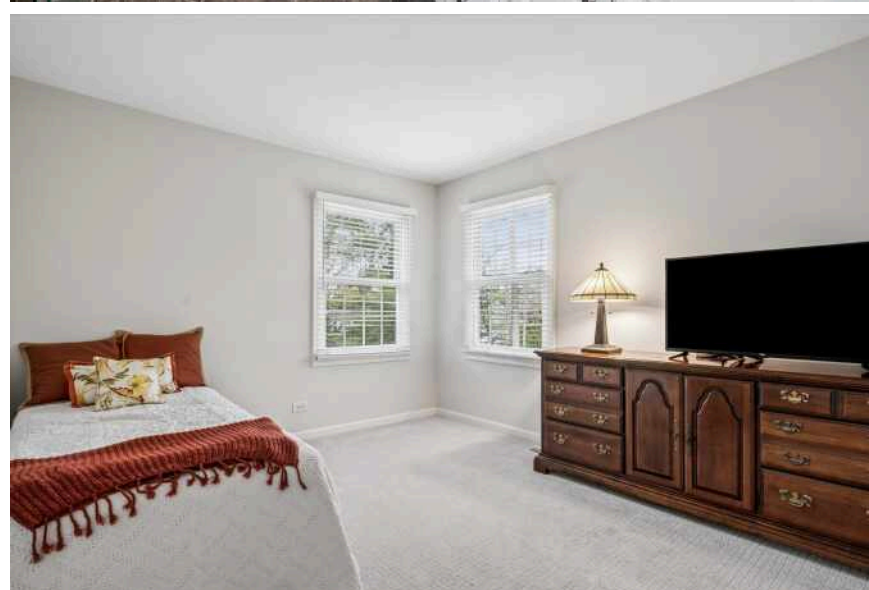
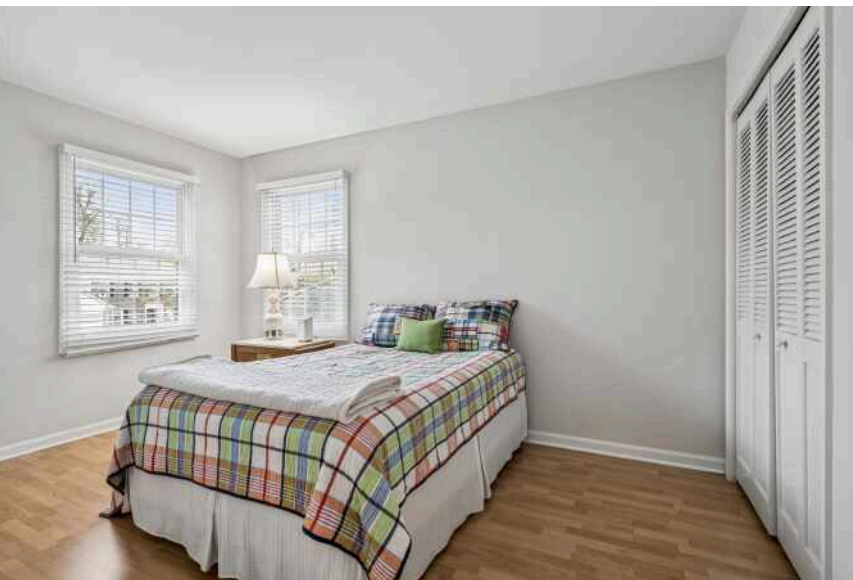
Welcome to this meticulously maintained brick Georgian single-family home on a private, wooded street in the charming Oaksbury community of Rolling Meadows. Offering 2,516 sq ft of warm, inviting space, this 4-bedroom, 2.5-bath gem is perfect for professionals with young kids. Hardwood floors grace the main level, where a kitchen with white cabinets, granite countertops, stainless steel appliances, and open family room connection creates an ideal spot for family meals and gatherings. Upstairs, a spacious primary suite with huge walk-in closet plus three additional bedrooms provide plenty of room to grow. The fully finished basement adds additional living space with a large extra bedroom, wet bar, and workspace. Enjoy the lush, landscaped backyard oasis with brick paver patio-perfect for gardening or play. Newer mechanicals ensure reliability in this lovingly cared-for home. Located in a kid-friendly neighborhood with top-rated schools, including highly ranked William Fremd High School. Move-in ready and full of charm!

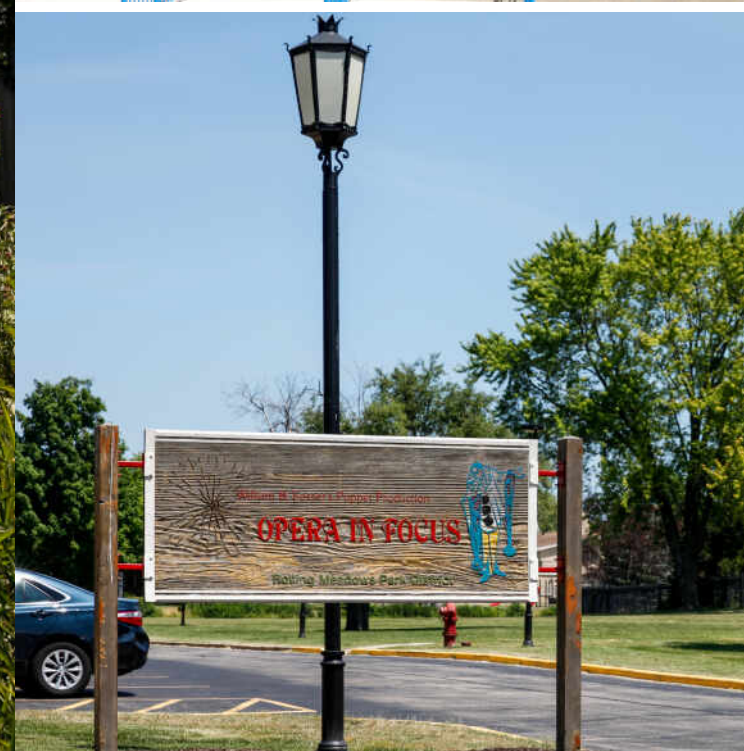
4 + 1 IN BASEMENT BEDROOM

2.1 BATH

TAXES: \$11,557







**ROLLING MEADOWS HAS BEEN DUBBED
“A GREAT PLACE TO CALL HOME” BY
LONGTIME RESIDENTS AND NEWCOMERS
ALIKE.**

Nestled in the Golden Corridor near the Woodfield Mall and Arlington International Racecourse, the city is also close to O’Hare International Airport and known for its excellent public transportation and expressway system.

Rolling Meadows has many parks and recreational areas and is home to various corporate headquarters and businesses. The community maintains a quintessentially suburban lifestyle. Throughout the year, residents enjoy parades, block parties, and various local events, including the annual Downtown Block Party, which brings community members together to celebrate the start of summer.

A growing community, Rolling Meadows continues to appeal to homebuyers by developing additional housing and renovating public spaces.



REGINA SCHWEINEBRATEN

1 2245005330

8477970200

REGINAS@ATPROPERTIES.COM

