

423 CENTRAL AVENUE WILMETTE



423 CENTRAL AVENUE
WILMETTE



423CENTRAL.INFO



LAURA FITZPATRICK SENIOR BROKER

312.217.6483 mobile
847.251.1100 office
laurafitzpatrick@atproperties.com
www.newtrierrealstate.com

423 CENTRAL AVENUE
WILMETTE





423 CENTRAL AVENUE GORGEOUS VICTORIAN SITTING IN EAST WILMETTE

ROOM DIMENSIONS

Living Room	20'x17'
Family Room	15'x14'
Dining Room	16'x15'
Kitchen	13'x13'
Primary Bedroom	17'x12'
Second Bedroom	16'x15'
Third Bedroom	15'x12'
Fourth Bedroom	15'x15'
Fifth Bedroom	15'x13'
Office-First Floor	13'x10'
Office-Third Floor	15'x14'

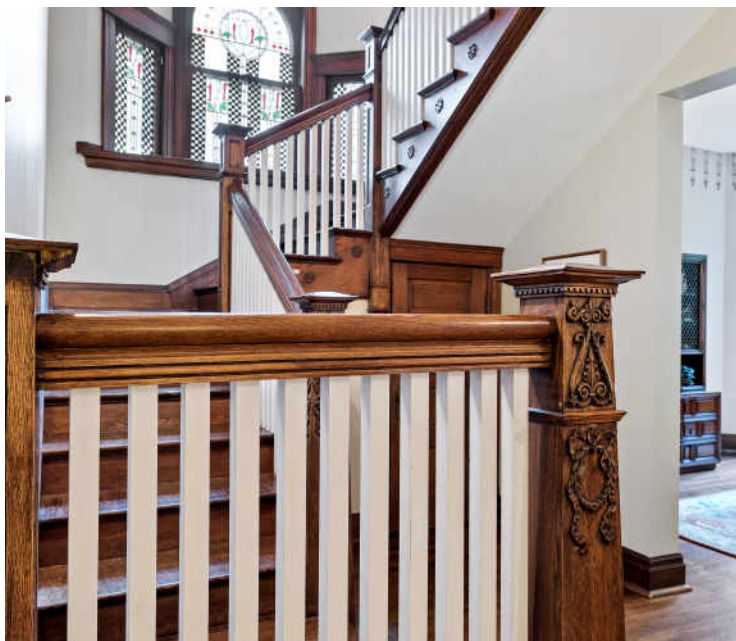
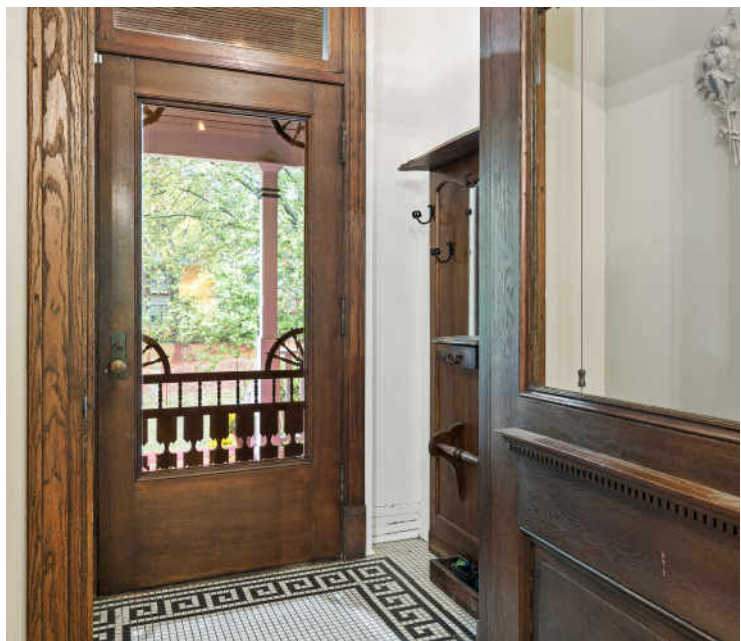
FEATURES

Gorgeous, well maintained Victorian home on oversized lot in East Wilmette. Old world charm & character meets flexible floor plan for today's living. Nice large rooms & high ceilings throughout. First floor features formal living room, dining room, parlor, large foyer, home office and open kitchen and family room addition. Two beautiful, imported fireplace mantels. Second floor features primary suite, plus two additional bedrooms and a hall bath, and second floor laundry room. Third floor features bedrooms 4 & 5 with Jack and Jill bathroom plus an additional bonus room/office in turret of house. Finished basement with rec room, full bath & craft room. 3 car detached garage + 1 outdoor parking space off alley. Incredible charm and details, beautiful craftsmanship throughout and detail in moldings & stained glass windows. Steps to Lake Michigan at 22 acre Gillson Park & Wilmette Harbor, Wilmette dog beach, Bahai temple, Golf Course, Close to downtown Wilmette for shops & restaurants, transportation, Central Elementary & St Francis Xavier Schools. A must see!



LAURA FITZPATRICK SENIOR BROKER

312.217.6483 mobile laurafitzpatrick@atproperties.com
847.251.1100 office www.newtrierrealestate.com







PARLOR, USED AS DINING ROOM

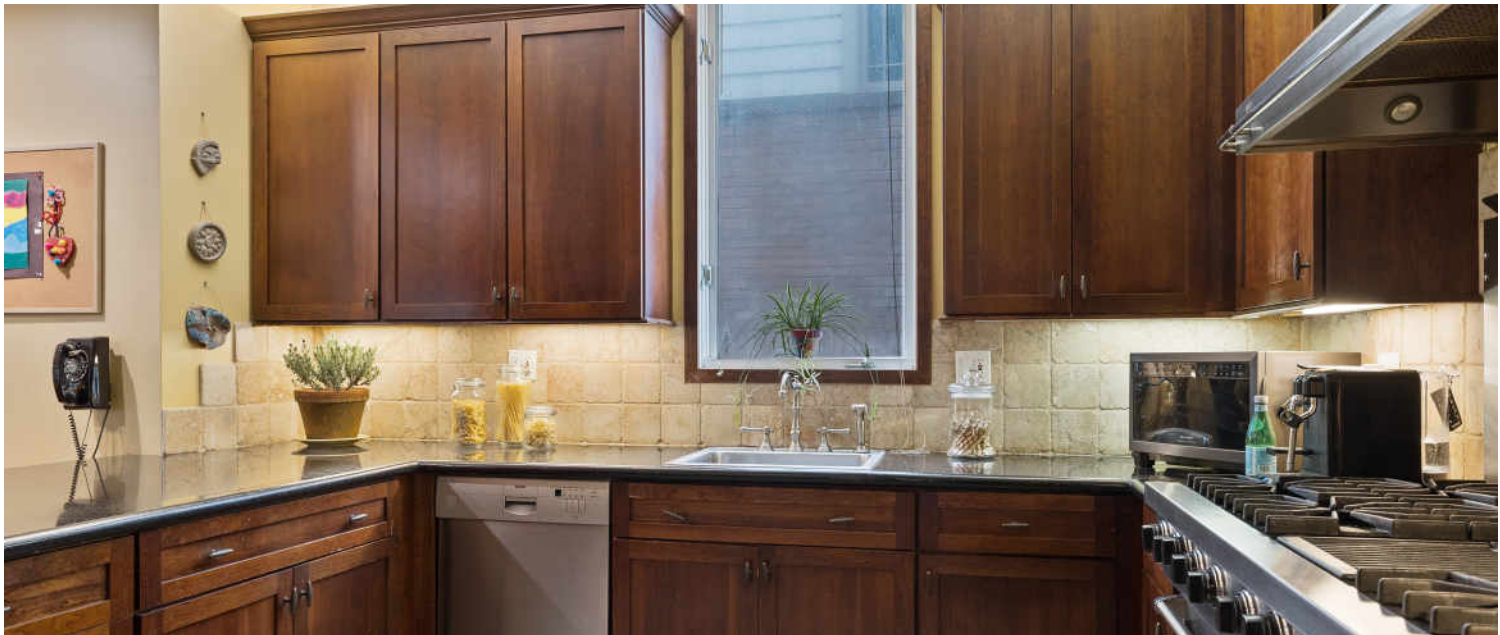




LIVING ROOM WITH DOUBLE DOORS OPENING TO EXPANSIVE



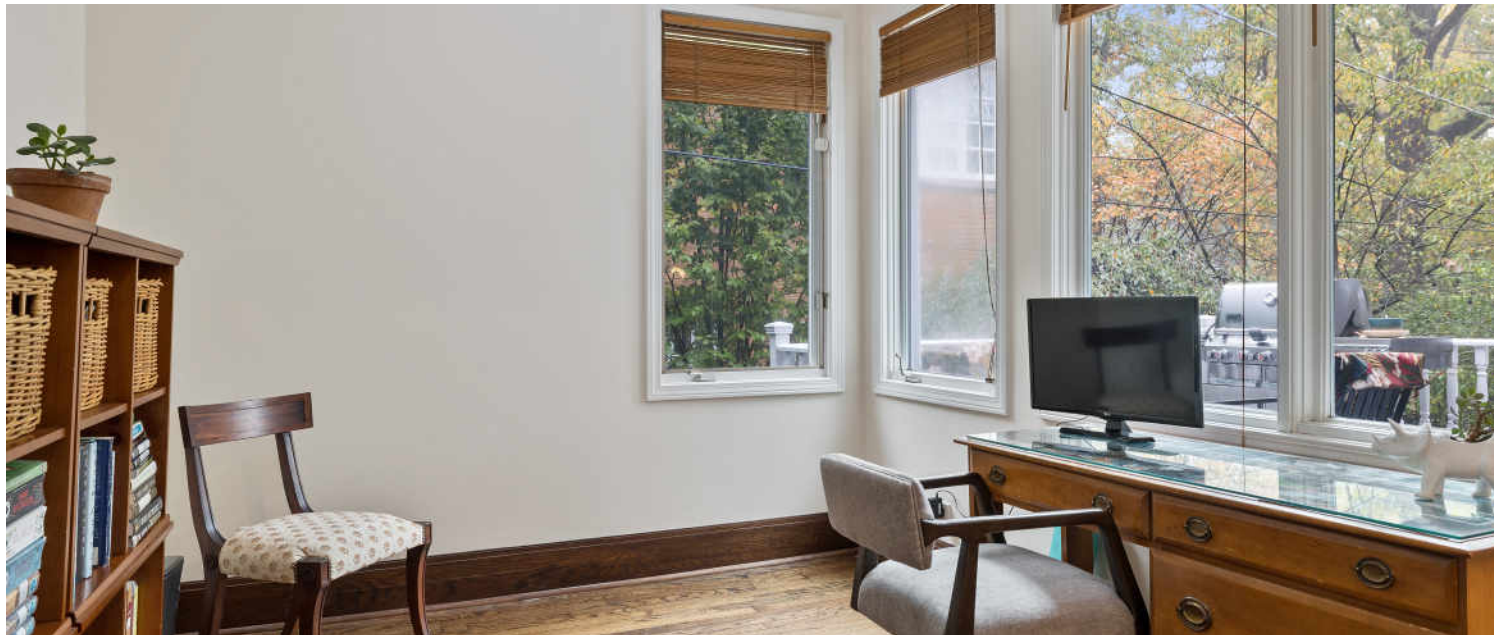
KITCHEN OVERLOOKING FAMILY ROOM FEATURING COMMERCIAL



KITCHEN OVERLOOKING FAMILY ROOM FEATURING COMMERCIAL



KITCHEN TABLE SPACE OVERLOOKING FAMILY ROOM



FIRST FLOOR OFFICE



PRIMARY BATHROOM FEATURING SHOWER, TUB, DOUBLE SIN



PRIMARY BATHROOM FEATURING SHOWER, TUB, DOUBLE SIN



PRIMARY BEDROOM FEATURING TONS OF CLOSET SPACE



SECOND FLOOR LAUNDRY



BEDROOM #2



3RD FLOOR BONUS, CEDAR ROOM IN TURRET OF HOUSE



BEDROOM #4



BEDROOM #5



3RD FLOOR, JACK AND JILL BATHROOM FEATURING CLAW F



3RD FLOOR, JACK AND JILL BATHROOM FEATURING CLAW F



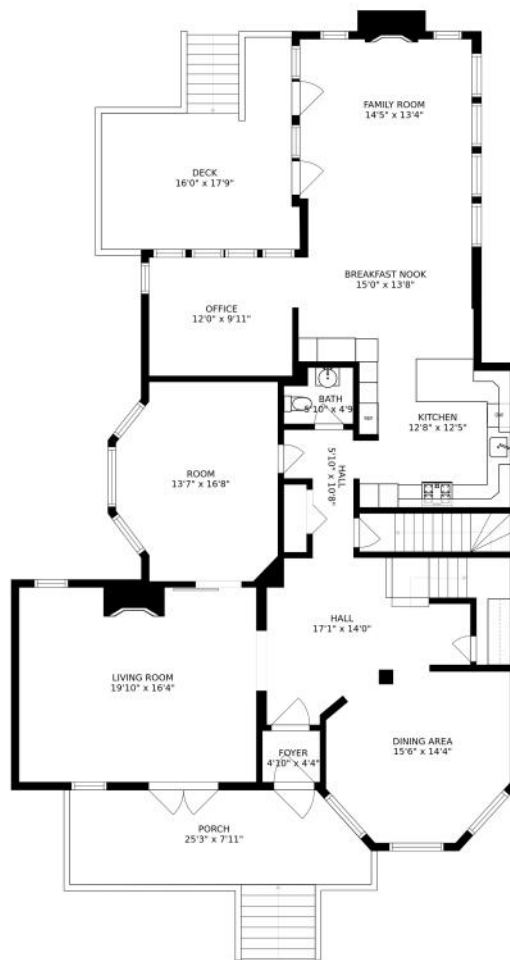
FULL BATHROOM WITH SHOWER IN BASEMENT



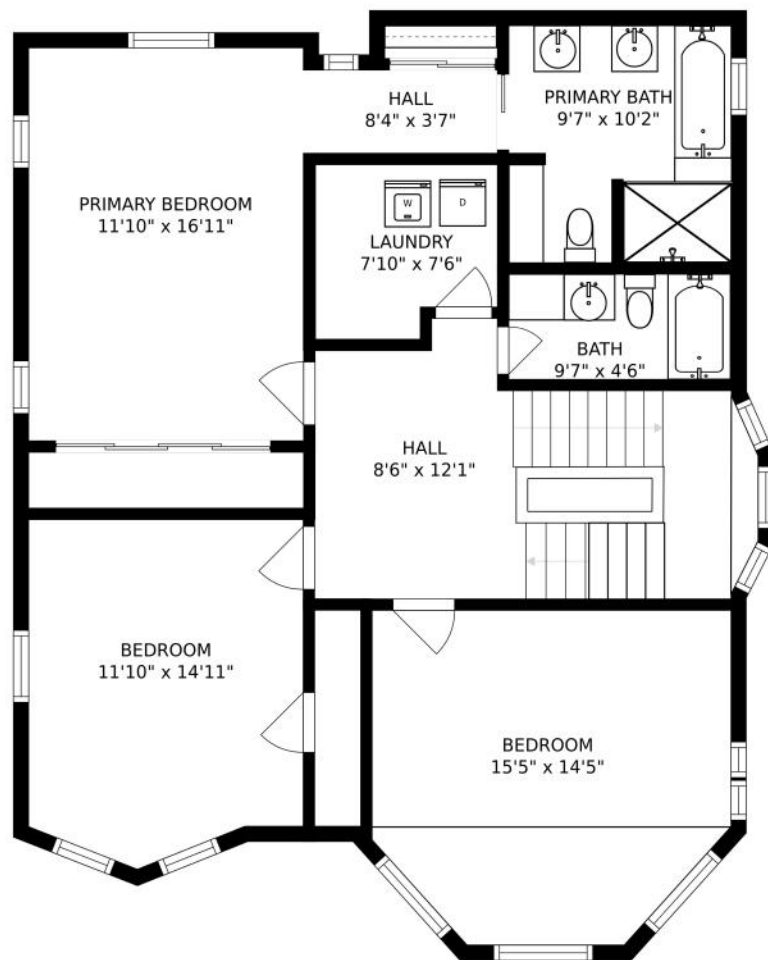
FINISHED REC ROOM IN BASEMENT



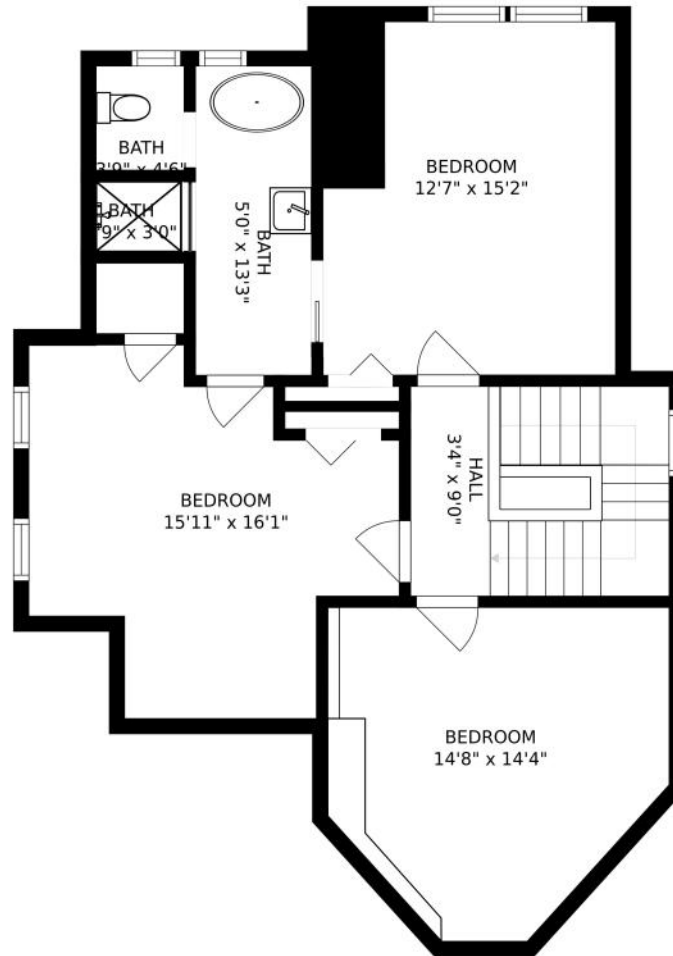
FINISHED REC ROOM IN BASEMENT



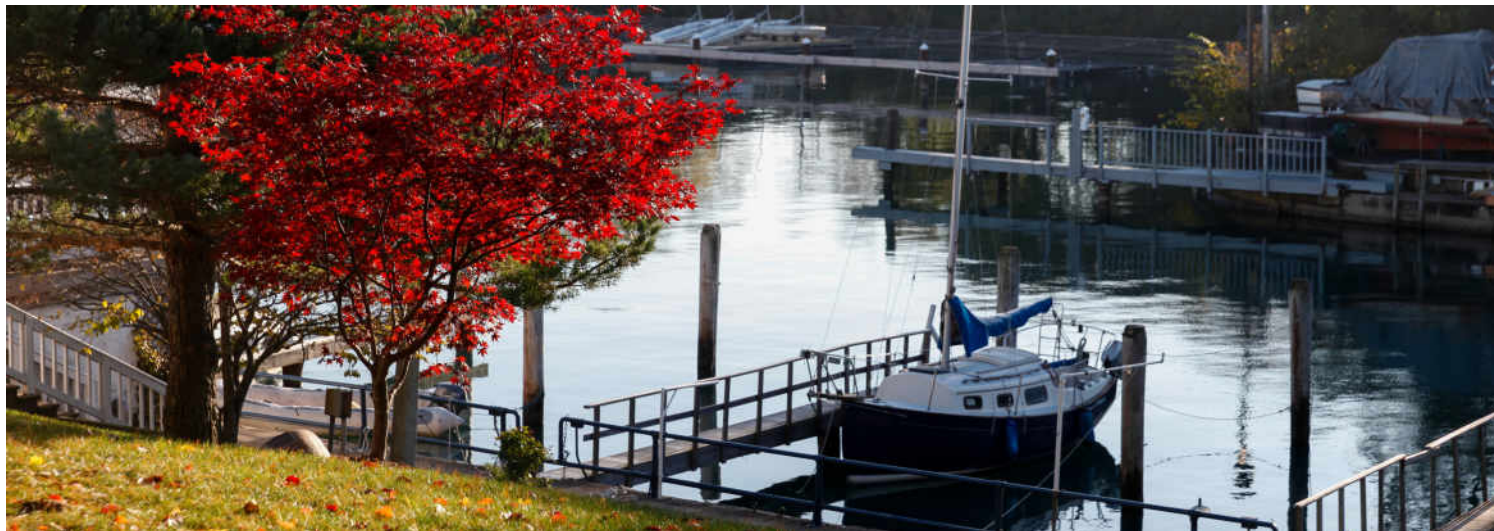
SIZES AND DIMENSIONS ARE APPROXIMATE, ACTUAL MAY VARY.



SIZES AND DIMENSIONS ARE APPROXIMATE, ACTUAL MAY VARY.



SIZES AND DIMENSIONS ARE APPROXIMATE, ACTUAL MAY VARY.



WITH HIGHLY-RATED SCHOOLS AND A WEALTH OF AMENITIES, IT'S NO SURPRISE **WILMETTE** HAS BEEN RANKED BY *CHICAGO* MAGAZINE AS ONE OF THE CHICAGO AREA'S BEST PLACES TO LIVE.

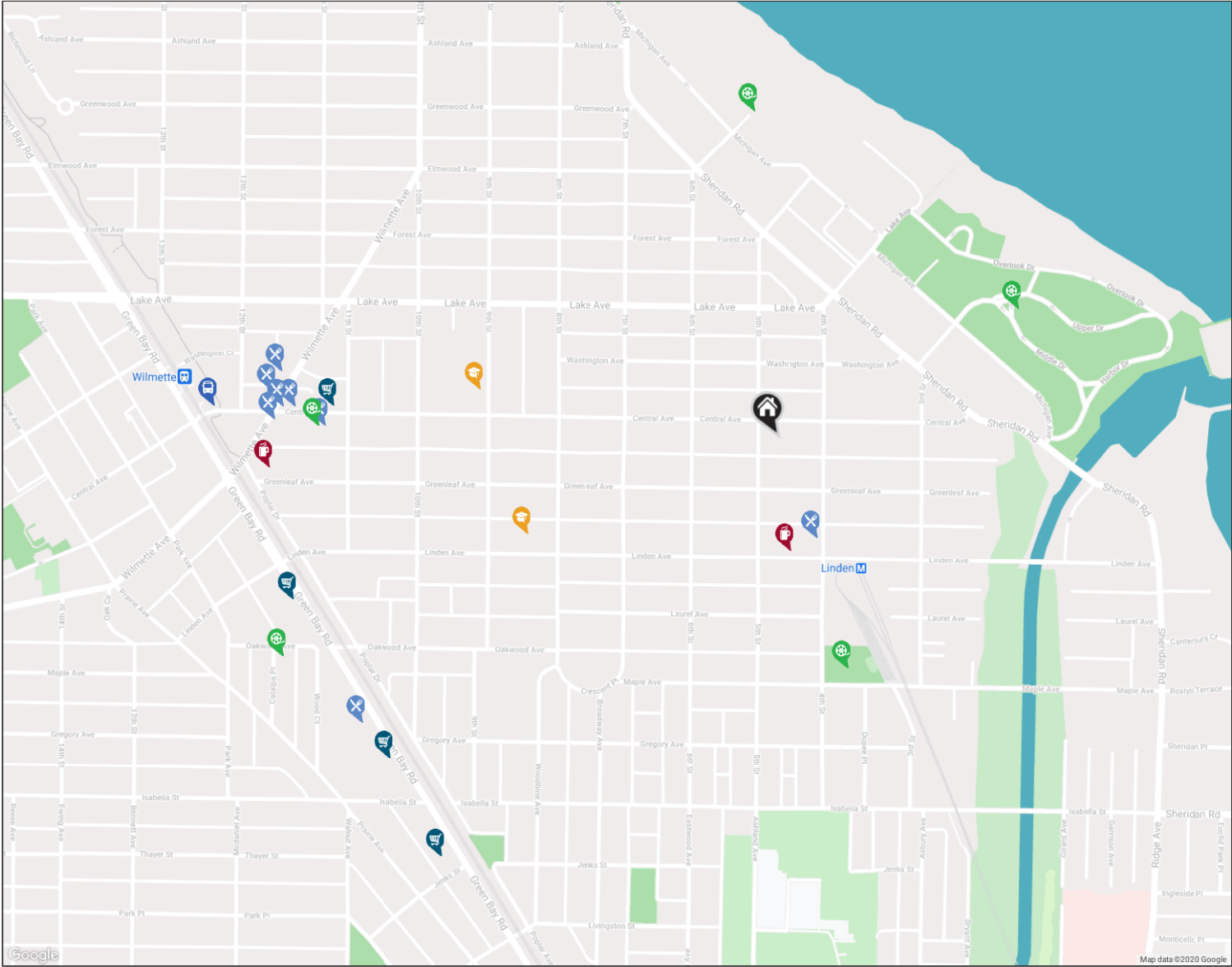
Locals love the convenience that comes with living in this picturesque North Shore community. From shopping and fine dining to a beautiful lakefront setting that's within easy reach of downtown Chicago, Wilmette has it all.

When it comes to housing, there's no shortage of architectural styles and price points in this lakefront community. Quintessential Cape Cod, Victorian, and Colonial homes line the village's historic streets, many of which are paved with clay-fired bricks from the 1800s. In addition to single-family homes, there are beachfront condominiums and townhomes. While well-kept homes maintain Wilmette's rich architectural history in all of its glory, new construction attests to the village's enduring popularity.

The schools in Wilmette are among the best. In fact, two Wilmette elementary schools are among the select schools in the state to be awarded the prestigious National Blue-Ribbon Award. The community is also served by the highly-acclaimed New Trier High School, located in Winnetka.

Wilmette's Metra station and access to I-94 make commuting to downtown Chicago a breeze, but there's plenty of reasons to stay local. At the heart of town is the Village Center, where you'll find specialty stores, restaurants, and the Wilmette Theatre. Along Sheridan Road there is Plaza del Lago, providing more shops and services to locals. Meanwhile, ample recreational activities are available at Gillson Park and beach, Wilmette Harbor, and the Centennial Recreation Complex, which includes swimming, tennis, and ice skating.

NEIGHBORHOOD GUIDE MAP



NEIGHBORHOOD GUIDE



RESTAURANTS

JP's Pizza & Grill
509-511 4TH STREET, 0.1 MI

Big Tomato Pizzeria
1109 CENTRAL AVENUE, 0.6 MI

Walker Bros. Original Pancake House
153 GREEN BAY ROAD, 0.7 MI

Valley Lodge Tavern
1141 CENTRAL AVENUE, 0.7 MI

Torino Ramen
1162 WILMETTE AVENUE, 0.7 MI

Napolita
1126 CENTRAL AVENUE, 0.7 MI

Pescadero
1167 WILMETTE AVENUE, 0.7 MI

Sophia Steak
1146 WILMETTE AVENUE, 0.7 MI



COFFEE SHOPS

Alchemy Coffee & Bake House
416 LINDEN AVENUE #2845, 0.2 MI

Panera Bread
1199 WILMETTE AVENUE, 0.7 MI



SHOPPING

Wilmette Wine Cellar
1100 CENTRAL AVENUE, 0.6 MI

Wilmette Hardware
127 GREEN BAY ROAD, 0.7 MI

Whole Foods Market
2748 GREEN BAY ROAD, 0.7 MI

Jewel-Osco
411 N, 0.7 MI



SCHOOLS

Central Elementary School
910 CENTRAL AVE, 0.4 MI

St Francis Xavier School
808 LINDEN AVE, 0.4 MI



ENTERTAINMENT

Maple Park
WILMETTE, 0.3 MI

Gillson Park
WILMETTE, 0.4 MI

Elmwood Dunes Preserve
ELMWOOD AVE, 0.4 MI

Veterans Park
1111 CENTRAL AVE, 0.6 MI

Wheeler Park
1115-1129 OAKWOOD AVE, 0.7 MI



TRANSIT

Wilmette Station
722 GREEN BAY RD, 0.8 MI

@properties®

Leading REAL ESTATE
COMPANIES
OF THE WORLD®

LP
LUXURY
PORTFOLIO
INTERNATIONAL®

