

4255 OAK KNOLL LANE
POPLAR HILLS NORTH - HOFFMAN ESTATES





ROOM DIMENSIONS

LIVING ROOM : 18' × 13'

FAMILY ROOM : 17' × 13'

DINING ROOM : 12' × 11'

KITCHEN : 12' × 12'

PRIMARY BEDROOM : 15' × 12'

SECOND BEDROOM : 12' × 11'

THIRD BEDROOM : 12' × 10'

FOURTH BEDROOM : 15' × 12'

REC ROOM : 22' × 23'

4 BEDROOM

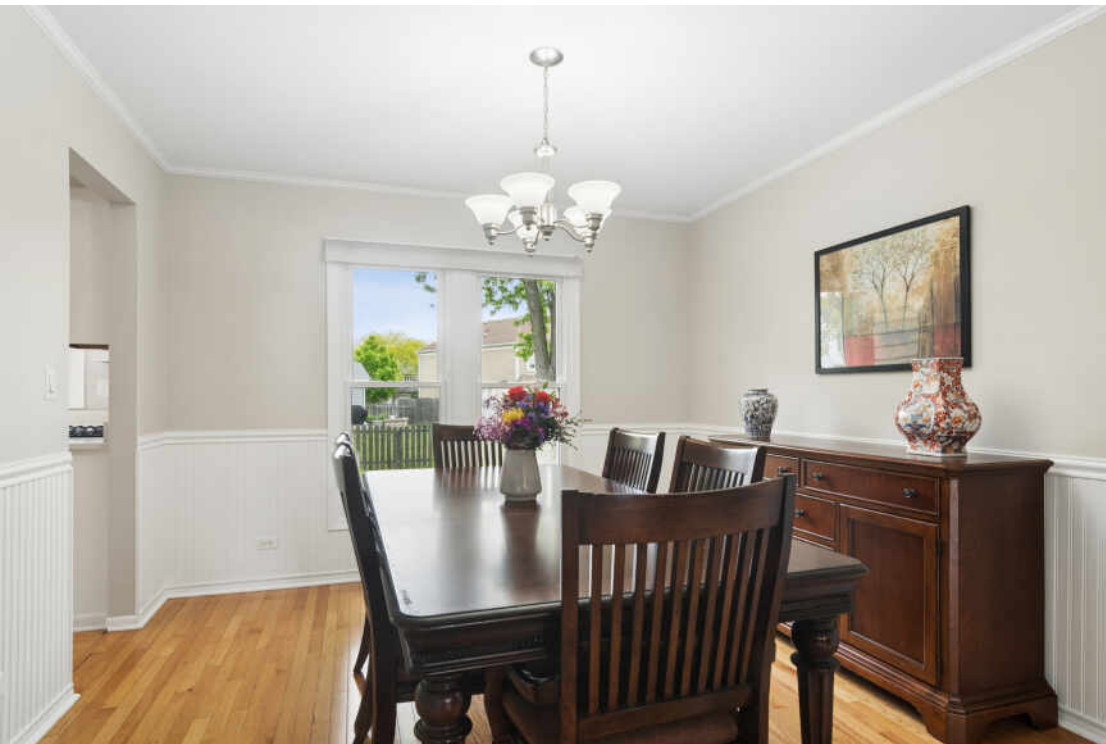
3.1 BATH

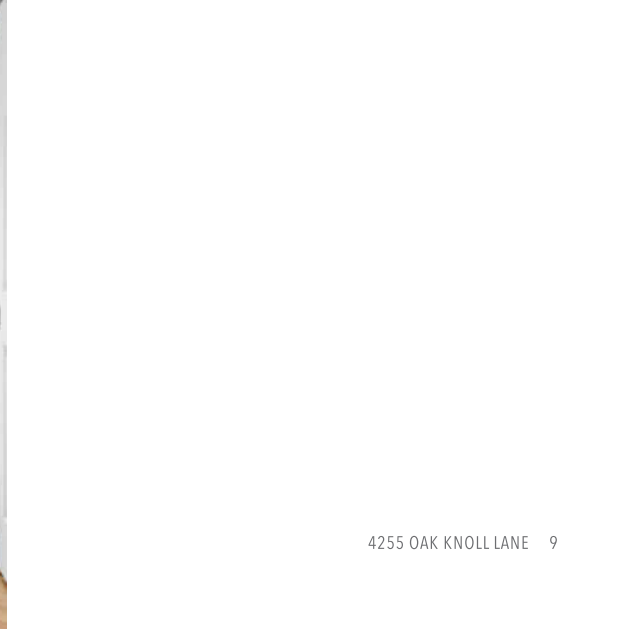
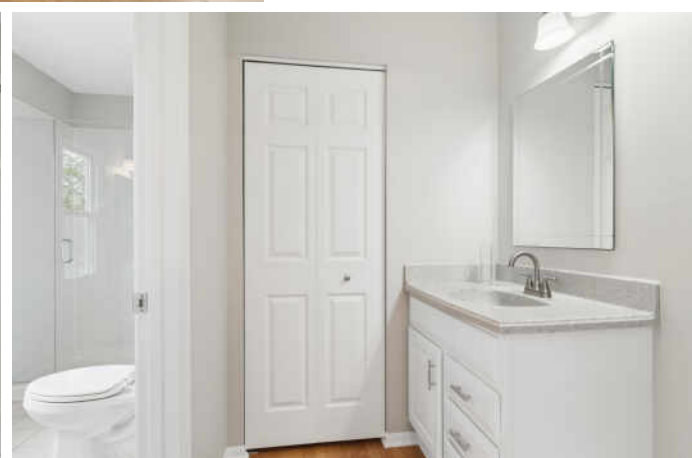
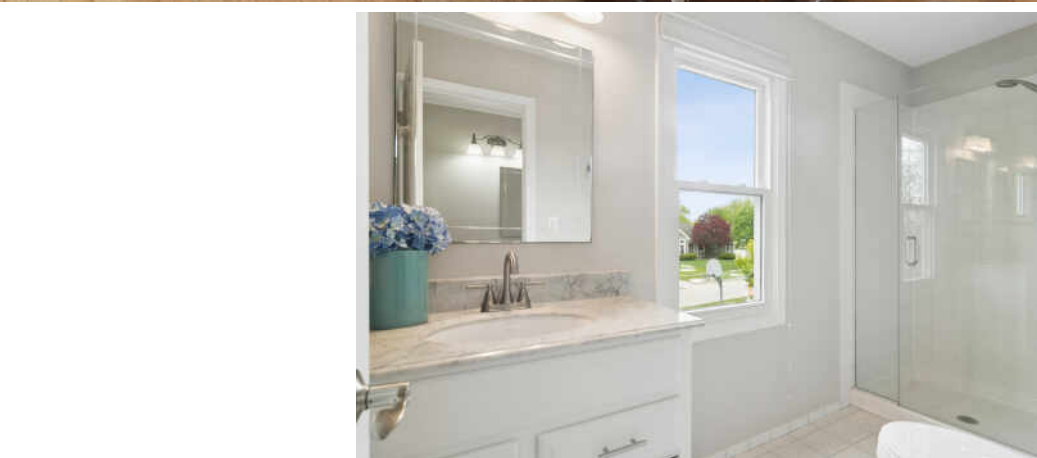
TAXES: \$9,834

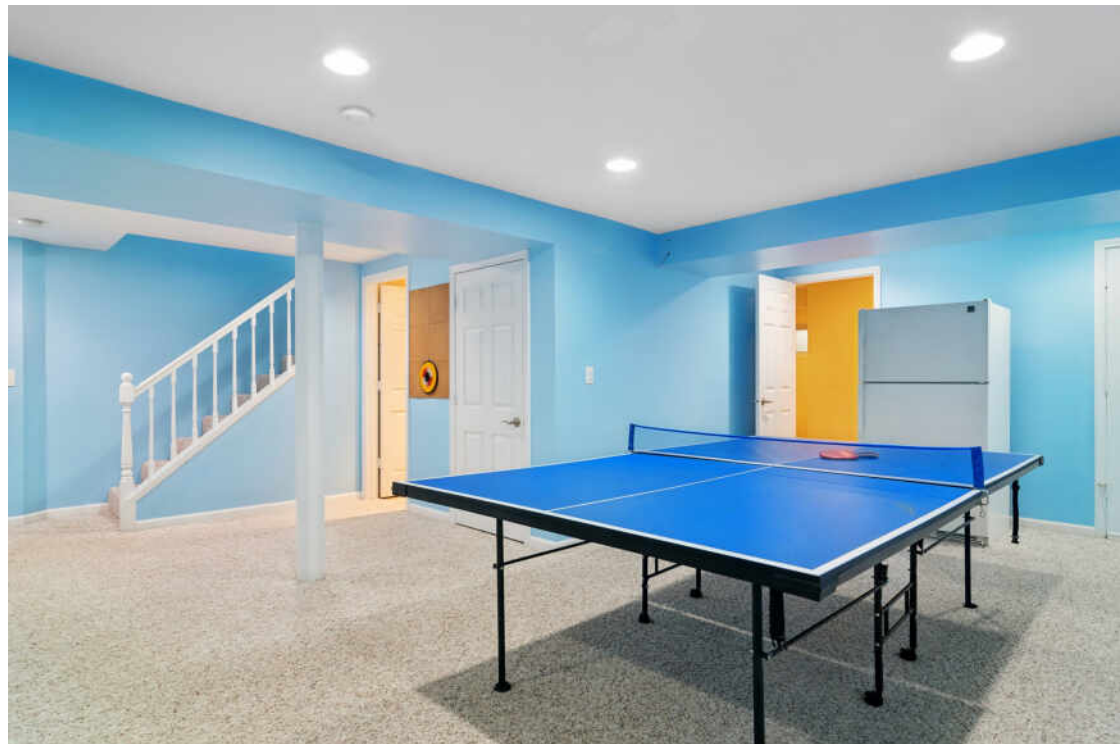
AMAZING POPLAR HILLS NORTH HOME

Amazing 4 bedroom, 3 1/2 bath home in prominent Poplar Hills North subdivision. Meticulously maintained and recently painted interior, this home boasts an open floorplan with gleaming hardwood flooring on the main and 2nd levels. The formal living room leads to the separate dining room with gorgeous wainscoting accents, crown molding and oversized windows allowing in plenty of natural light. Step into the recently updated kitchen highlighting brand new, elegant quartz counters, refreshed cabinets/hardware, newer SS Samsung appliances, loads of cabinet space and a walk-in pantry. Spacious family room and eating space offers sliding doors to the 2-level refinished deck and expansive, fully fenced yard featuring a large garden area with organic soil. Upstairs there are 3 generous sized bedrooms all with hardwood flooring. The primary bedroom has a walk in closet and remodeled bath with marble vanity and tiled shower. Finished basement with huge recreation room, additional bedroom and another full bath perfect for hosting guests. Other recent updates include: 2026: Kitchen remodel, new light fixtures, freshly painted. 2025: New Driveway, Porch, Shutters, Refinished Deck. 2024: Roof, Fence, Furnace. 2023: SS Samsung appliances. 2019: New windows. Fantastic location with easy access to nearby shopping, restaurants, parks, expressway and top-rated Barrington schools! Welcome Home!











TREE-LINED STREETS, ABUNDANT GREEN SPACE, AND AMPLE RECREATIONAL ACTIVITIES CHARACTERIZE THE VILLAGE OF **HOFFMAN ESTATES.**

The community offers easy access to nearby nature attractions such as the Spring Valley Nature Center & Heritage Farm in Schaumburg and the Deer Grove Forest Preserve in Palatine. Meanwhile, Bridges of Poplar Creek Country Club features an 18-hole golf course with over 6,000 yards of fairways and greens. Golf aficionados also take to the Hilldale Golf Club and Highland Woods Golf Course.

The village is most notably home to the Now Arena, providing sports, musical, and theatrical entertainment throughout the year. Residents also enjoy trying different cuisines at Hoffman Estates' many restaurants.

In the summertime, locals and visitors gather at the Seascapes Family Aquatic Center, where they can swim, dig in the sand, and go down any of the four water slides. Other recreational facilities include the Triphahn Community Center & Ice Arena, Willow Recreation Center, and the Club at Prairie Stone.

Hoffman Estates is located along I-90 and has access to major regional roadways such as Illinois Routes 58, 59, 62, and 72. Commuters are also served by two Metra rail lines, the Union Pacific Northwest Line and the Milwaukee District West Line.



VASI KOUFIS

(847) 942-5933

VASI@ATPROPERTIES.COM

WWW.REALPROSGROUP.COM



@properties®

CHRISTIE'S
INTERNATIONAL REAL ESTATE