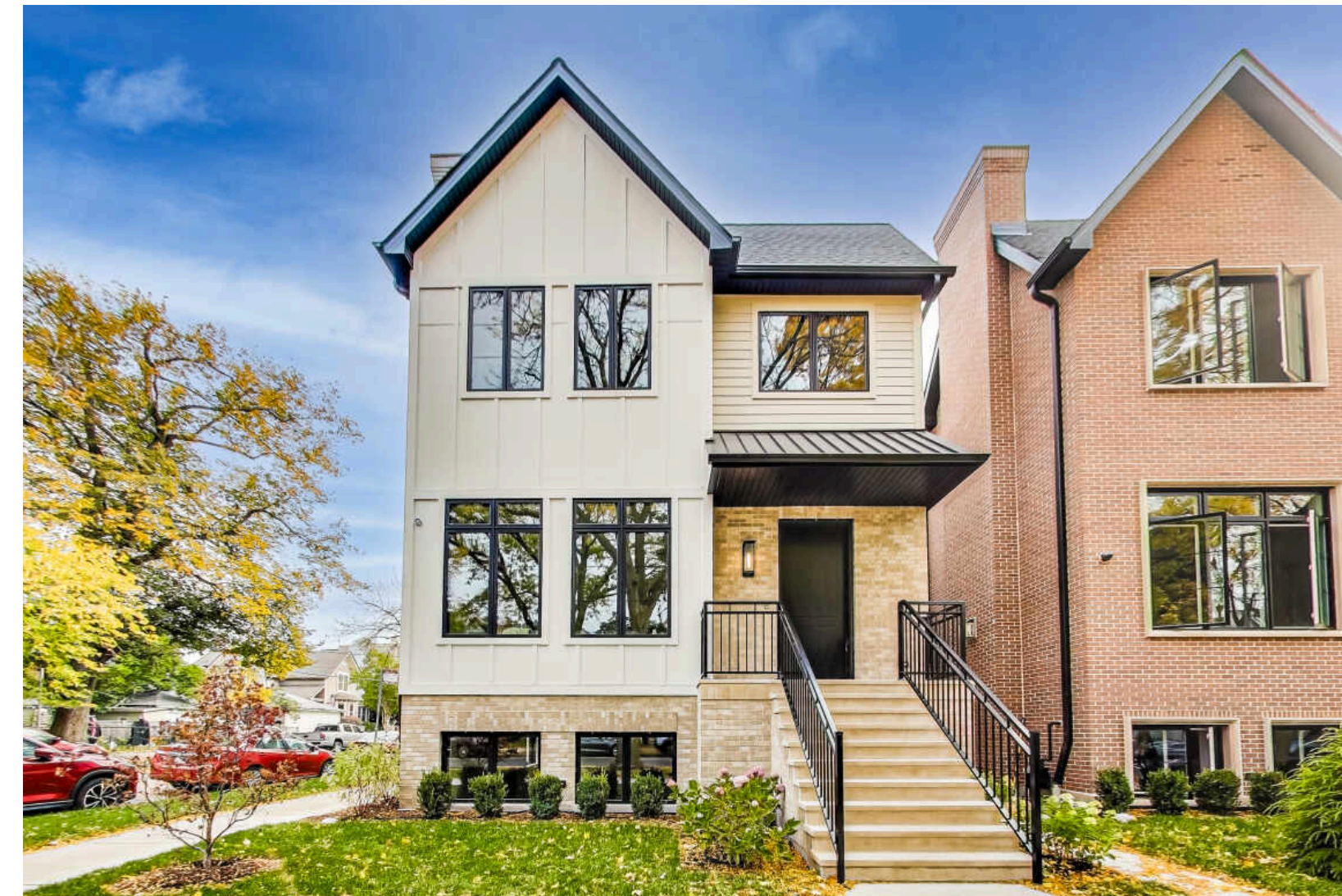


4323 N GREENVIEW AVENUE GRACELAND WEST

4323 N GREENVIEW AVENUE • GRACELAND WEST



TOM MORAN BROKER

773.592.2468 mobile
773.472.0200 office
tmoran@atproperties.com

4323 N GREENVIEW AVENUE • GRACELAND WEST





4323 N GREENVIEW AVENUE

ROOM DIMENSIONS

Living Room	19'x13'
Family Room	26'x16'
Dining Room	19'x13'
Kitchen	26'x12'
Primary Bedroom	17'x16'
Second Bedroom	13'x12'
Third Bedroom	13'x12'
Fourth Bedroom	12'x11'

FEATURES

Gorgeous and Just Completed!!!! Super sunny and amazing wide and open/spacious new construction single family home on a corner 33' lot on tree lined Greenview in the heart of Graceland West. This home streams with sunlight from all sides and offers an unmatched wide floorplan and luxury finishes. The main floor offers a spacious living room/dining room with double pass thru into the massive eat in kitchen/family room. Oversized island and separate eat-in dining area with custom cabinetry and commercial appliances. The large family room with gas fireplace and built in custom cabinetry with a back wall of windows provides amazing light and ambiance. Back access to the yard offers a large mudroom leading to the landscaped rear yard with snowmelt, built in kitchen and heated 3 plus car garage with roof deck. Upstairs offers 4 large bedrooms, all with attached baths and a true laundry room with 2 washers and 2 dryers. The primary with cathedral ceilings has a huge walk-in closet and spa like bath. The lower level provides 3 additional bedrooms with options for gym/office/playroom while still offering a massive family room. Hardiboard and brick exterior



TOM MORAN BROKER

773.592.2468 mobile
773.472.0200 office

tmoran@atproperties.com



LIVING





DINING

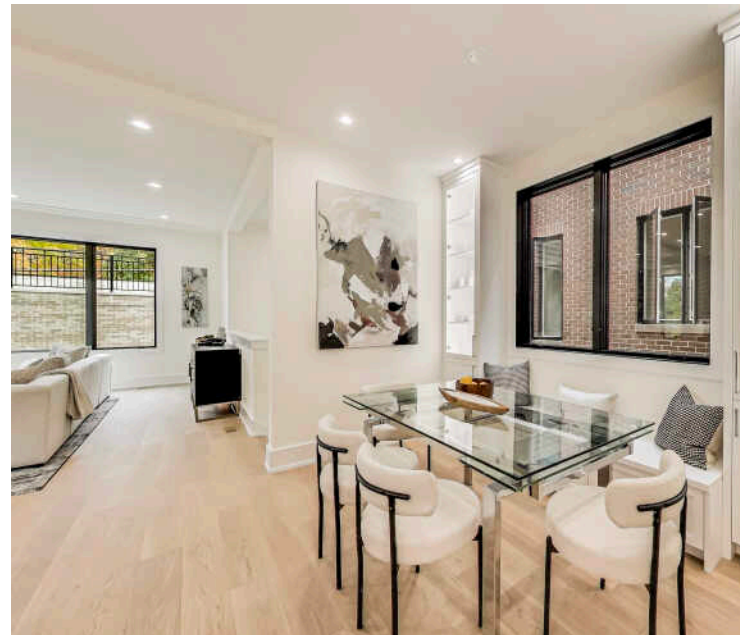




CORRIDOR



KITCHEN



BREAKFAST



FAMILY





PRIMARY BEDROOM





WALK-IN CLOSET



ENSUITE







LAUNDRY



CORRIDOR





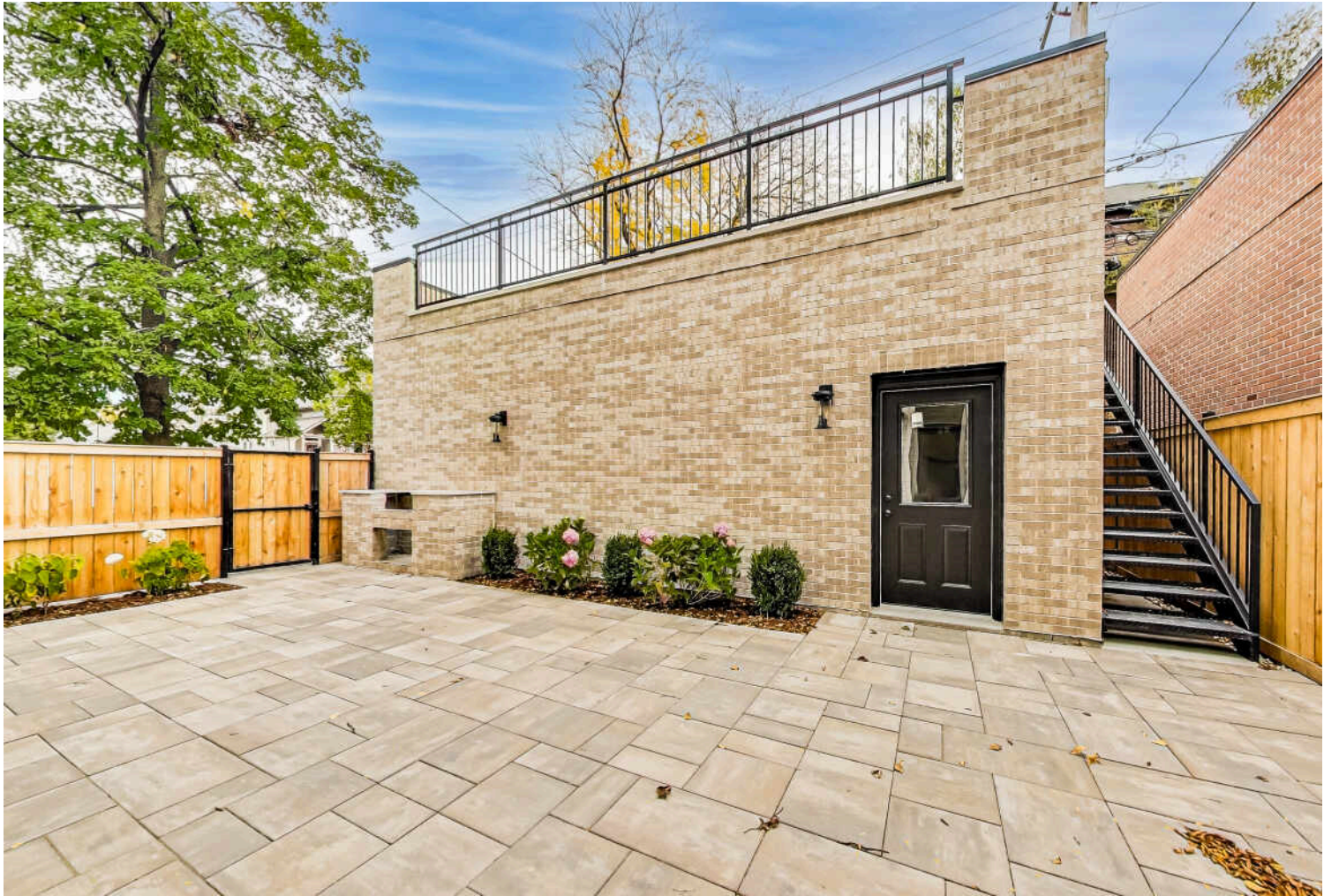
RECREATION



BAR



OFFICE/BEDROOM



PATIO

@properties® | CHRISTIE'S
INTERNATIONAL REAL ESTATE

Leading REAL ESTATE
COMPANIES
OF THE WORLD®

LP
LUXURY
PORTFOLIO
INTERNATIONAL®

