

435 S POPLAR AVENUE
KANKAKEE



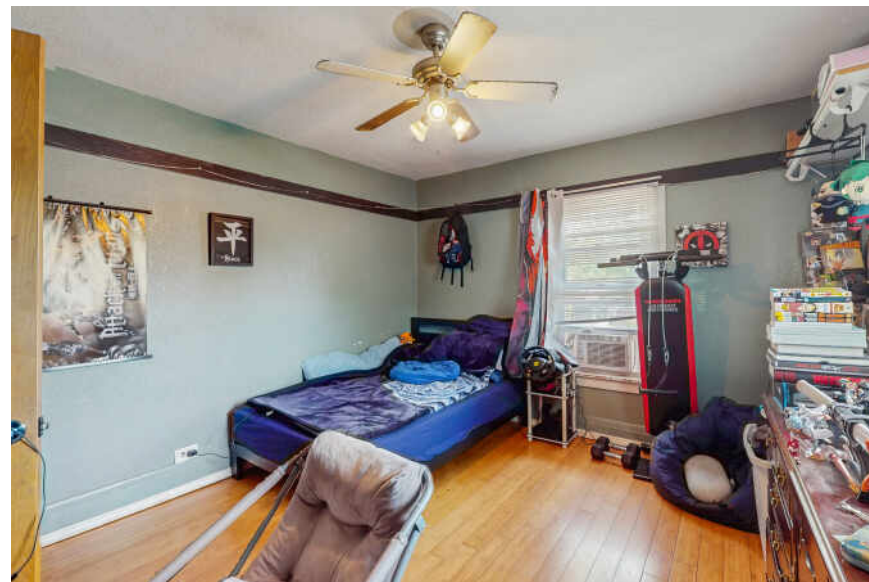
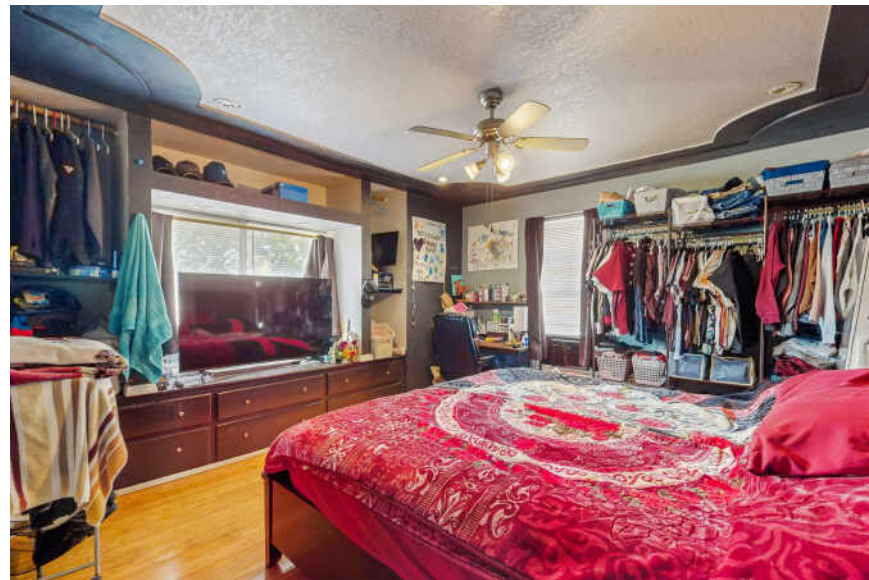


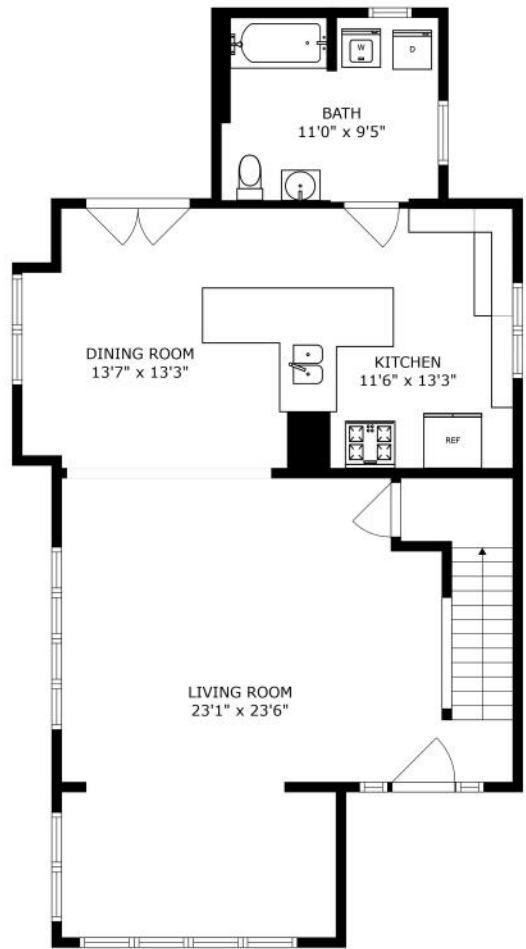
CHARMING 2-STORY HOME

Welcome to this spacious, two-story home, centrally located in Kankakee! With 4 generous bedrooms, 3 full bathrooms, a full basement, and a fenced-in backyard, there is plenty of room to grow. The main level features beautiful hardwood floors, large windows, a massive kitchen island, and a separate laundry room and bathroom off of the kitchen. French doors lead out to the back deck, which overlooks to fenced-in backyard with mature trees. Upstairs, you will find 4 bedrooms and a second full bathroom. Situated on a tree-lined street in a prime location close to the hospital, schools, convenient stores, and public transit, this house offers charm and convenience. Ready for its new owners to bring it to its fullest potential!

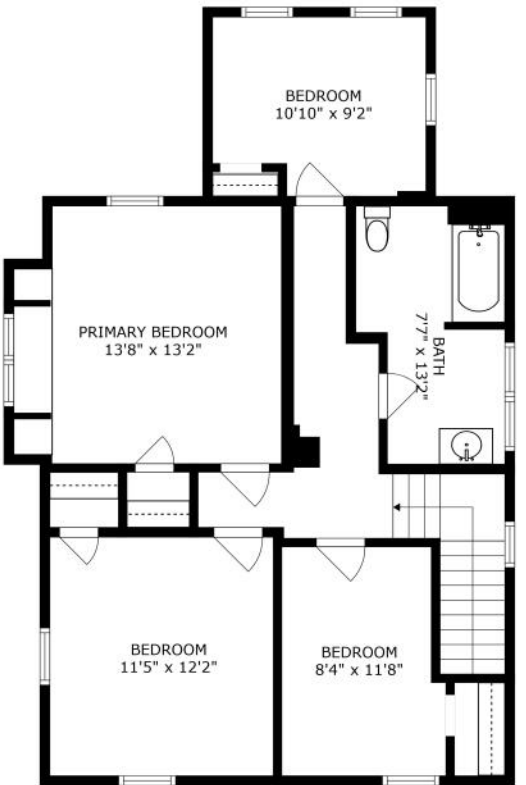
4 BEDROOM
3 BATH





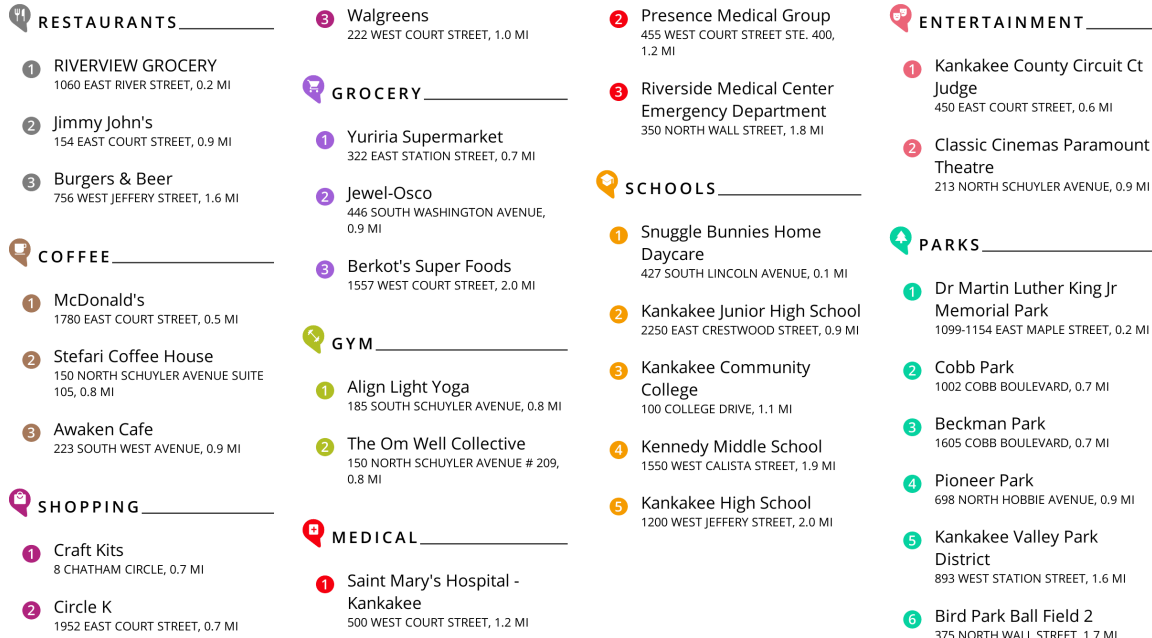


FLOOR 1



FLOOR 2

SIZES AND DIMENSIONS ARE APPROXIMATE, ACTUAL MAY VARY.

[illegible]



KATIE MAUER

312-888-0350

KATIEMAUER@ATPROPERTIES.COM

@MAUERREALESTATE



All specifications, features, designs, price, assessments, taxes and materials are subject to change without notice. Depicted floor plans and architectural renderings are only an artist's impression.

