

441 W ROSLYN PLACE #2E
LINCOLN PARK





ROOM DIMENSIONS

LIVING ROOM : 19' × 13'
DINING ROOM : 13' × 10'
KITCHEN : 17' × 13'
PRIMARY BEDROOM : 21' × 13'
SECOND BEDROOM : 12' × 10'
THIRD BEDROOM : 10' × 13'
DECK : 35' × 5'

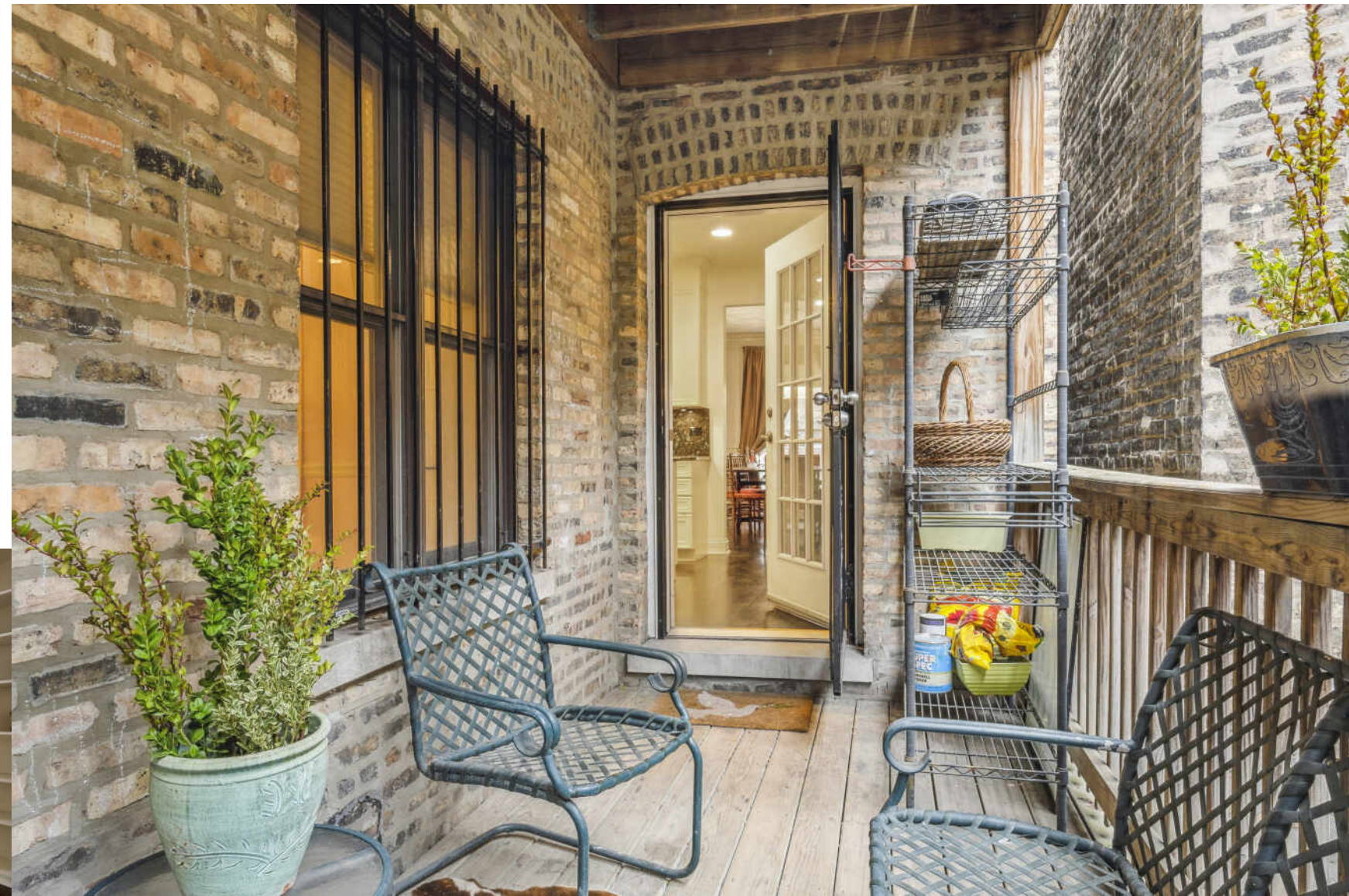
3 BEDROOM
2.1 BATH

Lincoln Park: This charming 3 bedroom, 2.5 bath home is situated on a one-way tree-lined street in a vintage, boutique building in the heart of Lincoln Park. Greeted by a stunning foyer the home opens to a beautiful living & separate dining area with a bay window that provides great natural light, has custom built-ins, gas fireplace, architectural pillars, and custom drapery. The apartment also features in-unit laundry and espresso hardwood floors throughout. The gourmet kitchen is designed for those who love to cook, featuring a GE microwave, GE double wall oven with warming tray, wine fridge, Thermador five burner gas cooktop, Subzero refrigerator, Bosch dishwasher, granite countertops, under-cabinet lighting, tons of prep-space and island that sits three. As well as a deck ideal for grilling & relaxing. The generous-sized primary bedroom easily fits a king size bed, has two walk-in closets, an en-suite with double-bowl vanity, jacuzzi tub w/separate stand-up shower, custom lighting, mirrors, fixtures, and plantation shutters. The second & third bedrooms are nicely sized and both offer custom closets and are adjacent to the second bath. Additional storage locker/bike storage in the building. Nearby - North Pond Restaurant, Lincoln Park Zoo, Mon Ami Gabi restaurant, Starbucks, Clark street shops and restaurants, easy access to LSD, the lake-front and downtown famous Mag Mile. Schools - Alcott, L&L Academy & Preschool, Francis Parker & Latin School of Chicago. Tenant required to carry renters insurance. \$1,500/\$2,000 non-refundable move-in/out fee in lieu of security deposit. Limit of 2 dogs - Pet fee of \$100 a month per dog. This is a non-smoking apartment.











LINCOLN PARK RESIDENTS HAVE IT ALL - FROM THE ARTS TO ITS FAMED ZOO - RIGHT IN THEIR BACKYARD.

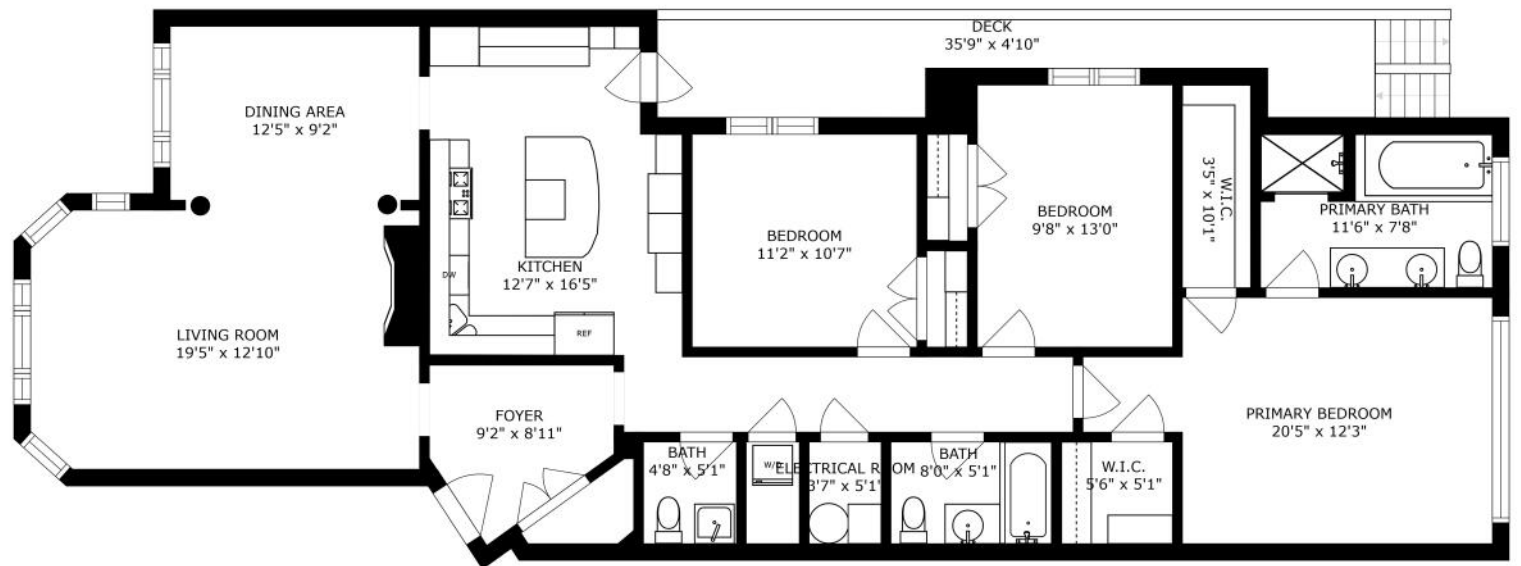
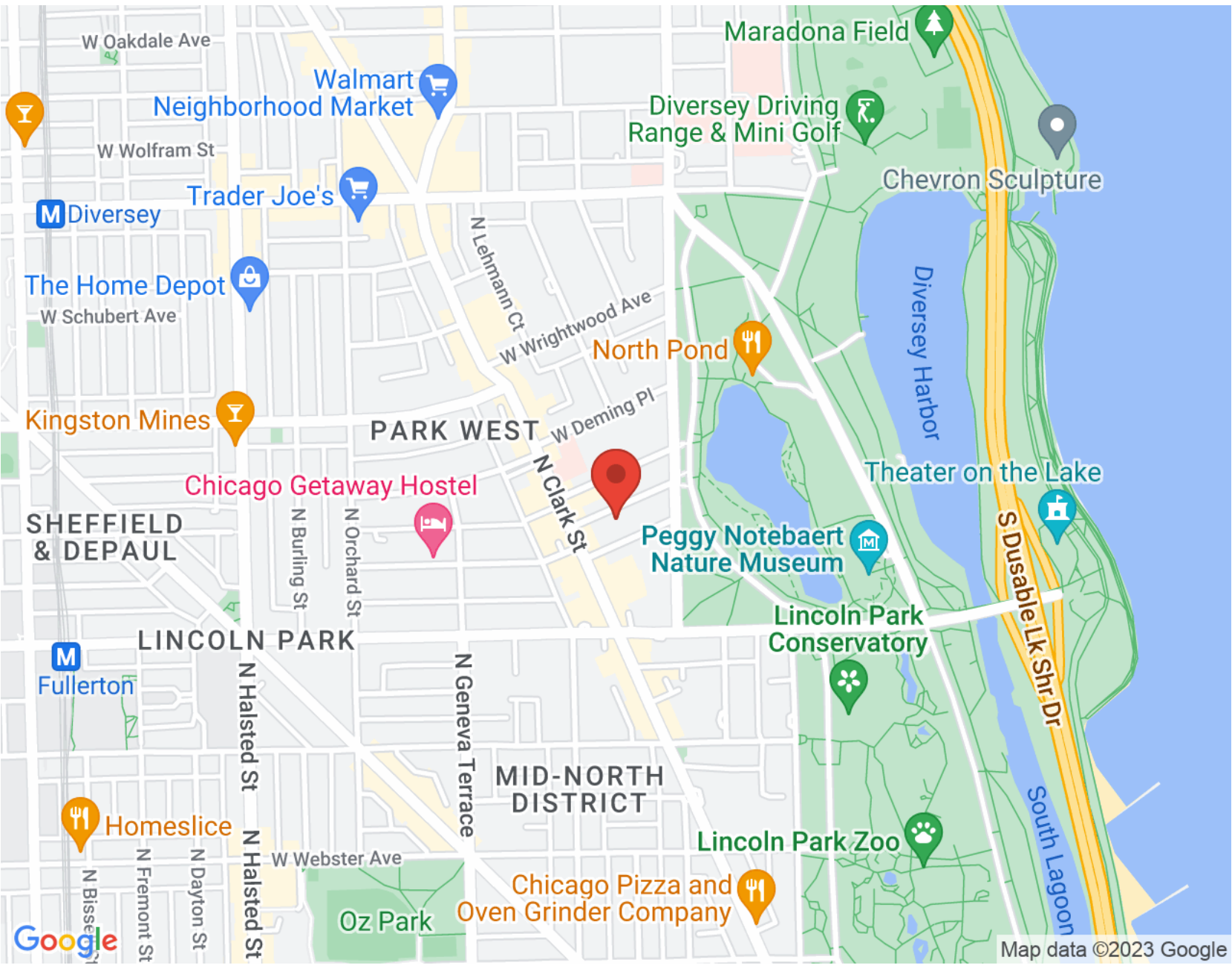
The neighborhood includes quiet tree-lined residential blocks, DePaul University, and two major museums in addition to the Lincoln Park Zoo, one of the country's oldest zoos. There's also a wide array of entertainment, eateries, and hotspots.

An evening in Lincoln Park might include seeing a play at the acclaimed Steppenwolf Theatre and dining at a Michelin-rated restaurant or a quaint neighborhood café. Sports fans will find as many dive bars with the game on as foodies will find fine-dining restaurants with al-fresco seating.

Lincoln Park is just as delightful by day. Residents are close to the lakefront and North Avenue Beach, parks, farmers markets, festivals, and countless shops, ranging from upscale boutiques on Armitage to larger retailers at the Clybourn Corridor.

Housing stock ranges from smaller townhomes and vintage condominiums to rehabs and new construction. Buyers around DePaul University can find loft condominiums in converted factories and warehouses. On its eastern edge, Lincoln Park features beautiful vintage brownstones along with high-rises with breathtaking views of the lake, park, North Pond Nature Sanctuary, and city skyline.

Located just two miles from downtown, Lincoln Park offers residents a quick commute to work. Public transportation abounds, with the CTA's Brown and Red lines serving the neighborhood in addition to several bus routes and Lake Shore Drive.



SIZES AND DIMENSIONS ARE APPROXIMATE, ACTUAL MAY VARY.



KIM KERBIS, ABR, CRS, GRI, CNE, SRES, AHWD

(312) 339-1849

KIMKERBIS@ATPROPERTIES.COM

WWW.LAKEEFFECTCHICAGO.COM



MICHAEL TATAR

872-333-1838

MICHAELTATAR@ATPROPERTIES.COM

WWW.MICHAELTATAR.COM