

4447 N MALDEN STREET #G
SHERIDAN PARK





ROOM DIMENSIONS

LIVING ROOM : 28' x 11'

DINING ROOM : 19' x 7'

KITCHEN : 11' x 11'

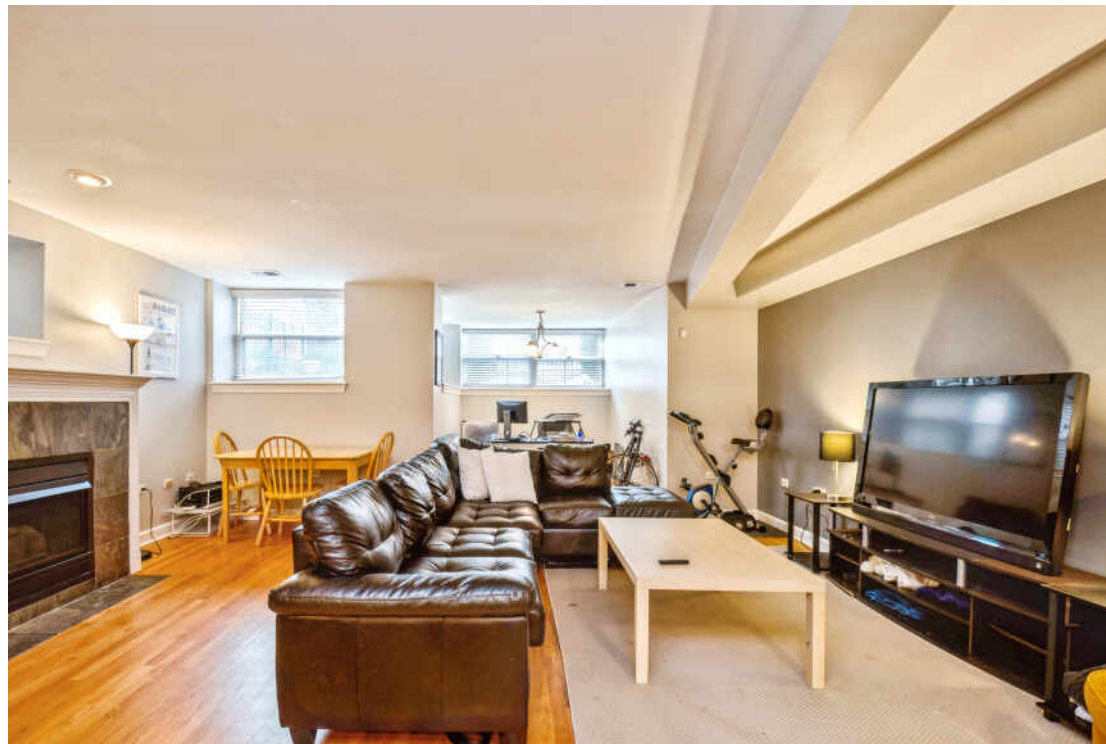
PRIMARY BEDROOM : 19' x 12'

SECOND BEDROOM : 17' x 10'

THIRD BEDROOM : 11' x 11'

SPACIOUS 3 BED / 2 BATH CONDO ON MALDEN!

With a large, open floorplan this has all of the space you need. Well cared for building with great landscaping on a quiet cul-de-sac street, it also includes central air and in-unit washer dryer. Large kitchen that opens to the living/dining area with lots of prep space, granite countertops and SS appliances. Hardwood floors throughout with good storage plus a gas fireplace. Walkable to restaurants/stores like Target/Aldi and more, as well as the Wilson Red Line stop. Prime Location Boasts Lake, Shopping, Restaurants, Grocery Stores, Brand New Wilson Stop (200m Project), and Transportation - All Within Walking Distance!! Easy Street Parking!



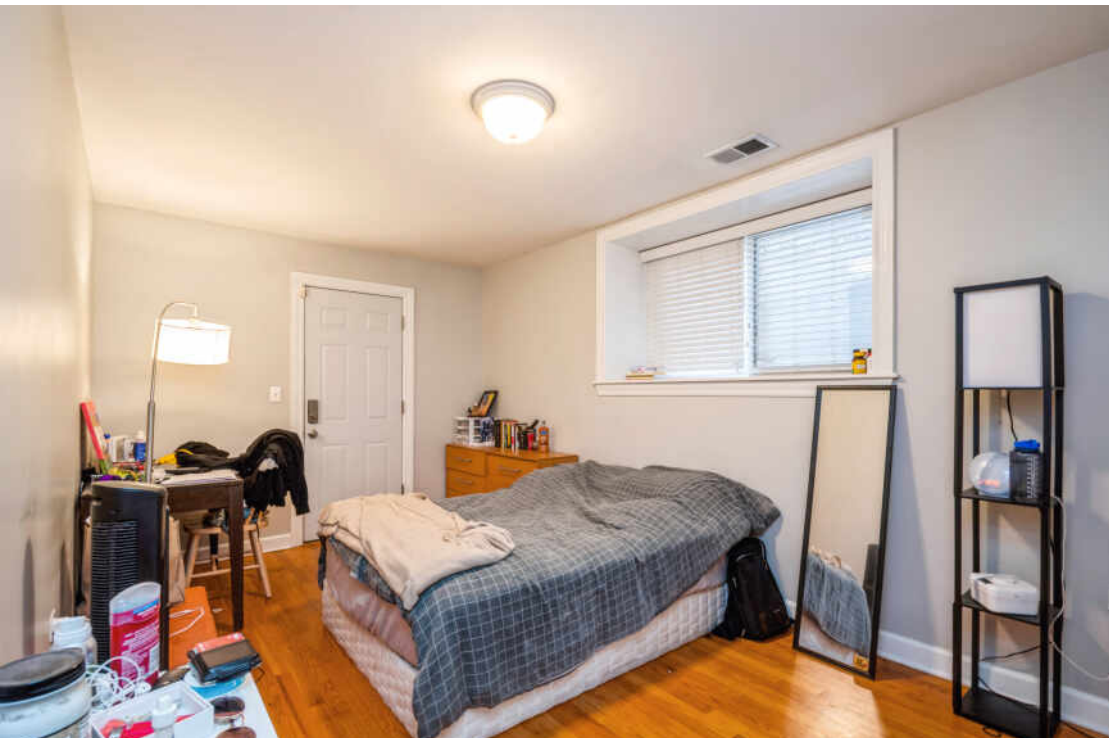
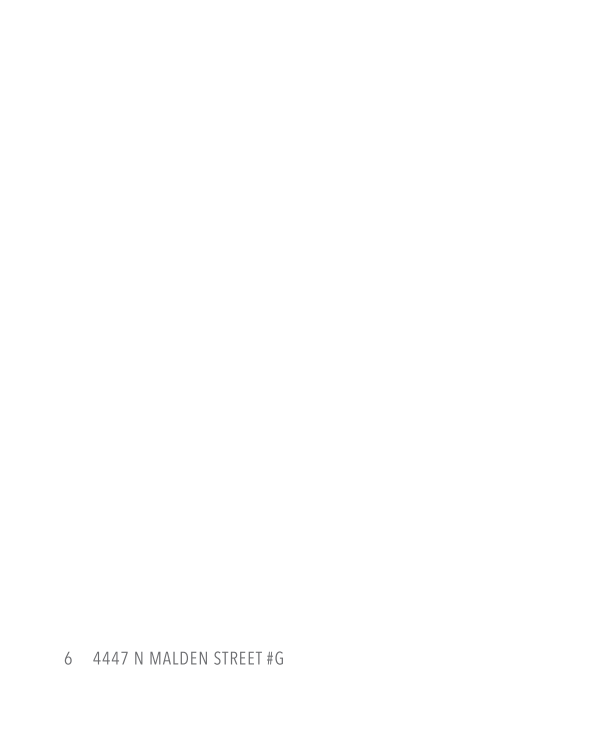
3 BEDROOM

2 BATH

TAXES: \$5,558

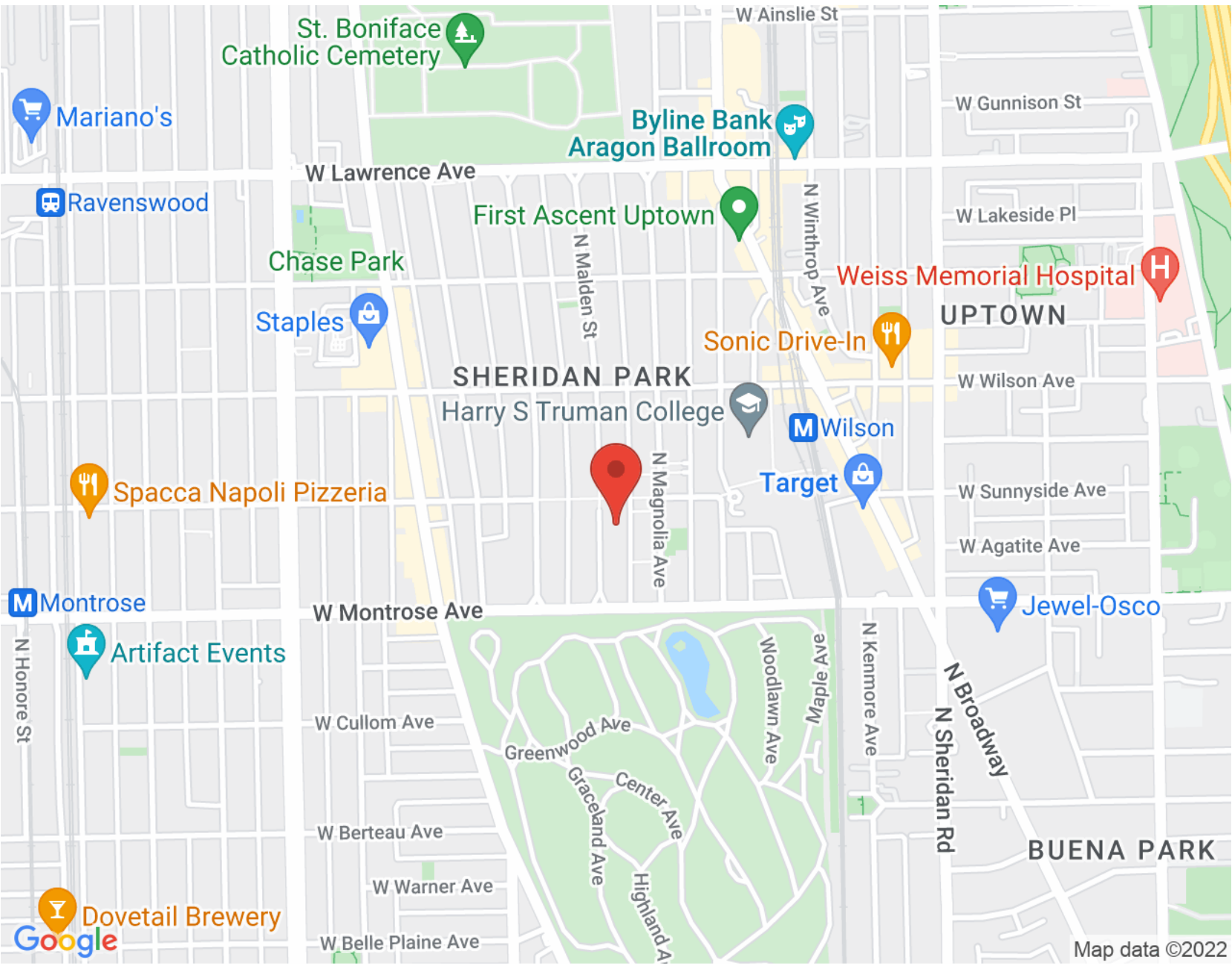
ASSESSMENTS: \$203 / MONTH







SIZES AND DIMENSIONS ARE APPROXIMATE, ACTUAL MAY VARY.



NOTES _____



FLORA | BLAHNIK

(312) 339-7212

(312) 576-6118

ANTHONYFLORA@ATPROPERTIES.COM

LBLAHNIK@ATPROPERTIES.COM

KARA CUNNINGHAM

(219) 671-1215

KARA@ATPROPERTIES.COM



4447MALDENG.INFO