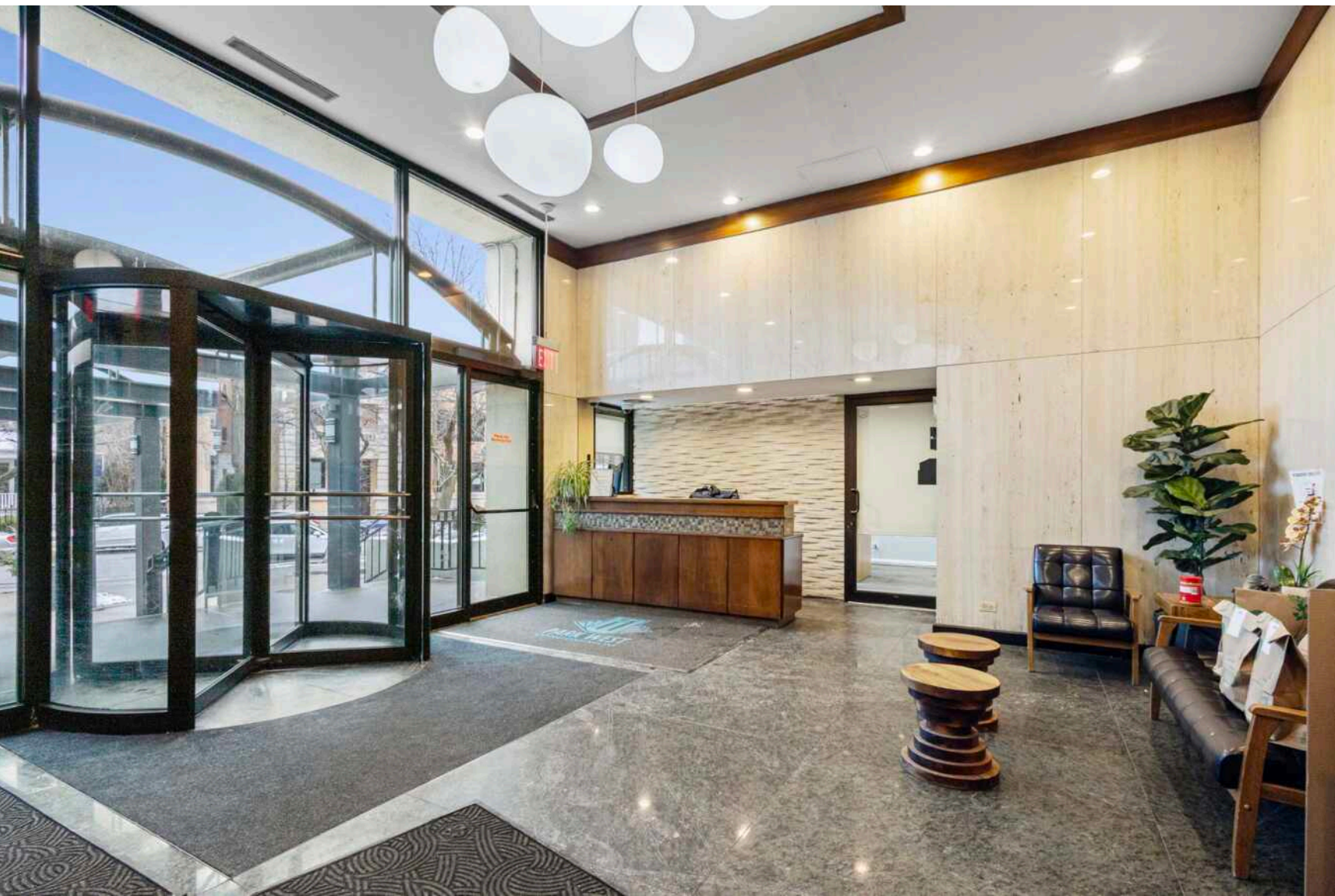


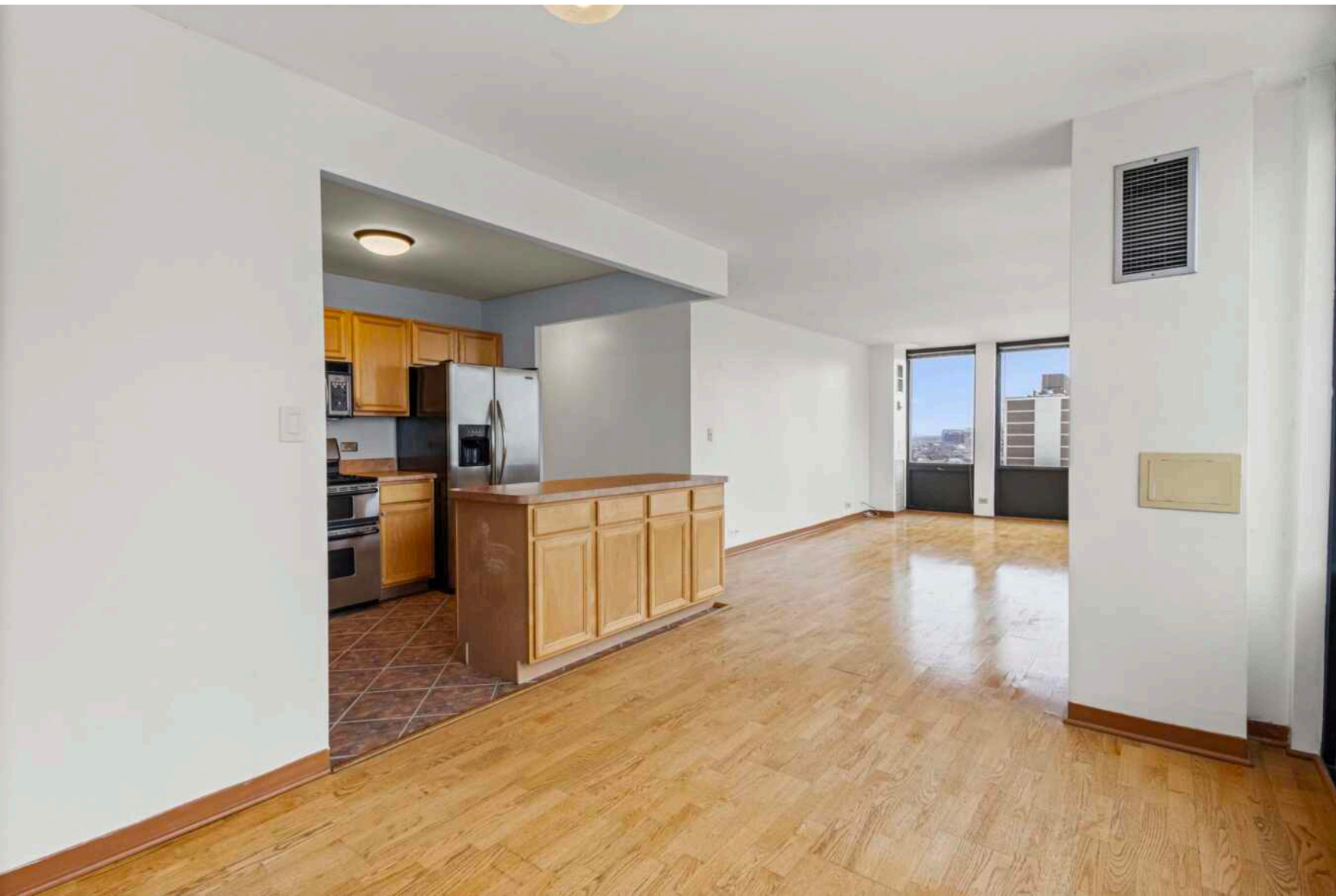
444 W FULLERTON PARKWAY #1303
LINCOLN PARK



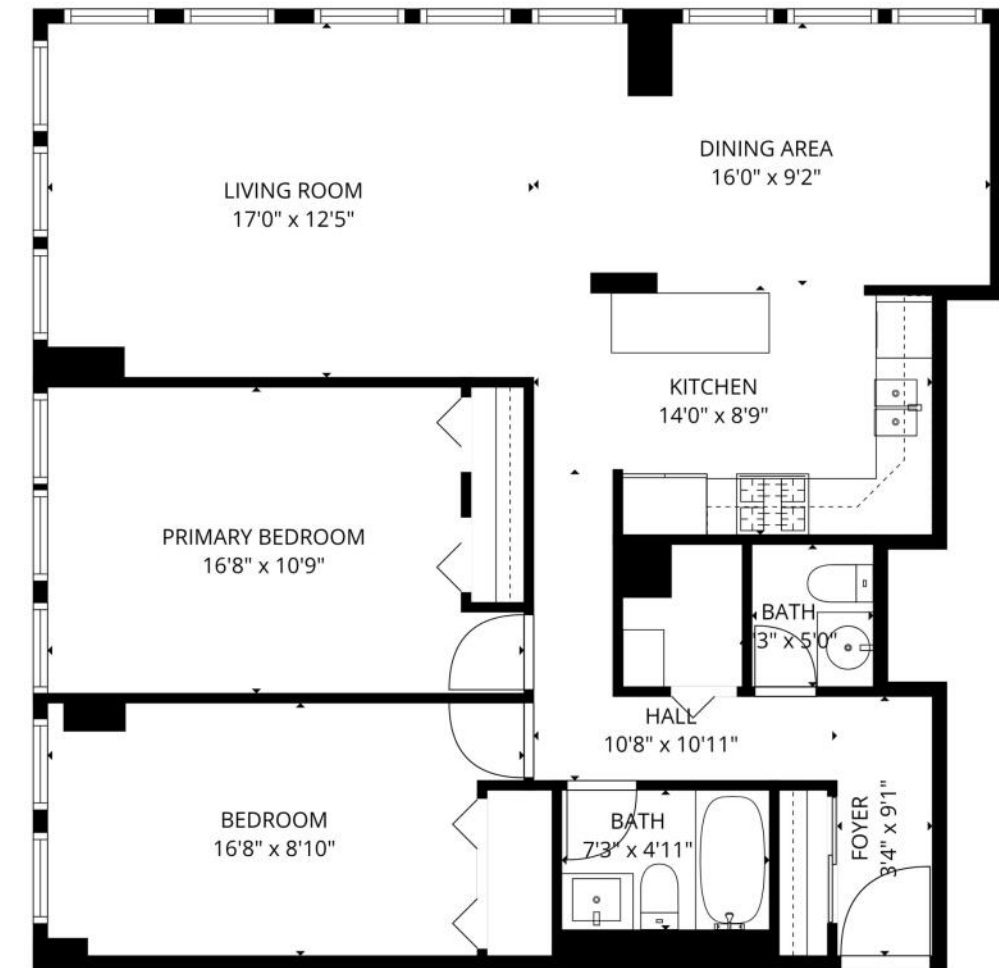
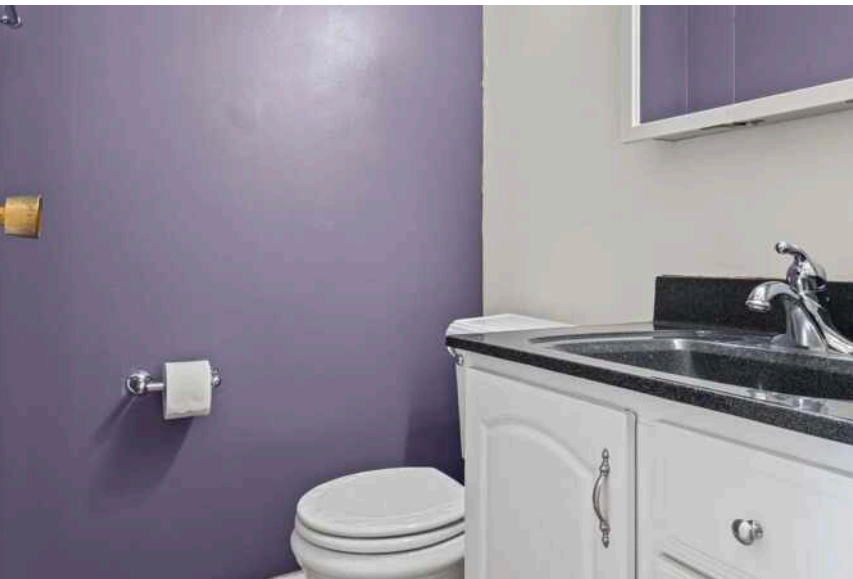


2 BEDROOM
1.1 BATH

Welcome home to this beautifully maintained 2-bedroom, 1.5-bath condo in a sought-after Lincoln Park high-rise, offering resort-style amenities and an exceptional location. Enjoy partial lake views and abundant natural light that create a calm and inviting living space. The well-designed floor plan features spacious living and dining areas, generously sized bedrooms, and the convenience of a half bath for guests. Large windows frame the city and lake glimpses, enhancing the open, airy feel throughout. Residents enjoy access to a pool and sundeck, perfect for relaxing or entertaining. Tandem parking for 2 cars included. The building is professionally managed, providing comfort and ease of living. Ideally located just steps from the lakefront, parks, and scenic trails, and surrounded by great retail, popular restaurants, and cafes. Excellent transportation options make commuting effortless and put the best of the city within easy reach. A fantastic opportunity to enjoy Lincoln Park living with lake access, amenities, and views.







TOTAL: 1018 sq. ft
 1st floor: 1018 sq. ft
 EXCLUDED AREAS: WALLS: 69 sq. ft
SIZES AND DIMENSIONS ARE APPROXIMATE, ACTUAL MAY VARY.



© VHT STUDIOS





LINCOLN PARK RESIDENTS HAVE IT ALL – FROM THE ARTS TO ITS FAMED ZOO – RIGHT IN THEIR BACKYARD.

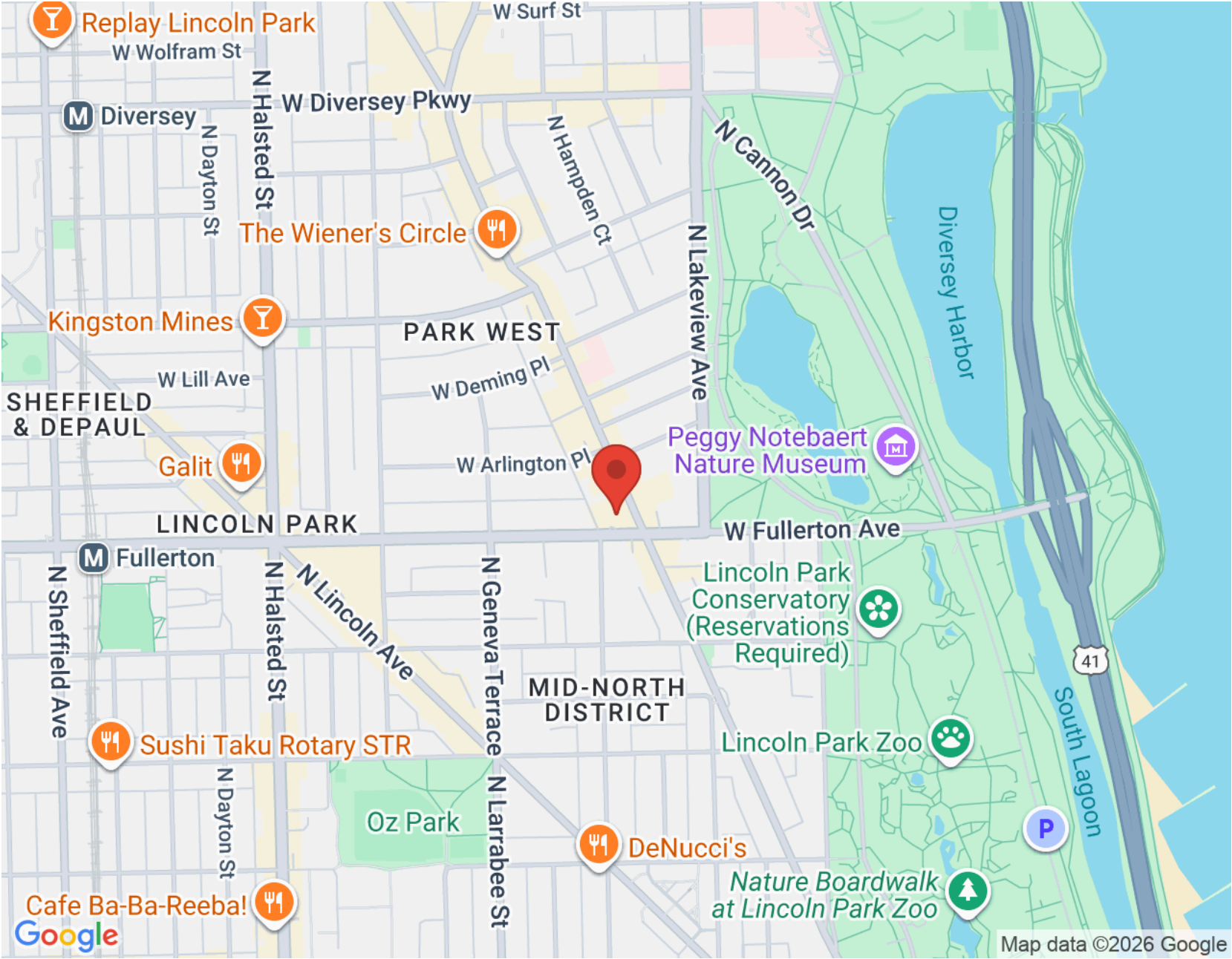
The neighborhood includes quiet tree-lined residential blocks, DePaul University, and two major museums in addition to the Lincoln Park Zoo, one of the country's oldest zoos. There's also a wide array of entertainment, eateries, and hotspots.

An evening in Lincoln Park might include seeing a play at the acclaimed Steppenwolf Theatre and dining at a Michelin-rated restaurant or a quaint neighborhood café. Sports fans will find as many dive bars with the game on as foodies will find fine-dining restaurants with al-fresco seating.

Lincoln Park is just as delightful by day. Residents are close to the lakefront and North Avenue Beach, parks, farmers markets, festivals, and countless shops, ranging from upscale boutiques on Armitage to larger retailers at the Clybourn Corridor.

Housing stock ranges from smaller townhomes and vintage condominiums to rehabs and new construction. Buyers around DePaul University can find loft condominiums in converted factories and warehouses. On its eastern edge, Lincoln Park features beautiful vintage brownstones along with high-rises with breathtaking views of the lake, park, North Pond Nature Sanctuary, and city skyline.

Located just two miles from downtown, Lincoln Park offers residents a quick commute to work. Public transportation abounds, with the CTA's Brown and Red lines serving the neighborhood in addition to several bus routes and Lake Shore Drive.



NOTES _____



DEBI WEINBERG

(847) 997-9934

DEBIWEINBERG@ATPROPERTIES.COM

DEBI WEINBERG

DW

RESIDENTIAL



CHRISTIE'S
INTERNATIONAL REAL ESTATE