

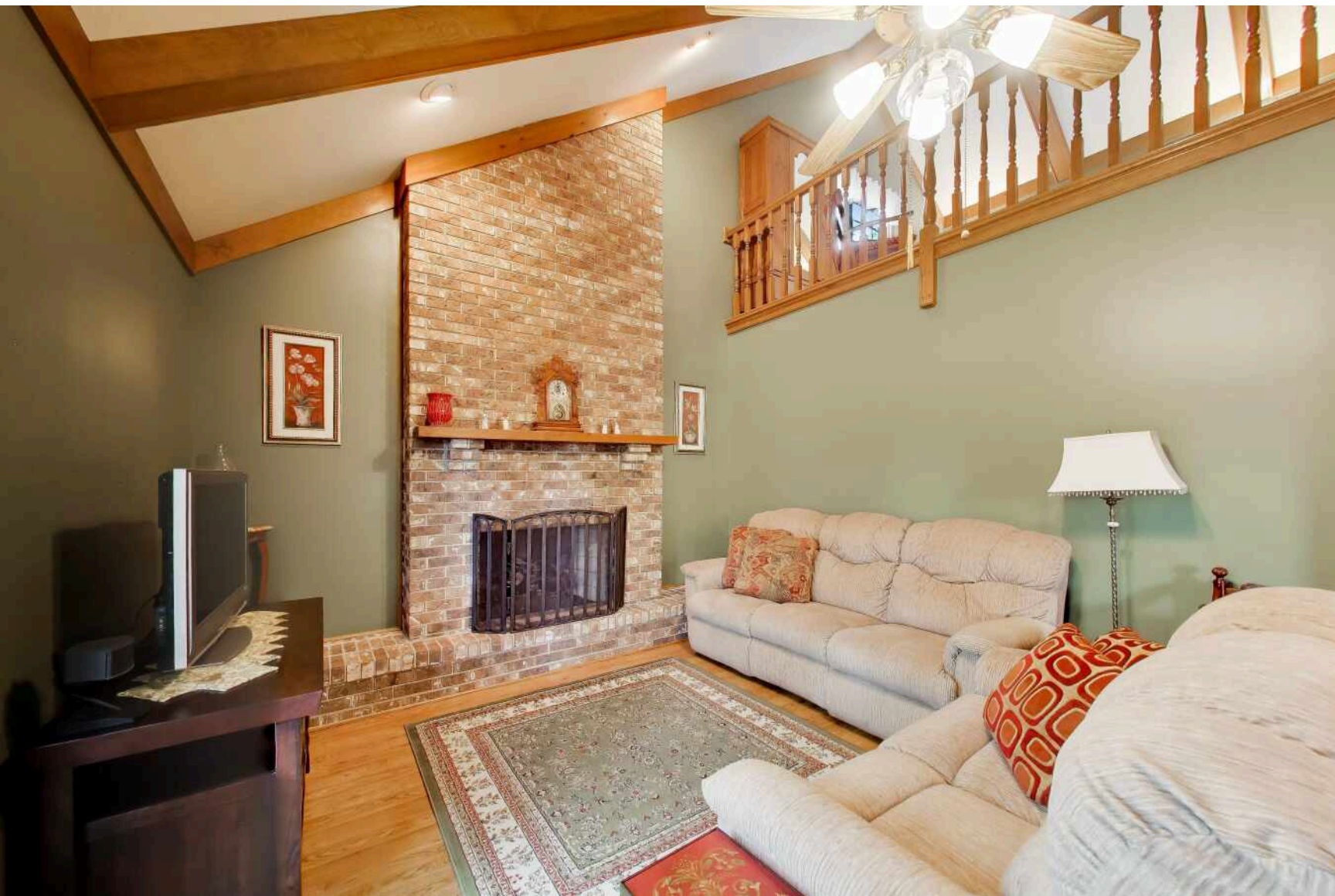
4505 CONCORDE PLACE  
LISLE



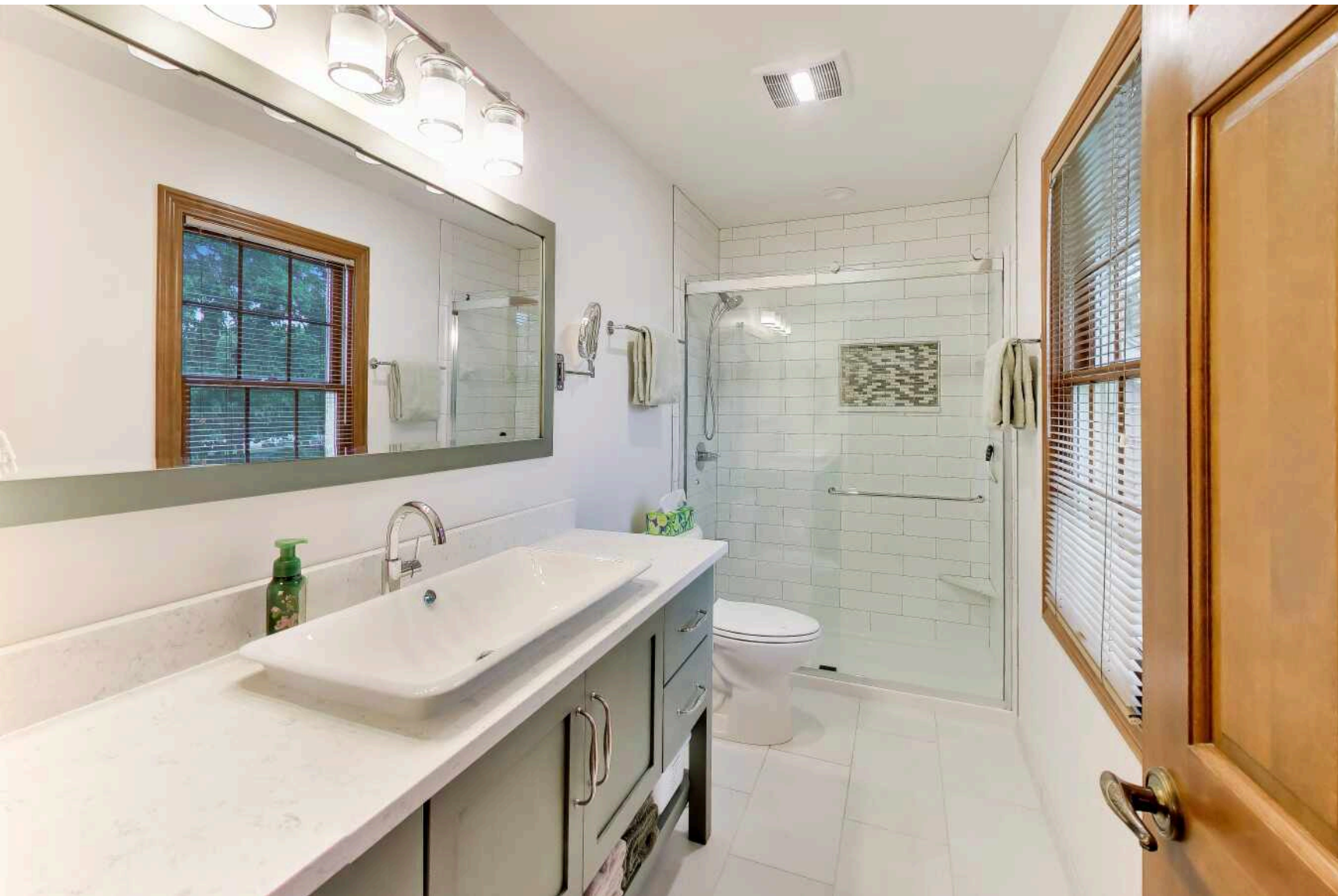


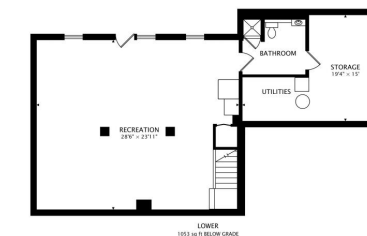
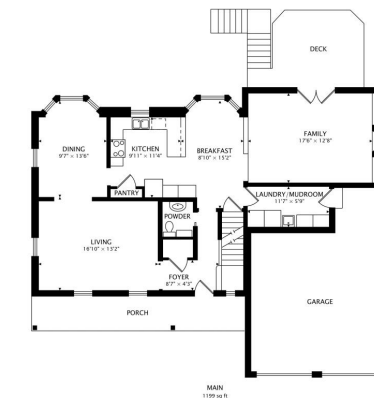
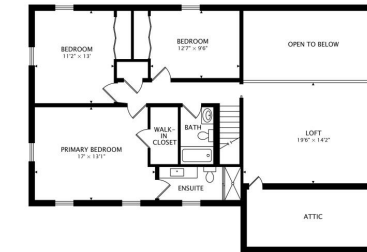
**4 BEDROOM**  
**3.1 BATH**

Impeccably maintained and truly move-in ready, this stunning home is tucked away on a quiet cul-de-sac in Lisle, offering the perfect balance of comfort, thoughtful updates, and an unbeatable location. Featuring 4 spacious bedrooms, 3 full bathrooms, and a half bath, this home includes a finished walk-out basement, providing exceptional flexibility for today's lifestyle. Ideal for multi-generational living, a guest suite, or a private retreat, the walk-out design offers seamless access to the backyard and abundant natural light. The fourth bedroom also offers added versatility as a home office or den, perfect for remote work or quiet space. Major updates have already been completed, giving you peace of mind for years to come. Recent improvements include a new roof, new HVAC system (2024), water heater (2024), new sump pump (2026), and new stove and microwave (2024). Bathrooms were tastefully remodeled in 2020, blending modern finishes with timeless style. Outdoor living shines with a refreshed deck (2024), a new privacy fence (2025), and a brick paver patio with an outdoor firepit-perfect for entertaining or relaxing evenings. Inside, you'll find generous living spaces, a functional layout, and pride of ownership throughout. The walk-out basement truly elevates the home, expanding your living space while connecting indoor comfort with outdoor enjoyment. New park walking distance with new playground equipment, walking paths, outdoor work-out area, and tennis courts! Conveniently located just minutes from train stations, major expressways, shopping, and dining, this home offers both everyday convenience and peaceful surroundings. Located within highly acclaimed District 203 schools, including Beebe Elementary, Jefferson Junior High, and Naperville North High School. This is a rare opportunity to own a beautifully cared-for home in a prime location-Award Winning School District 203, close to highways and Metra train systems.











## THEY DON'T CALL **LISLE** THE "ARBORETUM CITY" FOR NOTHING.

Naturally it's home to the famed Morton Arboretum, but that's not where the trail ends here. In fact, the community is also home to the Jurica-Suchy Nature Museum, the Museums at Lisle Station Park, and the award-winning PrairieWalk Pond.

The two-acre PrairieWalk Pond includes scenic overlooks, various paths, a play area, and wetlands. The nature park includes more than 100 varieties of native plants and wildlife including cranes, ducks, geese, turtles, frogs, fish, butterflies, and dragonflies.

The Garden Walk connects the park to downtown Main Street, which features nature-inspired colorful streetscapes and a dramatic fountain. Beyond the view, residents and visitors have a variety of local boutiques and eateries to enjoy.

It's no wonder Lisle was ranked by Money magazine as one of the 100 Best Places to Live. The community hosts several popular festivals including Lisle Cruise Nights when Main Street transforms into a massive block party throughout the summer. The village also hosts the popular Eyes to the Skies Hot Air Balloon Festival and Depot Days, which includes tours of the community's historic museums and working blacksmith shop. Located just off the Ronald Reagan Memorial Tollway, Lisle has a Metra station providing direct access to downtown Chicago.





## ANNA FATTORE

1 6308542780

6306340700

ANNAFATTORE@ATPROPERTIES.COM

**AF** Anna  
Fattore

**@properties** | **CHRISTIE'S**  
INTERNATIONAL REAL ESTATE