

**4517 HILLTOP DRIVE**  
MCHENRY







**ROOM DIMENSIONS**

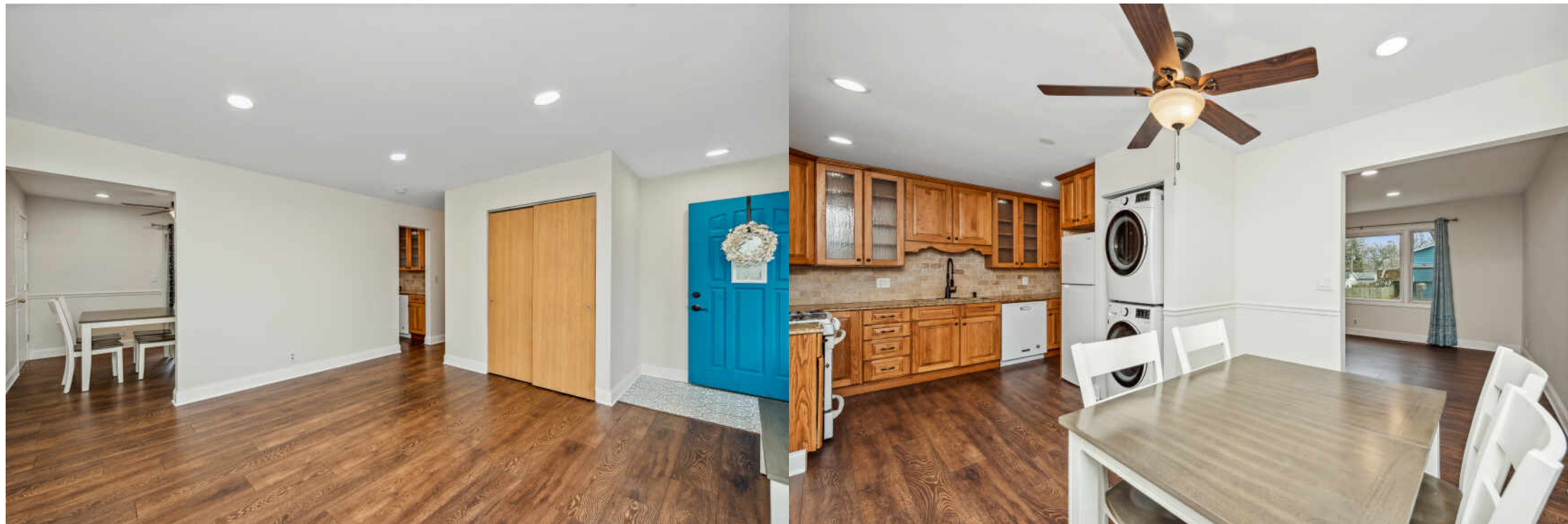
LIVING ROOM : 18' × 10'  
DINING AREA : 11' × 11'  
KITCHEN : 8' × 11'  
PRIMARY BEDROOM : 12' × 12'  
SECOND BEDROOM : 10' × 11'  
THIRD BEDROOM : 10' × 11'

**3 BEDROOM**  
**1.1 BATH**  
**TAXES: \$2,966.22**

**WELCOME HOME!**

Look no further! This very well maintained, move-in ready, 3 BD / 1.5 BA McHenry ranch comes complete with wood laminate flooring (2019) and fresh paint (2/2023) throughout, generously sized, flow-through living spaces, and a large, one-car garage - all on a corner lot. Enjoy cooking again in your bright, open kitchen, which features upgraded appliances (since 2019: stove, microwave, dishwasher), tile backsplash and custom cabinets. Binge watch your favorite series, or host friends and family in the open, expansive living room that boasts tons of natural light. The primary bedroom is made for relaxation and has its own half bath, large closet, and backyard views. Each of the other two bedrooms are nicely sized as well, and either would make a perfect home office. Out back is the ultimate retreat (a great spot for a cup of coffee, conversation, or barbecue), equipped with a sizable concrete patio, mature trees, and newer (within the last two years) privacy fence. Tucked away on a quiet street in sought-after McHenry and seconds from nature trails, this is exactly the serene atmosphere you've been searching for. Don't miss out on this fabulous opportunity! OTHER UPDATES: 2/2023: washer and dryer; 2019: large window in living room.

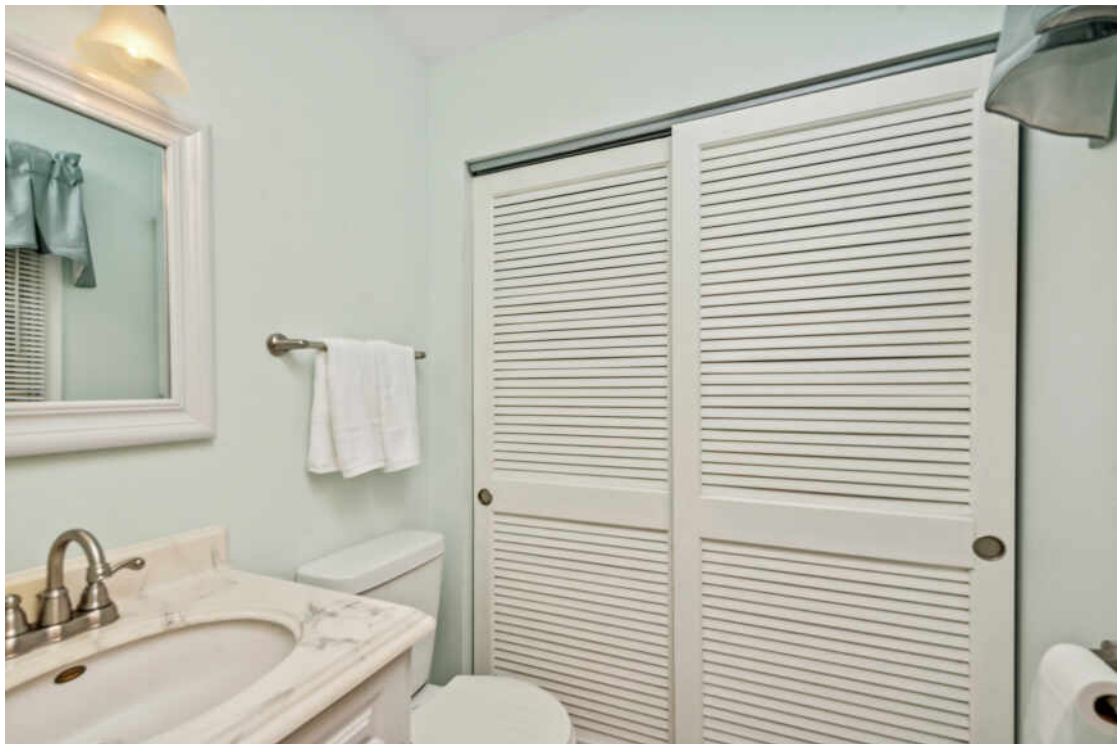
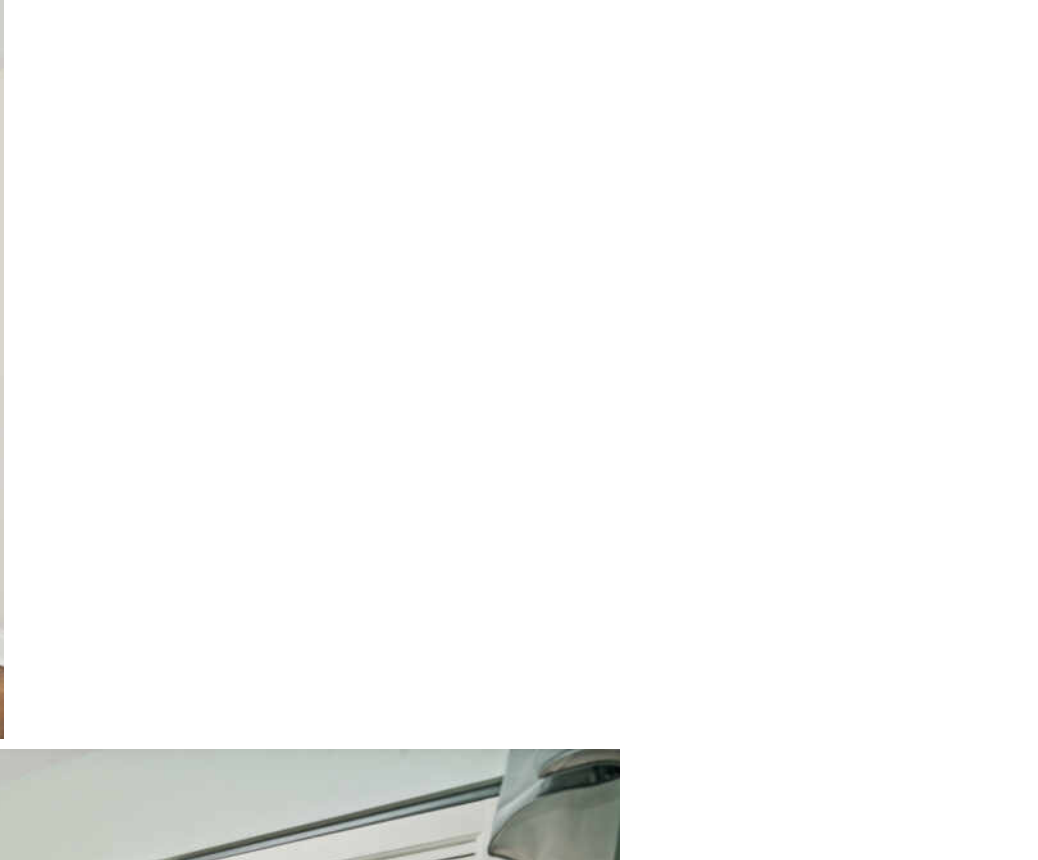




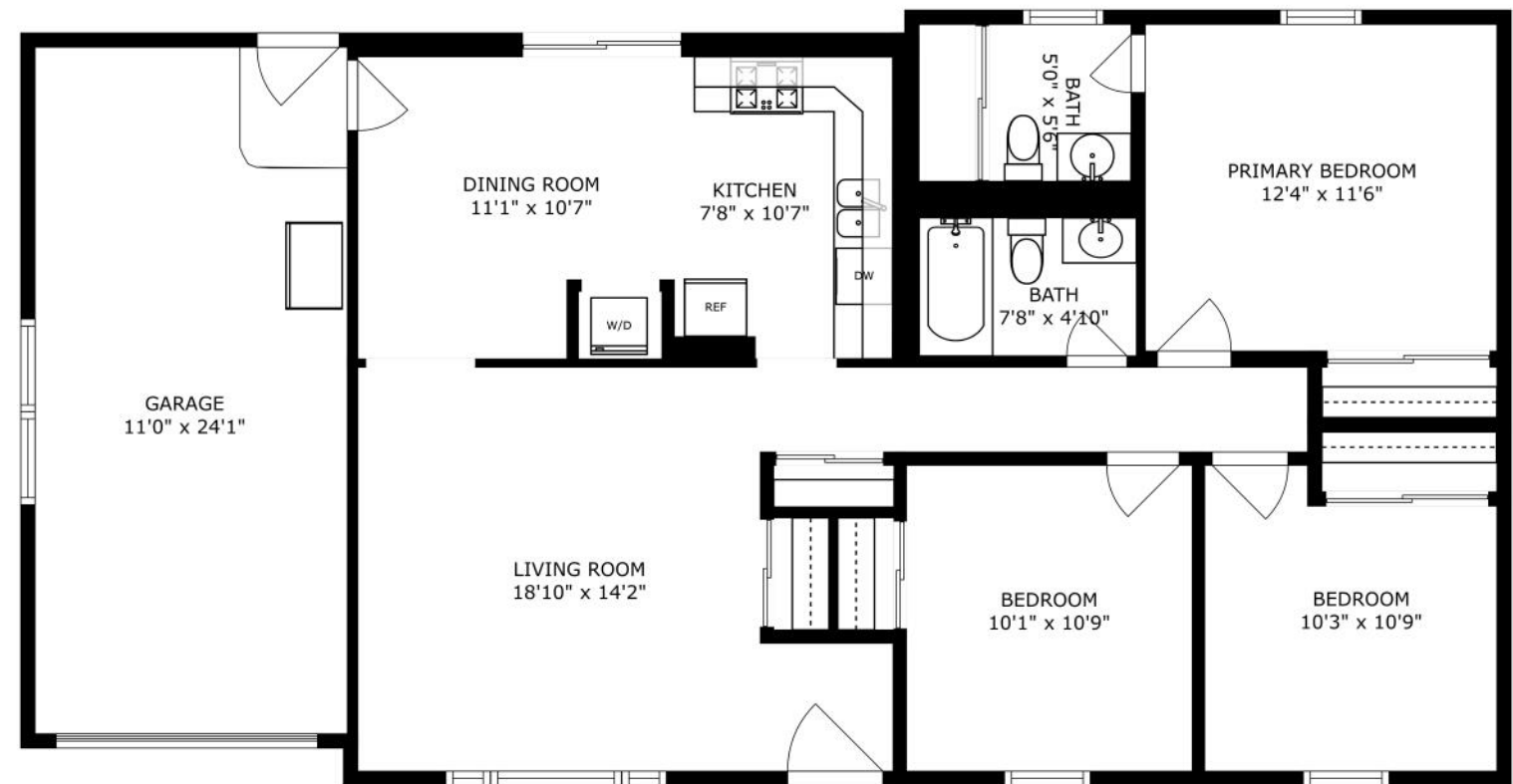












SIZES AND DIMENSIONS ARE APPROXIMATE, ACTUAL MAY VARY.





## KEVIN BAUM

C: 312-208-3004

O: 847-381-0300

KEVINBAUM@ATPROPERTIES.COM

WWW.CLOSEWITHKEVINBAUM.COM



CHRISTIE'S  
INTERNATIONAL REAL ESTATE

4517HILLTOPDRIVE.INFO

All specifications, features, designs, price, assessments, taxes and materials are subject to change without notice. Depicted floor plans and architectural renderings are only an artist's impression.

