



457 W DEMING PLACE LINCOLN PARK



@properties | CHRISTIE'S
INTERNATIONAL REAL ESTATE

LP LUXURY
PORTFOLIO
INTERNATIONAL

457 W DEMING PLACE • LINCOLN PARK

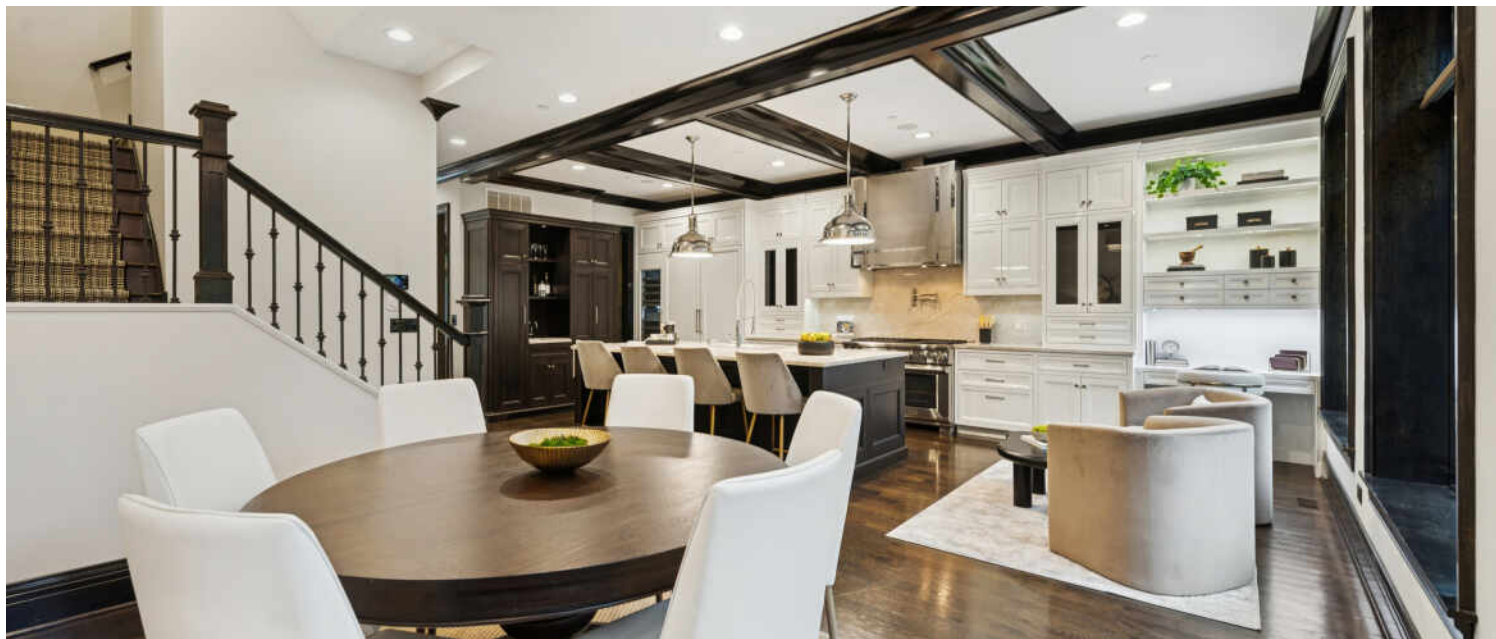


DOUG SMITH BROKER

773.531.0794 mobile
312.682.8500 office
dougsmith@atproperties.com

457 W DEMING PLACE • LINCOLN PARK





457 W DEMING PLACE

FEATURES

- 5200ft
- 5 bedroom
- 6 baths
- Elevator
- Roof Deck, side terrace and patio off living room
- Home office
- Parking for 5 cars
- Shared amenities with LP 2550 Lakeview
- Stunning kitchen with walk in pantry



DOUG SMITH BROKER

773.531.0794 mobile
312.682.8500 office

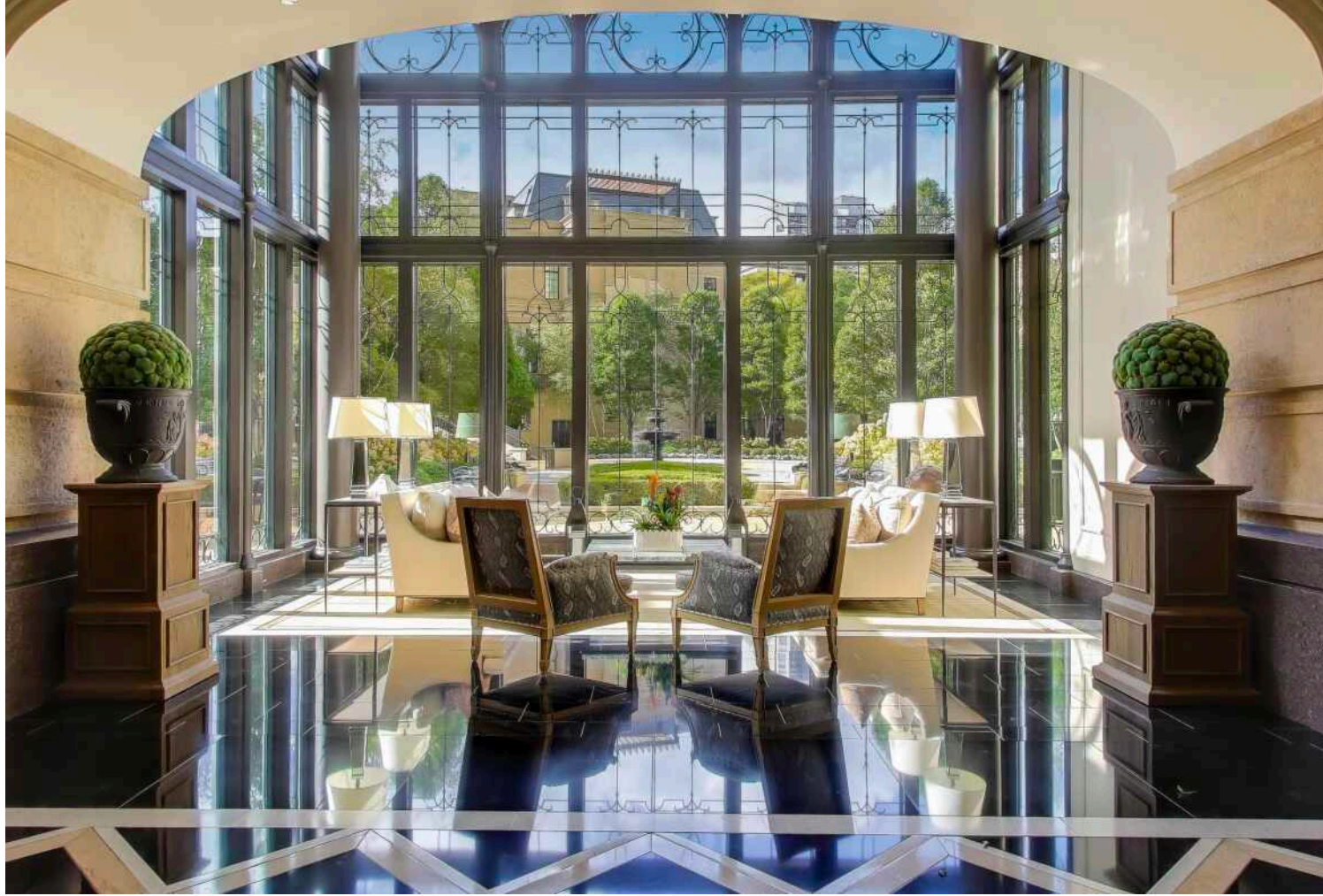
dougsmith@atproperties.com



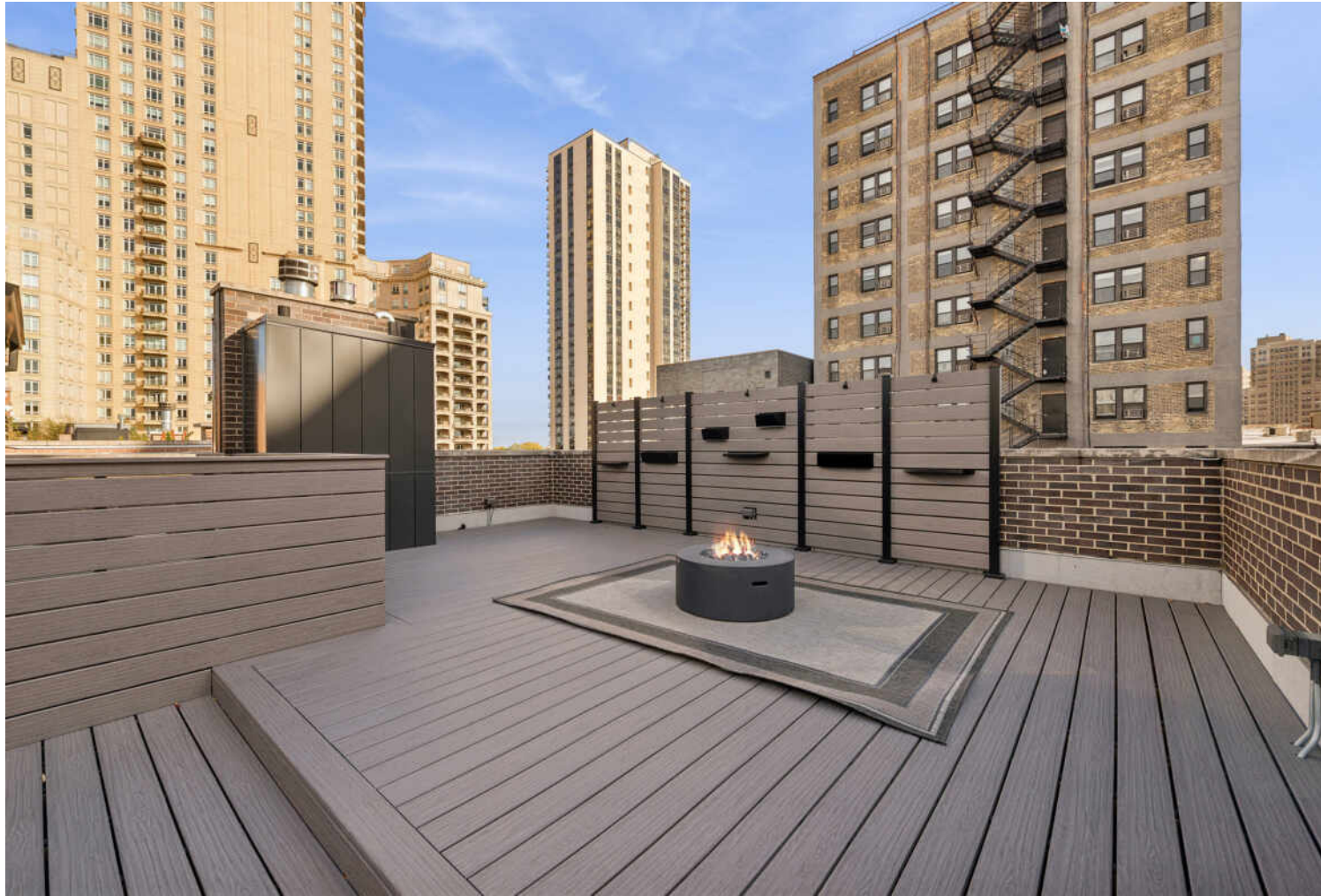














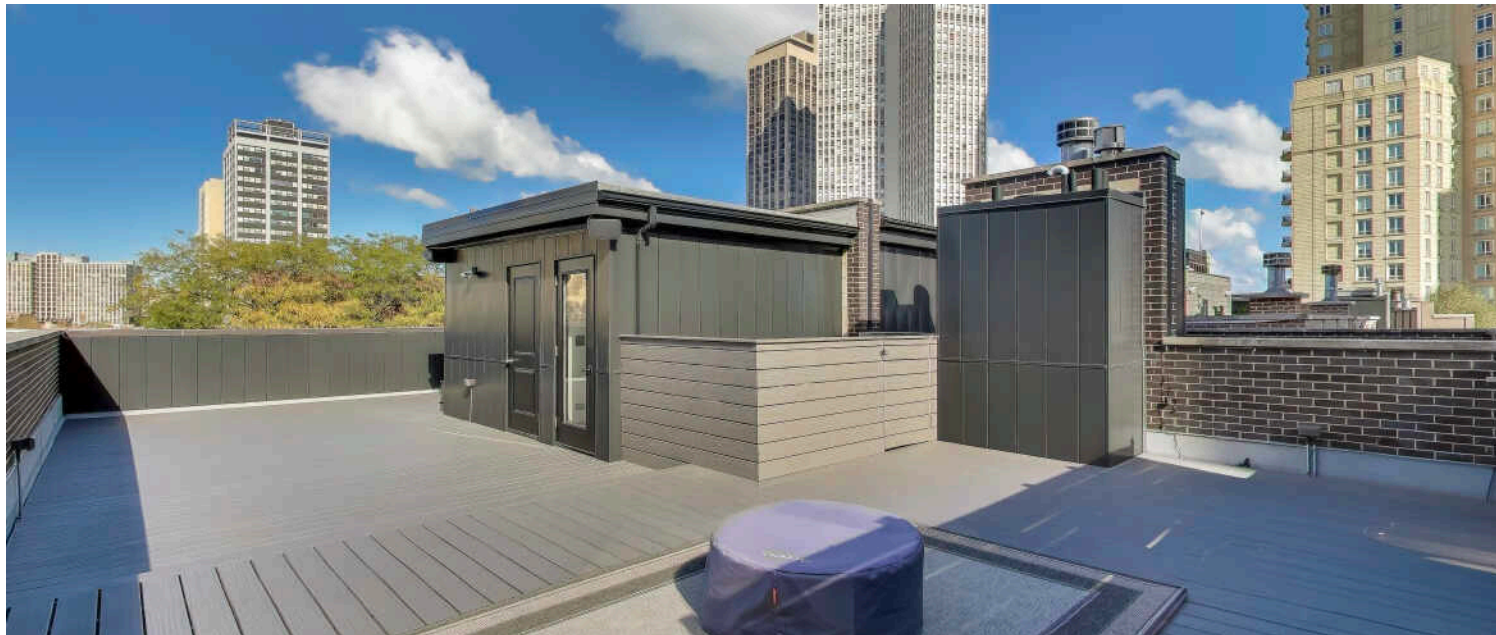
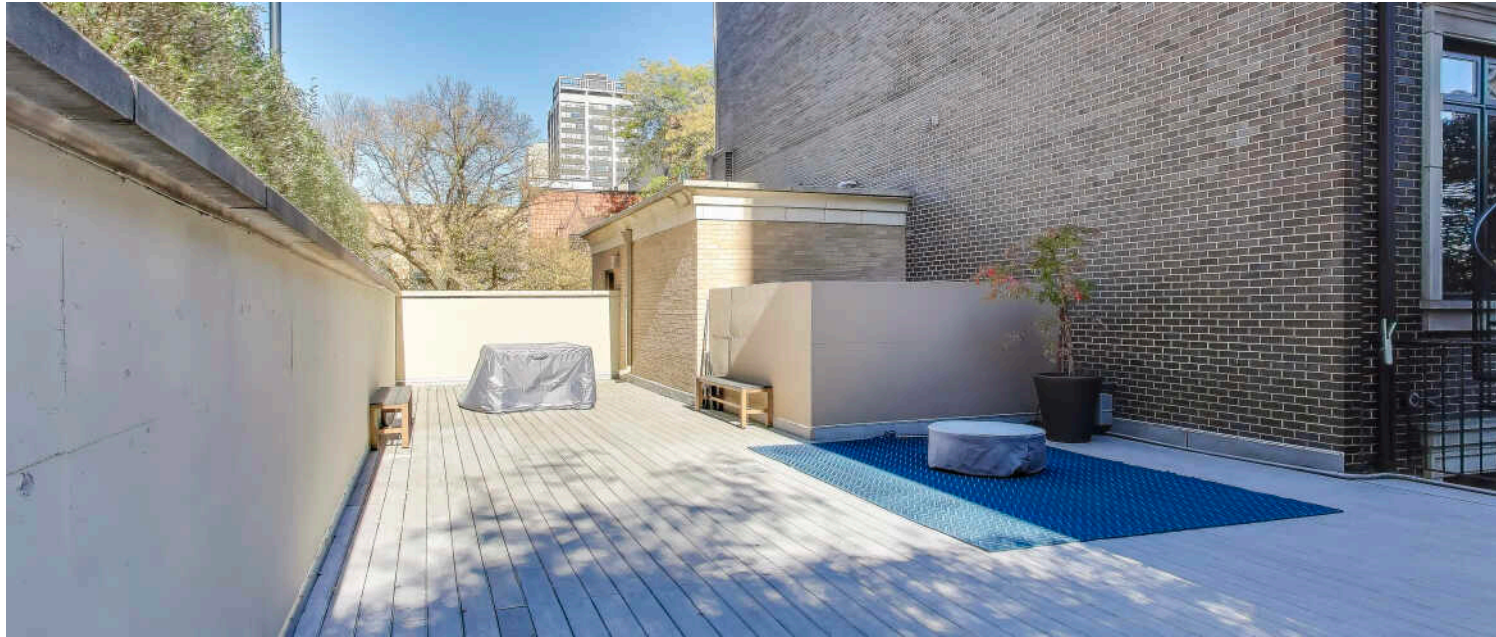




FLOOR PLAN CREATED BY CUBICASA APP. MEASUREMENTS DEEMED HIGHLY RELIABLE BUT NOT GUARANTEED.







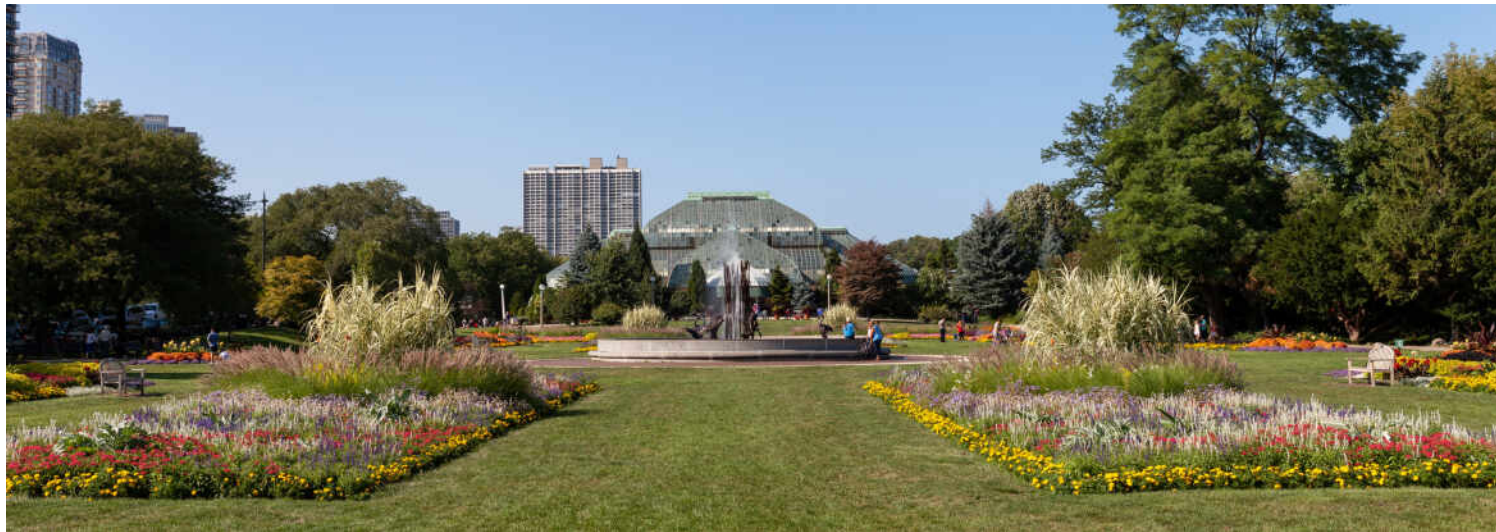


OFFICE



ELEVATOR





LINCOLN PARK RESIDENTS HAVE IT ALL – FROM THE ARTS TO ITS FAMED ZOO – RIGHT IN THEIR BACKYARD.

Locals love the many parks, shops, restaurants and tree-lined streets. The lakefront is another highlight where residents enjoy a variety of leisure activities at North Avenue Beach.

The neighborhood includes quiet tree-lined residential blocks, DePaul University, and two major museums in addition to the Lincoln Park Zoo, one of the country's oldest zoos. There's also a wide array of entertainment, eateries, and hotspots.

An evening in Lincoln Park might include seeing a play at the acclaimed Steppenwolf Theatre and dining at a Michelin-rated restaurant or a quaint neighborhood café. Sports fans will find as many dive bars with the game on as foodies will find fine-dining restaurants with al-fresco seating.

Lincoln Park is just as delightful by day. Residents are close to the lakefront and North Avenue Beach, parks, farmers markets, festivals, and countless shops, ranging from upscale boutiques on Armitage to larger retailers at the Clybourn Corridor.

Housing stock ranges from smaller townhomes and vintage condominiums to rehabs and new construction. Buyers around DePaul University can find loft condominiums in converted factories and warehouses. On its eastern edge, Lincoln Park features beautiful vintage brownstones along with high-rises with breathtaking views of the lake, park, North Pond Nature Sanctuary, and city skyline.

Located just two miles from downtown, Lincoln Park offers residents a quick commute to work. Public transportation abounds, with the CTA's Brown and Red lines serving the neighborhood in addition to several bus routes and Lake Shore Drive.





