

**4590 HIDDEN CREEK LANE**  
BRIDGMAN







4 BEDROOM  
2.1 BATH

## CHARMING STYLE MEETS EXCELLENT LOCATION

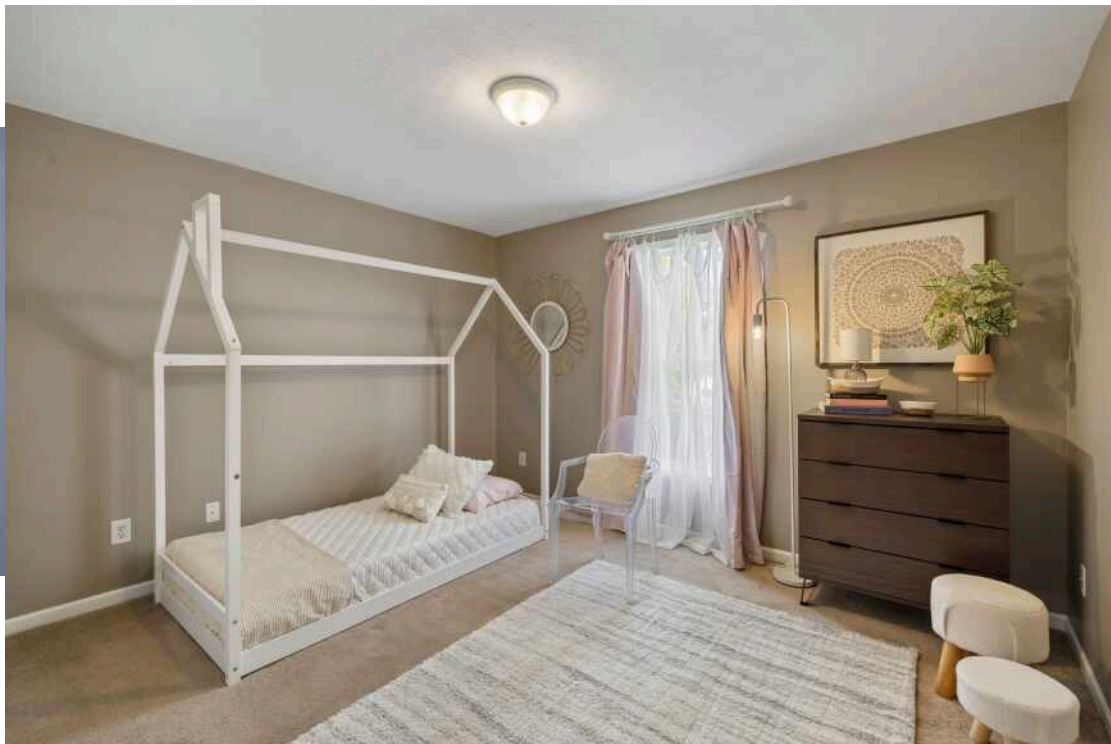
Beautiful family home in the heart of BRIDGMAN! This 3-bedroom, 2.5-bath home is nestled in a quiet, established neighborhood near the library, public pool, and charming downtown shops and restaurants. Only minutes from the pristine beaches of Weko and Warren Dunes State Park. Inside you'll find an open main floor with stainless steel appliances, new flooring and lighting, with convenient main-floor laundry. The primary suite offers a full bath and walk-in closet, while the finished lower level provides plenty of room for recreation. Including an additional bonus room and half bath. Create your dream space here with an at home gym, or office. Spread out enough for a media/theater room or ping pong recreation area. With a new egress window, and plenty of room to expand. Outside, enjoy it's charm and curb appeal with mature landscaping, a fenced backyard showcasing a graceful willow tree, and a two-car garage.

Whether you're looking for a primary residence or a second home escape, this property blends comfort, convenience, and the best of Southwest Michigan living. Book your private showing today!





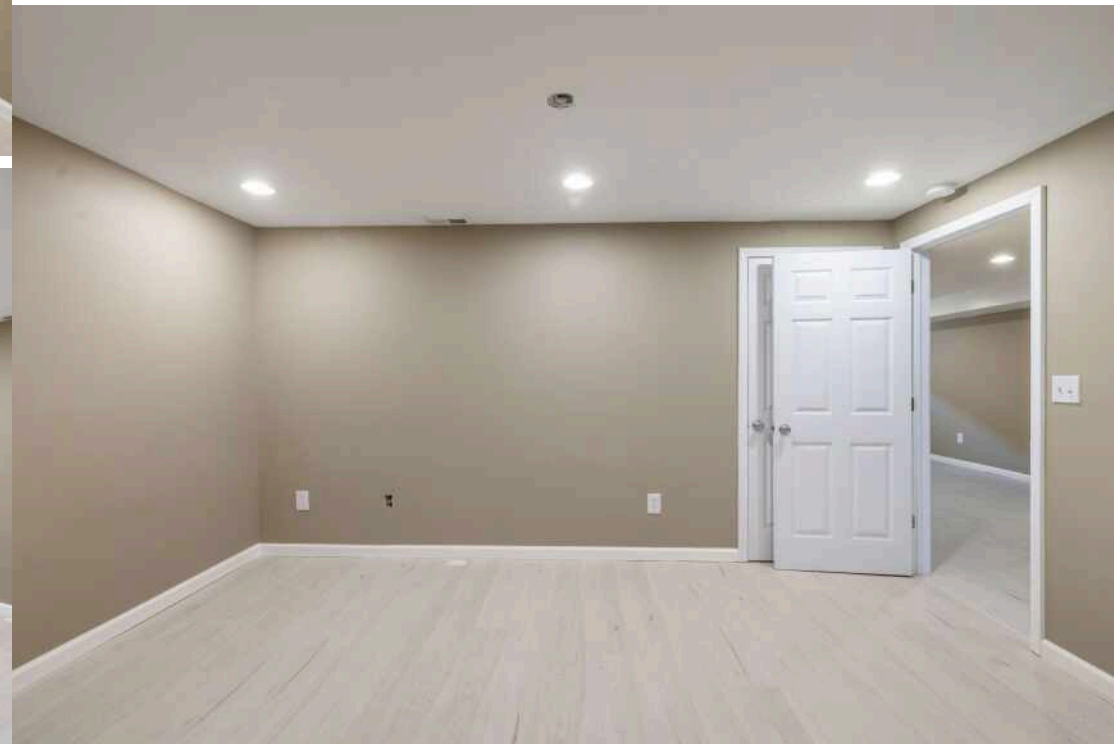
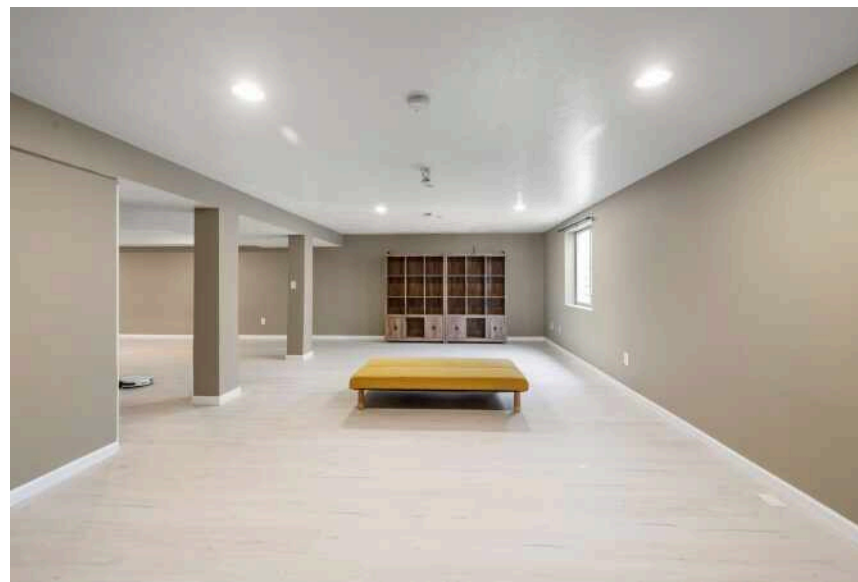
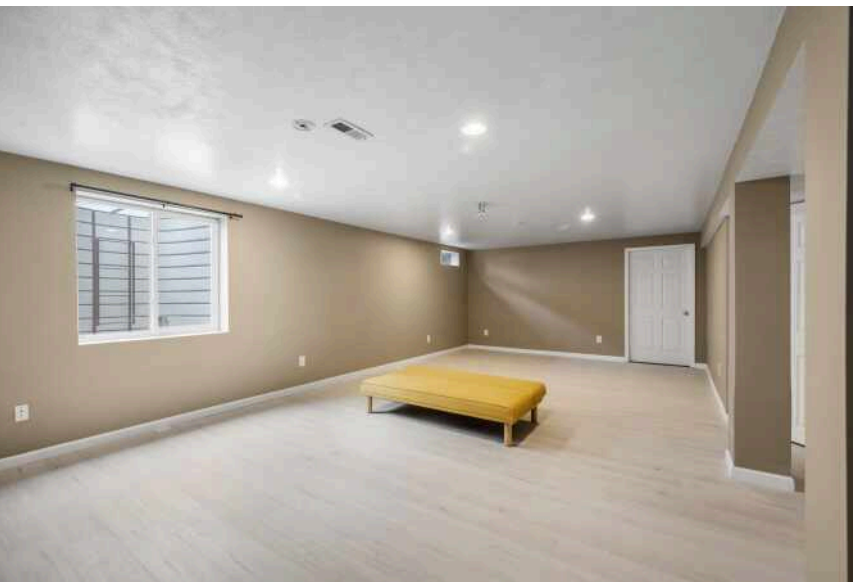
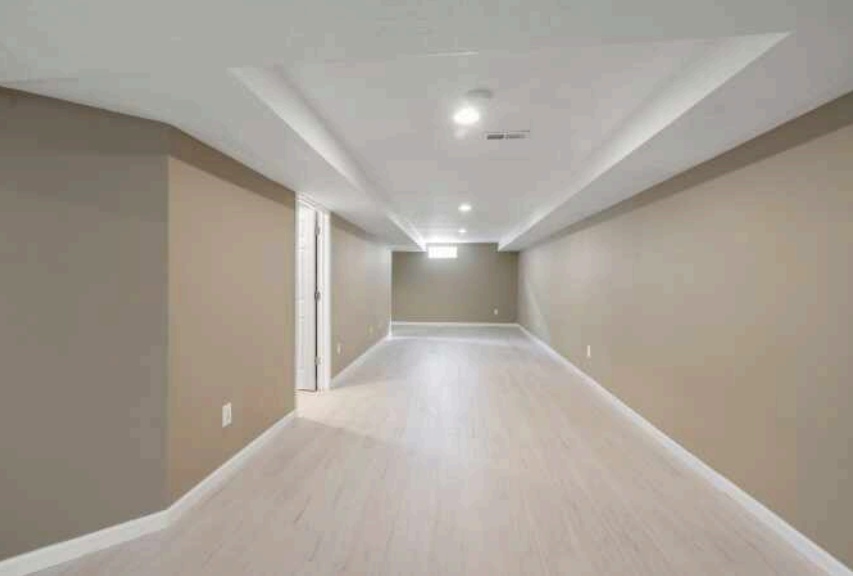




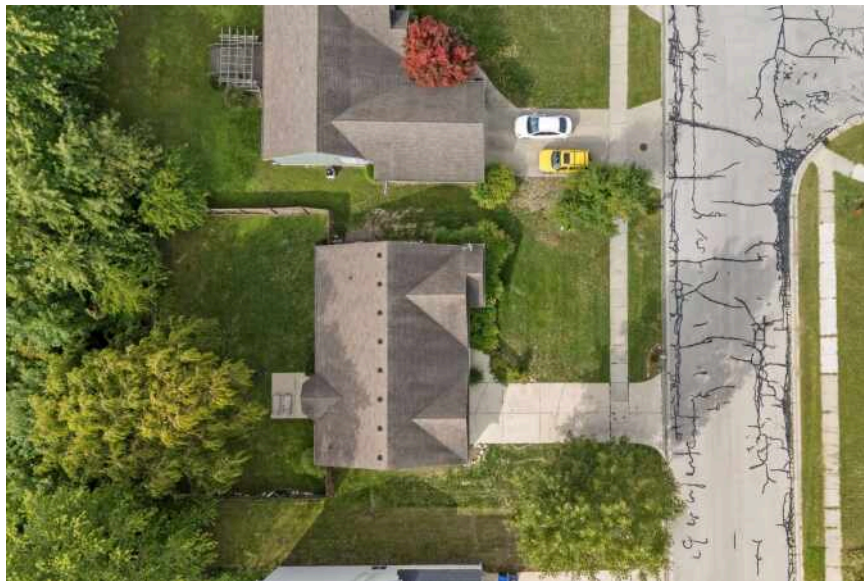




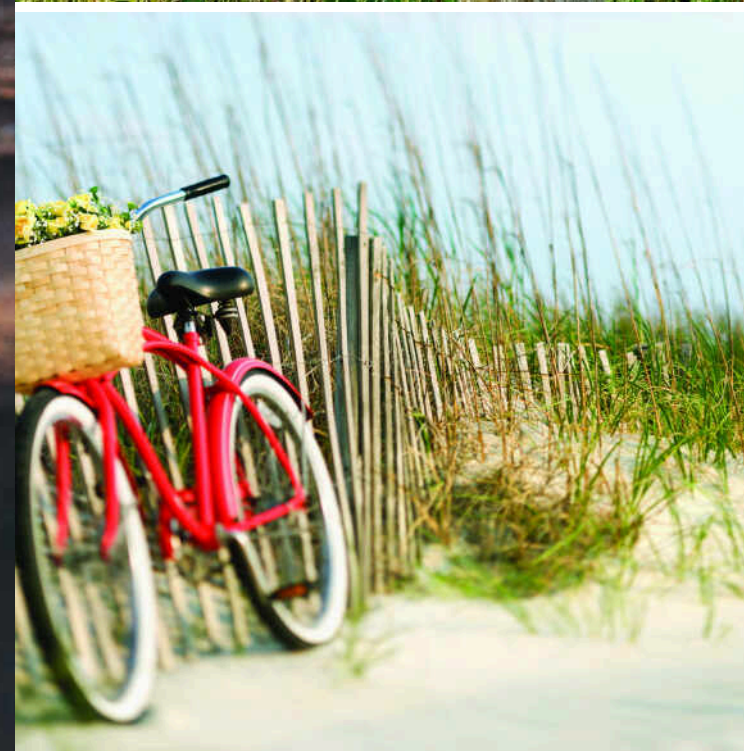












## BEACHES AND BERRIES PRACTICALLY PUT **BRIDGMAN** ON THE MAP.

In the mid-1800s, George C. Bridgman started a farm, growing berries, fruit trees, and grapes.

At the time, the market for fruit was entirely local. That changed when Bridgman granted a railroad right-of-way through his land in exchange for the establishment of a train depot. The nursery business took off when a local grower placed an ad in an East Coast farm journal and started taking orders for strawberry and cane plants. The mail-order nursery business became a million-dollar industry in the community, and wholesale nurseries continue to thrive in the area today.

The area’s Weko Beach became a destination in the 1920s with a waterfront pavilion featuring dinner, dancing, and music. The city later purchased and renovated the pavilion, now known as the Beach House.

Weko Beach continues to be a popular attraction with 960 feet of shoreline and access to the Warren Dunes State Park. There are nearly three miles of beach between Weko Beach and Warren Dunes State Park for visitors to experience.





## ELISHA TAYLOR

574-514-6759

269-231-0600

ELISHATAYLOR@ATPROPERTIES.COM

LIZ ROCH COLLECTION



All specifications, features, designs, price, assessments, taxes and materials are subject to change without notice. Depicted floor plans and architectural renderings are only an artist's impression.

