

**4606 S LAKE PARK AVENUE 101S**  
KENWOOD/HYDE PARK







#### ROOM DIMENSIONS

LIVING/DINING ROOM : 28' × 14'

KITCHEN : 10' × 9'

FAMILY ROOM : 29' × 15'

MASTER BEDROOM : 14' × 11'

SECOND BEDROOM : 11' × 9'

THIRD BEDROOM : 15' × 11'

FOURTH BEDROOM : 13' × 10'

4 BEDROOM

3 BATH

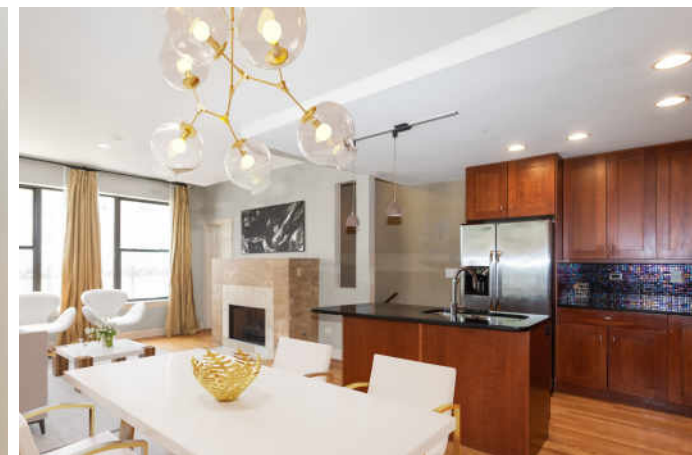
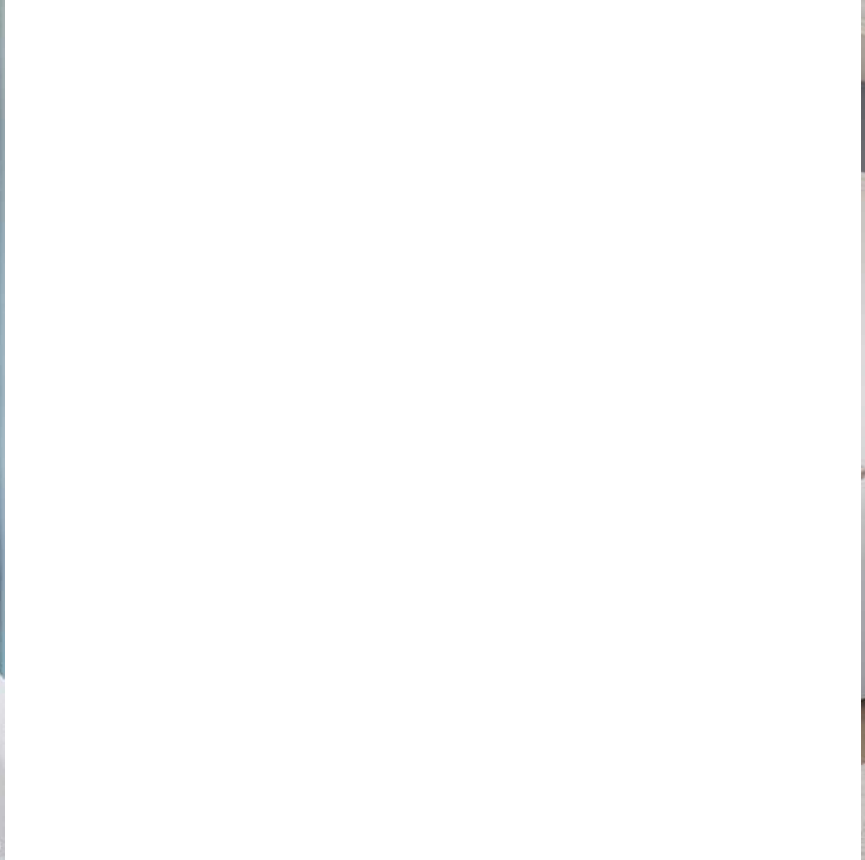
TAXES: \$3618

ASSESSMENTS: \$370

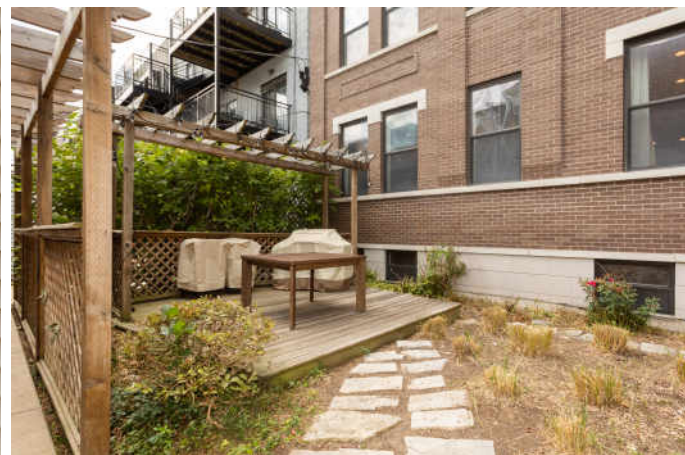
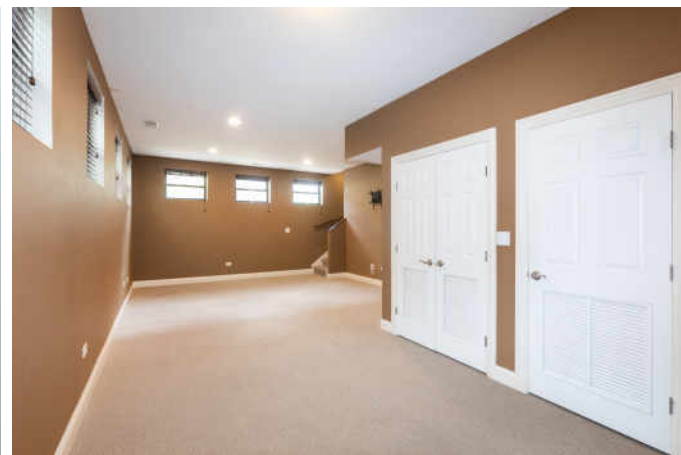
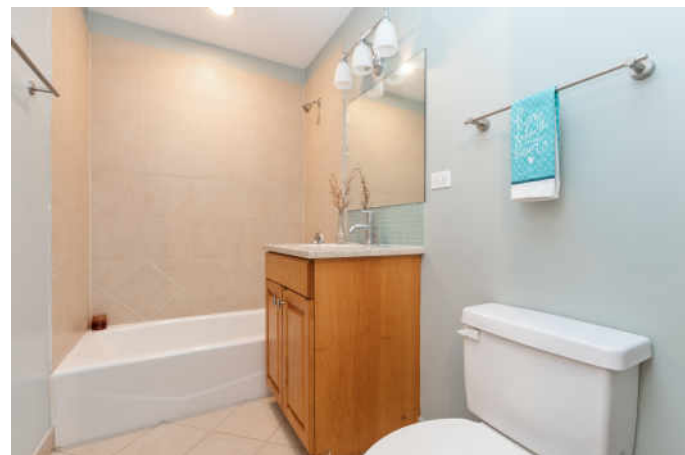
## WELCOME HOME...

Kenwood is known as one of Chicago's most architecturally significant neighborhoods. This storied lakefront community gracefully echoes its lavish beginnings with historic streets and official Landmarks, now with the added convenience of great public transportation, plenty of culture, shopping, fantastic restaurants and entertainment! Our beautiful home sits in the heart of it all and features:

- 2500 sq ft with 4 beds and 3 full baths
- Rarely available sun-drenched corner unit
- Bright & inviting open concept floor plan with living/dining/kitchen combination
- Gorgeous main living space with vivid cherry wood cabinets, hardwood floors, 10ft ceilings, large granite island, stainless steel appliances, designer glass backsplash, recessed lighting and tile surround gas fireplace
- Master Suite boasts tray ceiling & cove lighting, his/hers walk-in closets, built-in shelving, custom tile, whirlpool tub and double sinks
- Ample storage and integrated sound system throughout
- Sun-filled lower level features high ceilings, expansive family room, full bath and two additional large bedrooms
- Picturesque outdoor oasis with deck, pergola, stone walkway, grill, patio furniture & lush greenery- perfect for summer entertaining
- Rooftop deck with fantastic views
- Gated & monitored building w/ healthy HOA and low monthly assessments
- One garage parking space included











HOST TO A WHO'S WHO OF HISTORY MAKERS, WRITERS, WORLD-CLASS INSTITUTIONS AND A FORMER U.S. PRESIDENT, **HYDE PARK** HAS A STORIED PAST AS ONE OF CHICAGO'S MOST FAMOUS NEIGHBORHOODS.

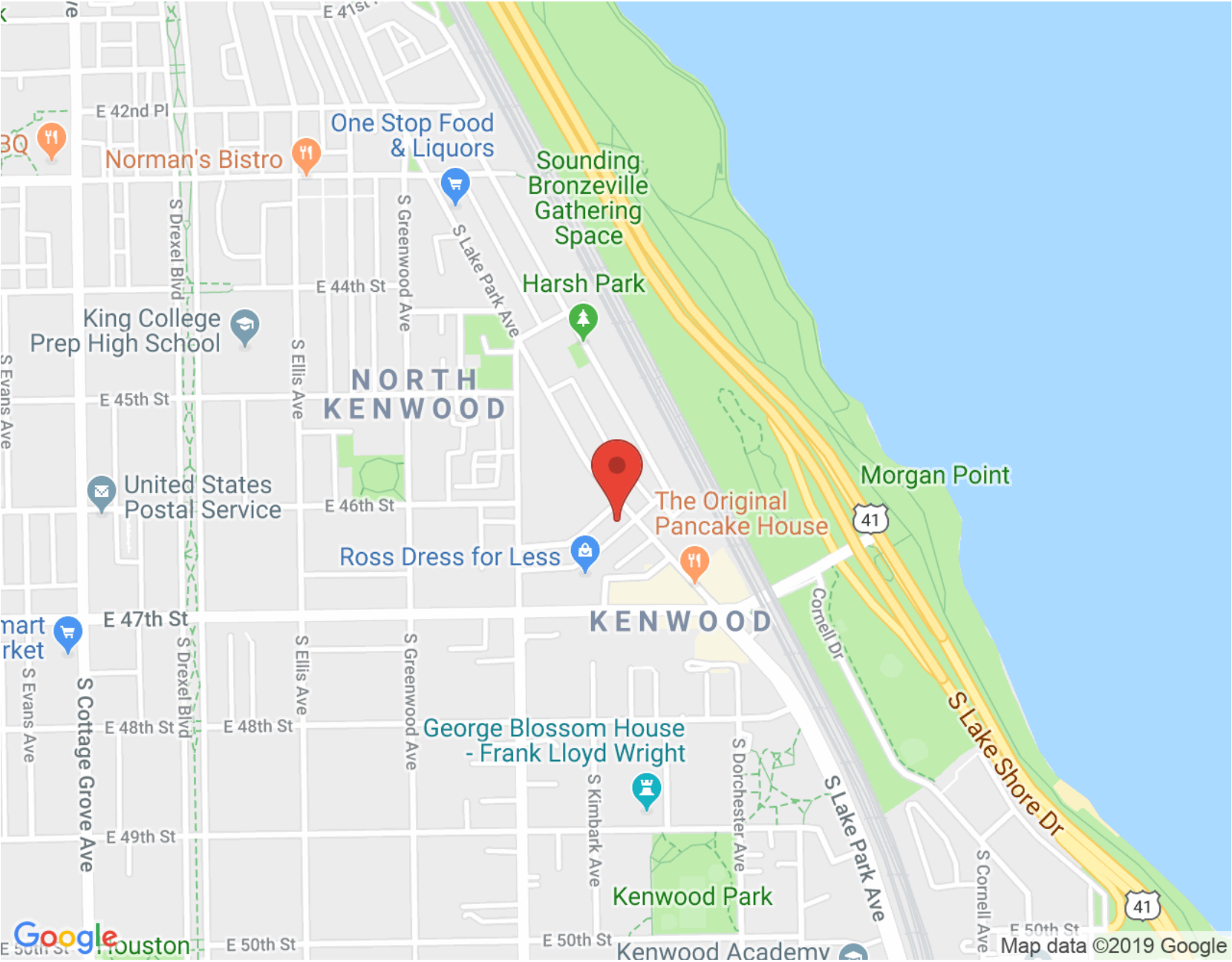
The famed lakefront neighborhood on Chicago's South Side is home to the University of Chicago, where Barack Obama was a professor before becoming the 44th President of the United States. Hyde Park is also the setting of Richard Wright's *Native Son* and former home to residents from Muhammad Ali to Saul Bellow and Clarence Darrow.

Only 10 minutes from The Loop, Hyde Park draws an eclectic mix of residents and a melting pot of cultures. Residents enjoy tree-lined streets, landmark mansions, beautiful beaches and one of the best views of the Chicago skyline.

In addition to its stately mansions, Hyde Park has a number of pre-war high-rises, modern high-rises and architecturally significant mansions. Hyde Park also has a variety of new construction condominiums, lofts, townhomes and single-family homes.

A number of cultural gems are located in Hyde Park, including The Museum of Science and Industry, the DuSable Museum of African American History and the Oriental Institute to name a few.





NOTES \_\_\_\_\_

\_\_\_\_\_

\_\_\_\_\_

\_\_\_\_\_

\_\_\_\_\_

\_\_\_\_\_

\_\_\_\_\_

\_\_\_\_\_

\_\_\_\_\_

\_\_\_\_\_

\_\_\_\_\_



## KELSEY HUPP

(312) 342-7333

773-432-0200

[KHUPP@ATPROPERTIES.COM](mailto:KHUPP@ATPROPERTIES.COM)



[4606SLAKEPARK101S.INFO](https://www.4606SLAKEPARK101S.INFO)