

461 EVERGREEN DRIVE
VERNON HILLS





ROOM DIMENSIONS

LIVING ROOM : 17' x 13'

DINING ROOM : 13' x 10'

KITCHEN : 12' x 11'

EATING AREA : 10' x 8'

FAMILY ROOM : 20' x 12'

3 SEASON ROOM : 12' x 14'

PRIMARY : 16' x 12'

BEDROOM 2 : 13' x 12'

BEDROOM 3 : 11' x 10'

REC ROOM : 25' x 13'

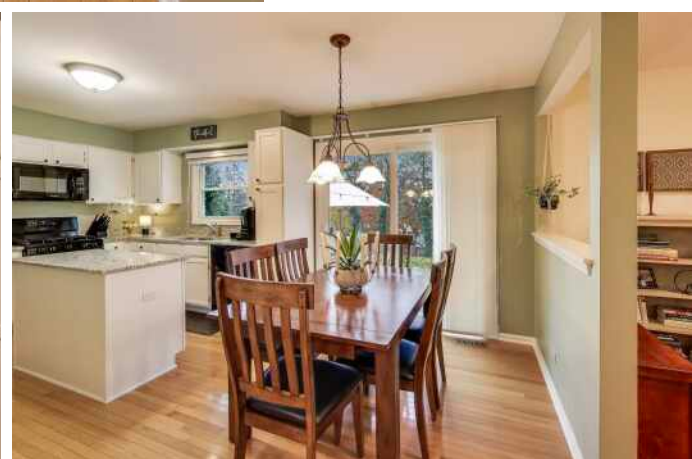
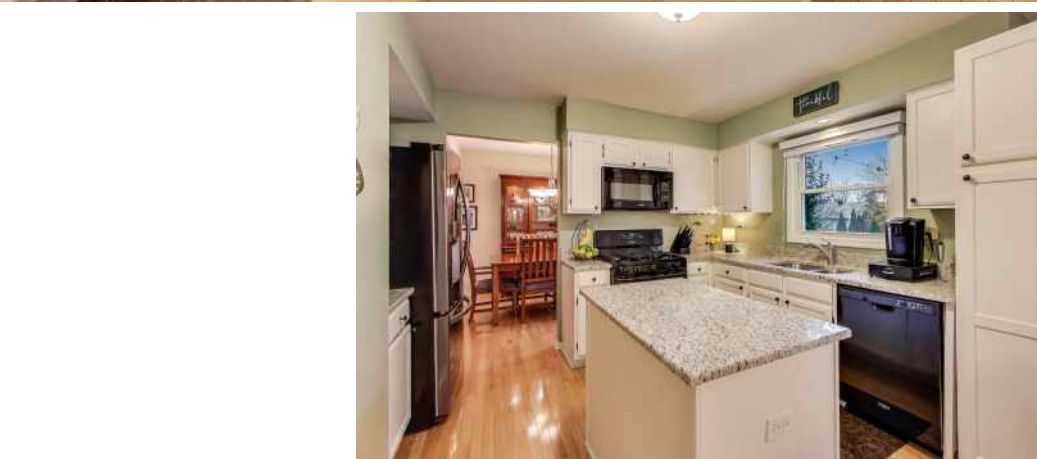
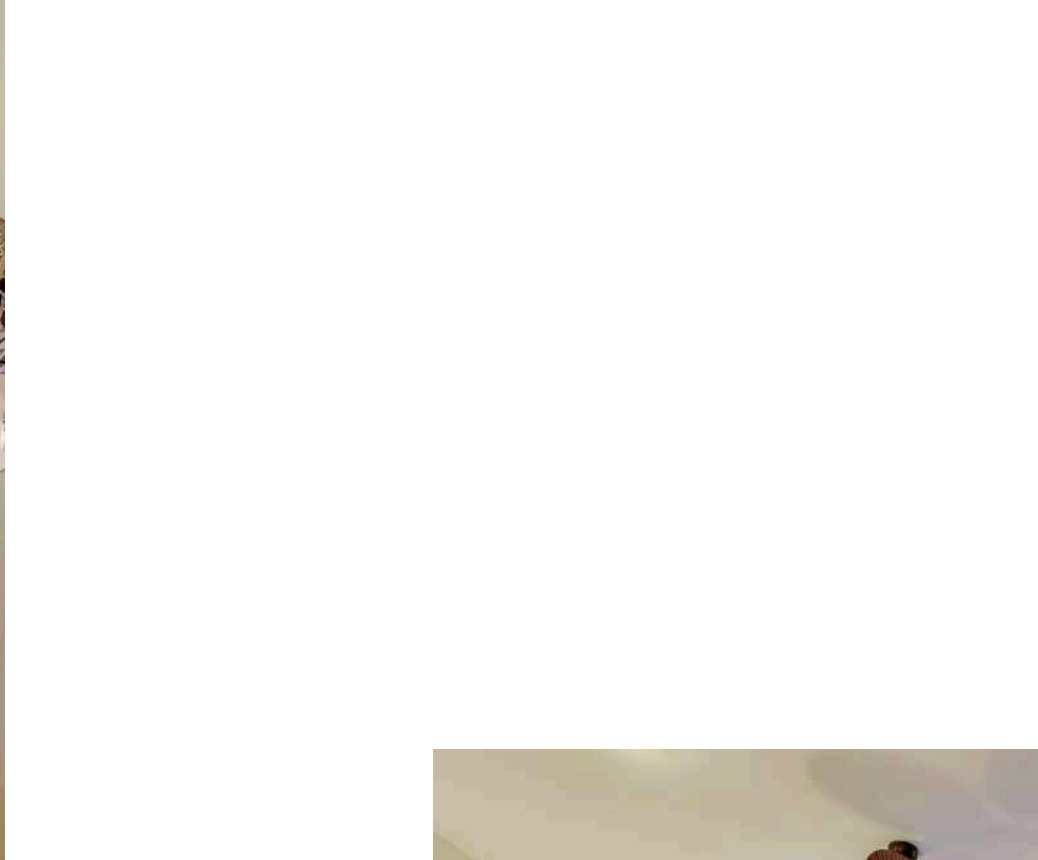
BEDROOM 4/OFFICE : 12' x 10'

3 BEDROOM

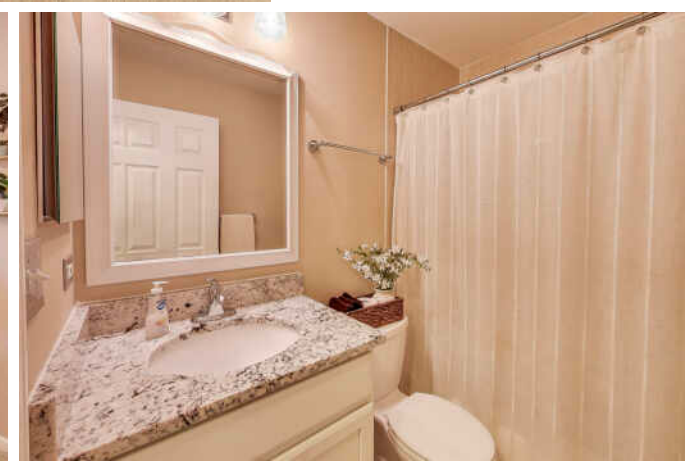
2.1 BATH

TAXES: \$12,826.54

- Charming covered porch provides the perfect welcome to this fantastic Hawthorn Club home.
- Gleaming oak hardwood floors flow throughout the main level, accented by six-panel colonist doors and newer vinyl windows with 2-inch slat blinds.
- Comfortably traditional layout features generously sized living and dining rooms.
- Refreshed white kitchen boasts rich granite counters, Samsung & LG appliances and eating area with sliders to the patio. Adjacent family room connects to a sun-filled 3 season room. Truly the heart of our home!
- Vaulted Primary Suite enjoys a walk-in closet and a dual vanity private bath with extended linen closet.
- Secondary bedrooms have lighted ceiling fans, and share an updated granite counter hall bath. Upstairs laundry room - Maytag washer and dryer remain.
- The finished basement is a valuable extension of the home's living space, offering a cozy rec room, a game nook (complete with air hockey table), and a flexible fourth bedroom/office/home gym with a walk-in closet. Tons of crawl space storage!
- UPDATES: 2022 - 3 season room carpet, LG refrigerator; 2021 - carpet stairs/2nd floor; 2020 - sump pump/backup battery, interior house painted; 2019 - vinyl windows first & second floors, kitchen slider; 2018 - air conditioner; 2017 - concrete patio; 2013 - asphalt to concrete driveway; 2009 - furnace, roof/gutters/downspouts
- Lots to do in our little community! Hawthorn Club Park is equipped with pickleball & tennis courts, ballfields, playground and walking paths that lead to the Metra station and Sullivan Woods Forest Preserve. Our neighborhood location provides easy access to the Vernon Hills public golf course, Metra, Vernon Hills and Lincolnshire shopping, dining and entertainment venues; and a direct route to the tollway.











AS FAR AS COMMUNITIES GO, **VERNON HILLS** WAS A LATE BLOOMER.

While it was settled in the 1850s, all was quiet on the development front until a residential community and golf course got things going in the 1950s, and the village quickly made up for lost time.

Situated on almost eight square miles in northwest Lake County, the village is now a busy retail hub and a mecca of shopping and dining.

Shopping is plentiful at Hawthorn Mall and numerous shopping centers stretched along Milwaukee Avenue and Townline Road. Dining options include an eclectic mix of cuisines.

Residents also enjoy Loyola University of Chicago's Cuneo Mansion and Gardens, a historic site and popular setting for year-round private events and weddings.

Vernon Hills has a wide range of housing available from new construction to homes dating back to the first neighborhood in the 1950s.

The community is accessible via the Tri-State Tollway and Vernon Hills Metra station, which provides transportation to Chicago's Union Station.





KIERON QUANE

(224) 206-8813

KQUANE@ATPROPERTIES.COM

