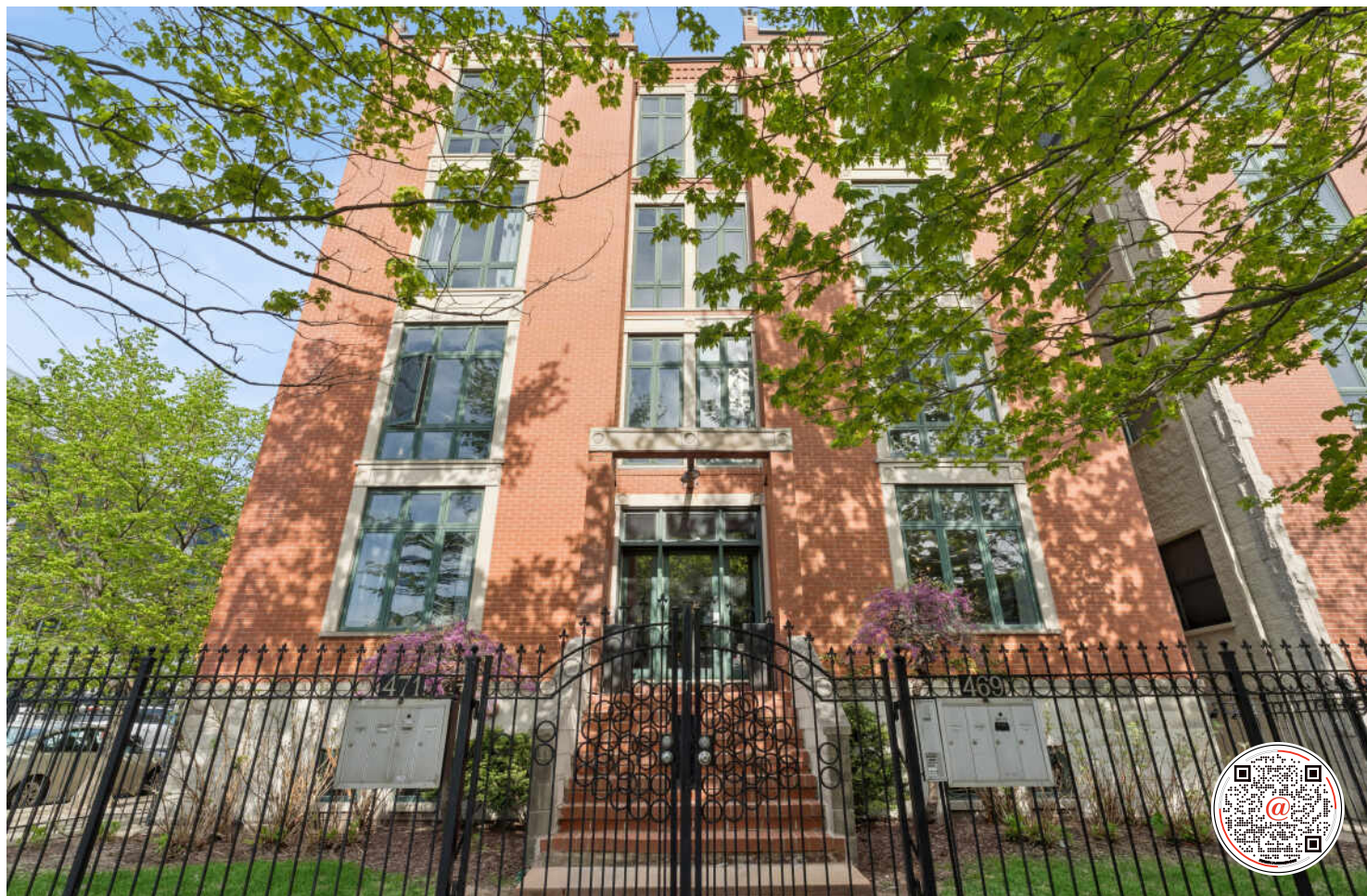


469 N GREEN STREET #1S
FULTON RIVER DISTRICT





2 BEDROOM
2 BATH
TAXES: \$9,897
ASSESSMENTS: \$310 / MONTH

Welcome to this beautifully updated, sun-drenched 2 bed/ 2 bath condo featuring timeless designer details throughout. Thoughtfully reimagined by an interior designer, the kitchen and living room blend style and function in perfect harmony. The chef's kitchen boasts stunning quartz countertops, open shelving, a massive sink, and a large custom island-ideal for entertaining. The wide, open layout flows into a dining area that easily seats 8-10, with additional room for a buffet table, making it perfect for hosting. The living room exudes sophistication with a custom gray limestone gas fireplace, floor-to-ceiling custom curtains, and a striking chandelier that adds a touch of drama and elegance. Retreat to the serene and luxurious primary suite featuring a spacious walk-in closet, a spa-like ensuite bath with dual vanities, quartz counters, dual shower heads, and a jacuzzi soaking tub. Enjoy your morning coffee or evening wine on the private balcony accessible through the sliding glass doors. Completing the home is a generously sized second bedroom, a second full bath, hardwood floors throughout, in-unit laundry, a storage room, and convenient attached garage parking. Located in a vibrant neighborhood, you're just steps from renowned restaurants, boutique shops, and all that city living has to offer. Every inch of this home reflects thoughtful design and timeless appeal.

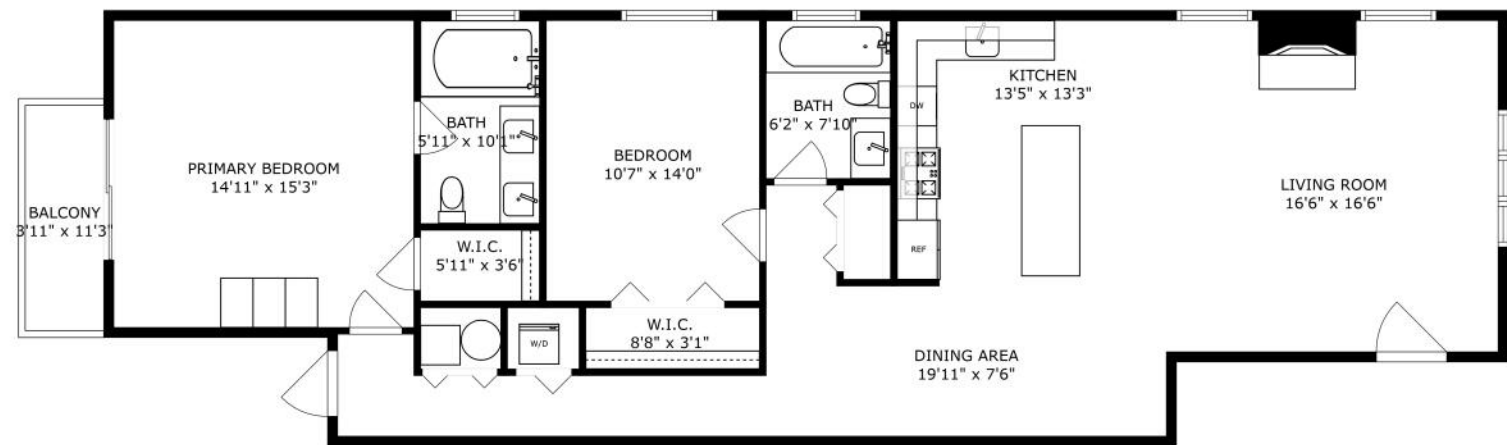




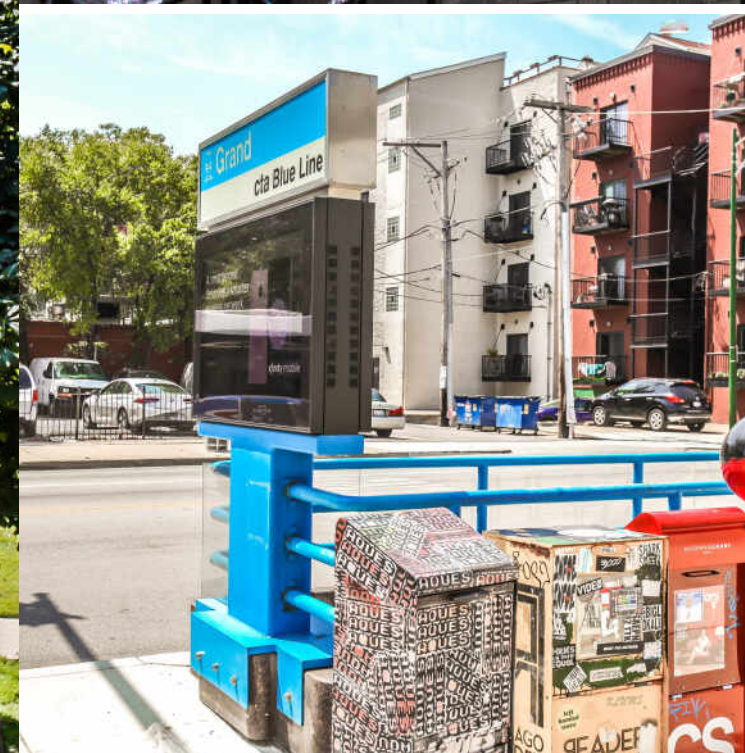


PHOTOGRAPHY BY VHT STUDIOS





SIZES AND DIMENSIONS ARE APPROXIMATE, ACTUAL MAY VARY.

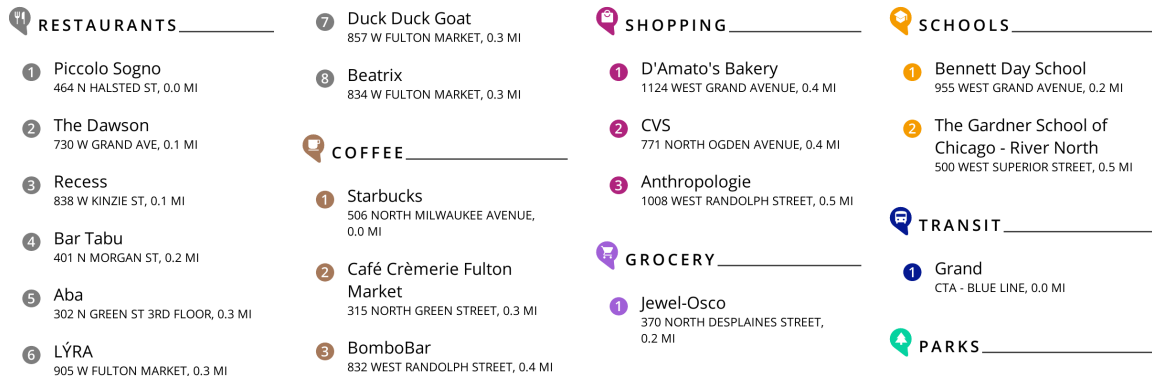


THIS DOWNTOWN POCKET SERVES AS THE LINK BETWEEN CHICAGO'S BUSTLING LOOP AND THE RAPIDLY DEVELOPING FULTON MARKET DISTRICT NEIGHBORHOOD IN THE WEST LOOP .

A sea of cyclists can be seen each morning riding down Milwaukee Avenue, sharing the road with commercial vehicles and cement trucks, illustrating this area's quickly evolving reputation from a 20th century industrial zone to one with glassy high-rises and posh restaurants and nightclubs.

Due to its industrial building stock, the Fulton River District is known for its swank loft condominiums and trendy open floor plan warehouse-to-office conversions. But there's been a flood of new construction in recent years, bringing hundreds of new upscale apartments and much needed retail to main corridors along Grand and Milwaukee avenues. One notable holdout throughout the years is the old Blommer Chocolate Factory, whose presence is evident by the thick smell of freshly processed cocoa beans.

Transit connectivity is bolstered by the Grand Blue Line station, bus routes along Milwaukee and Grand avenues, and quick access to commuter rail service at Ogilvie and Union stations. New sections of riverwalk are created in conjunction with continued development along the riverfront as per official Chicago River Corridor design guidelines and standards first adopted in 2005 and further revised in 2019.

[illegible]



JACKIE LUXEM

(847) 624-3307

JACKIELUXEM@ATPROPERTIES.COM

WWW.JACKIELUXEM.COM



FRANKIE DAPONTE

4016880383

FRANKIE@ATPROPERTIES.COM

THE
GOLD
GROUP

