

4760 FAIRFAX AVENUE
PALATINE





ROOM DIMENSIONS

LIVING ROOM : 13' × 15'

FAMILY ROOM : 24' × 19'

DINING ROOM : 13' × 18'

KITCHEN : 16' × 14'

PRIMARY BEDROOM : 16' × 21'

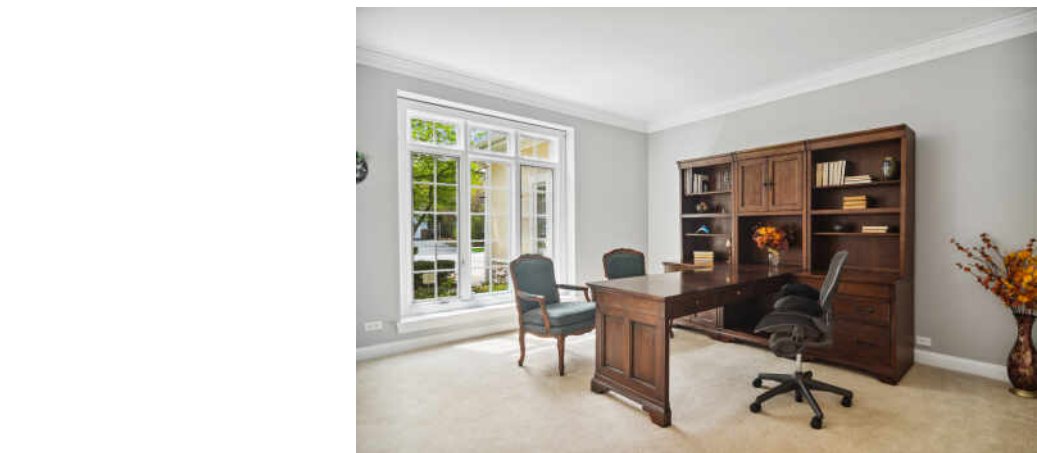
SECOND BEDROOM : 12' × 14'

THIRD BEDROOM : 11' × 13'

FOURTH BEDROOM : 14' × 14'

PROPERTY DETAILS & INFORMATION

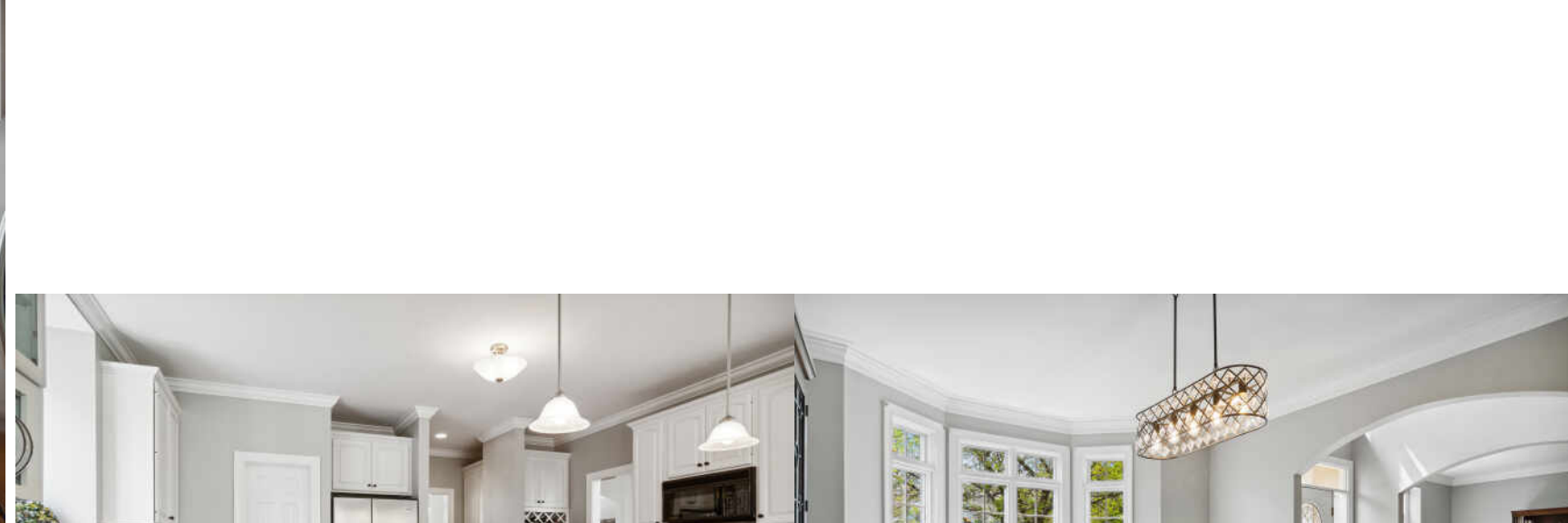
Absolutely stunning! Move right into this luxurious home in the heart of Palatine. From the moment you walk in, you'll be impressed with the soaring ceilings and the abundance of natural light, creating a bright and spacious atmosphere that's perfect for comfortable living. The large gourmet chef's kitchen is a dream for anyone who loves to cook or entertain, and the breakfast bar and sun-drenched eat-in area are the perfect places to enjoy a meal with family and friends. The butler's pantry and walk-in pantry provide ample storage space. The kitchen opens to a spacious two-story family room making it easy to stay connected with loved ones even while cooking or cleaning up. Also located on the main level is an office, living room, and separate dining room providing plenty of space for work, relaxation, and formal entertaining. The in-law arrangement on the main level is a convenient feature for guests or family members who need a separate living space. The second-floor primary bedroom with cathedral ceilings features his and her walk-in closets, and a luxurious en-suite bathroom providing homeowners with a true retreat. Three other large bedrooms are located on the second floor with tons of closet space. A unique and impressive bonus room is also tucked away between two of the bedrooms. The possibilities are endless as it could be used for a massive walk-in closet, playroom, and so much more. The laundry is conveniently located on the second floor. The full finished English basement with its recreation room, game room, exercise room, and bedroom with a walk-in closet offers plenty of additional space for relaxation and entertainment. There is also an additional full bath in the finished basement. The outdoor space with professional landscaping, brand new roof, large deck, paver patio, and fire pit is the perfect setting for summer barbecues and gatherings with family and friends. Don't miss out on this opportunity to live in luxury! Enjoy living close to schools, parks, easy access to expressways and feed into Fremd HS!

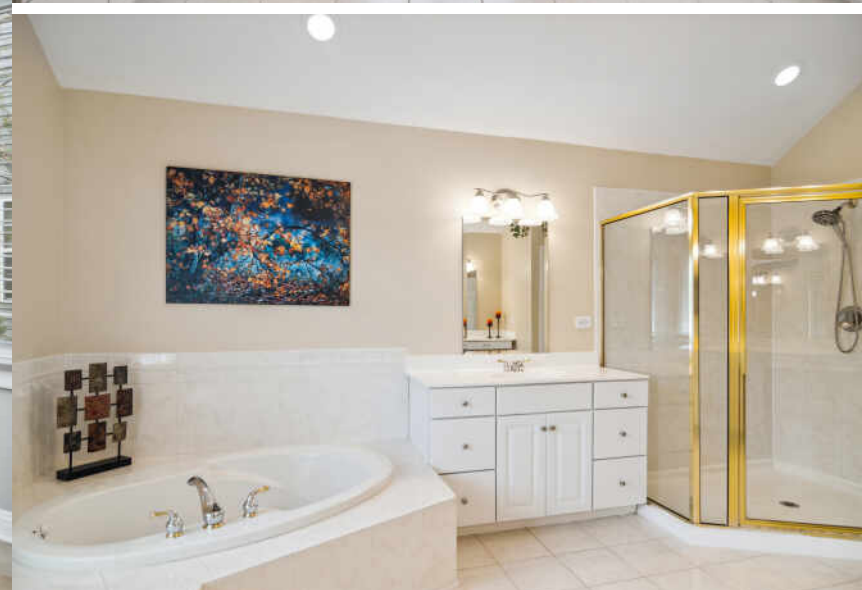


6 BEDROOM

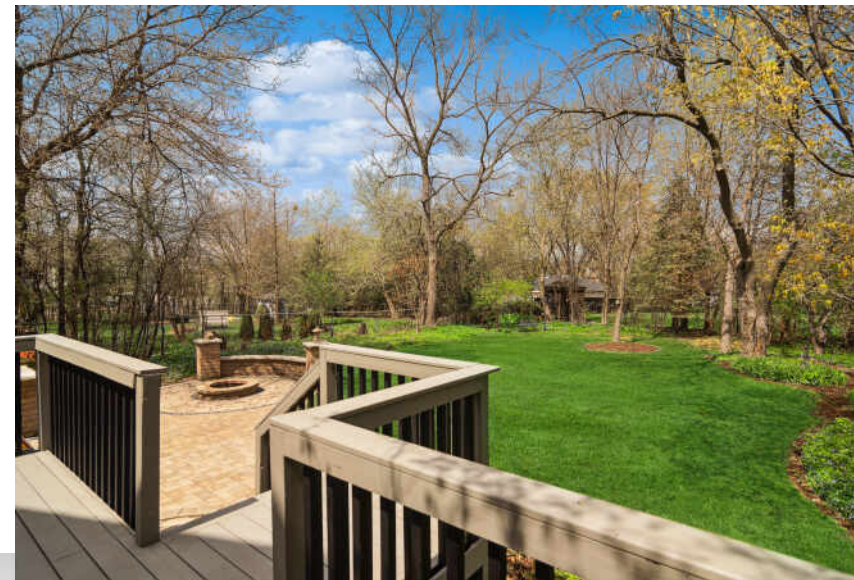
4.1 BATH

TAXES: \$17,361











THE VILLAGE OF **PALATINE** HAS MASTERED THE ART OF BALANCE.

The growing community has a healthy mix of residents who enjoy its friendly suburban lifestyle and businesses that fuel the local economy.

The village embraces growth to support a wealth of amenities and services. The Palatine Park District has 28 parks, an 18-hole golf course, and a variety of classes from fitness and sports to arts and crafts. Palatine offers scenic views with winding trails, beautiful residential areas, and nearby Deer Grove Forest Preserve.

Palatine’s downtown business district is both charming and self-sufficient for residents. Restaurants include a mix of local favorites from classic eateries to upscale breweries, as well as a variety of local bars. The village hosts several street festivals and a popular farmers market.

Commuters have access to the Chicago Loop with the Palatine Metra station and I-90. The nearby Chicago Executive Airport offers private and corporate aircraft services.



NOTES _____



LAURA CARTWRIGHT

847.894.5189

8477970200

LCARTWRIGHT@ATPROPERTIES.COM



CARTWRIGHTHOMETEAM



CHRISTIE'S
INTERNATIONAL REAL ESTATE

4760FAIRFAX.INFO

All specifications, features, designs, price, assessments, taxes and materials are subject to change without notice. Depicted floor plans and architectural renderings are only an artist's impression.

